

BIKING

Franklin's rural roads have great scenic views—especially Canal Rd. & its intersecting roads. Also, paved bike paths & lanes are marked on the map.

Off-road unpaved trails:
Six Mile Run Reservoir Site has two off-road trails (yellow and blue trails) totaling about 5 miles @H4 has numerous off-road trails totaling about 13 miles @I5-7, J7

D&R Canal is open to bikes the entire length.

Flemer Preserve's path is gravel the entire length and open to bikes. @P2

BIRDING

Franklin has spectacular array of bird life viewable along all hiking paths. Two of the better locations are:

Negri-Nepote Native Grassland Preserve @I7

Griggstown Native Grassland Preserve @K2

BOATING

Electric, row and inflatable boats, canoes and kayaks are all permitted in the D&R Canal.

Boat launch:

Colonial Park BL-3 @F4
Old DeMott Lane BL-4 @D8
East Millstone Park BL-5 @F4
Griggstown Causeway BL-6@K2

CAMPING-No overnight camping is available to the general public.

EQUESTRIAN

Six Mile Run Reservoir Site's Blue trail is approximately 3 miles. @H4

Colonial Park Bridle trail begins just east of the paddleboat pond. @E5

The entire length of the **D&R Canal towpath**.

The Ten Mile Run Greenway Equestrian trail @K2

FISHING

D&R Canal & Millstone River have many access points for freshwater fishing.

Colonial Park has three stocked ponds. @F5

GARDENS

Colonial Park 732 873-2459
3 different garden areas

- **Rudolf W. van der Goot Rose Garden G-1A @F4**
- **Fragrance & Sensory Garden G-1B @F4**
- **Perennial Garden G-2 @E4**

Ten Mile Run Butterfly Garden G-3 @K2

Blackwells Mills Canal House Perennial Garden G-4 @H4

GOLFING

Regulation 18 & 9-hole golf:

Quail Brook Golf Course
625 New Brunswick Rd.
(732) 560-9199
6,617-yard County course is heavily wooded with rolling front 9 & tight, hilly back 9. Golf shop, driving range and snack bar @F7

Spooky Brook Golf Course

Elizabeth Ave. (732) 873-2242
6,612-yard County course with spacious greens & fairways & a senior's favorite Golf shop, driving range & snack bar. @F5

Driving ranges:

Quail Brook @F7, see above.
Spooky Brook @F5, see above.

Miniature golf:

Colonial Park putting course
732-873-8585
18-hole putting course unlike traditional resort -type miniature golf & offers gardens and natural areas. Open Apr. - Oct. @F5

HUNTING

State-land

609-924-5705

The 3,000 acre Six Mile Run Reservoir Site has numerous Bow hunting areas.

Township-open space

732-873-2500
700 acres open to hunting white-tailed deer by permit only issued in Sept.

For more information please visit www.franklintwpnj.org/hunting

Photo Credits

- * Bunker Hill Natural Area – Merrield
- * Butler Road Natural Area- Schnee
- * Colonial Park Lake- Collier
- * D&R Canal Canoe- Savoia
- * Franklin Park Natural Area- Wisneski
- * Negri-Nepote Native Grassland Preserve- Singh
- * Six Mile Run Trail- Bianco
- * Griggstown Native Grassland Preserve—Siegal
- * D&R Canal Towpath- Entchev
- * Others— Hegedus

PARKS

Township Parks:

East Millstone Park @F4
Nassau Park @C6
Dunham Lebed Park @E8
Rutgers Heights Park @E8
Castleton Park @F9
Middlebush Park @F7
Inman Park @G8
Naaman Williams Park @G9
Consovoy Park @F10
Hawthorne Park @F10
Bascom Park @G8
Kingston School Park @P2

County Parks:

Colonial Park @F4
Qualibrook @E8

For more information on the Parks in Franklin Township please visit www.franklintwpnj.org/ThingsToDo

State Parks:

Delaware and Raritan Canal Commission
<http://www.dandreamal.com>
D&R Canal State Park
Six Mile Run Reservoir Site

Local Societies

The Meadows Foundation

1289 Easton Avenue
Somerset, New Jersey 08873
(732) 828-7418
Local non-profit organization that oversees seven historic properties they keep open to the public.

Griggstown Historical Society

c/o 506 County Road 601
Belle Mead, NJ 08502

East Millstone Historical Society

<https://www.facebook.com/EastMillstone/>

Kingston Historical Society

<http://www.khsnj.org/>
PO Box 323
Kingston, NJ 08528
Office: Delaware and Raritan Canal Lock Tenders House, Kingston

Rockingham Association

PO Box 496,
Kingston, NJ 08528
(609) 683-7132
The Rockingham Association was incorporated in 1964 as the NJ State-recognized, non-profit auxiliary organization to Rockingham State Historic Site.

HERITAGE

The Delaware and Raritan Canal and its locks. In 1973 the canal and its remaining structures were placed on the National Register of Historic Places making these 20 miles along the Township's borders a great place to visit.

Griggstown

The wooden canal bridge Muletender's Barracks H-2B @K2 Bridge Tender's House and Station H-2A@K2
The Griggstown Lock H-16 @L2
All above are situated at this historic section of the canal.
Visit <http://www.millstonevalley.org> for more information

Blackwells Mills

The Bridge Tender's House and Station The wooden bridge and mill site are reminders of the area's active past. Blackwells Mills Canal House built circa 1835, was built for those operating swing-bridges along the Canal. The house has many programs, craft and antique shows, house tours, art exhibits & plant sales. H-1B @H4 Visit <http://bmcha.uscbly.com> for more information

The Ten Mile lock H-17 @C5

Rockingham Museum was George Washington's headquarters in 1783. H-3 @O2 Visit <http://rockingham.net/> for more information on the guided tours.

The Franklin Inn Originally a Dutch farmhouse built in the late 18th century, a 1734 addition turned it into a tavern. British General Cornwallis encamped here during the Revolution. H-4A @F4

East Millstone Canal House

H-4B @F4

Weston Canal House H-18 @D4

These historic houses are in need of major renovation.

Tulipwood 1165 Hamilton St.

The only known Dutch, shingle-style architecture in central NJ designed by well-known architect J. August Lienau in the late 1890's. H-5 @G8

For more information visit <https://visitsomersetnj.org/fun-somerset-nj/tulipwood>



Van Wickle House

1289 Easton Ave. (732) 828-7418
Built in 1722, facing the Raritan River & is an excellent example of early 18th C. Dutch architecture unique to the NJ-NY area. Restoration includes formal gardens, Canal Bridge, wetland boardwalk & nature trail. H-6 @E8

Hageman Farm

209 South Middlebush Rd.
(732) 828-7418
The rear portion of the house was built in 1702, a Victorian addition was added in 1868 & a dairy barn was built in 1876. H-7 @C6
Van Liew-Suydam House
280 South Middlebush Rd.
(732) 828-7418
A Dutch-framed barn, older outbuildings & the 1875 house that includes ornate woodwork on the porch & walls. This is a great example of 19th C. Victorian farm-house architecture. H-9 @H6

Wyckoff-Garretson House

215 South Middlebush Rd.
(732) 828-7418
Built around 1705, part of the house may be the oldest standing township building. H-8 @H6

For more information and events on the above Meadows Foundation houses visit <http://www.themeadowsfoundation.org>

Pleasant Plains Schoolhouse

Part of this dates from the early 19th Century and part from the mid to later part of that century. H-10

The Hutcheson Memorial Forest

Though forests are not normally listed as historic sites, this is because it has one of the last uncut forests in the Mid-Atlantic States and appears on the National Park Service Register of Natural Landmarks. Access only by tours given on Sundays. H-11 @F5 <http://hmf.rutgers.edu>

Voorhees House-Stagehouse

Restaurant 1783 building is the oldest house in Middlebush. H-12 @G7

Ukrainian Cultural Center and Orthodox Museum

135 Davidson Ave.
908-469-1018
Museum displays decorative Easter eggs, lacework, hand embroidery, statuary, church vessels & other Ukrainian cultural & historical treasures. Hours by appointment only. H-15 @C7

The Hendrick Fisher Homestead

is believed to be the oldest historic structure in Somerset County. The 1688 structure remains, although subsequent additions and alteration have changed the house from the original farmer's house. H-15 @C7

For more information visit <https://www.uocofusa.org/>

Guglielmo Marconi Plaza

Once known as the New Brunswick Marconi Station, President Woodrow Wilson's Fourteen Points speech was transmitted from the site in 1918. @E9

TRAILS

The following are trails in the northern portion of the Township.

Colonial Park 651-acre county park with 1.4-mile par- course, paved bike path & several miles of nature paths. @F5

D&R Canal State Park Linear park bordering D&R Canal has 20-mile towpath in Franklin. Open to walkers, bikers & equestrians. Side trails leave the towpath in Griggstown at Little Valley & at the Griggstown lock.

Frieda Marden Preserve @F10 has a trail leading to the canal bank @F8

Inman Park 51-acre Township park @F8

Negri-Nepote Native Grassland Preserve 163-acre preserve has 110-acres of grassland, a forest, scrubland & a 2-acre wetland attracting migratory birds & amphibians. Over 3 -miles of pedestrian trails, bird boxes & interpretive signage. @I7

Six Mile Run Reservoir Site The 3,000-acre site has over 6-miles of 'official' trail which begin at the old Park Headquarters on Canal Rd. There also are many miles of unofficial trails located at various sites around the park— including trails running between Rt. 27 and S. Middlebush Rd., beginning at the rear of the parking area of the Jersey Knights' soccer field on Rt.27. @H4

Van Wickle House's short trail loop through trees, across a boardwalk, through a marsh & along the edge of canal. H- 6 @E8

The following are trails in the southern portion of the Township.

D&R Canal State Park

This linear park that borders the D&R Canal has a well-maintained towpath that is over 20 miles long in Franklin. This multi-use trail is open to walkers, bikers & equestrians. At junctures, side trails leave the canal towpath. One is Griggstown at Little Valley and the other is at the Griggstown lock.

Ten Mile Run Greenway

684-acre greenway is over 4 miles in length from Canal Rd in Griggstown to South Middlebush Rd in Franklin Park. The four sections are:

Griggstown Native Grassland

Preserve Driveway and parking lot access off of Canal Rd. This section has over 100 acres of grasslands and hundreds of acres of forest. There is over 6 miles of trails, some through forest and some along field edges. @K2

Bunker Hill Natural Area

Parking is on the north side of Bunker Hill Rd. This section has trails through a very mature forest and along edges of meadows. One forest trail crosses the Ten Mile Run stream and has spectacular view of a 30 foot high vertical cliff towering above the stream. Trails connect to Catalpa Farm area to the east and Griggstown Preserve to the west. @L4

Franklin Park Natural Area

Parking is available along Old Vliet Rd to access the trails along field edges and through a small forest. It connects to Bunker Hill Natural Area in the west. @K5

Bunker Hill Environmental

Education Center This 95 acre center has a one mile trail with driveway access on Bunker Hill Rd. A trail connects these trails to the trail system on the Ten Mile Run Greenway. @K3

Spieden & Hoebel Farms & Little Valley

Natural Area -120- acres
The trails in this area, located off of Canal Rd in Griggstown, run through a forest and along field edges. **Please respect the buildings and the stables as they are private areas and are not open to the public except by permission.** There is no public parking at Little Valley Stables. Also, located just on the other side of Canal Rd. is a trail that crosses the Canal and then runs through the Millstone River floodplain- a nice short walk to the river in dry weather. Parking is in a small lot on the western side of Canal Rd. @M1

Flemer Preserve A 7.4-acre preserve adjacent to D&R Canal in Kingston. A 2 mile trail loop runs along the east bank of the Canal returning to the parking lot on the southbound side of Rt27 using the Canal towpath trail. There is a pond on the north side of the trail. @F10



Colonial Park



Bridgetenders House- D & R Canal Griggstown



Colonial Park



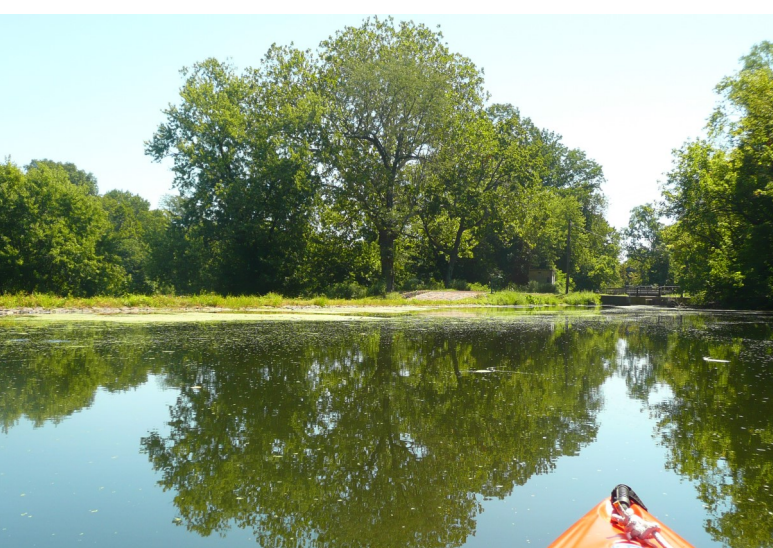
Blackwells Mills Garden



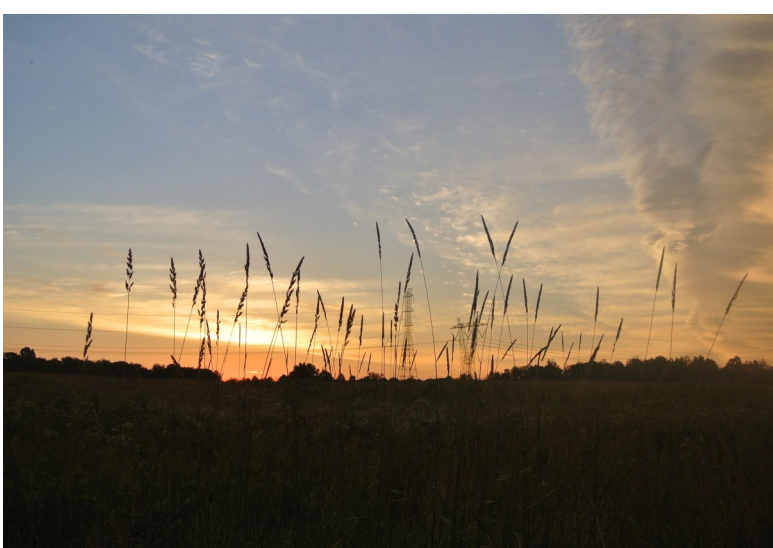
Bunker Hill and Franklin Park Natural Area
2014, Trails Photo Contest-Collier



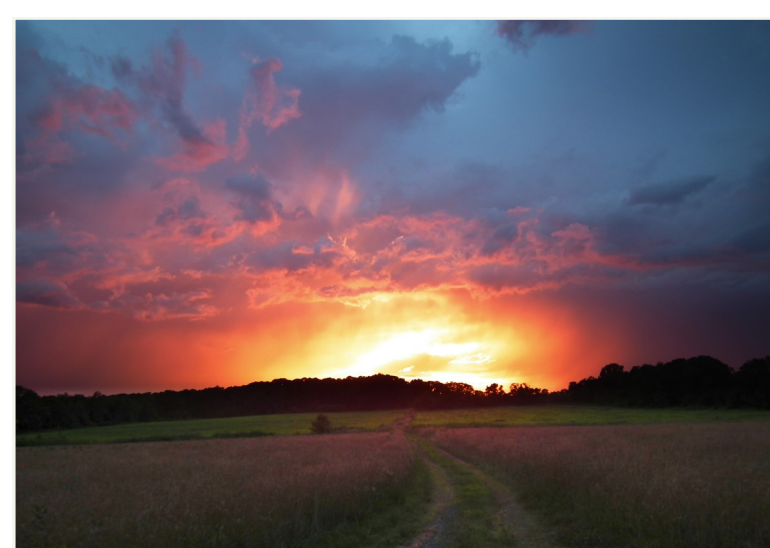
Negri-Nepote Native Grassland Preserve
2014, Trails Photo Contest-Patel



D & R Canal State Park-
2012 Trails Photo Contest- Kostic



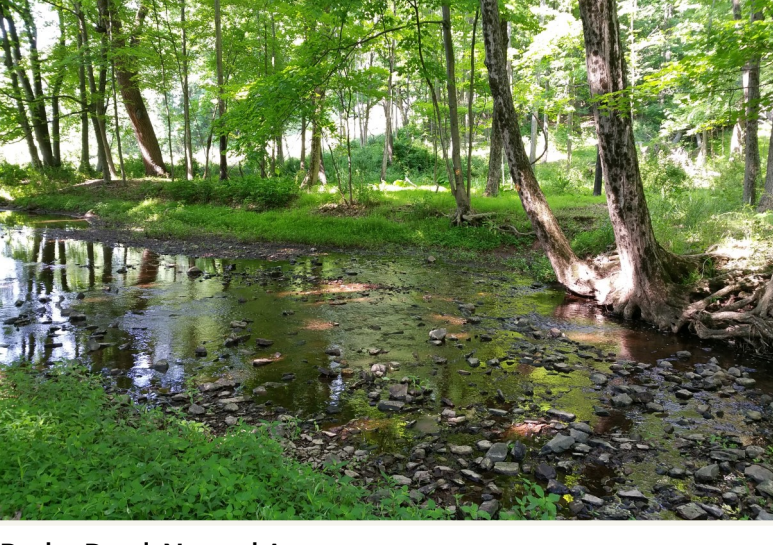
2017 First Place Winner for the Kids Trails Photo Contest
Negri-Nepote Native Grassland Preserve-Grace



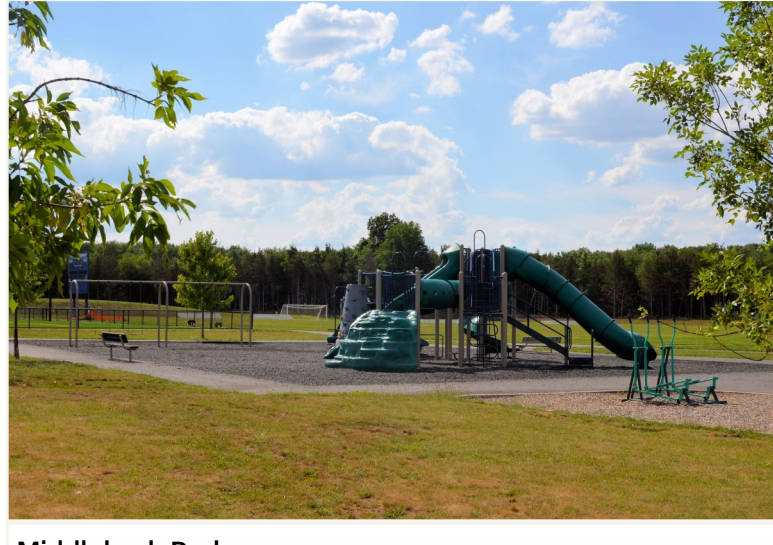
Middlebush Park
2015 Trails Photo Contest-Slobodzin



Colonial Park
2014, Trails Photo Contest- Siegal



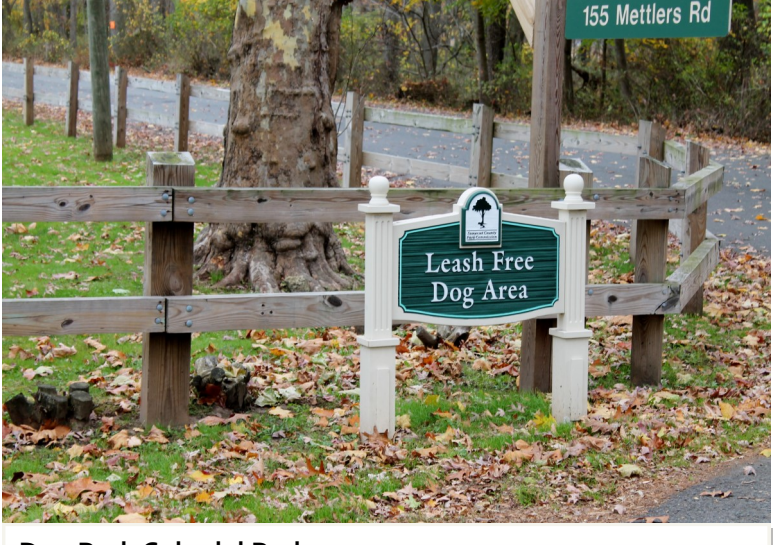
Butler Road Natural Area
2015 Trails Photo Contest Winner-Riley



Middlebush Park
2016 Trails Photo Contest-Bassim



2017 Overall Winner for the Adult Trails Photo Contest
Griggstown Native Grassland Preserve- Caasi



Dog Park Colonial Park



Mayor, Phillip Kramer- 2017

Franklin Township has it all! It is an outdoor year round enthusiasts dream located conveniently in Central NJ.

The "Things To Do" map showcases Franklin's extensive ways to recreate, visit historic sites and buy local farm products or just kick back.

A great place to relax! Franklin offers plenty of room to explore. The Township has over 9,000 acres of beautiful well maintained open space preserves, 60 miles of trails, historic sites, parks and farms to visit.

A multitude of cultural and recreational opportunities provide year-round excitement; in particular, residents and visitors can choose among a dozen neighborhood municipal parks, walk miles of open trails, or take part in outdoor sports like kayaking, canoeing, fishing, camping, and horseback riding. With so much activity to offer, a great standard of living and a pro-business municipal government, it's no wonder that Money Magazine (2008) voted Franklin the #5 Best Place to Live in America!

As Mayor, I am proud of the resources we offer to residents and visitors. I encourage everyone to get out and explore Franklin!

