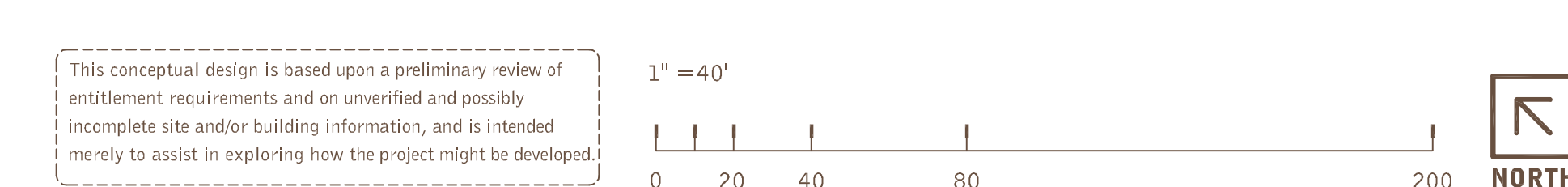


- FLOOR PLAN LEGEND**
- ▼ 9' W X 10' H INSULATED SECTIONAL OVERHEAD DOCK DOOR
  - 12' W X 14' H INSULATED SECTIONAL OVERHEAD DRIVE-IN DOOR
  - △ 3'-0" W X 7'-0" H INSULATED METAL MAN DOOR
  - △ 3'-0" W X 8'-0" H INSULATED GLAZED STOREFRONT DOOR



- FLOOR PLAN NOTES**
- |  |   |
|--|---|
| 1 CONCRETE TILT-UP PANEL, PAINTED.                         | 7 LAY-UP (DOUBLE THICK) CONCRETE TILT-UP PANEL, PAINTED.                      |
| 2 COMPOSITE METAL PANEL CLAD CANOPY ELEMENT, PRE-FINISHED. | 8 INSULATED METAL MAN DOOR, PAINTED.  |
| 3 STEEL COLUMN, PRIMED AND PAINTED.                        | 9 INSULATED SECTIONAL OVERHEAD DOCK DOOR, PRE-FINISHED.                       |
| 4 STOREFRONT DOOR(S) WITH TEMPERED INSULATED GLAZING.      | 10 DOCK LEVELER AND DOCK BUMPERS.   |
| 5 ALUMINUM ACCENT ELEMENT, PRE-FINISHED.                   | 11 INSULATED SECTIONAL OVERHEAD DRIVE-IN (GRADE LEVEL) DOOR, PRE-FINISHED.    |
| 6 INSULATED GLAZING IN THERMALLY BROKEN ALUMINUM FRAME.    | 12 GALVANIZED STEEL STAIR WITH ADA COMPLIANT GRATING FOR TREADS AND LANDINGS. |



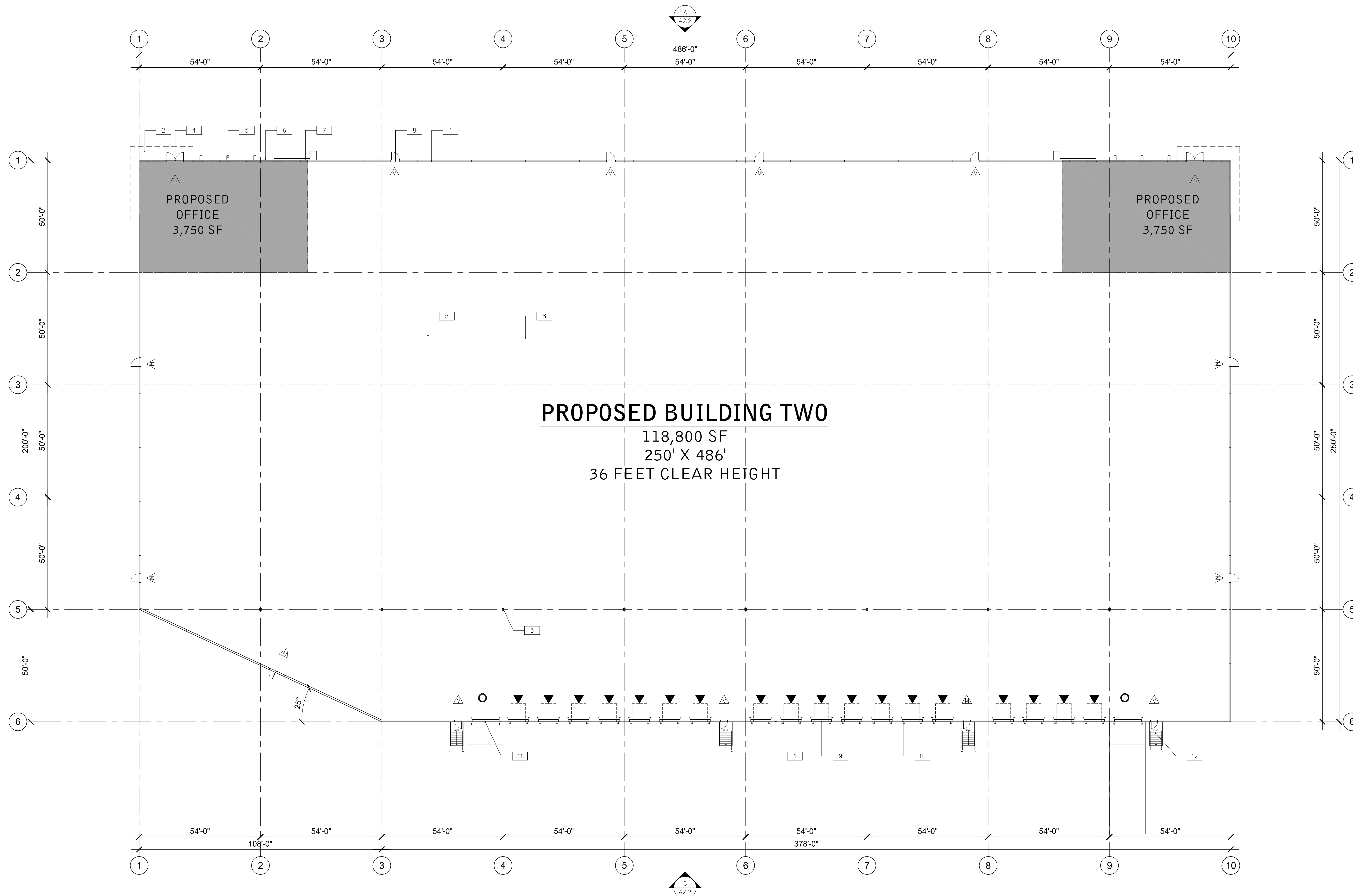
scheme: 1.0

Floor Plan - Building 1

Somerset  
Veronica Avenue, Franklin Township, New Jersey

**WARE MALCOMB**  
NJY19-0000-00  
10.10.2019

SHEET  
**A1.1**



**FLOOR PLAN NOTES**

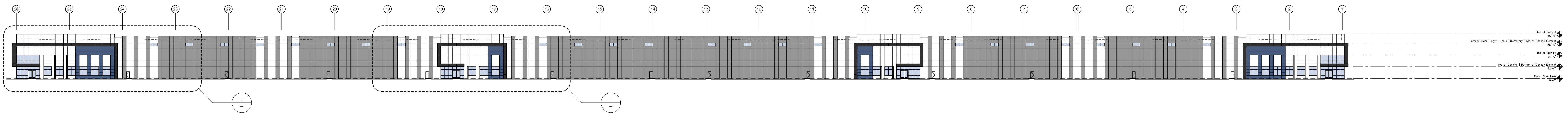
- |  |   |
|--|---|
| 1 CONCRETE TILT-UP PANEL, PAINTED.                         | 7 LAY-UP (DOUBLE THICK) CONCRETE TILT-UP PANEL, PAINTED.                      |
| 2 COMPOSITE METAL PANEL CLAD CANOPY ELEMENT, PRE-FINISHED. | 8 INSULATED METAL MAN DOOR, PAINTED.  |
| 3 STEEL COLUMN, PRIMED AND PAINTED.                        | 9 INSULATED SECTIONAL OVERHEAD DOCK DOOR, PRE-FINISHED.                       |
| 4 STOREFRONT DOOR(S) WITH TEMPERED INSULATED GLAZING.      | 10 DOCK LEVELER AND DOCK BUMPERS.   |
| 5 ALUMINUM ACCENT ELEMENT, PRE-FINISHED.                   | 11 INSULATED SECTIONAL OVERHEAD DRIVE-IN (GRADE LEVEL) DOOR, PRE-FINISHED.    |
| 6 INSULATED GLAZING IN THERMALLY BROKEN ALUMINUM FRAME.    | 12 GALVANIZED STEEL STAIR WITH ADA COMPLIANT GRATING FOR TREADS AND LANDINGS. |

**FLOOR PLAN LEGEND**

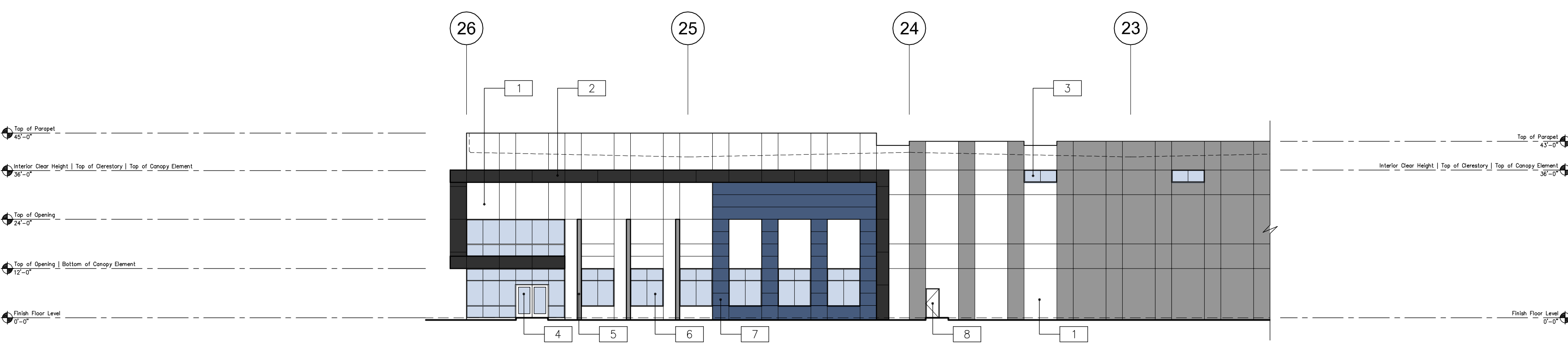
- ▼ 9' W X 10' H INSULATED SECTIONAL OVERHEAD DOCK DOOR
- 12' W X 14' H INSULATED SECTIONAL OVERHEAD DRIVE-IN DOOR
- △ 3'-0" W X 7'-6" H INSULATED METAL MAN DOOR
- △ 3'-0" W X 7'-6" H INSULATED GLAZED STOREFRONT DOOR

This conceptual design is based upon a preliminary review of entitlement requirements and on unverified and possibly incomplete site and/or building information, and is intended merely to assist in exploring how the project might be developed.

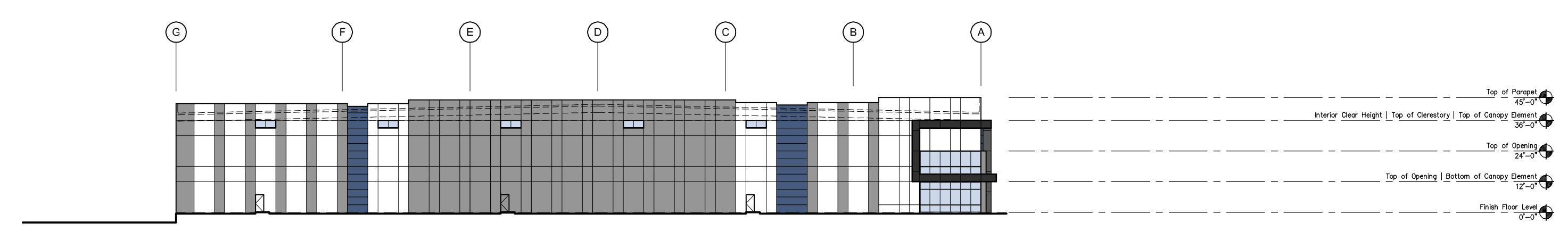




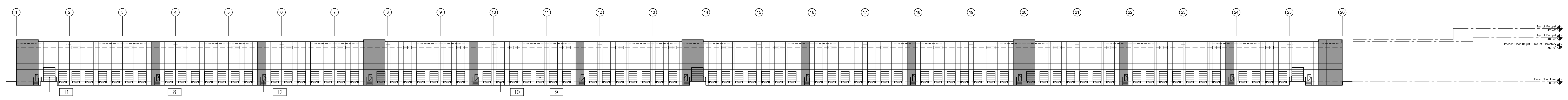
EXTERIOR ELEVATION - NORTH (A)  
SCALE: 1" = 40'-0"



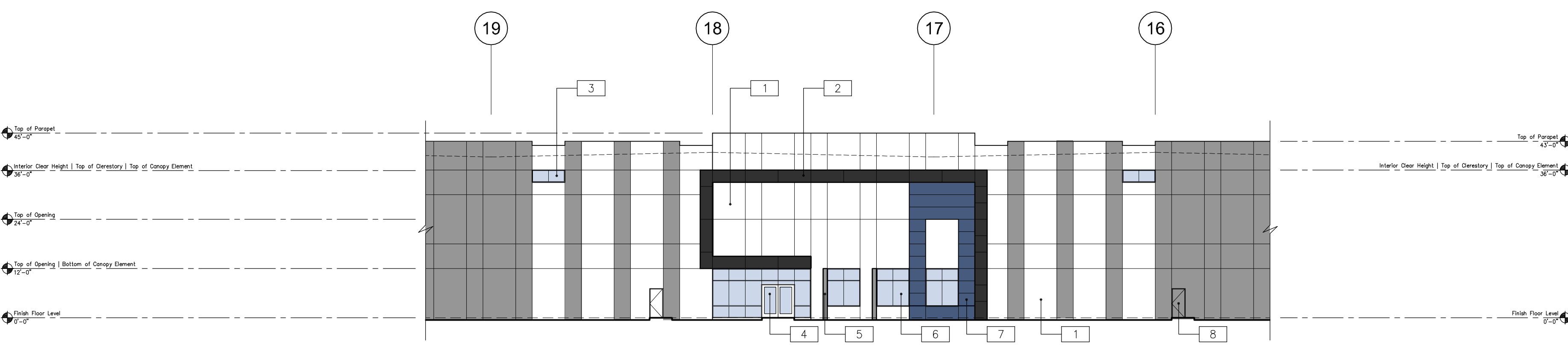
PARTIAL EXTERIOR ELEVATION - NORTH (SHOWN FOR DETAIL) (E)  
SCALE: 1" = 20'-0"



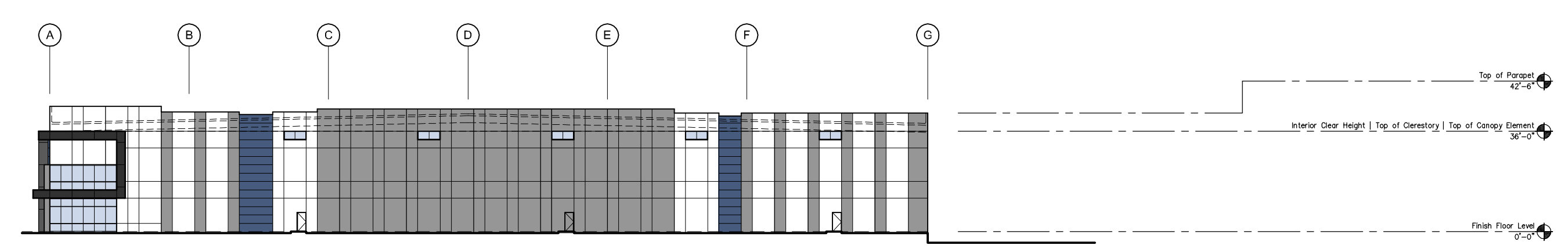
EXTERIOR ELEVATION - EAST (B)  
SCALE: 1" = 40'-0"



EXTERIOR ELEVATION - SOUTH (C)  
SCALE: 1" = 40'-0"

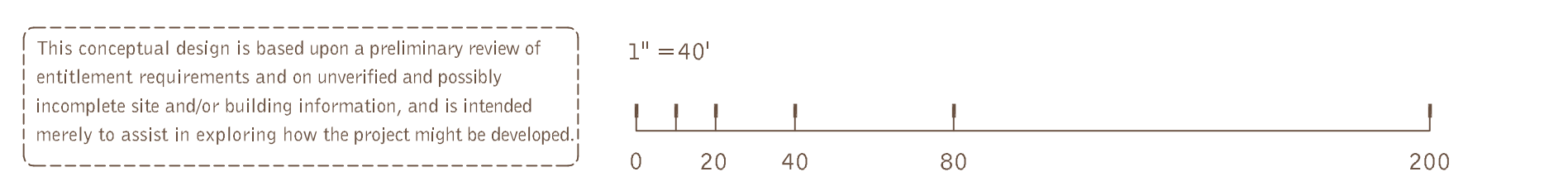


PARTIAL EXTERIOR ELEVATION - NORTH (SHOWN FOR DETAIL) (F)  
SCALE: 1" = 20'-0"



EXTERIOR ELEVATION - WEST (D)  
SCALE: 1" = 40'-0"

- ELEVATION NOTES**
- 1 CONCRETE TILT-UP PANEL, PAINTED.
  - 2 COMPOSITE METAL PANEL CLAD CANOPY ELEMENT, PRE-FINISHED.
  - 3 INSULATED CLERESTORY GLAZING IN THERMALLY BROKEN ALUMINUM FRAME.
  - 4 STOREFRONT DOOR(S) WITH TEMPERED INSULATED GLAZING.
  - 5 ALUMINUM ACCENT ELEMENT, PRE-FINISHED.
  - 6 INSULATED GLAZING IN THERMALLY BROKEN ALUMINUM FRAME.
  - 7 LAY-UP (DOUBLE THICK) CONCRETE TILT-UP PANEL, PAINTED.
  - 8 INSULATED METAL MAN DOOR, PAINTED.
  - 9 INSULATED SECTIONAL OVERHEAD DOCK DOOR, PRE-FINISHED.
  - 10 DOCK LEVELER AND DOCK BUMPERS.
  - 11 INSULATED SECTIONAL OVERHEAD DRIVE-IN (GRADE LEVEL) DOOR, PRE-FINISHED.
  - 12 GALVANIZED STEEL STAIR WITH ADA COMPLIANT GRATING FOR TREADS AND LANDINGS.



scheme: 1.0

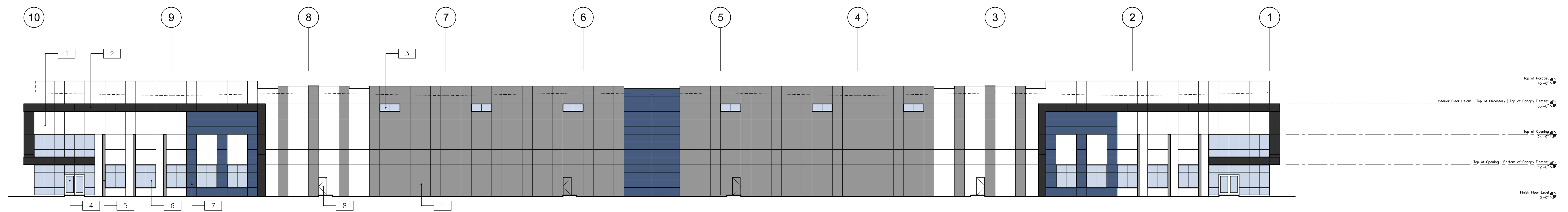
Exterior Elevation - Building 1

Somerset  
Veronica Avenue, Franklin Township, New Jersey

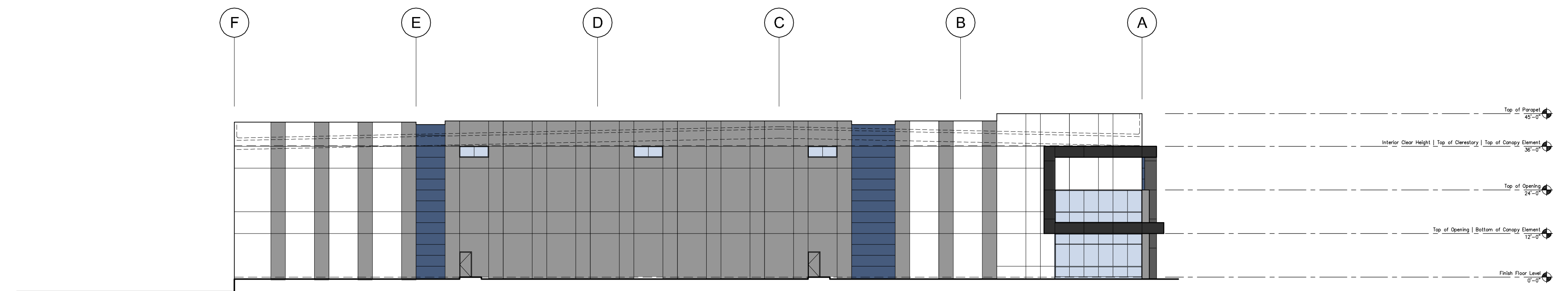
WARE MALCOMB

NJY19-0000-00  
10.10.2019

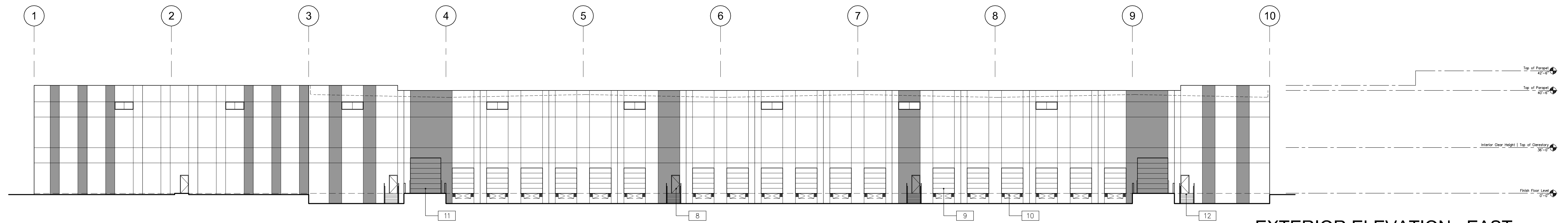
SHEET  
A2.1



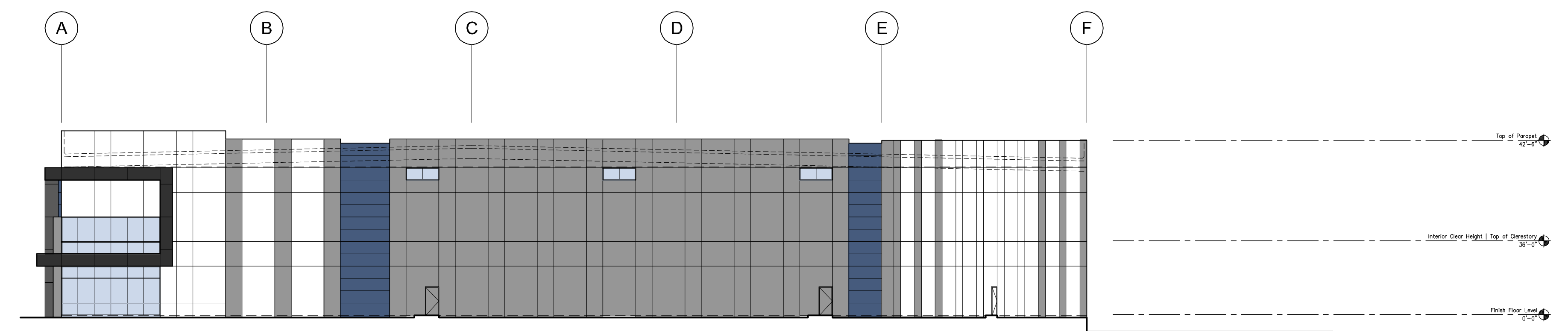
EXTERIOR ELEVATION - WEST  
SCALE: 1" = 20'-0" (A)



EXTERIOR ELEVATION - NORTH  
SCALE: 1" = 20'-0" (B)



EXTERIOR ELEVATION - EAST  
SCALE: 1" = 20'-0" (C)



EXTERIOR ELEVATION - SOUTH  
SCALE: 1" = 20'-0" (D)

**ELEVATION NOTES**

- |  |  |
|--|--|
| 1 CONCRETE TILT-UP PANEL, PAINTED.                                 | 7 LAY-UP (DOUBLE THICK) CONCRETE TILT-UP PANEL, PAINTED.                     |
| 2 COMPOSITE METAL PANEL CLAD CANOPY ELEMENT, PRE-FINISHED.         | 8 INSULATED METAL MAN DOOR, PAINTED.   |
| 3 INSULATED CLERESTORY GLAZING IN THERMALLY BROKEN ALUMINUM FRAME. | 9 INSULATED SECTIONAL OVERHEAD DOCK DOOR, PRE-FINISHED.                      |
| 4 STOREFRONT DOOR(S) WITH TEMPERED INSULATED GLAZING.              | 10 DOCK LEVELER AND DOCK BUMPERS.  |
| 5 ALUMINUM ACCENT ELEMENT, PRE-FINISHED.                           | 11 INSULATED SECTIONAL OVERHEAD DRIVE-IN (GRADE LEVEL) DOOR, PRE-FINISHED.   |
| 6 INSULATED GLAZING IN THERMALLY BROKEN ALUMINUM FRAME.            | 12 GALVANIZED STEEL STAIR WITH ADA COMPLIANT GRATING FOR TREADS AND LANDING. |

This conceptual design is based upon a preliminary review of entitlement requirements and an unverified and possibly incomplete site and/or building information, and is intended merely to assist in exploring how the project might be developed.

