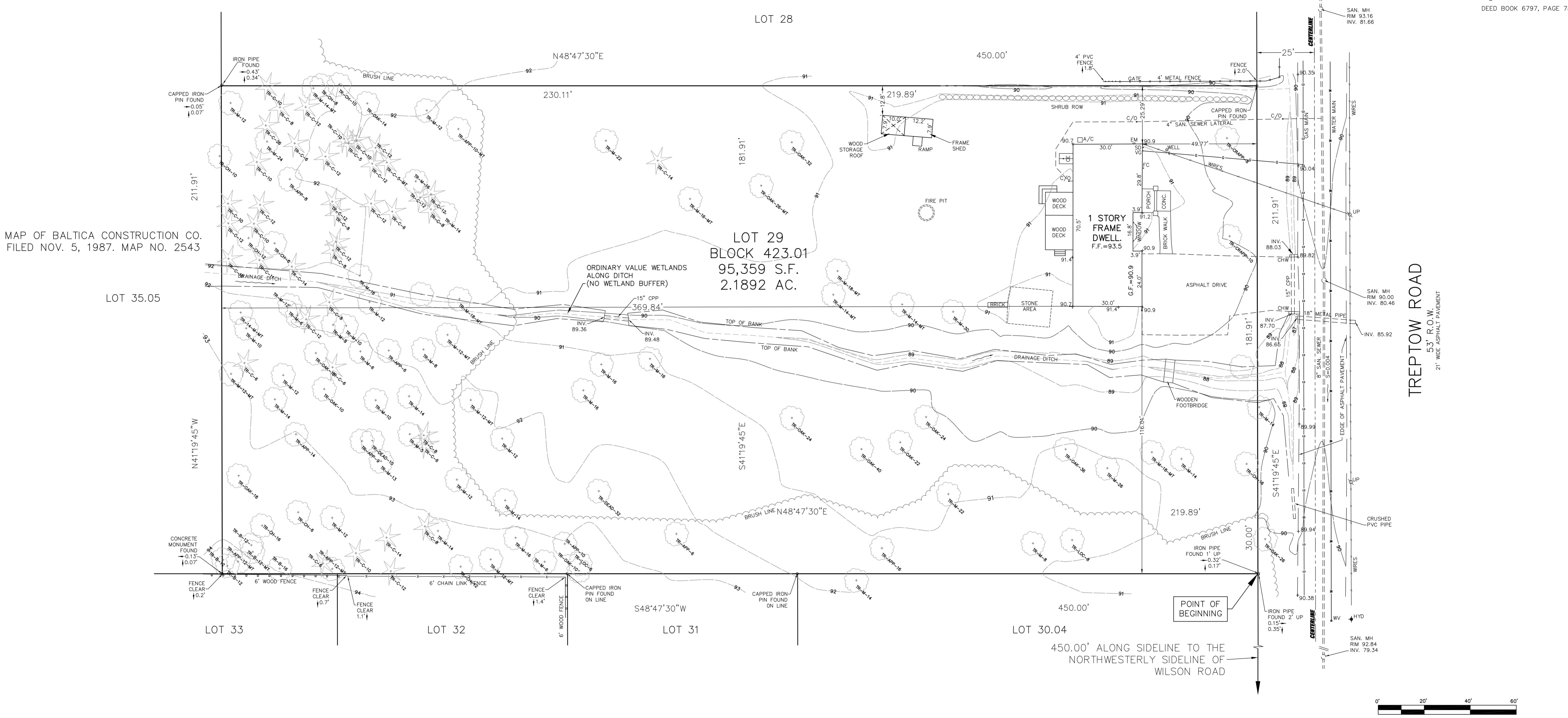
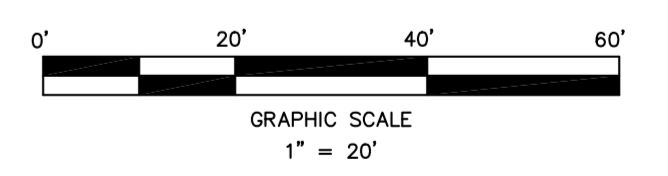


BEING ALSO KNOWN AS LOTS 18 & 19  
IN BLOCK S-19 ON A "MAP OF  
MIDDLEBUSH FARMS", AS FILED IN THE  
SOMERSET COUNTY CLERK'S OFFICE  
ON APRIL 15, 1946 AS MAP NO. 160.



MAP OF BALTICA CONSTRUCTION CO.  
FILED NOV. 5, 1987. MAP NO. 2543

TREPTOW ROAD  
53' R.O.W.  
21' WIDE ASPHALT PAVEMENT



**NOTES:**

- ELEVATIONS ARE BASED ON ASSUMED DATUM.
- WETLANDS LETTER OF INTERPRETATION ISSUED BY NJDEP ON AUGUST 23, 2019. FILE NO. 1808-19-0007.1.
- IN ACCORDANCE WITH FEMA MAP 34035C0169 E FOR SOMERSET COUNTY, EFFECTIVE SEPT. 28, 2007, LOT 29, BLOCK 423.01 IS NOT LOCATED WITHIN A FLOOD PLAIN.
- EXISTING CONDITIONS AS SURVEYED BY FISK ASSOCIATES, P.A. OCTOBER 9, 2019.

**- TREE LEGEND -**

- TREE KEY
- AP-18 CALIPER (INCHES)
  - KEY TREE
  - AP = APPLE
  - B = BIRCH
  - C = CEDAR
  - CA = CRAB APPLE
  - CH = CHERRY
  - DE = DEAD
  - K = OAK
  - L = LOCUST
  - M = MAPLE
  - MT = MULTI-TRUNK

- DECIDUOUS TREE
- CONIFEROUS TREE

**LEGEND**

- A/C = AIR CONDITIONER
- C/O = CLEANOUT
- CE = CELLAR ENTRANCE
- CHW = CONCRETE HEADWALL
- CONC. = CONCRETE
- EM = ELECTRIC METER
- FC = FUEL CAP
- F.F. = FINISHED FLOOR ELEVATION
- G.F. = GARAGE FLOOR ELEVATION
- HYD. = HYDRANT
- INV. = INVERT ELEVATION
- SD = SUMP DISCHARGE
- UP = UTILITY POLE
- VG = VENT FOR GAS
- WV = WATER VALVE

<b>FISK ASSOCIATES, P.A.</b> ENGINEERS - SURVEYORS - PLANNERS 631 UNION AVENUE MIDDLESEX, NEW JERSEY 08846 Phone: 732-356-9322 Fax: 732-356-6015 FISKASSOCIATES@AOL.COM			
02/21/2020		<b>STEPHEN M. FISK, L.S., LIC.# 23919</b> <b>ROBERT GAZZALE, P.E., L.S., LIC# 35363</b> L.S. - NEW JERSEY PROFESSIONAL LAND SURVEYOR P.E. - NEW JERSEY PROFESSIONAL ENGINEER	
<b>MAP OF SURVEY</b> <b>EXISTING CONDITIONS</b> <b>220 TREPTOW ROAD</b> <b>LOT 29 BLOCK 423.01</b> <b>TOWNSHIP OF FRANKLIN</b> <b>SOMERSET COUNTY NEW JERSEY</b>			
SCALE: 1" = 20' FIELD BOOK/PAGE: 436/742		JOB#: FR-5857 SHEET: 2	
DATE: FEBRUARY 21, 2020 DRAWN BY: EAST		REVISIONS	