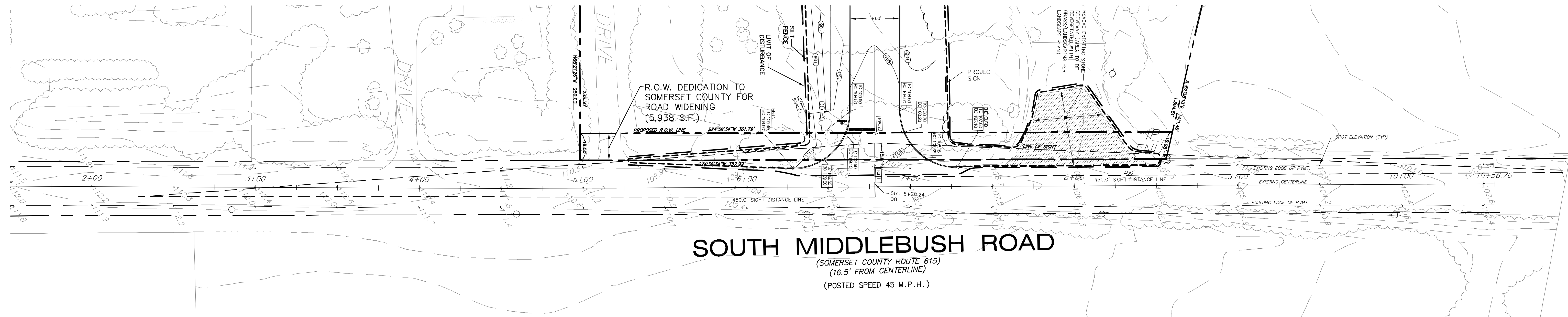
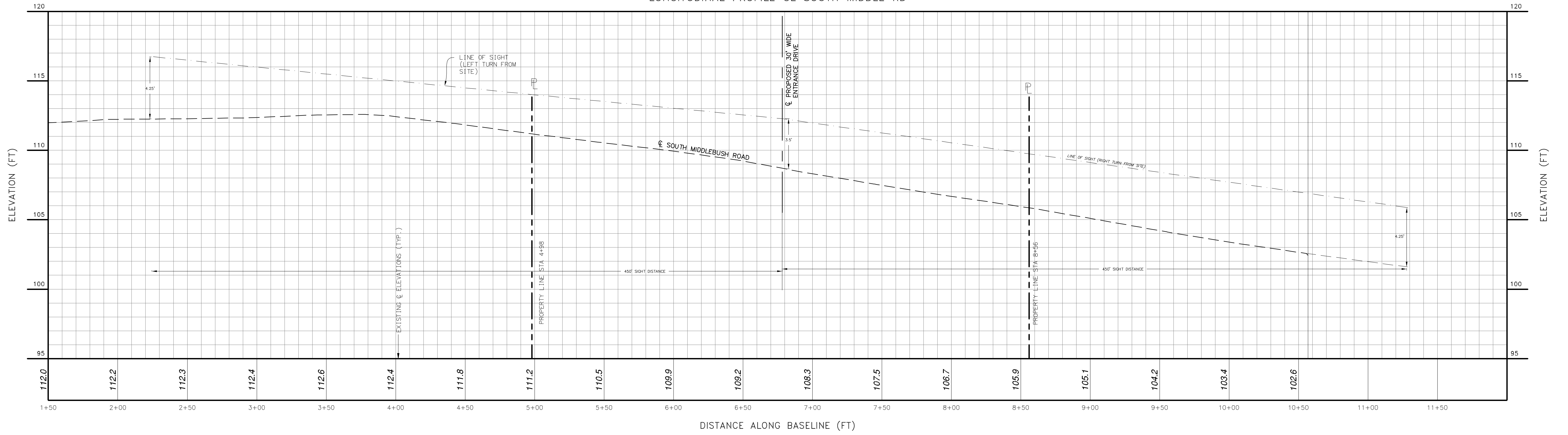
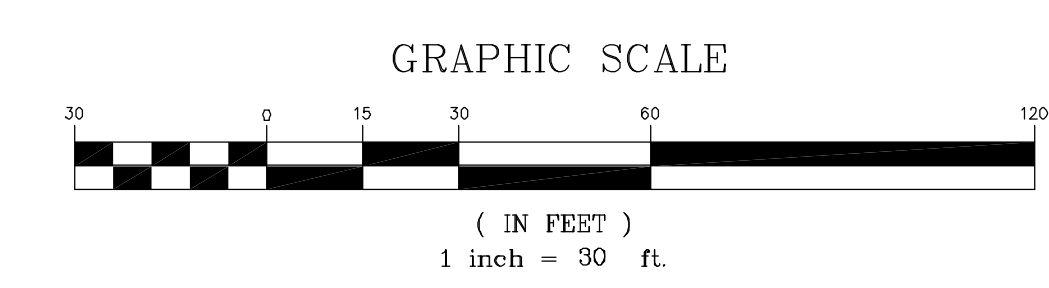


LONGITUDINAL PROFILE CL SOUTH MIDDLE RD



SOUTH MIDDLEBUSH ROAD
 (SOMERSET COUNTY ROUTE 615)
 (16.5' FROM CENTERLINE)
 (POSTED SPEED 45 M.P.H.)

NOTE:
 ALL SIGHT OBSTRUCTIONS WITHIN SIGHT TRIANGLE AREA SHALL BE CLEARED AND THE AREA IS TO BE RESTORED AS DIRECTED BY THE COUNTY ENGINEER



NO.	DESCRIPTION	DATE	BY
1	REV. PER TWP / STAFF/AGENCIES COMMENTS, DEP COMMENTS, SCD COMMENTS, COUNTY COMMENTS	7/20/20	SH
2		7/6	JP

CREST
 Engineering Associates Inc.
 Civil & Environmental Engineers
 Professional Planners • Surveyors • Landscape Architects
 CERTIFICATE OF AUTHORIZATION NO. 246A27889300

100 RKE DRIVE
 MILLSTONE TOWNSHIP, N.J. 08535
 (609)448-5200

12 ROBBINS PKWY.
 41 WILSON STREET
 1000 RIVER NJ 08755
 (609)252-4100

JAYESH S. PATEL, P.E.
 PROFESSIONAL ENGINEER N.J. LIC. NO. 35306

DATE: 9/10/19
 SCALE: H 1"=30' V 1"=3'
 DRAWN: M.F.
 CHECKED: J.P.
 SHEET: 9 OF 13
 PROJECT: 83

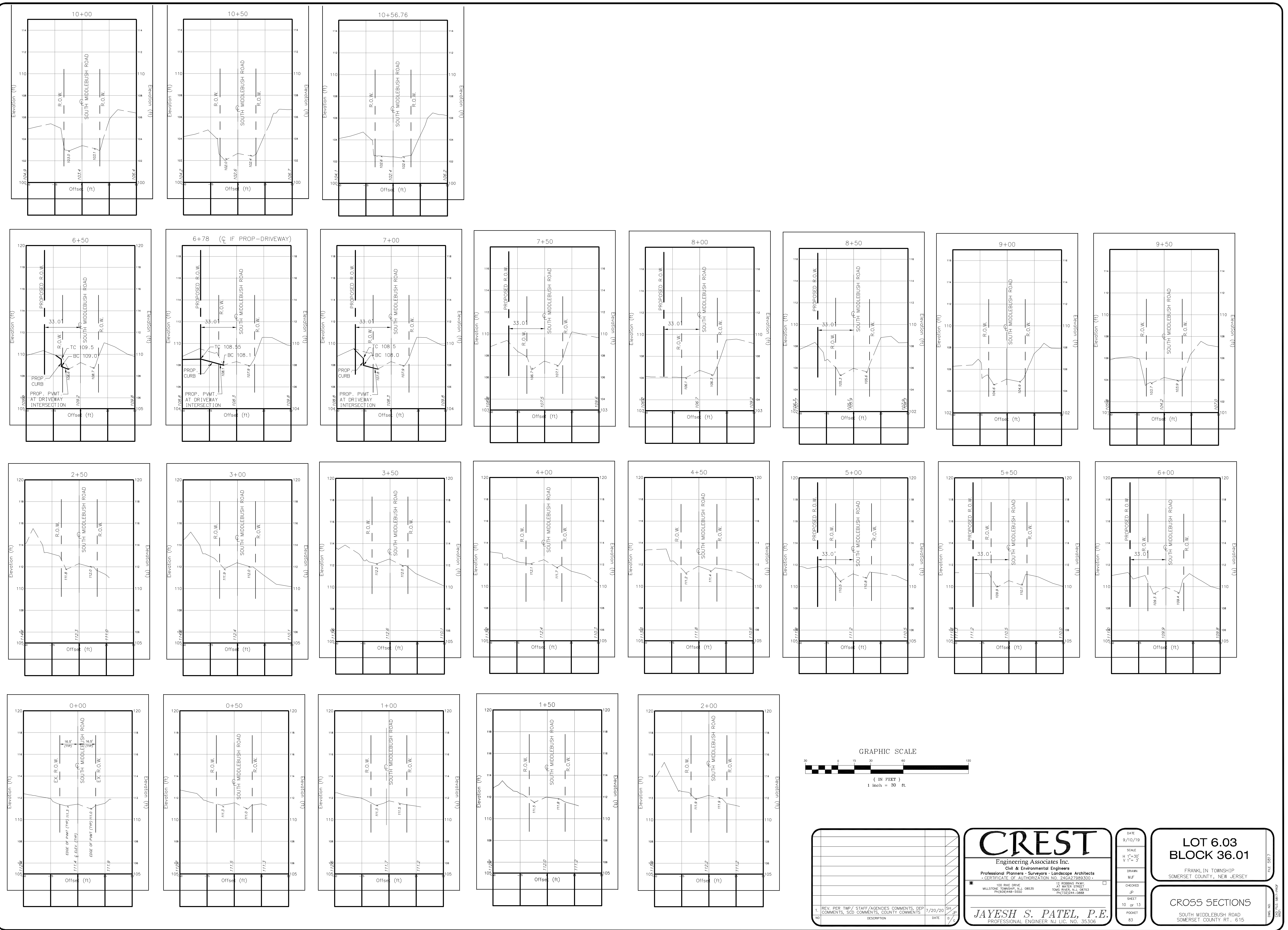
**LOT 6.03
 BLOCK 36.01**

FRANKLIN TOWNSHIP
 SOMERSET COUNTY, NEW JERSEY

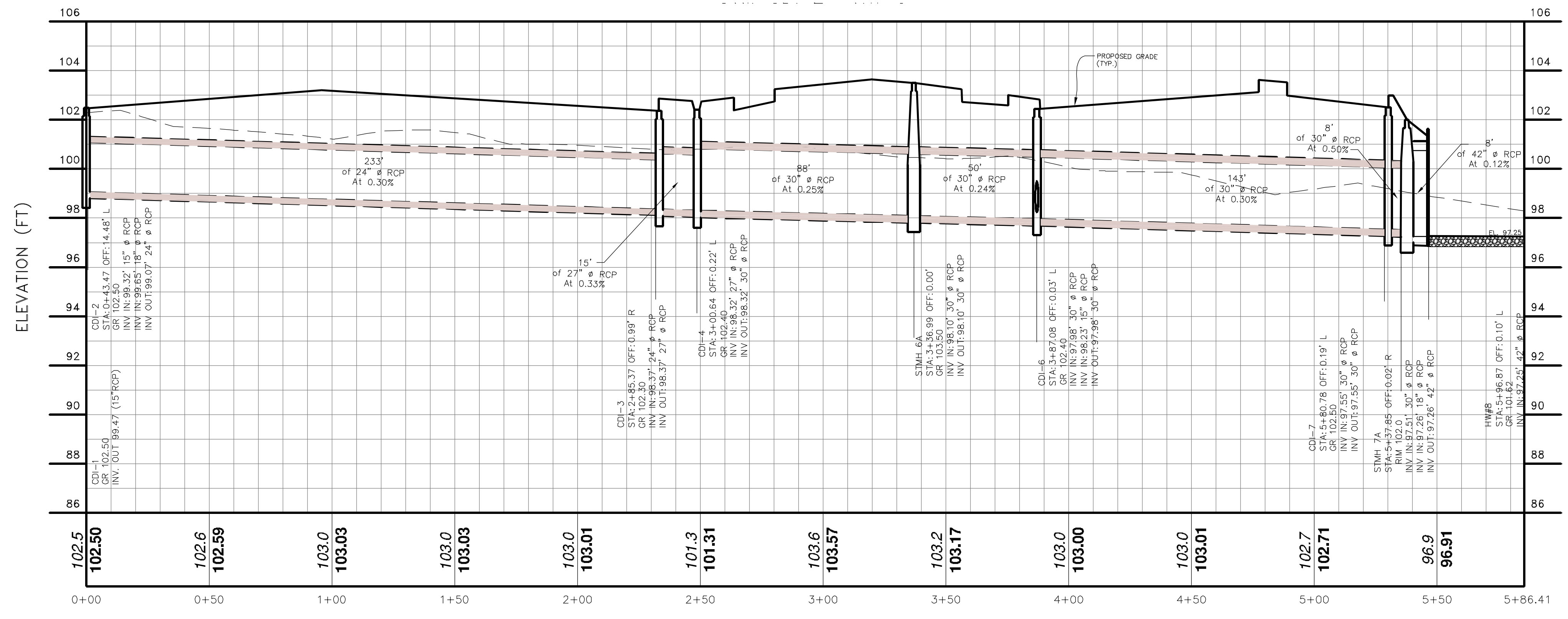
PLAN & PROFILE

SOUTH MIDDLEBUSH ROAD
 SOMERSET COUNTY, RT. 615

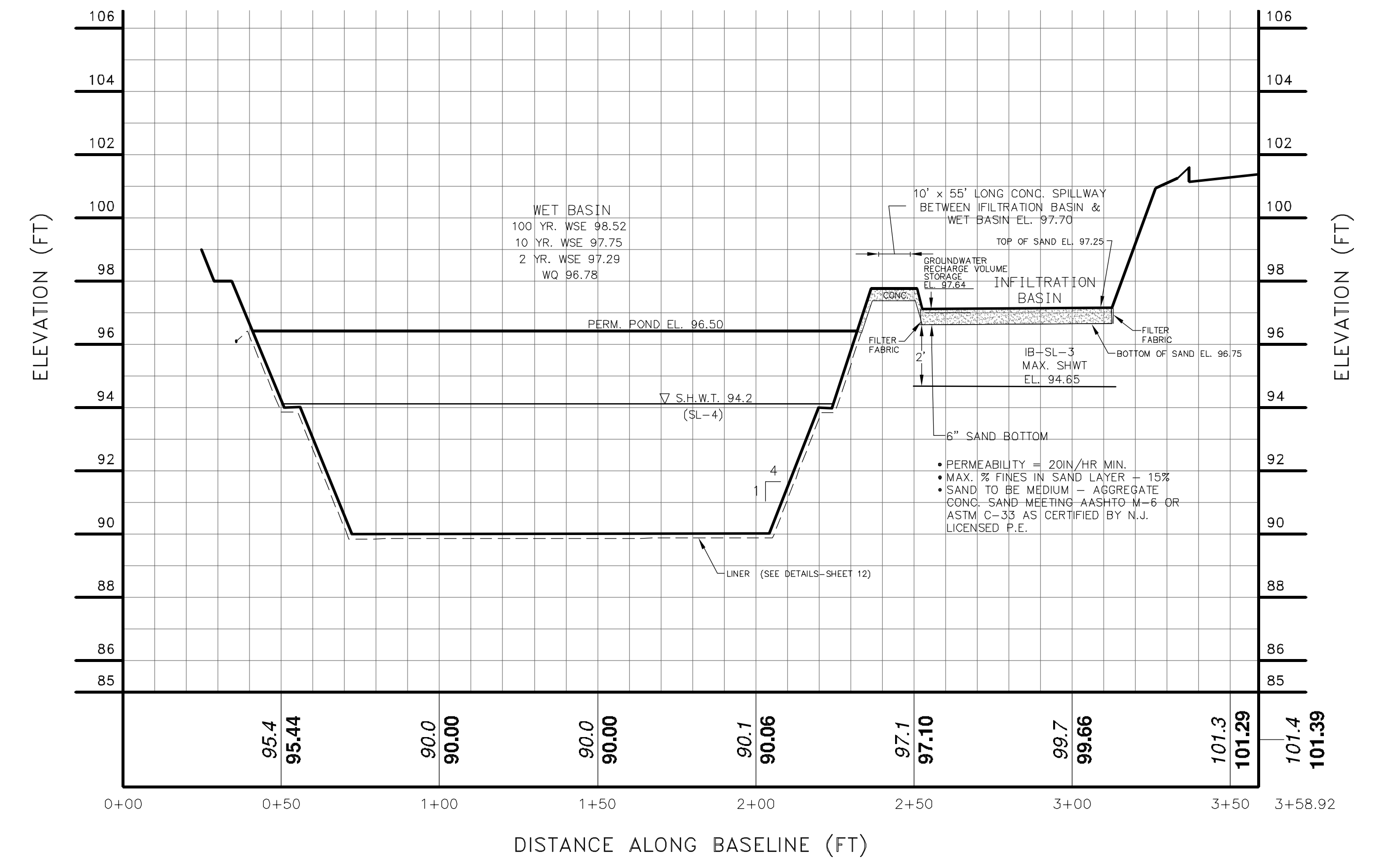
Z:\shared\drawings\501-6000-9817-DESIGN PLANS CSD-5817-PROP.DWG COUNTY CROSS SECTIONS: 7/14/2020 3:31:19 PM
 11. STATION 113 - CD



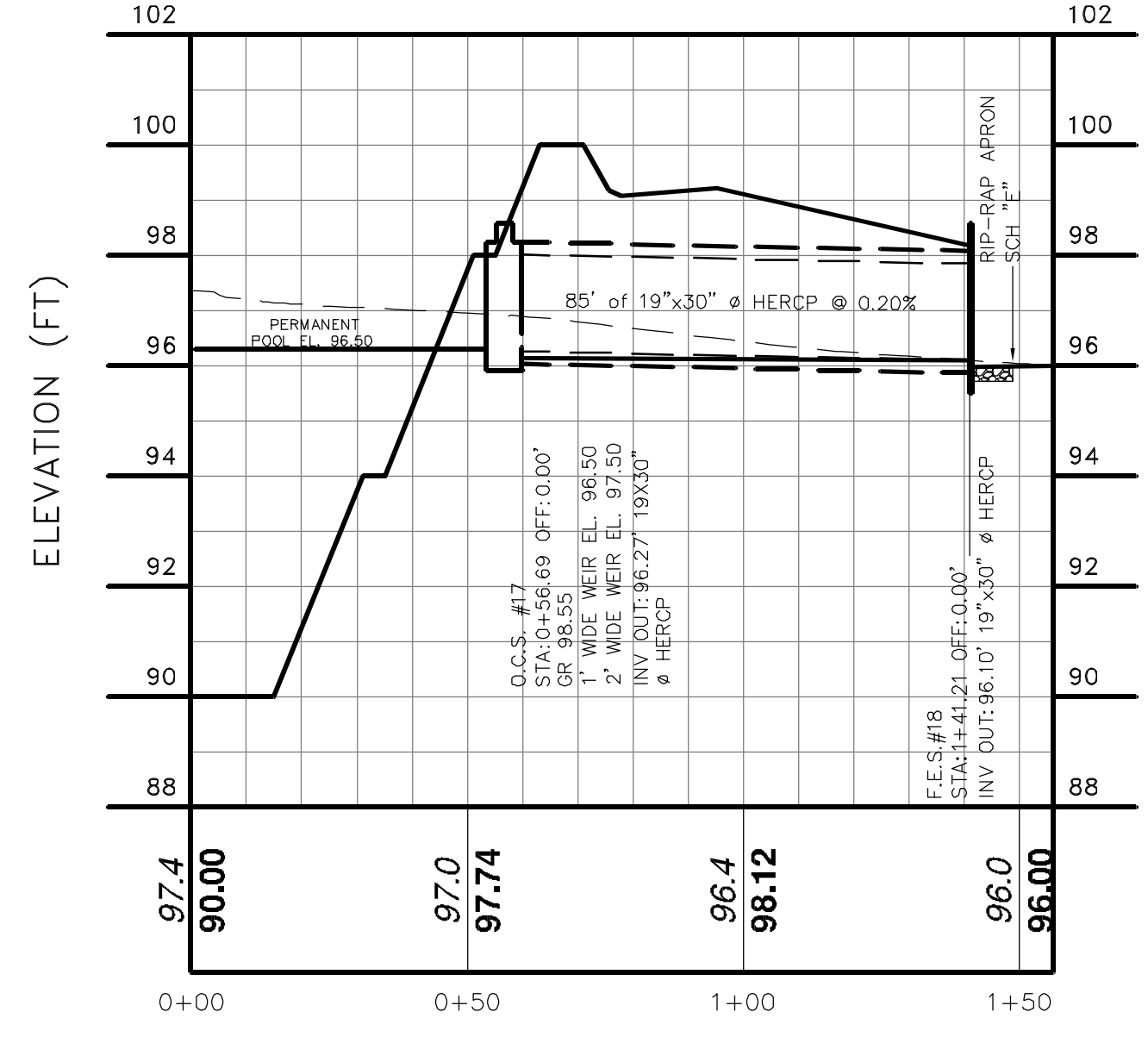
CSD-DWG-30



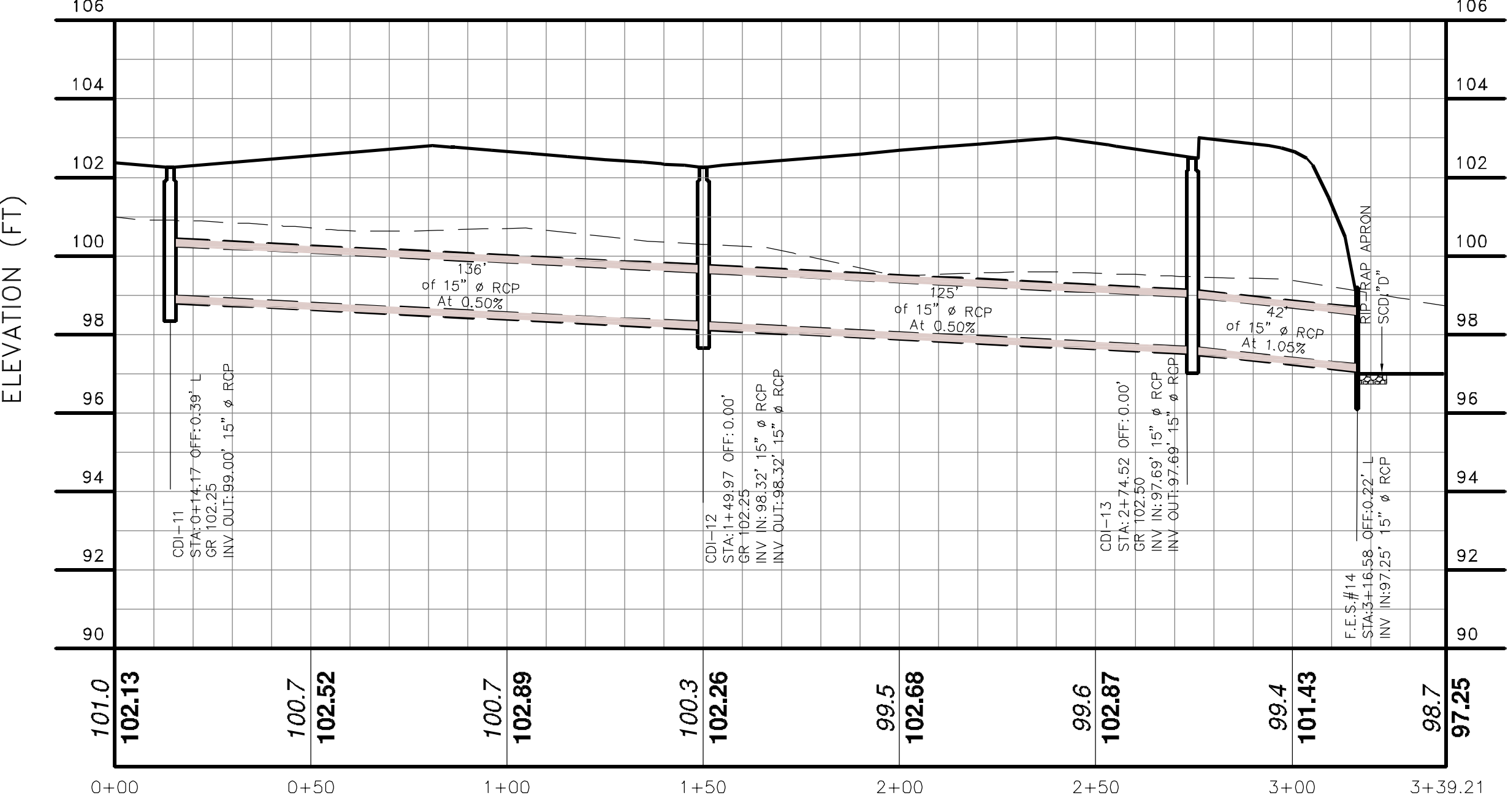
CDI-1 TO HW#8



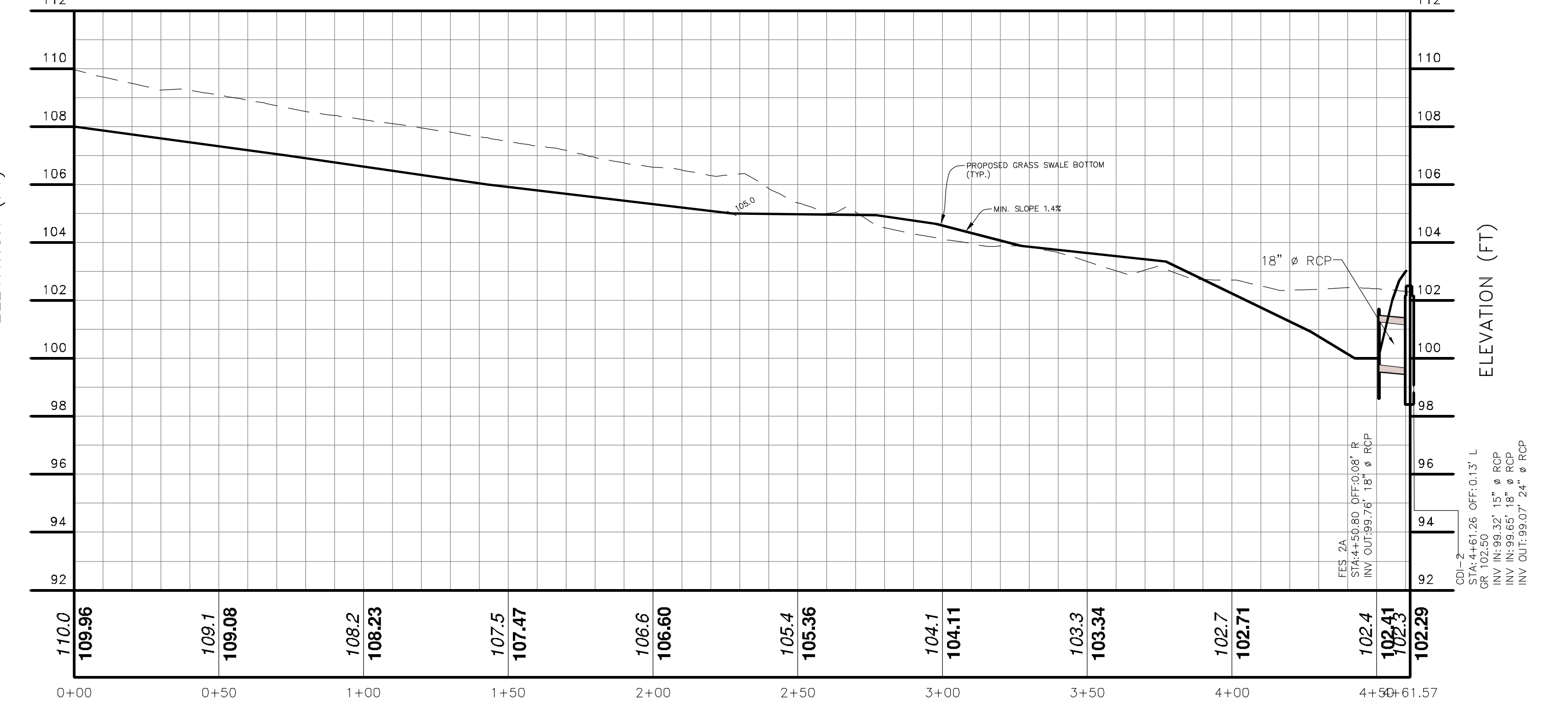
SECTION A-A WET BASIN/INFILTRATION BASIN



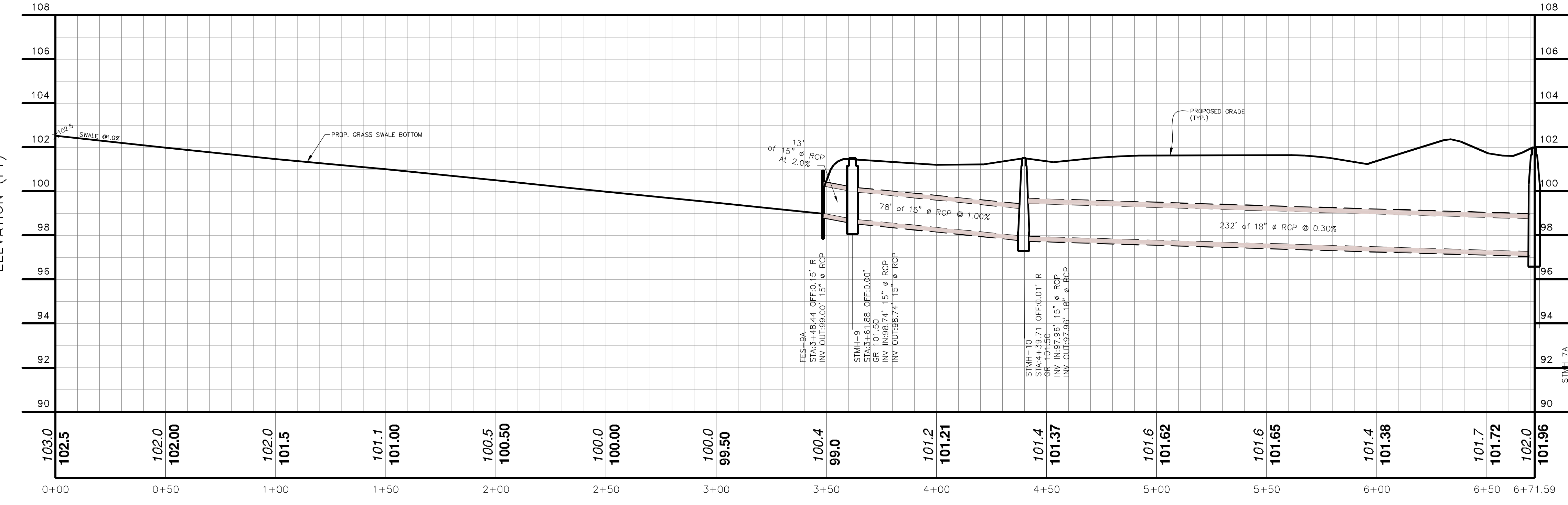
O.C.S. #17 TO F.E.S. 18



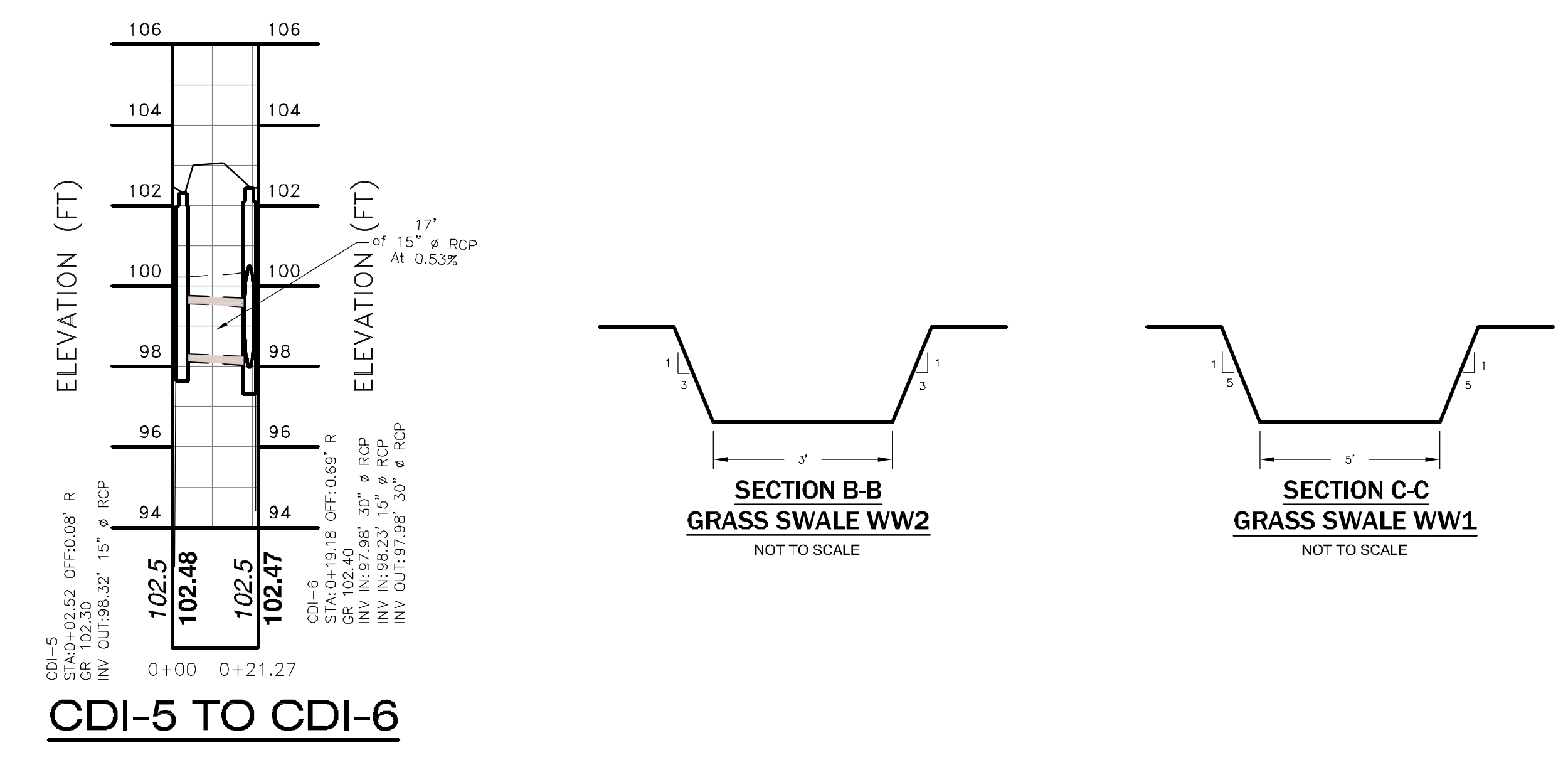
CDI-11 TO F.E.S. #14



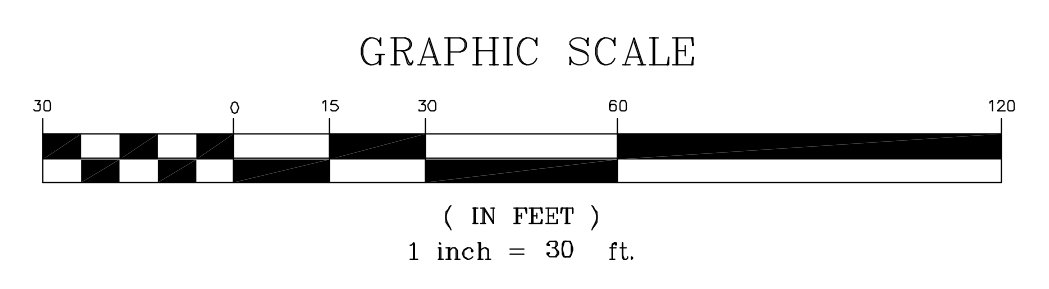
SWALE WW1 TO CD-2



SWALE WW2 TO CDI-7A



CDI-5 TO CDI-6



NO.	DESCRIPTION	DATE	BY
1	REV. PER TWP/STAFF/AGENCIES COMMENTS, DEP COMMENTS, SCD COMMENTS, COUNTY COMMENTS	7/20/20	SH
2	REV. PER NJDEP COMMENTS OF 10/22/19 & COMPLETENESS REVIEW COMMENTS BY TOWNSHIP	11/6/19	SH

CREST
Engineering Associates Inc.
Civil & Environmental Engineers
Professional Planners - Surveyors - Landscape Architects
101 RINE DRIVE
MILLSBORO, NEW JERSEY 08253
PH: 856.486.5500

JAYESH S. PATEL, P.E.
PROFESSIONAL ENGINEER NJ LIC. NO. 35306

DATE: 9/10/19
SCALE: H 1"=30' V 1"=3'
DRAWN: M.F.
CHECKED: J.P.
SHEET: 11 OF 13
PROJECT: 83

LOT 6.03
BLOCK 36.01
FRANKLIN TOWNSHIP
SOMERSET COUNTY, NEW JERSEY

STORM PROFILES

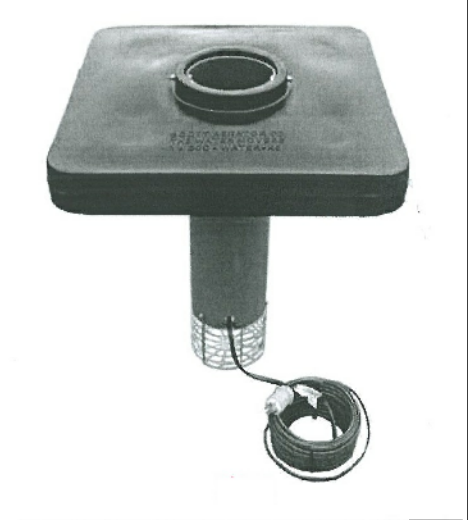


DA-20 Display Aerator
Aerating Fountain

The DA-20 Display Aerator is the proven solution for keeping your water sparkling clean while simultaneously providing beauty and healthy aeration.

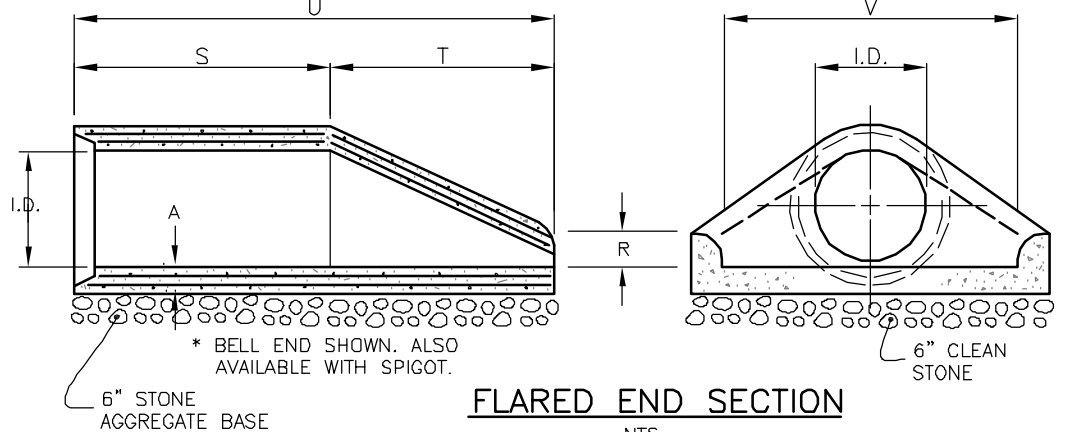
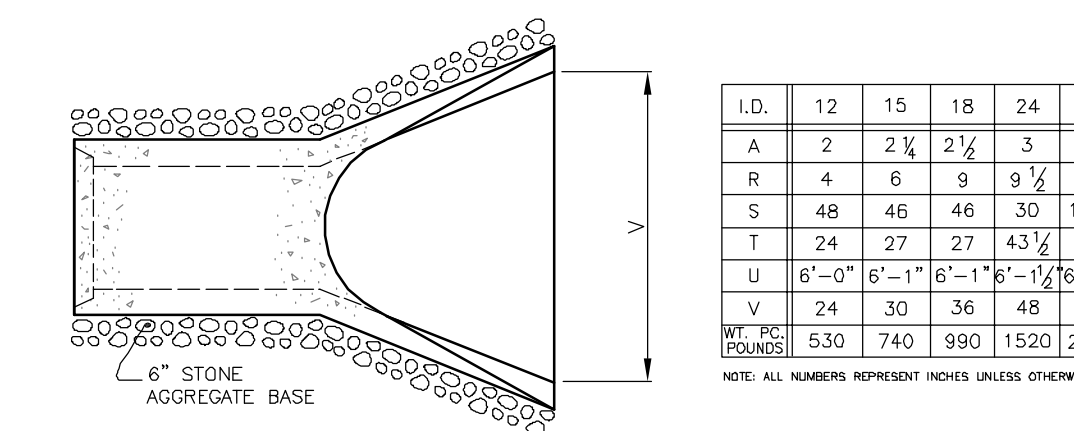
The Scott Aerator Company's focus is to supply the client with the highest quality, value-based American made water aerators and pond fountains on the market. A family owned business for over 40 years offering:

- Most environmentally friendly system on the market
- Oil free, stainless steel submersible motor
- Industry leading, 5 year motor warranty
- No Maintenance
- Designed for 24-hour continuous operation
- Salt water approved
- Light sets available
- Made in the U.S.A.

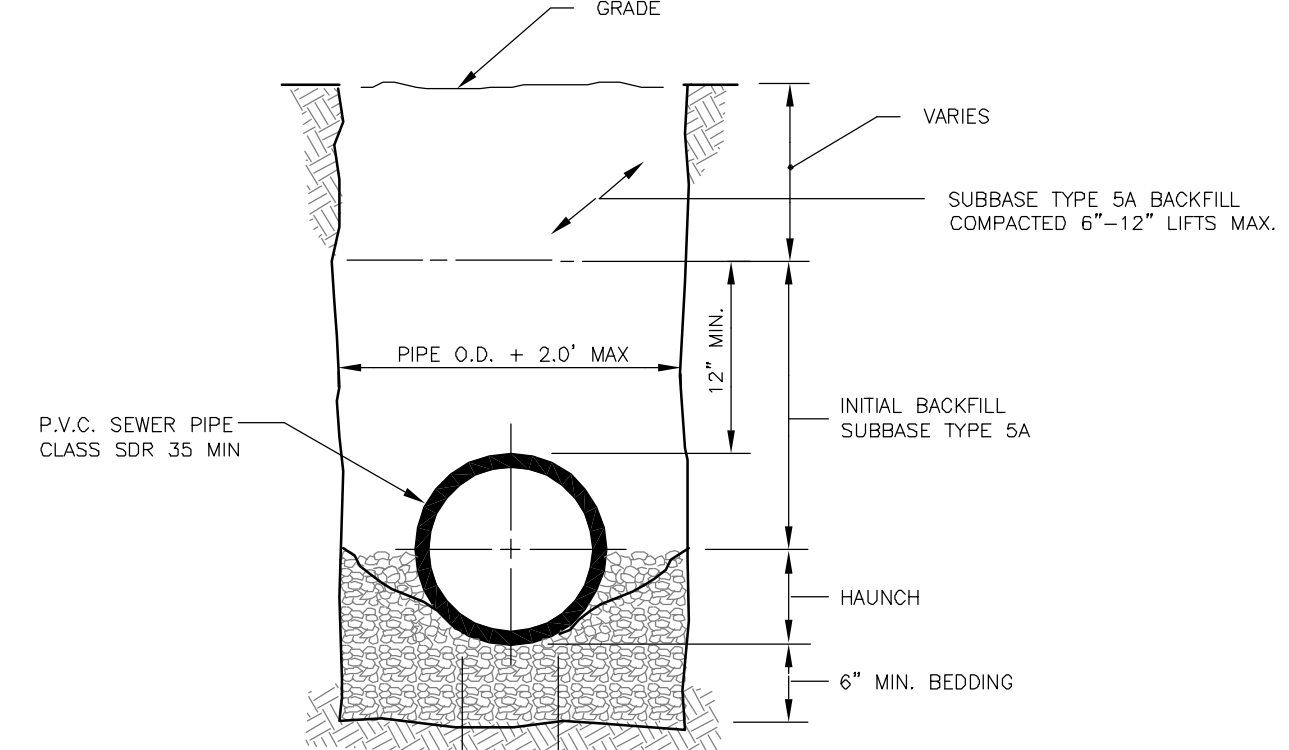
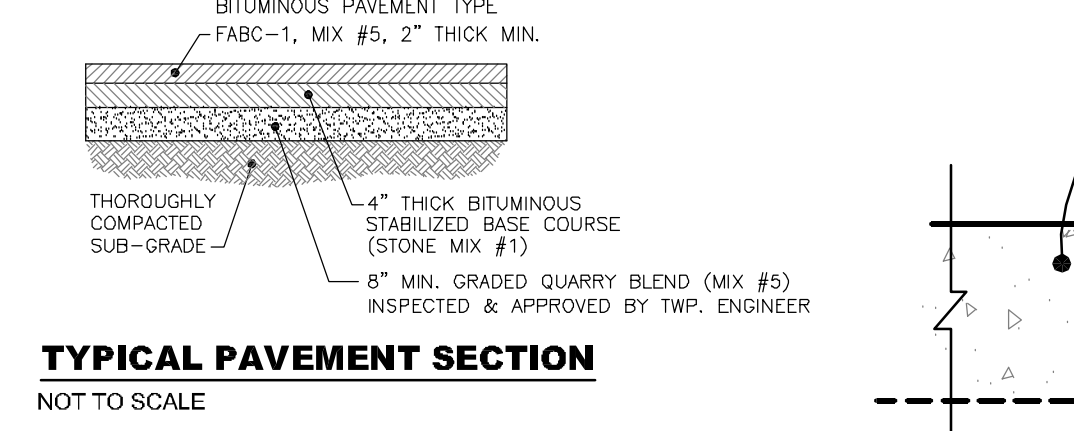
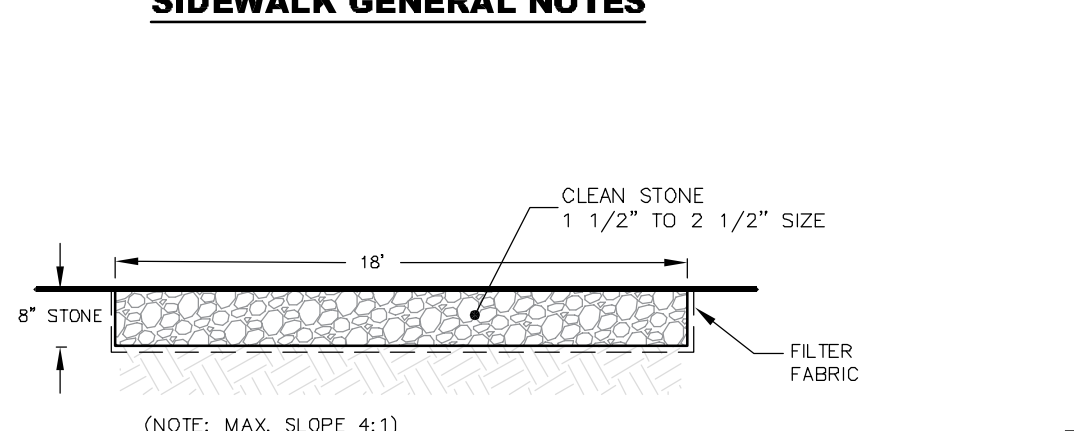


Motor	1/2	3/4	1	1 1/2	2
Display Fountain (ft)	5.5	7	10	13	17
Display Fountain (in)	23	28	39	51	67
Display Fountain (in)	23	28	39	51	67
Volume	115	150	200	270	350
Power Cord (ft)	75	75	100	100	100
Power Cord (gauge)	12	12	12	12	12

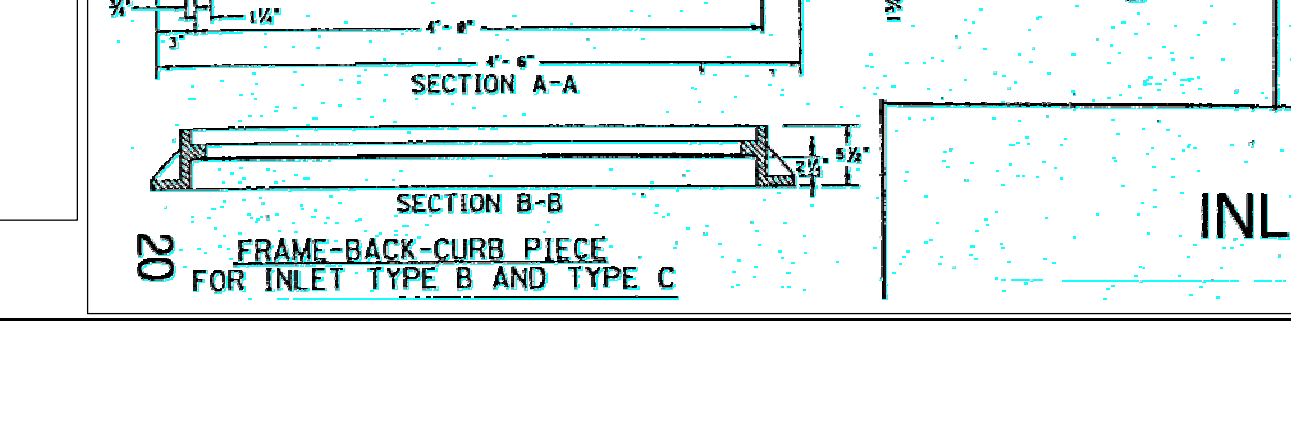
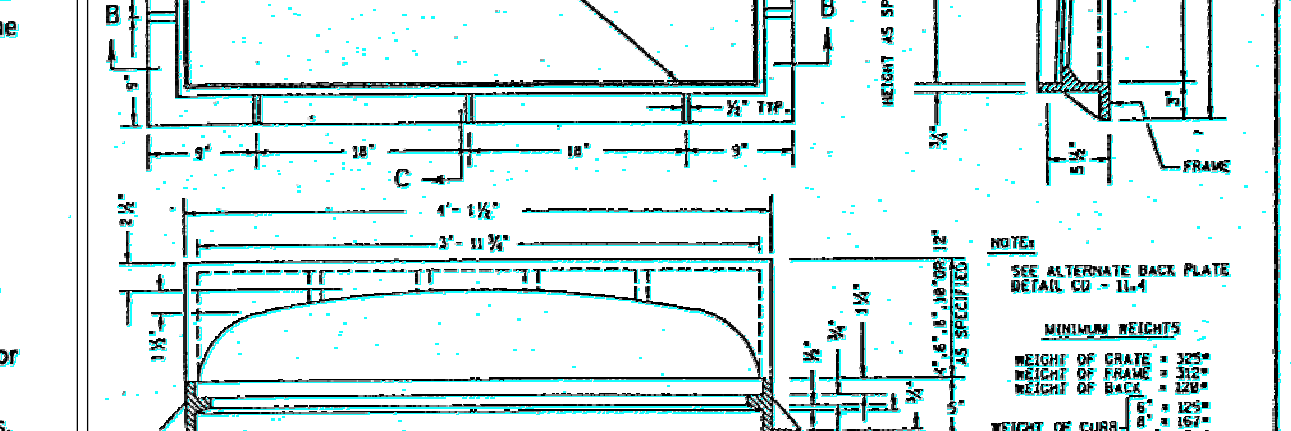
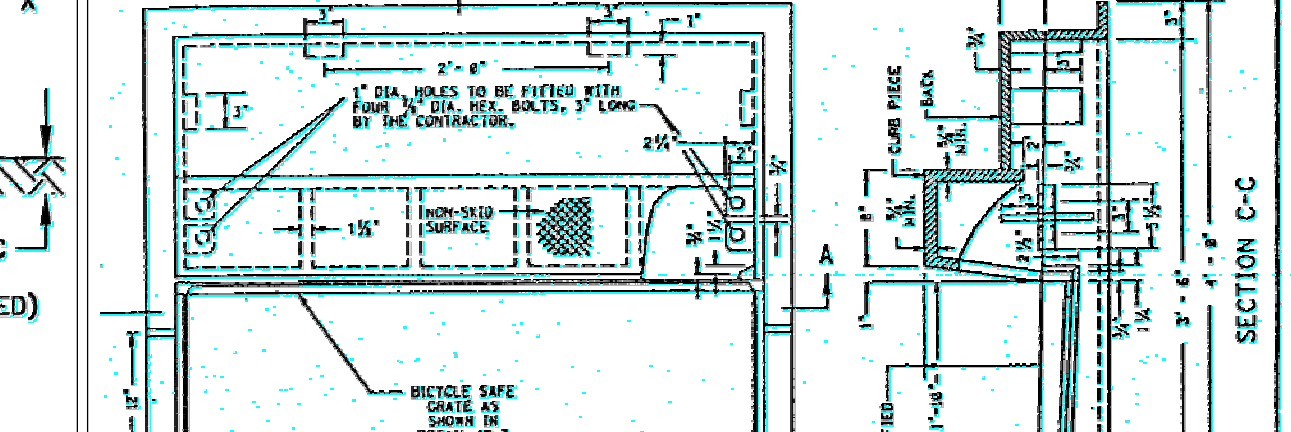
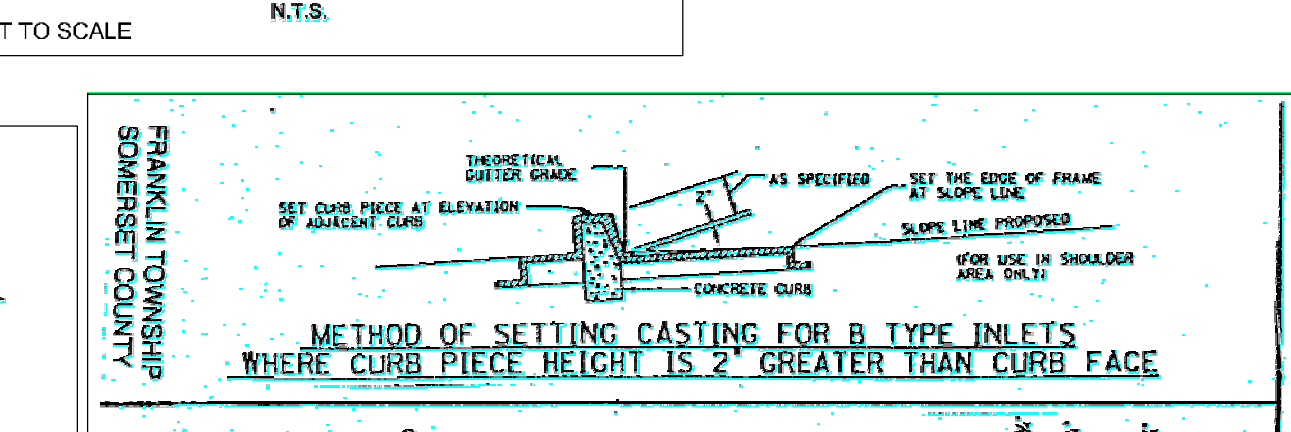
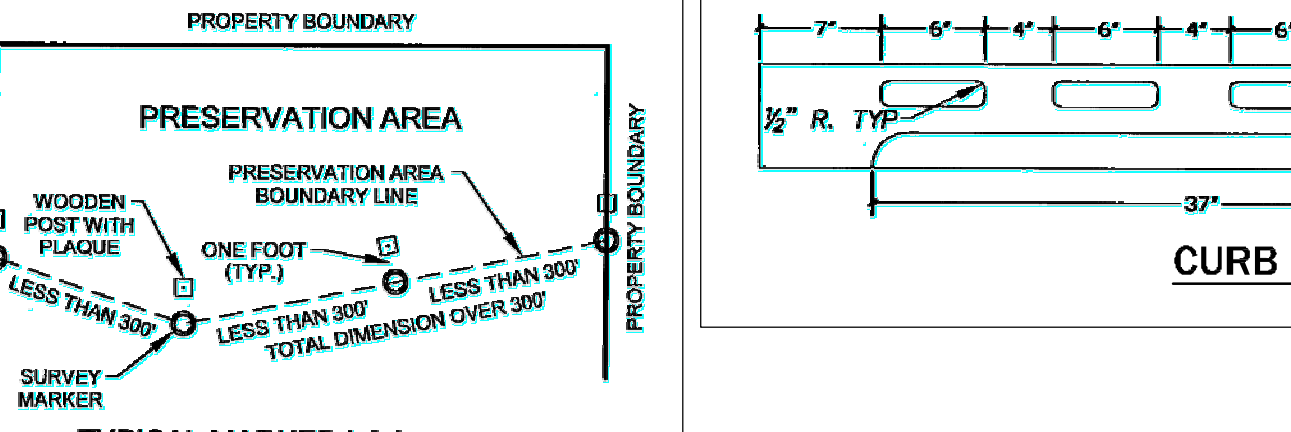
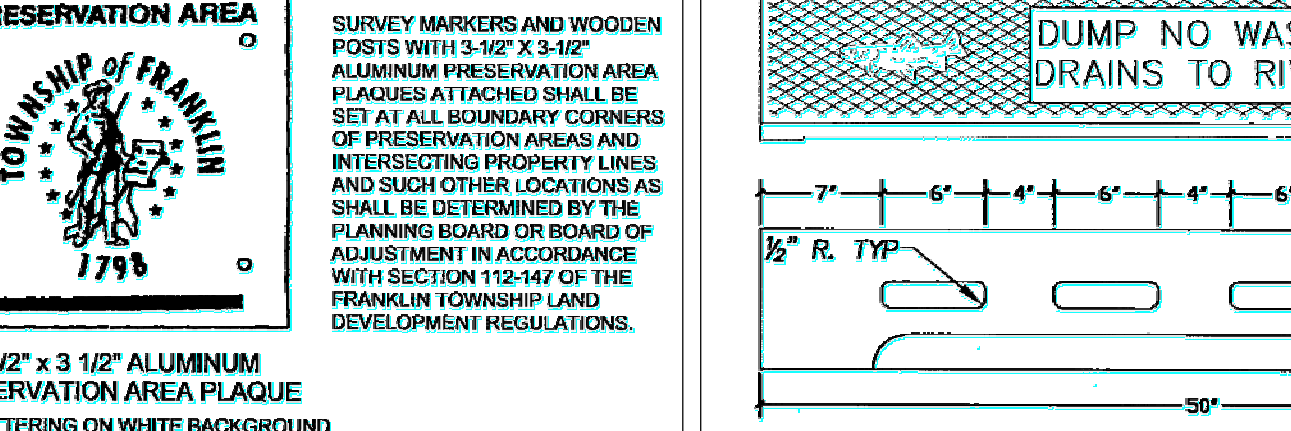
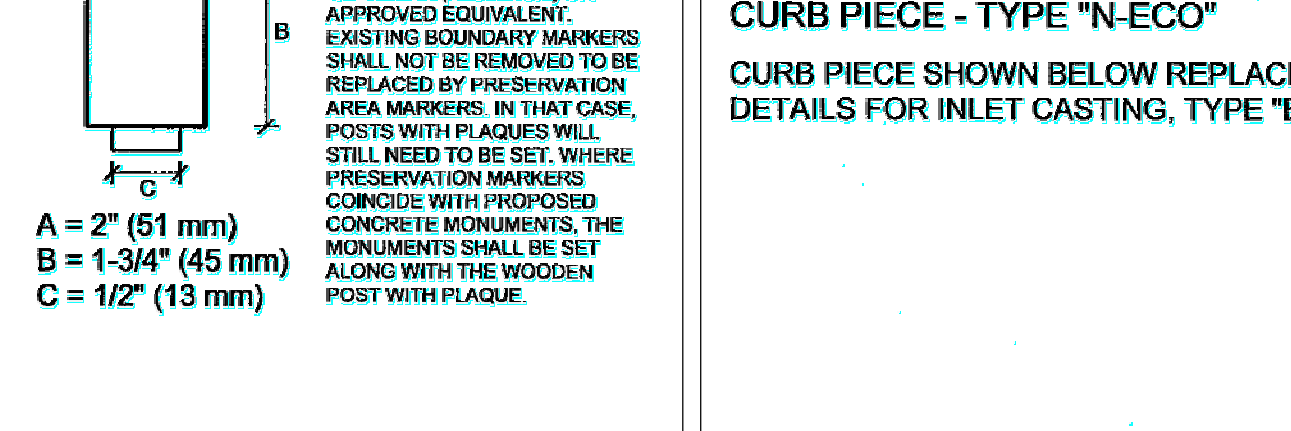
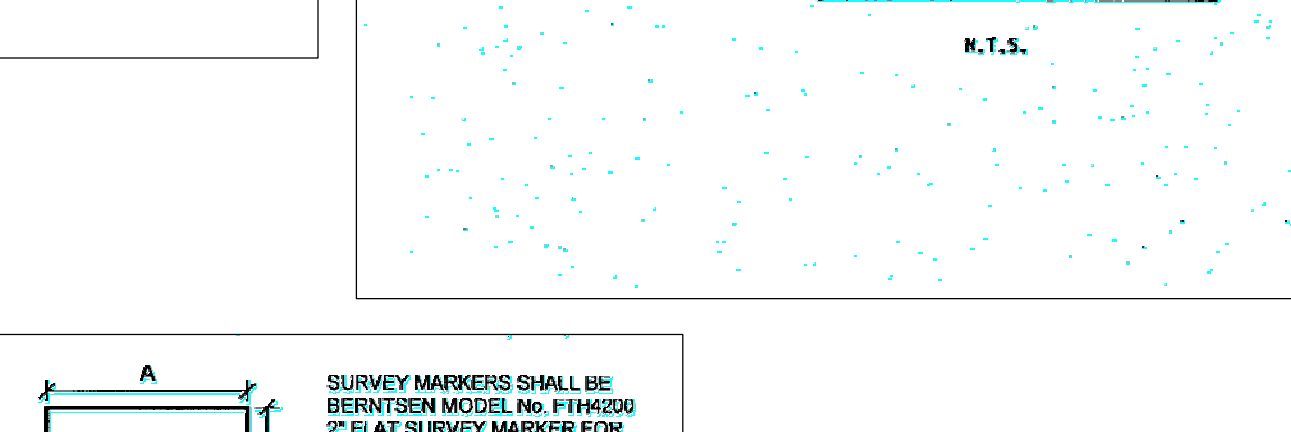
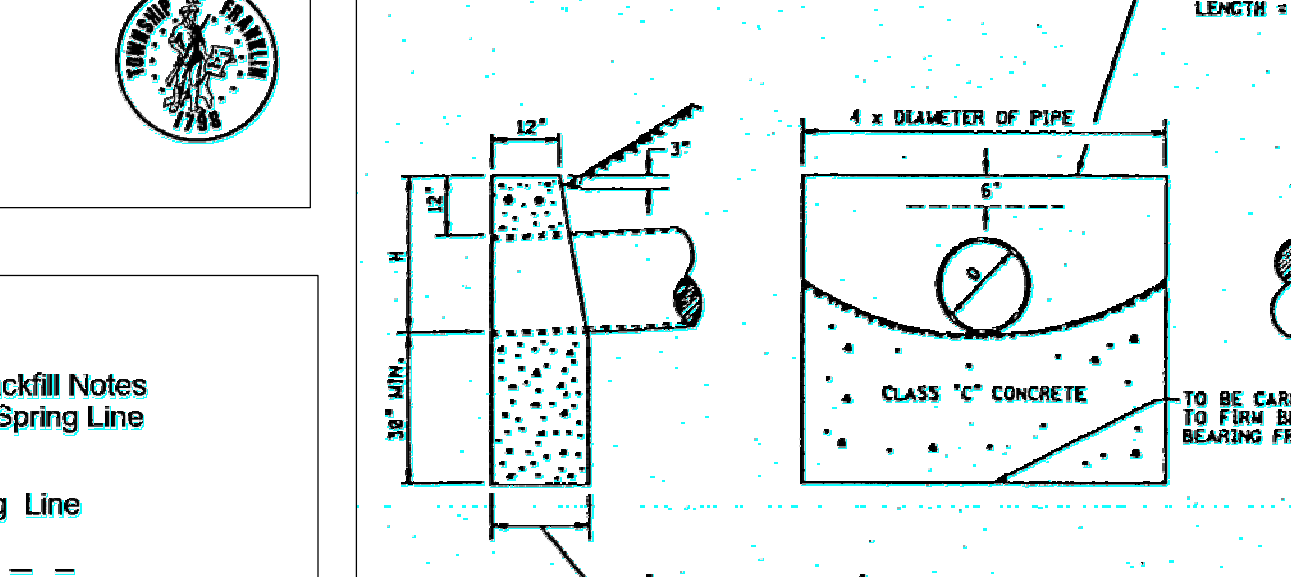
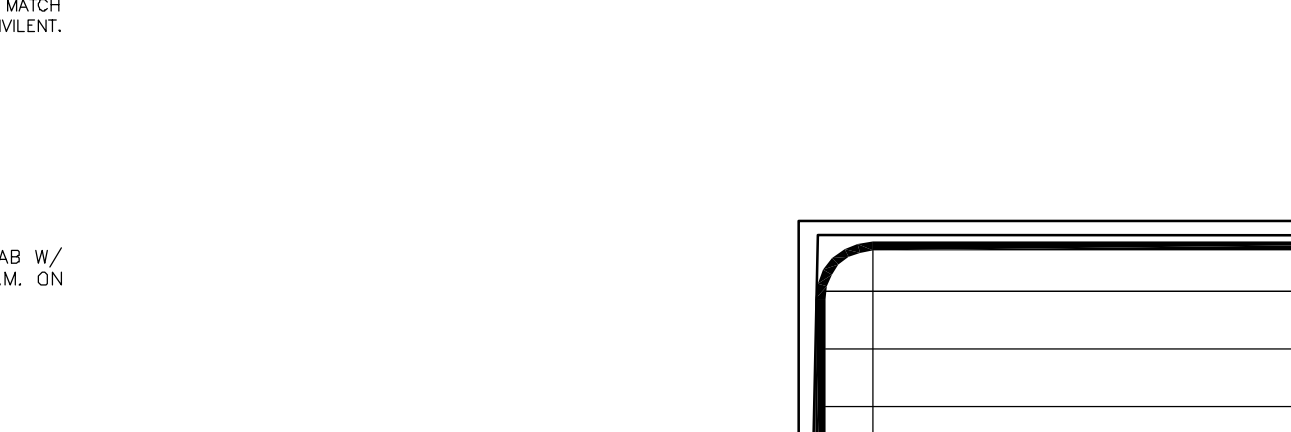
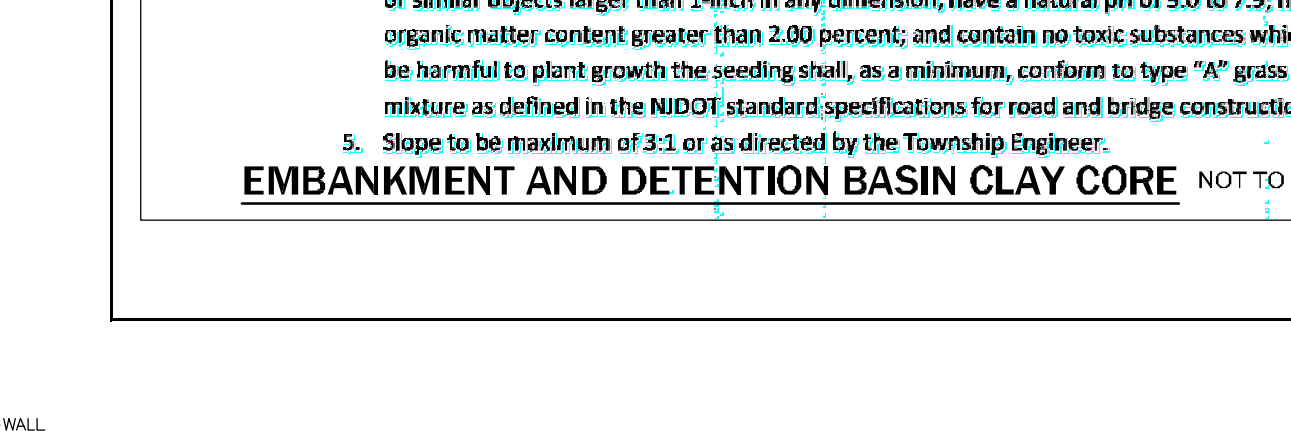
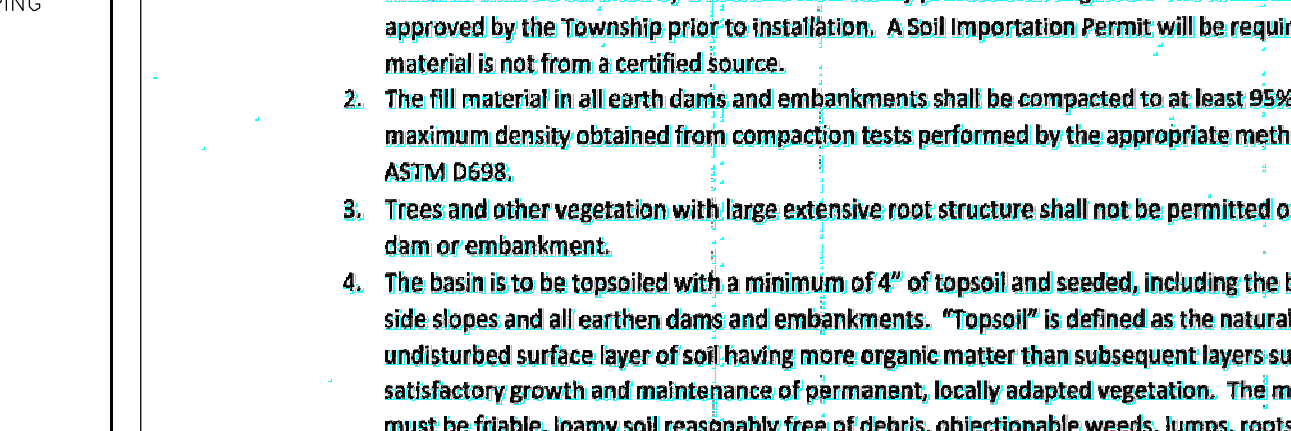
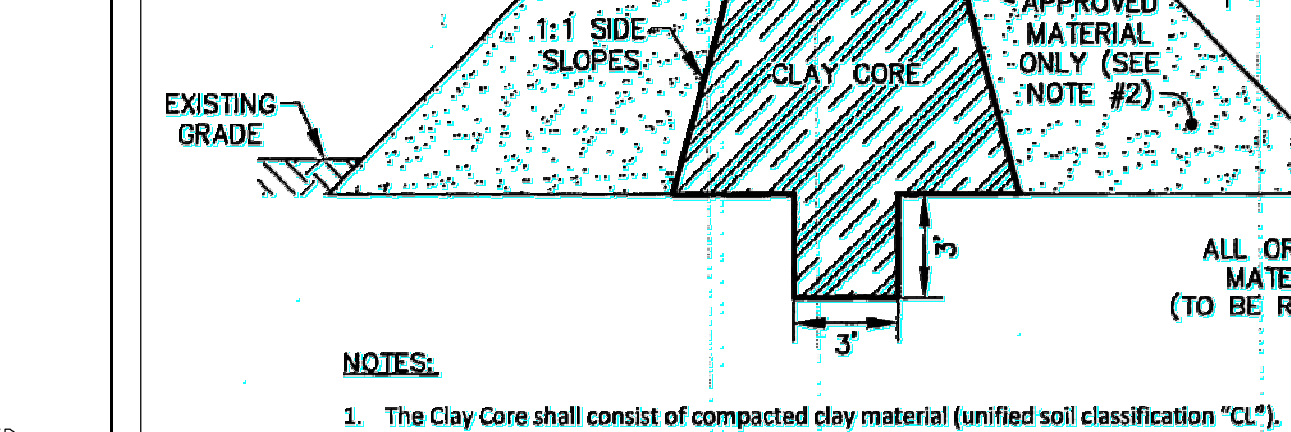
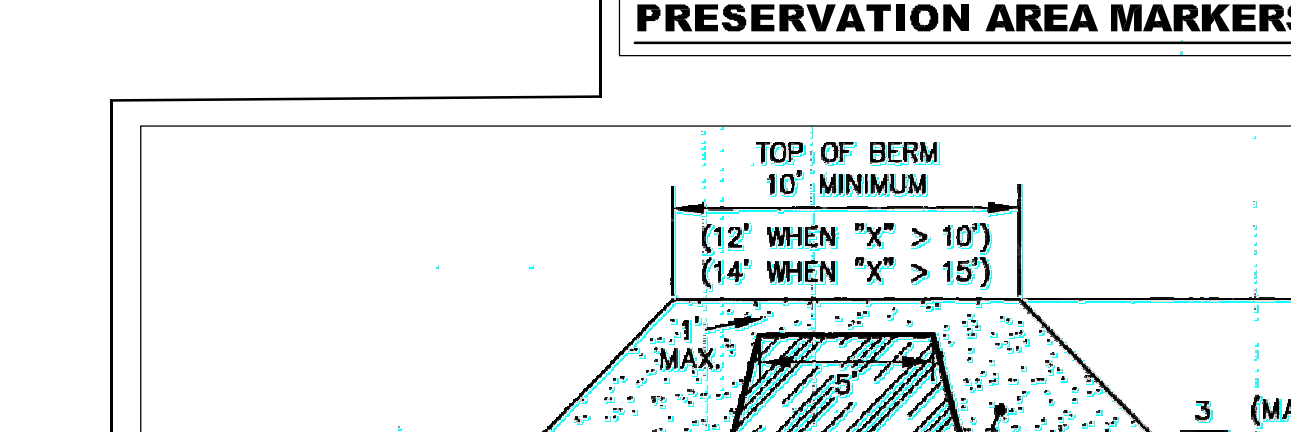
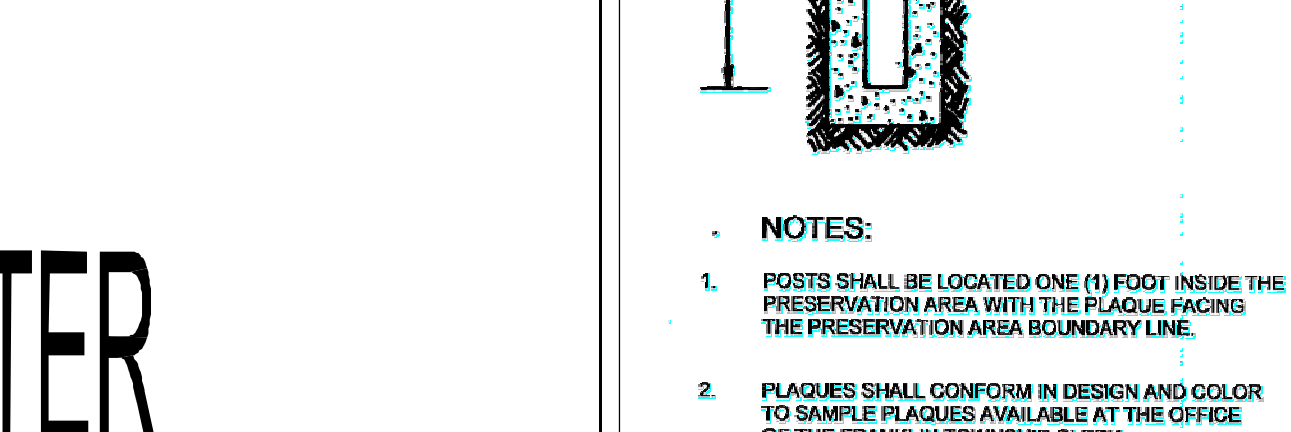
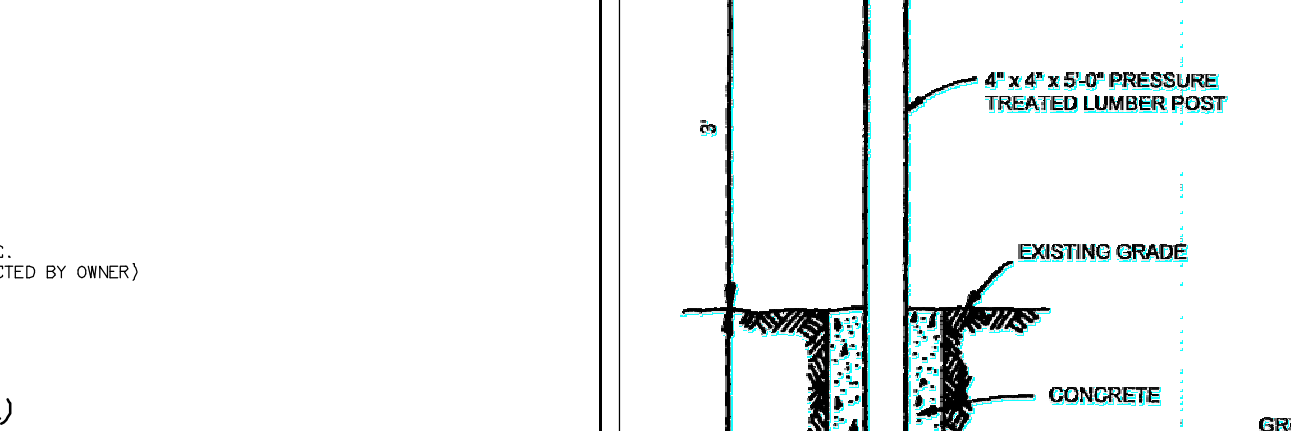
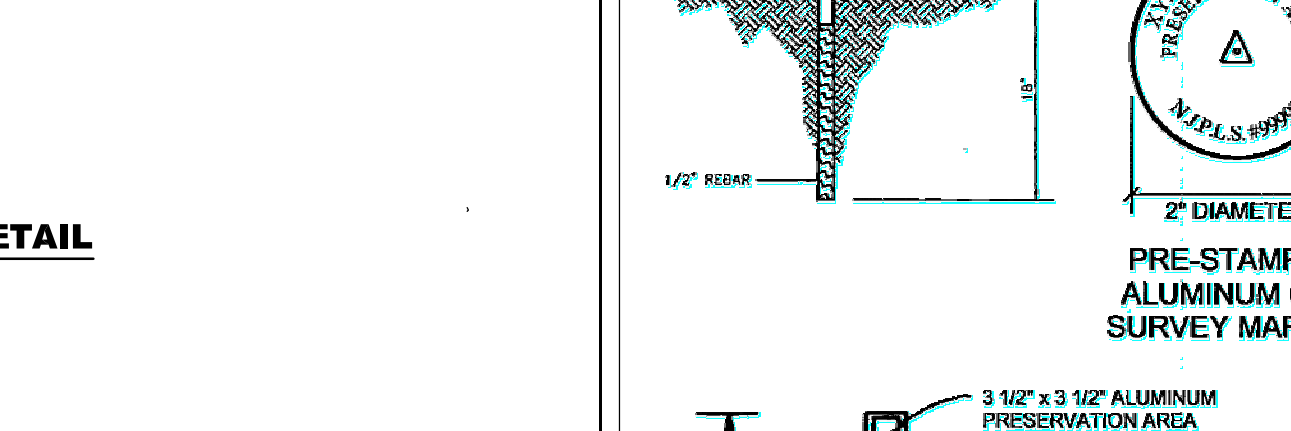
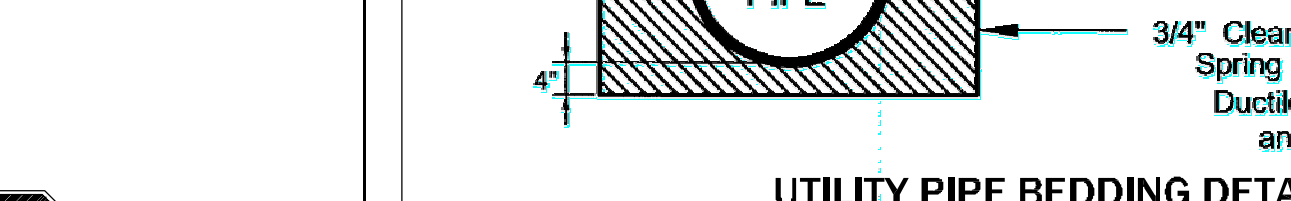
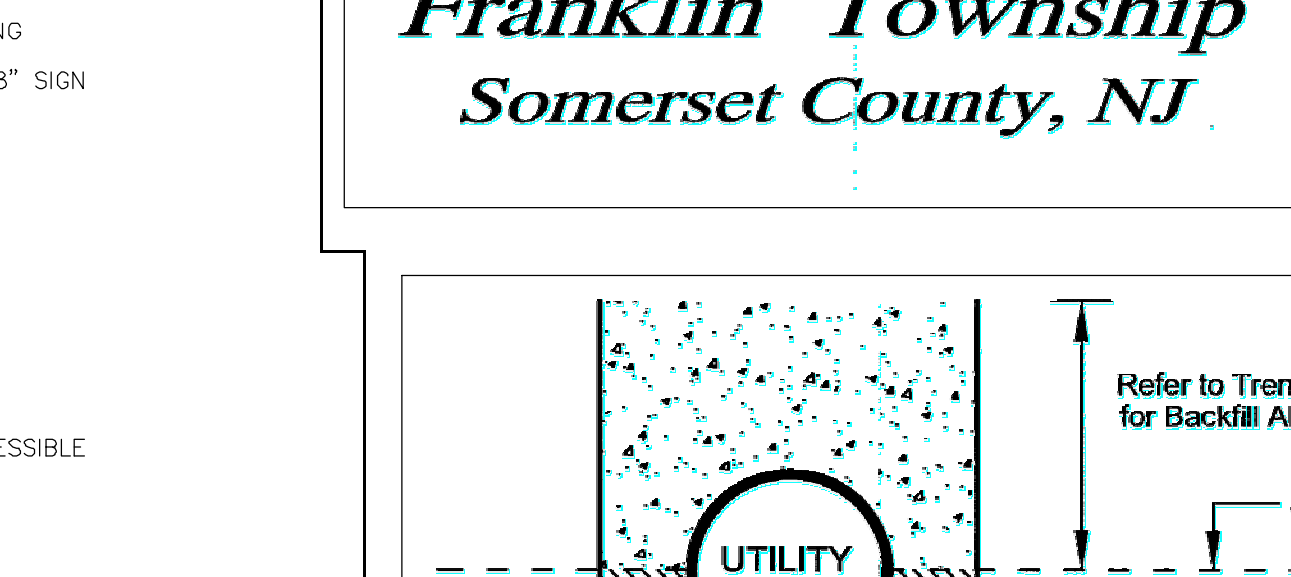
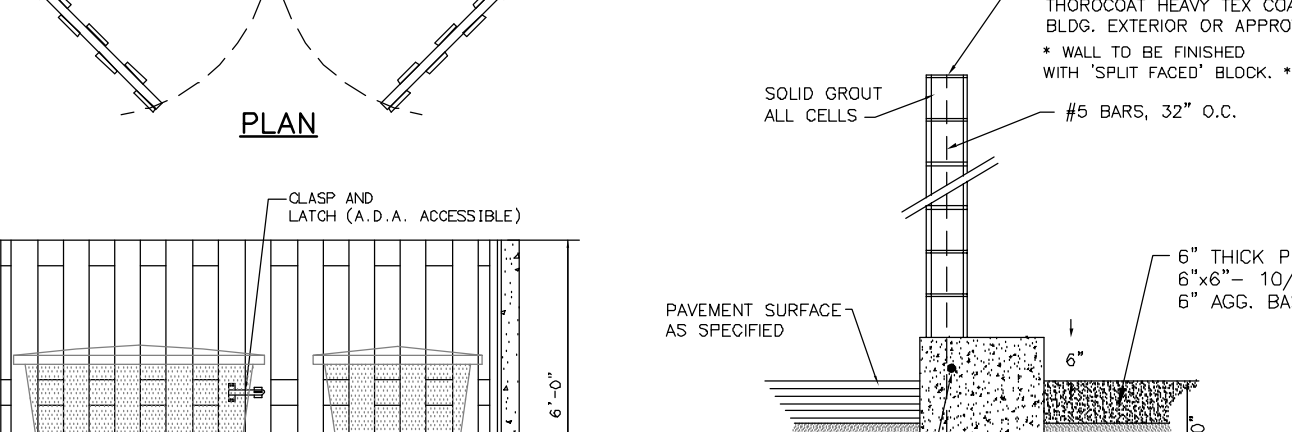
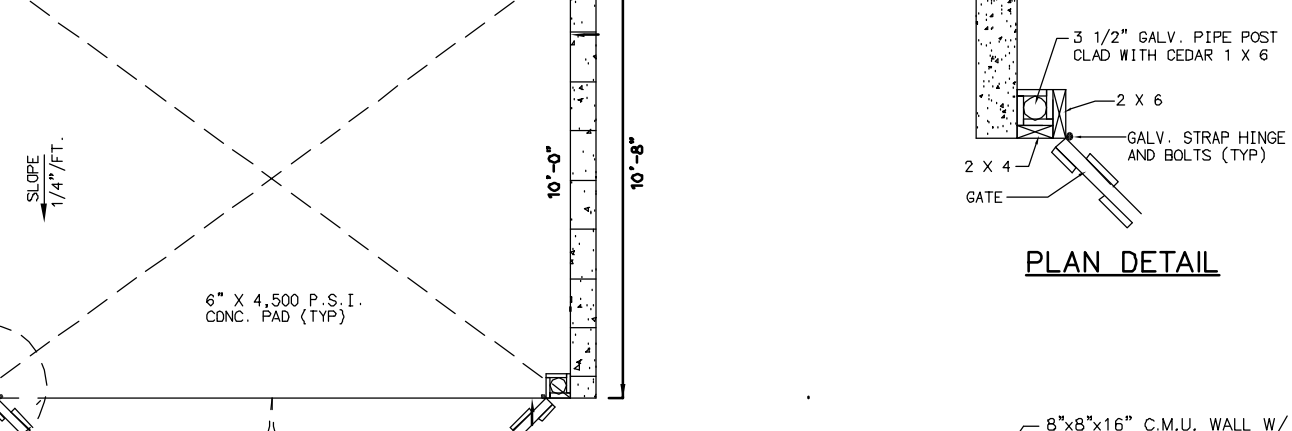
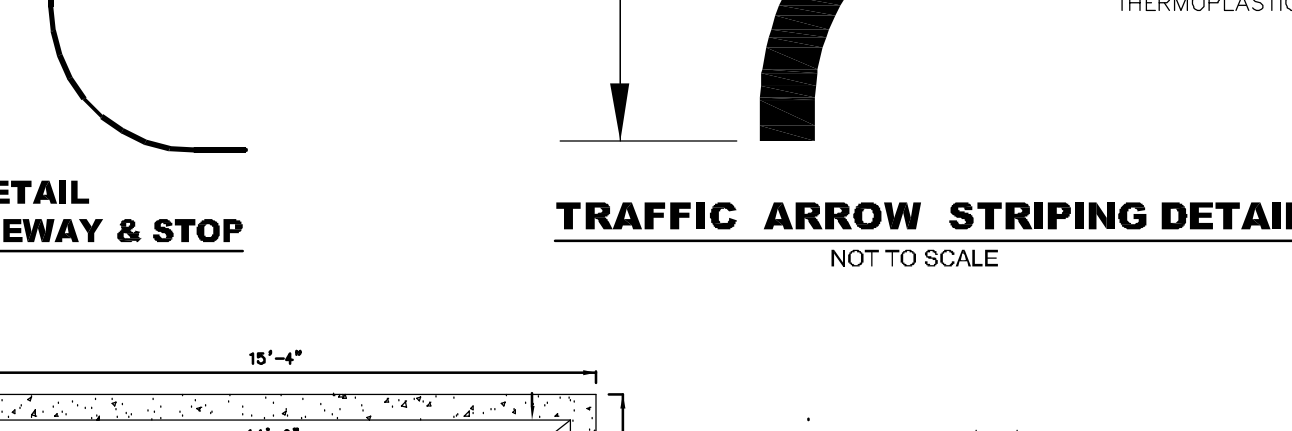
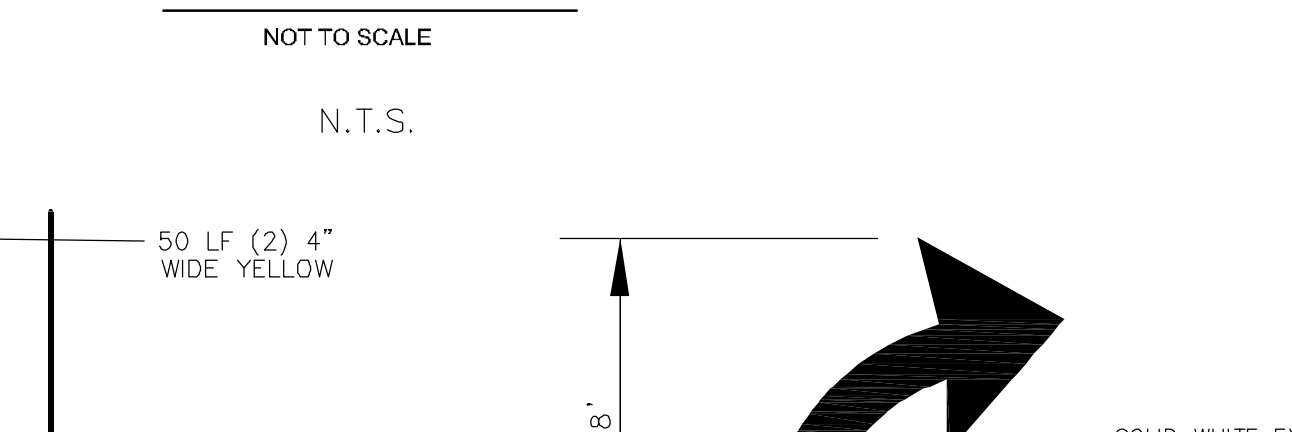
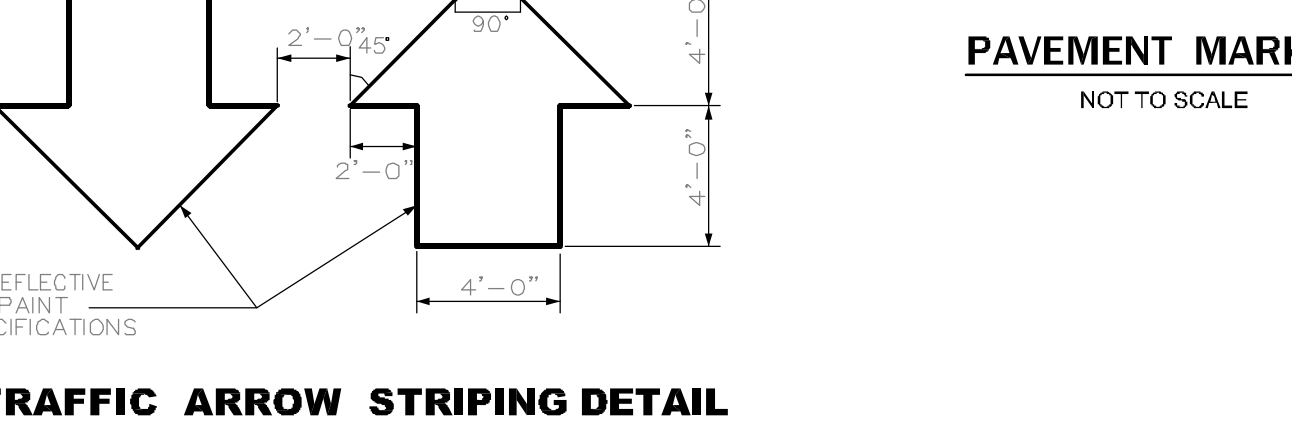
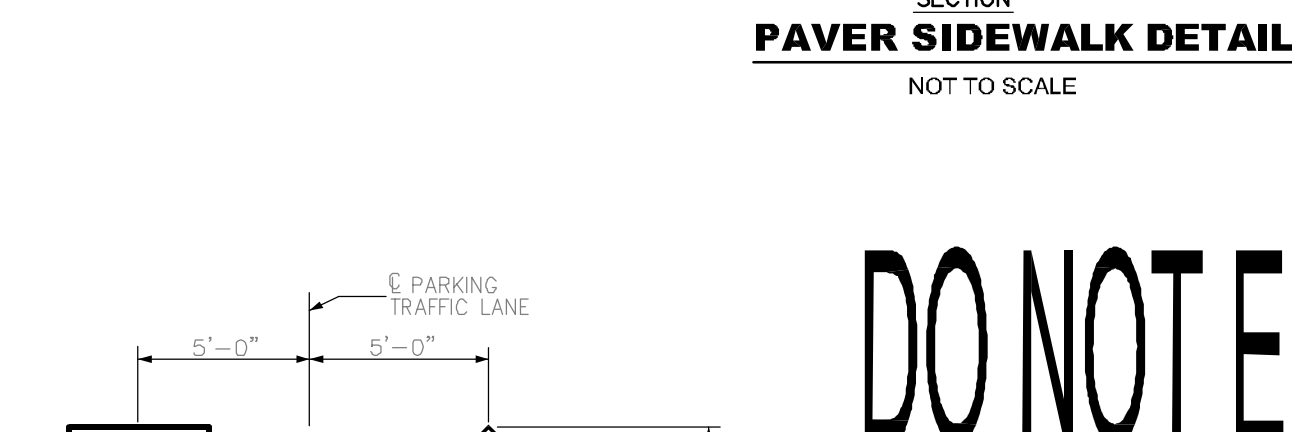
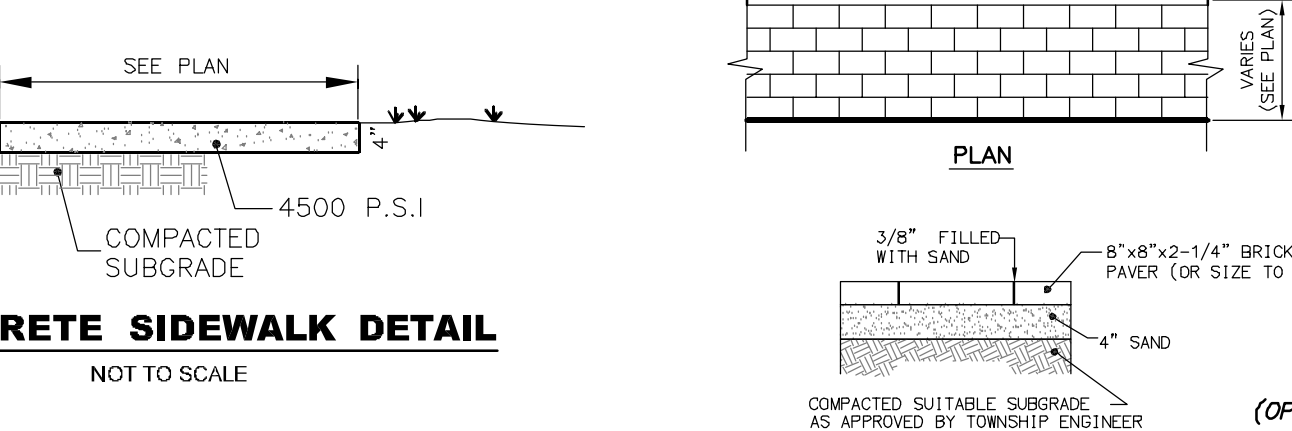
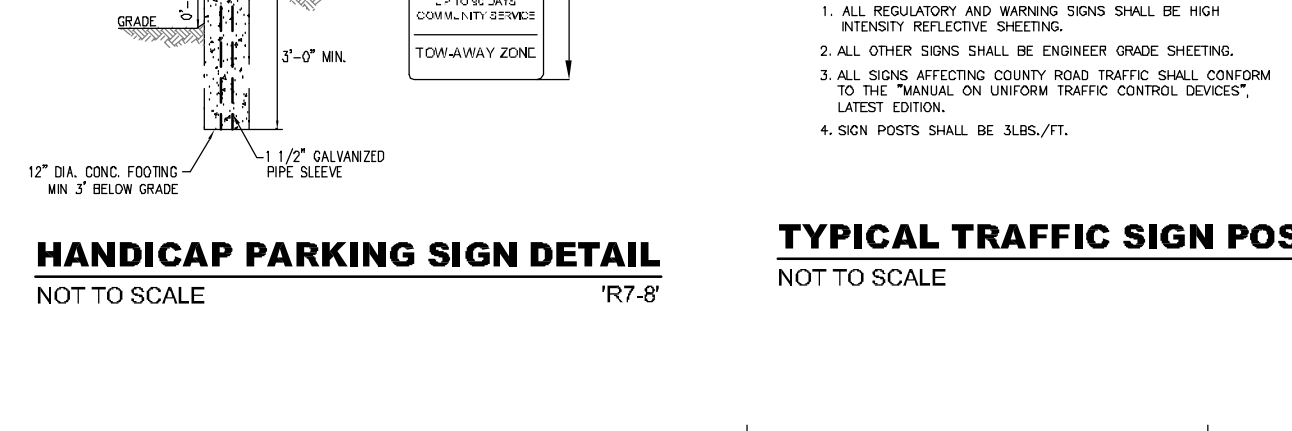
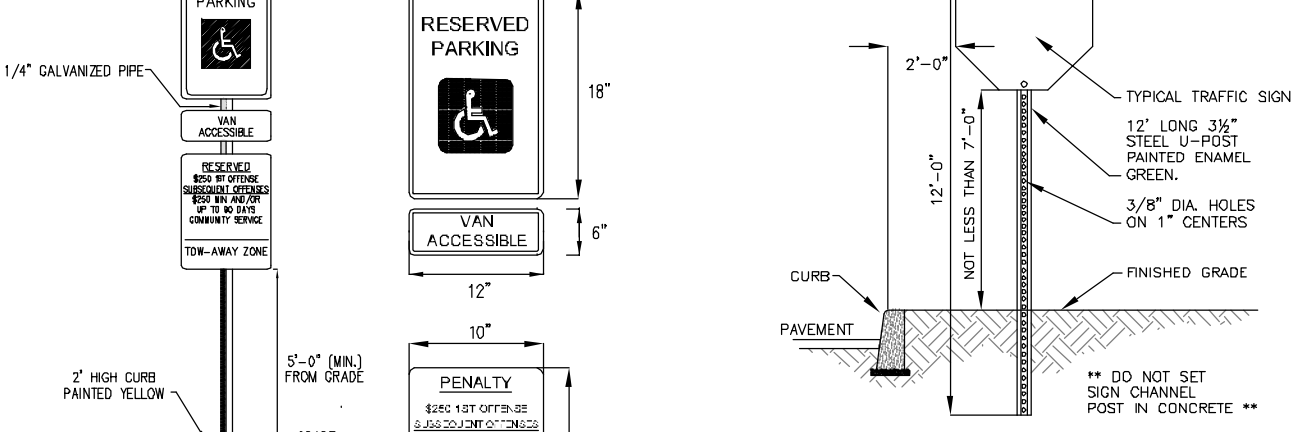
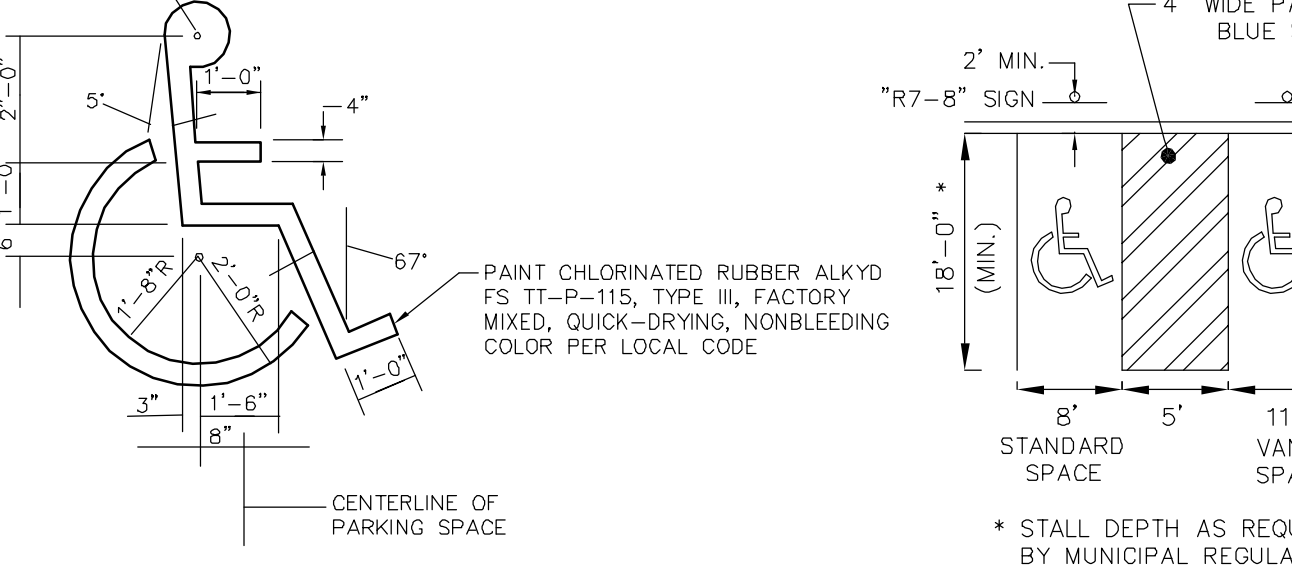
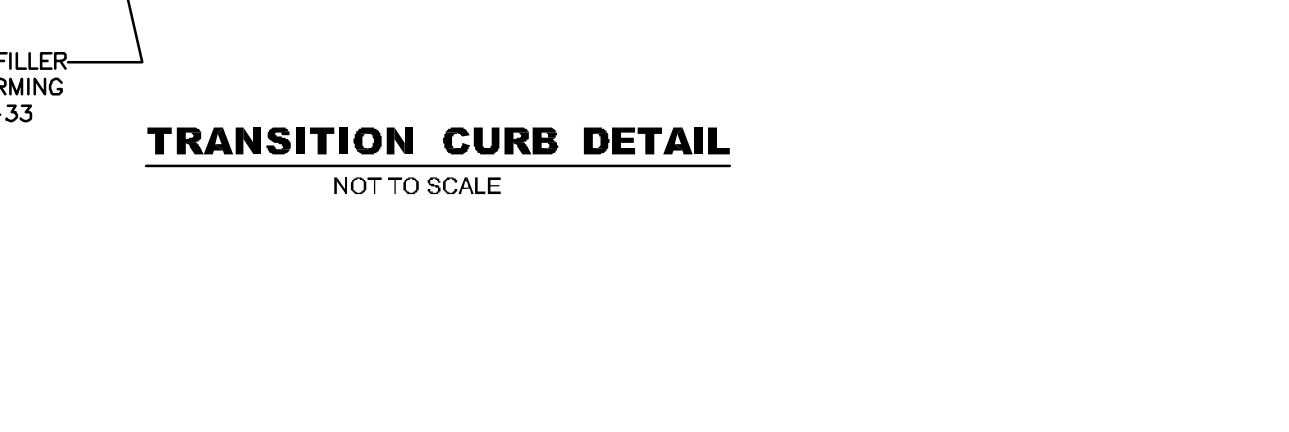
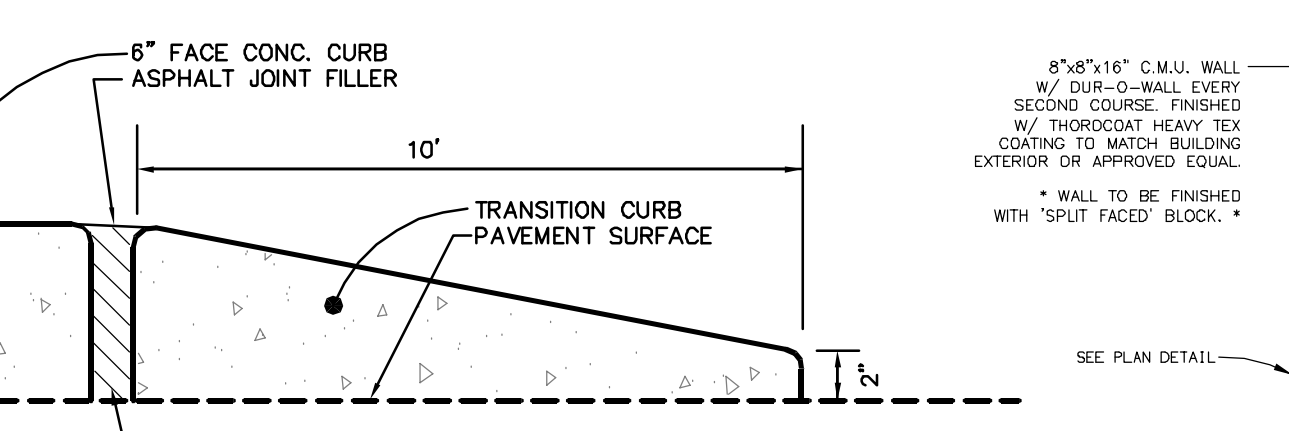
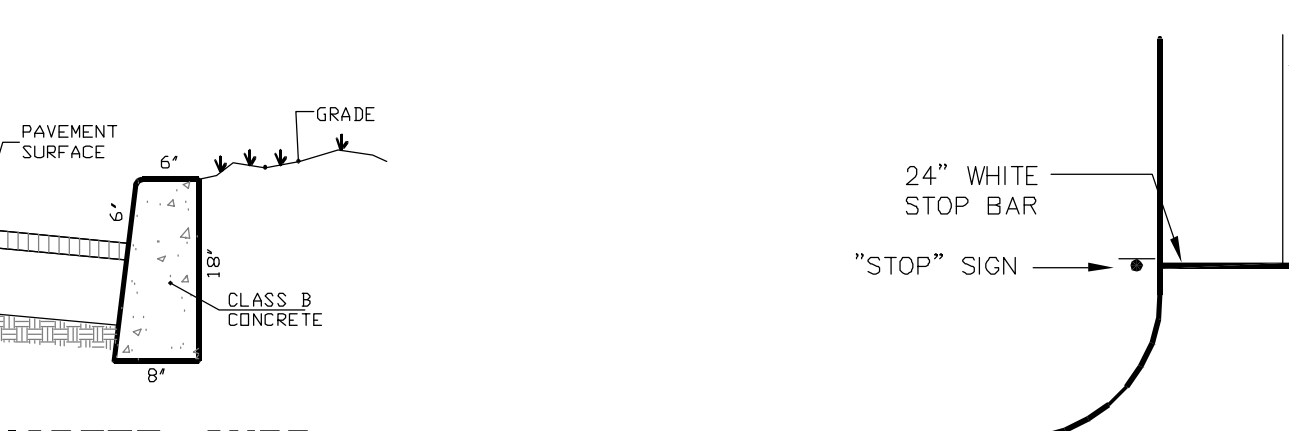
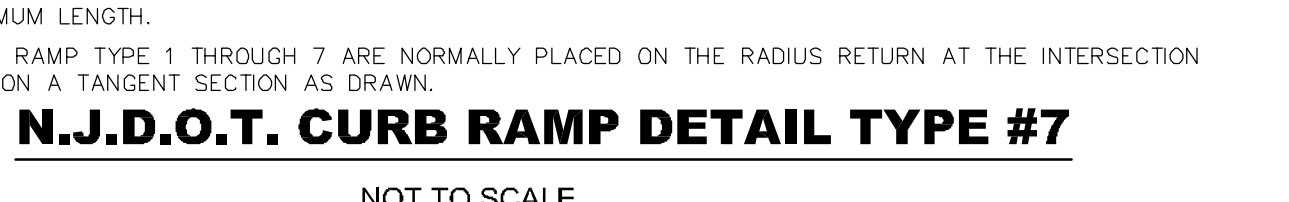
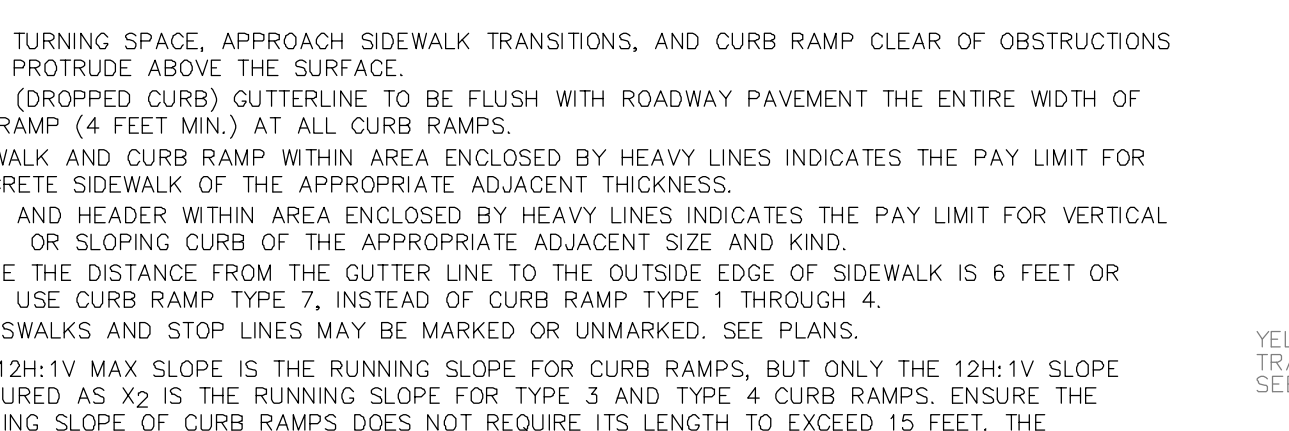
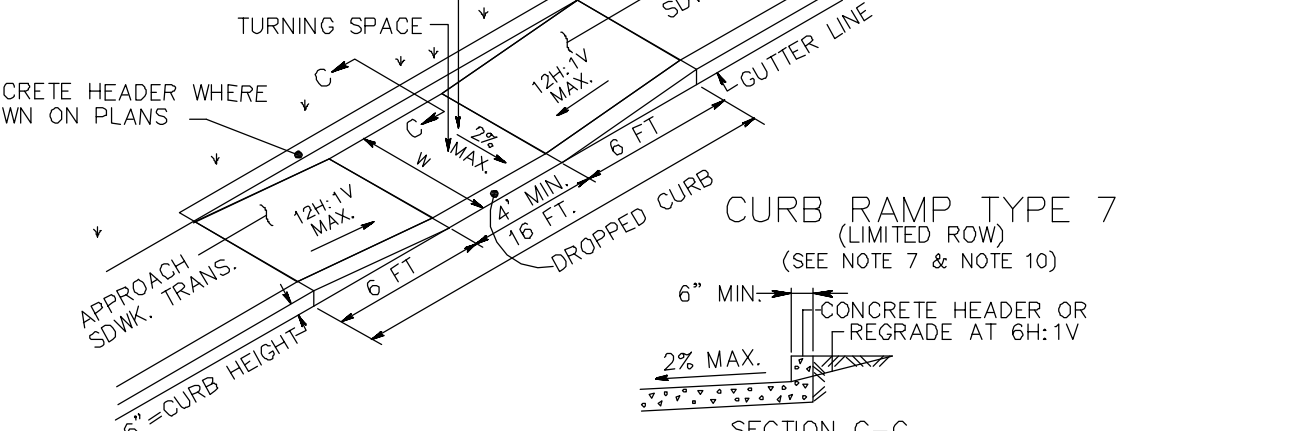
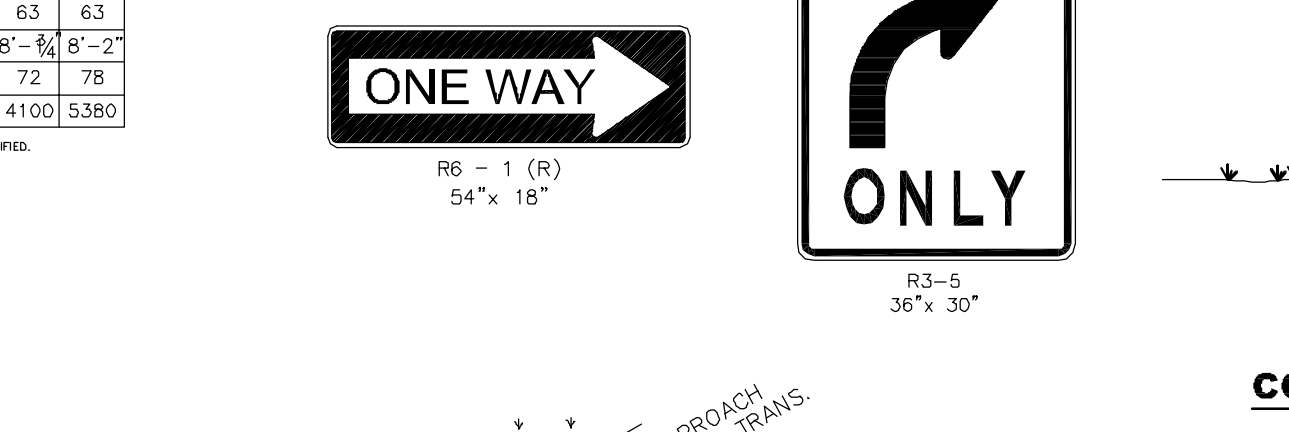
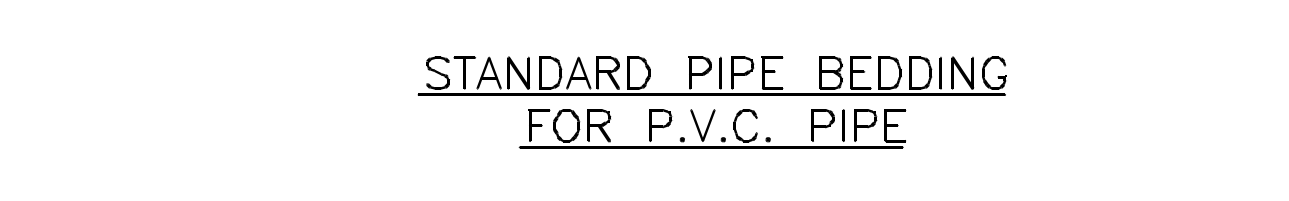
ALWAYS USE A GFCI
 ALWAYS DISCONNECT THE POWER SOURCE WHEN SWIMMERS ARE PRESENT



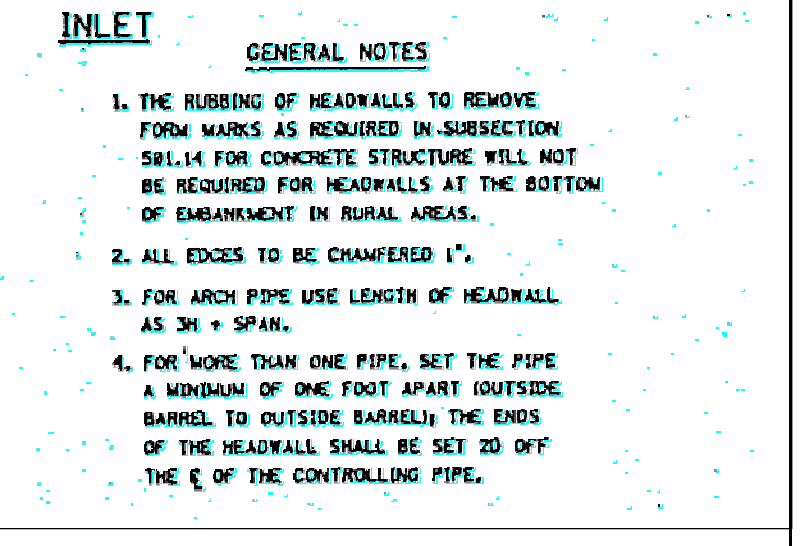
- NOTES:**
- KEEP TURNING SPACE, APPROACH SIDEWALK TRANSITIONS, AND CURB RAMP CLEAR OF OBSTRUCTIONS THAT PROTRUDE ABOVE THE SURFACE.
 - CURBS (DROPPED CURB) CUTTERLINE TO BE FLUSH WITH ROADWAY PAVEMENT THE ENTIRE WIDTH OF THE RAMP (4 FEET MIN.) AT ALL CURB RAMPS.
 - SIDEWALK AND CURB RAMP WITHIN AREA ENCLOSED BY HEAVY LINES INDICATES THE PAY LIMIT FOR CONCRETE SIDEWALK OF THE APPROPRIATE ADJACENT THICKNESS.
 - CURB AND HEADER WITHIN AREA ENCLOSED BY HEAVY LINES INDICATES THE PAY LIMIT FOR VERTICAL CURB OR SLOPING CURB OF THE APPROPRIATE ADJACENT SIZE AND KIND.
 - WHERE THE DISTANCE FROM THE CUTTER LINE TO THE OUTSIDE EDGE OF SIDEWALK IS 6 FEET OR LESS, USE CURB RAMP TYPE 7, INSTEAD OF CURB RAMP TYPE 1 THROUGH 4.
 - CROSSWALKS AND STOP LINES MAY BE MARKED OR UNMARKED. SEE PLANS.
 - THE 12H:1V MAX SLOPE IS THE RUNNING SLOPE FOR CURB RAMPS, BUT ONLY THE 12H:1V SLOPE MEASURED AS TO IS THE RUNNING SLOPE FOR TYPE 3 AND TYPE 4 CURB RAMPS. ENSURE THE RUNNING SLOPE OF CURB RAMPS DOES NOT REQUIRE ITS LENGTH TO EXCEED 15 FEET. THE RUNNING SLOPE MAY EXCEED THE 12H:1V MAX SLOPE SO AS NOT TO EXCEED THE 15 FEET MAXIMUM LENGTH.
 - CURB RAMP TYPE 1 THROUGH 7 ARE NORMALLY PLACED ON THE RADIUS RETURN AT THE INTERSECTION AND ON A TANGENT SECTION AS DRAWN.



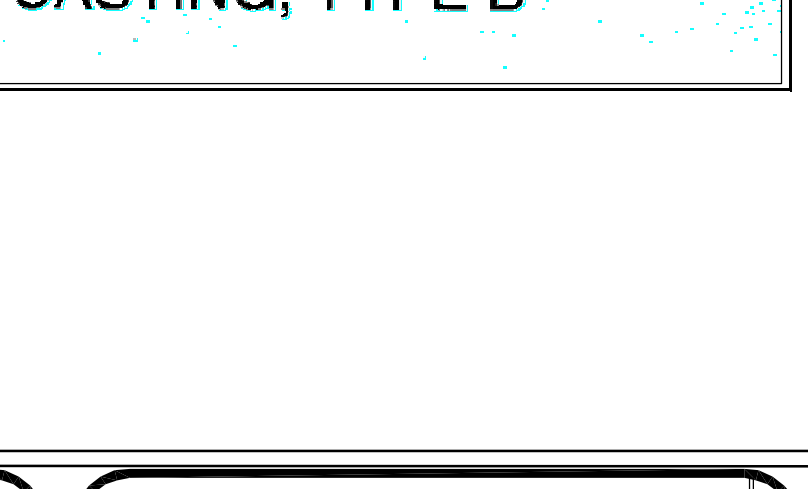
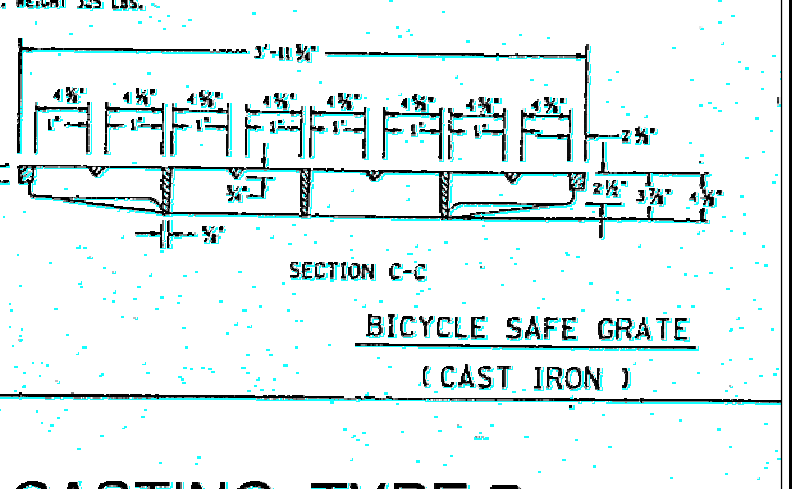
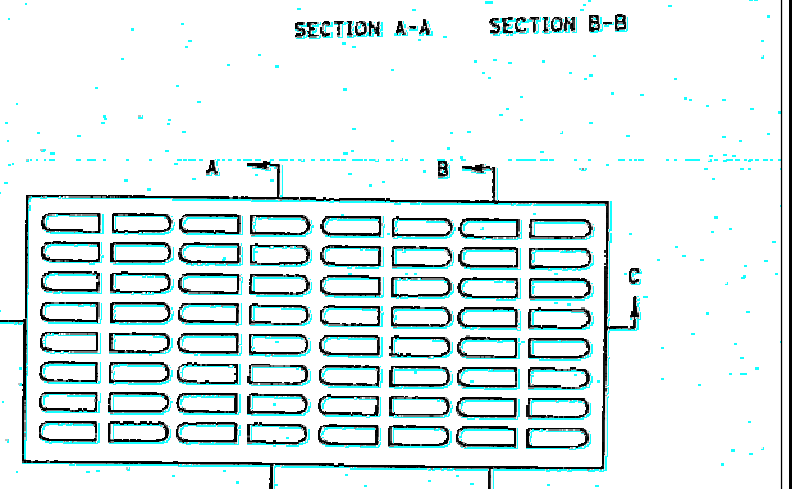
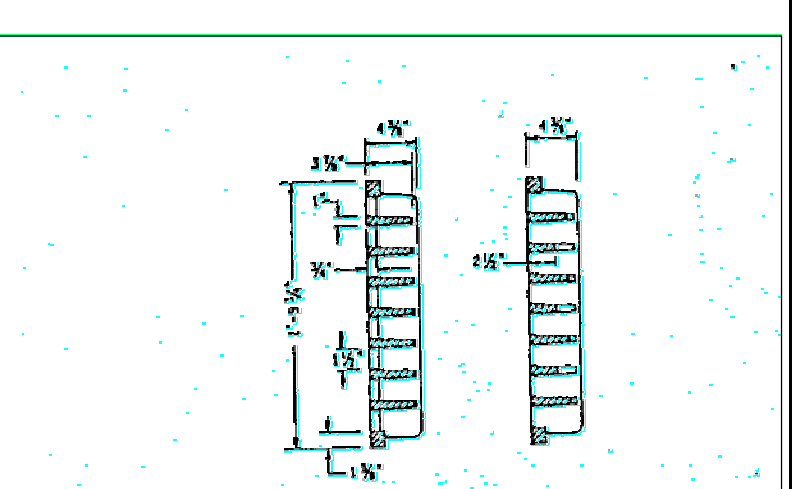
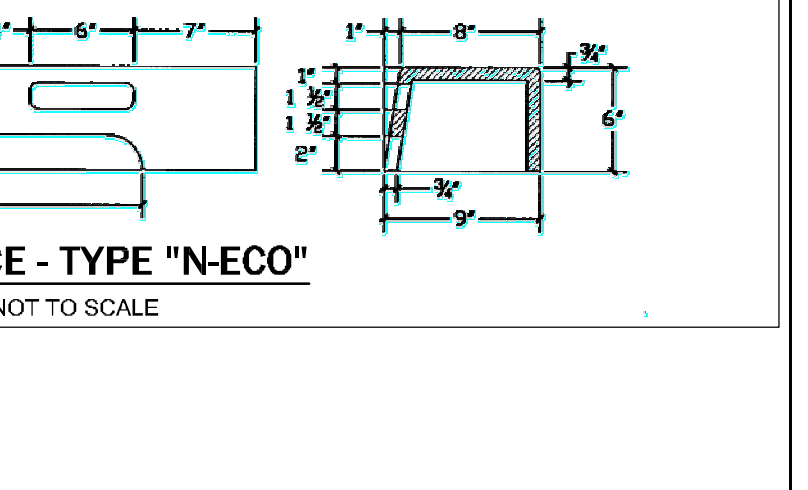
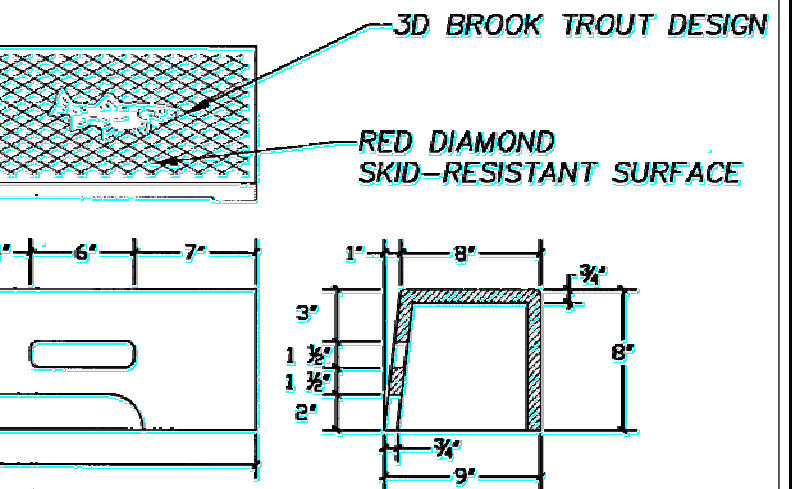
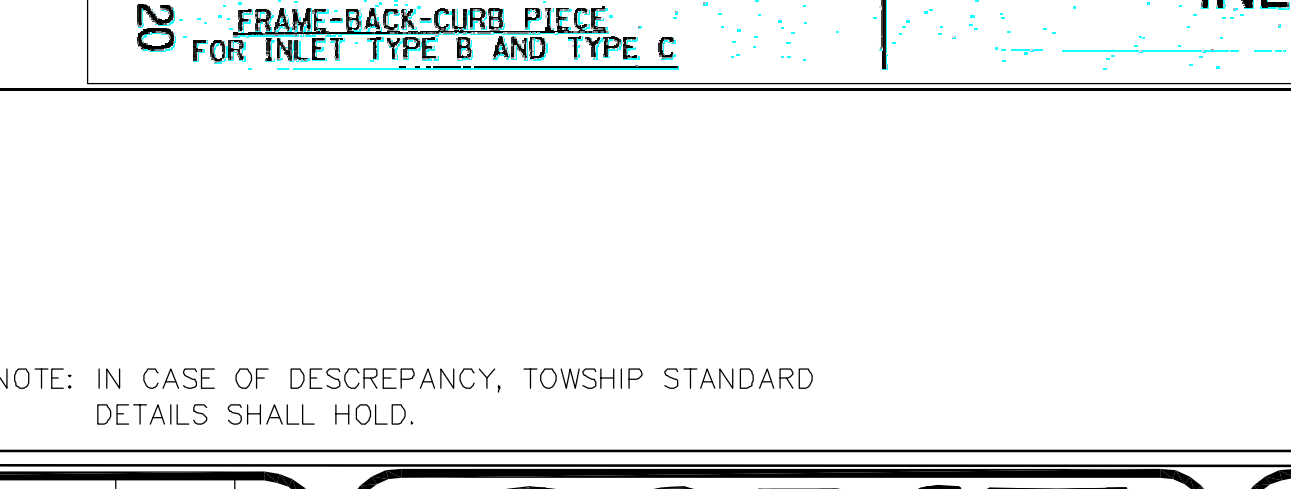
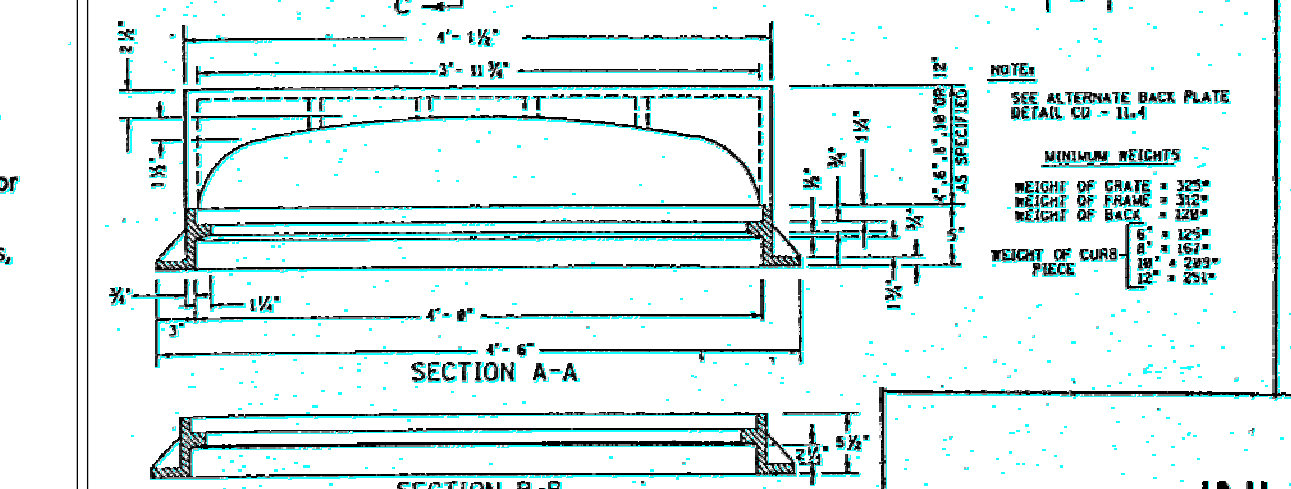
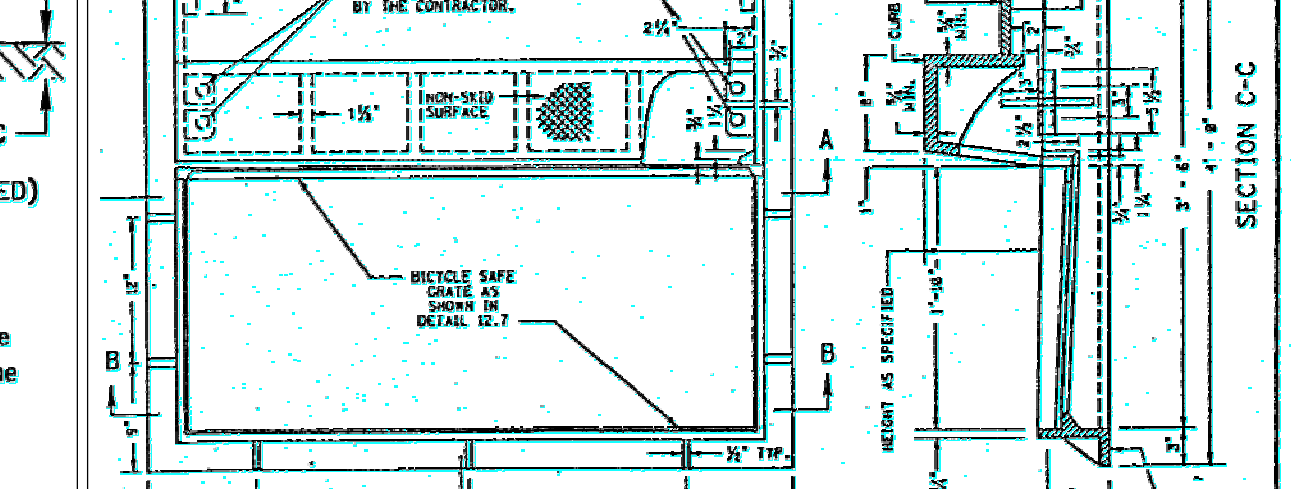
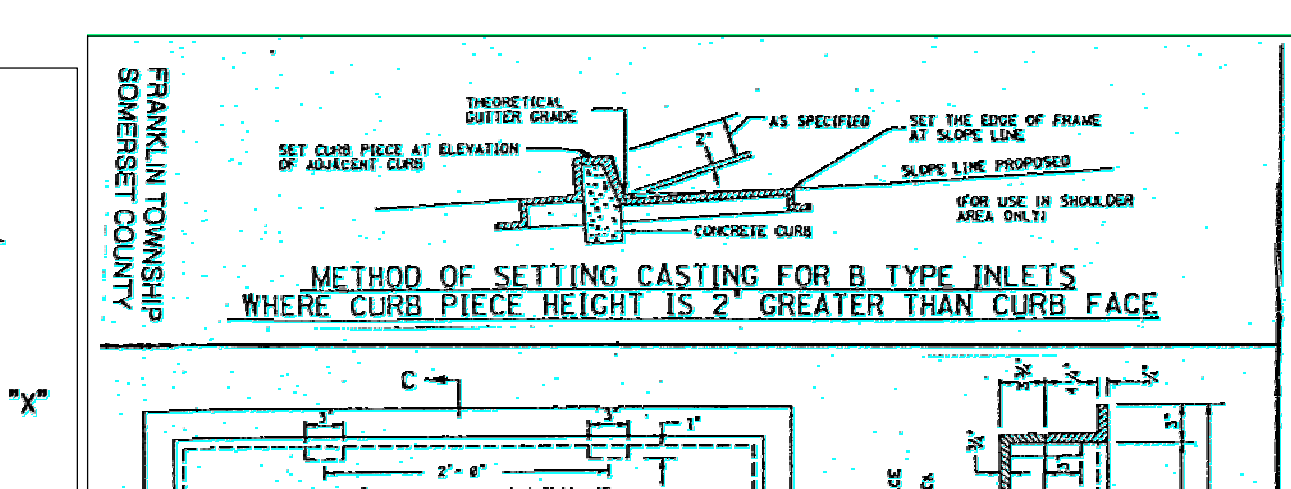
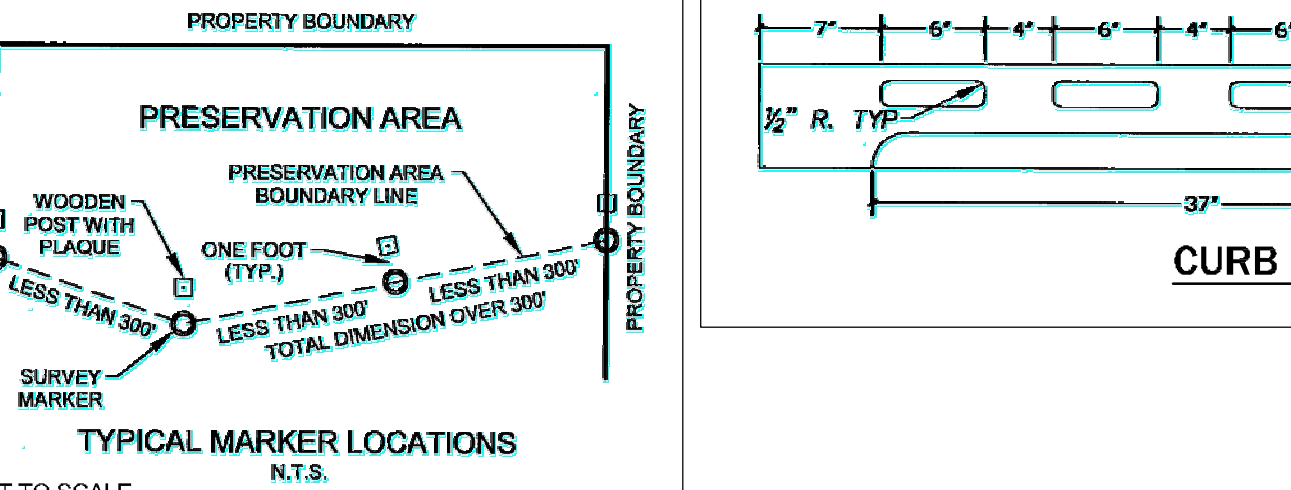
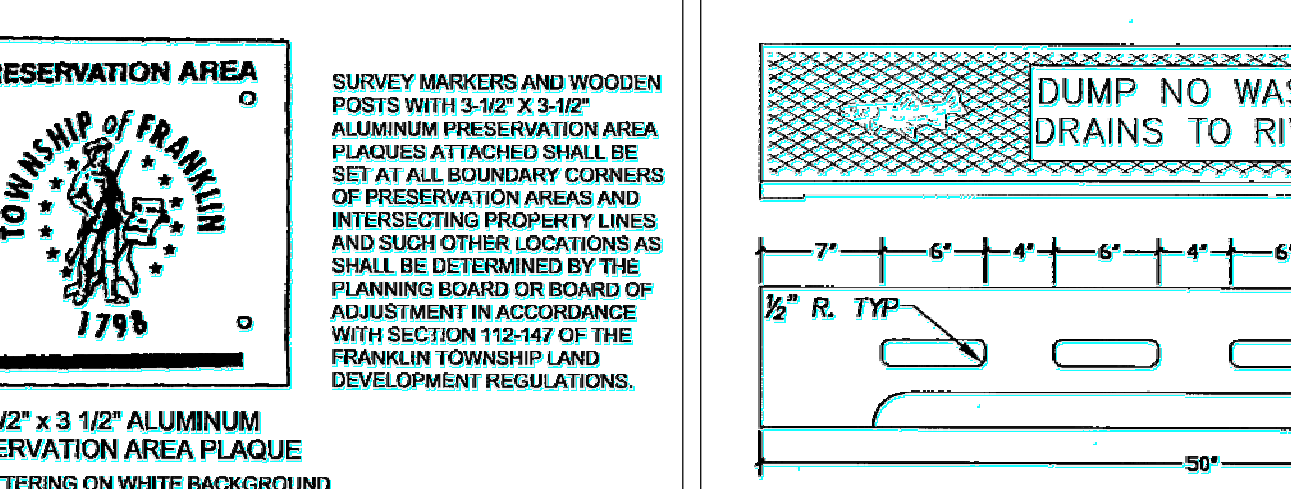
- NOTES:**
- HAUNCH & BEDDING 3/4" CLEAN CRUSHED STONE OR GRAVEL
 - HYDROHAMMERS ARE NOT TO BE USED 3" OR LESS FROM TOP OF PIPE.



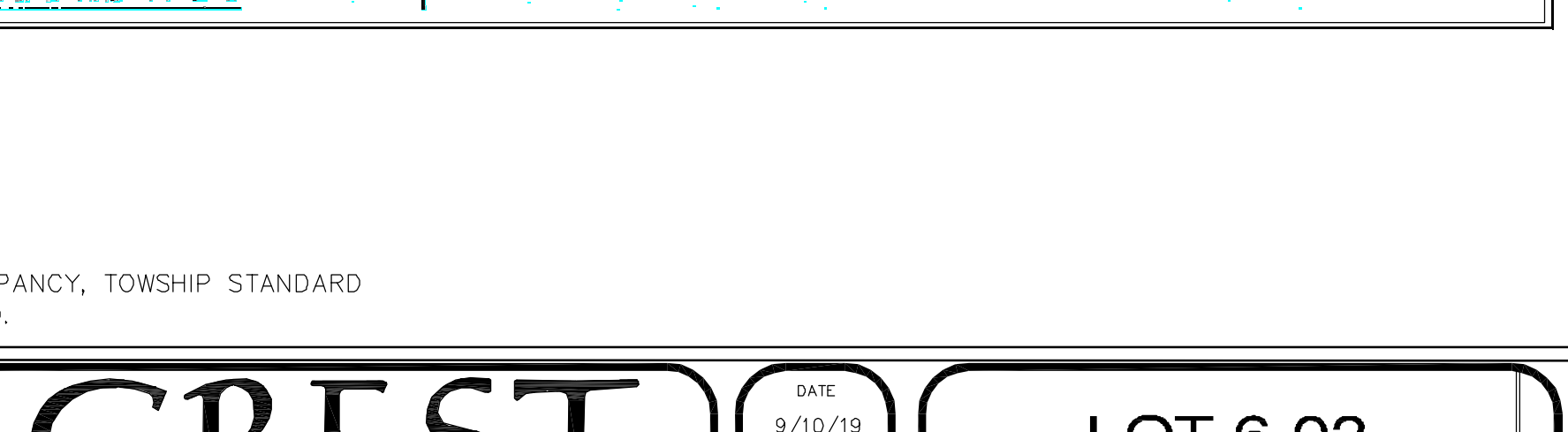
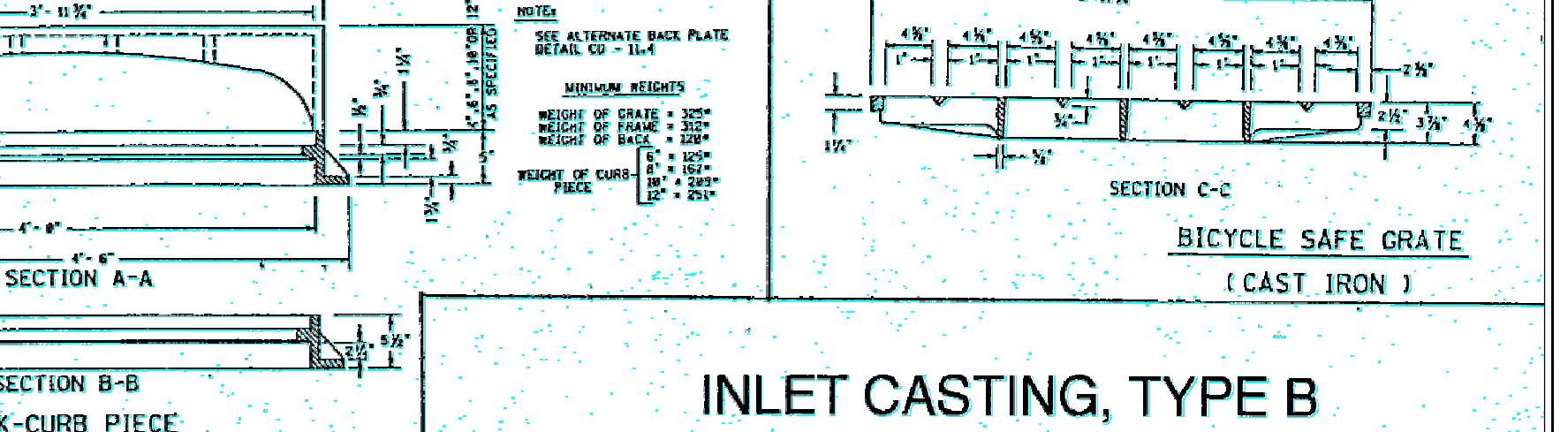
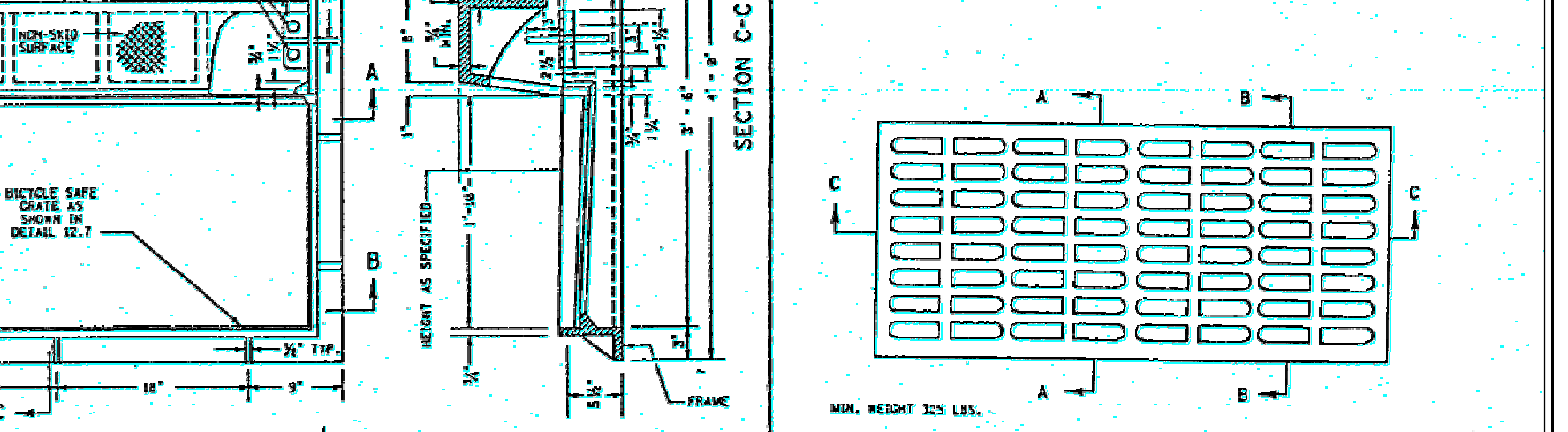
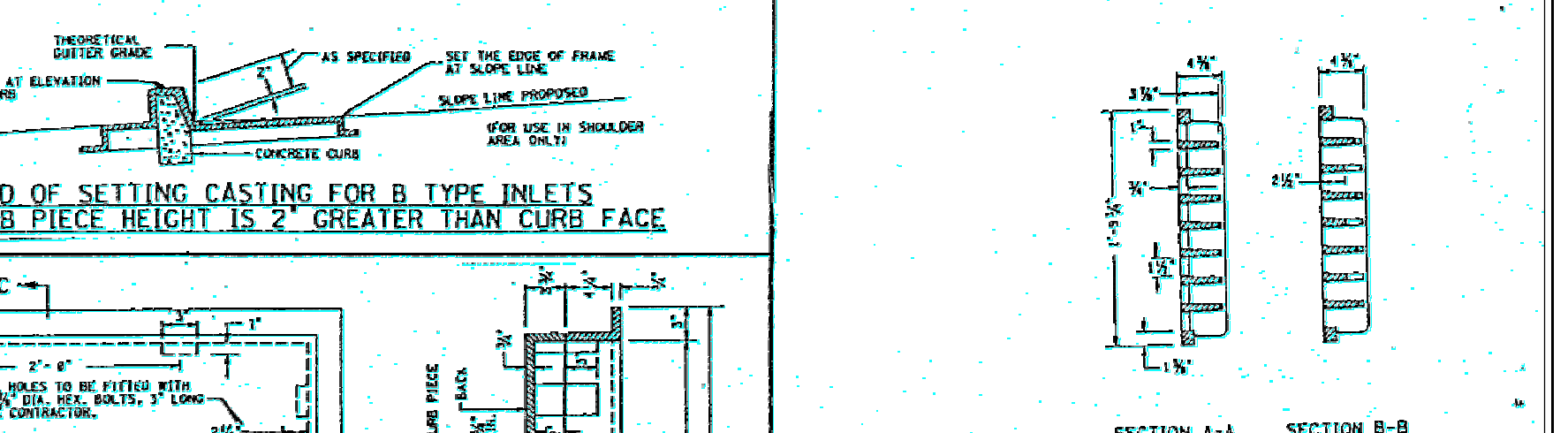
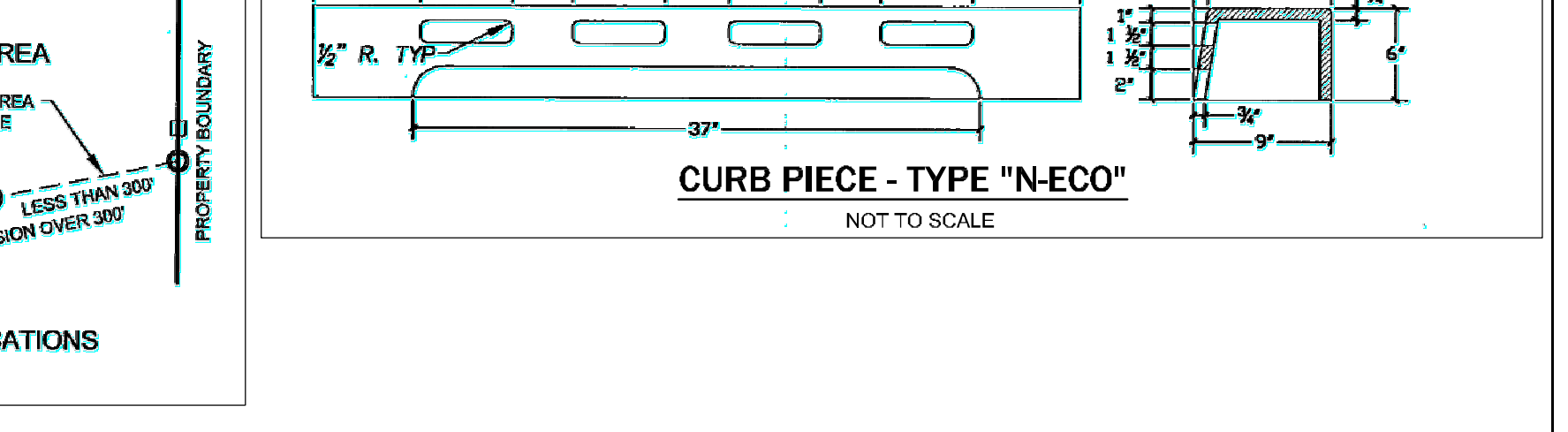
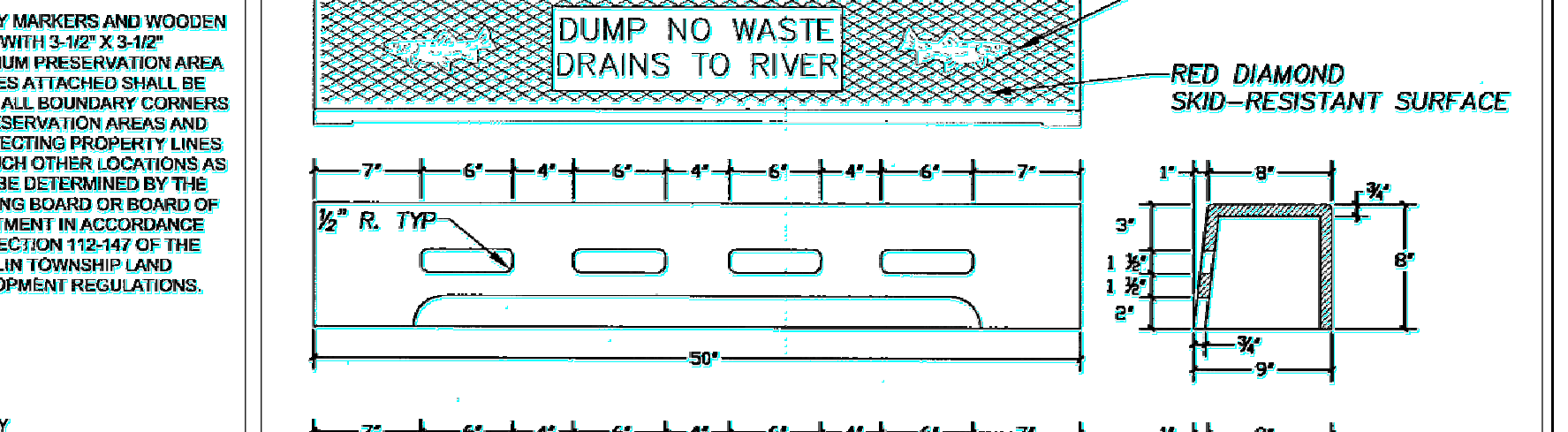
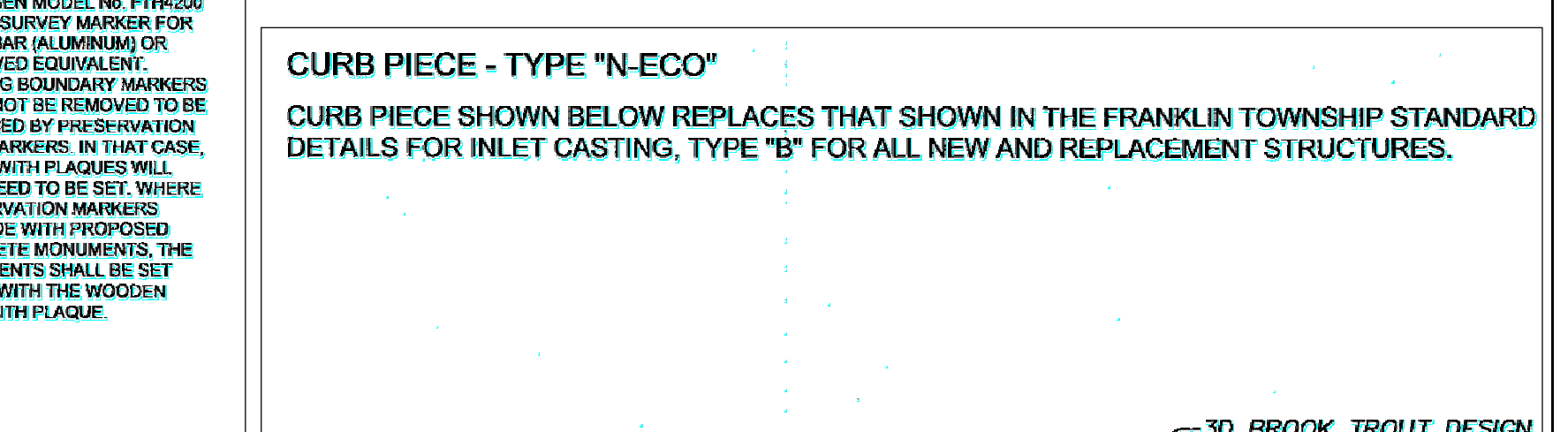
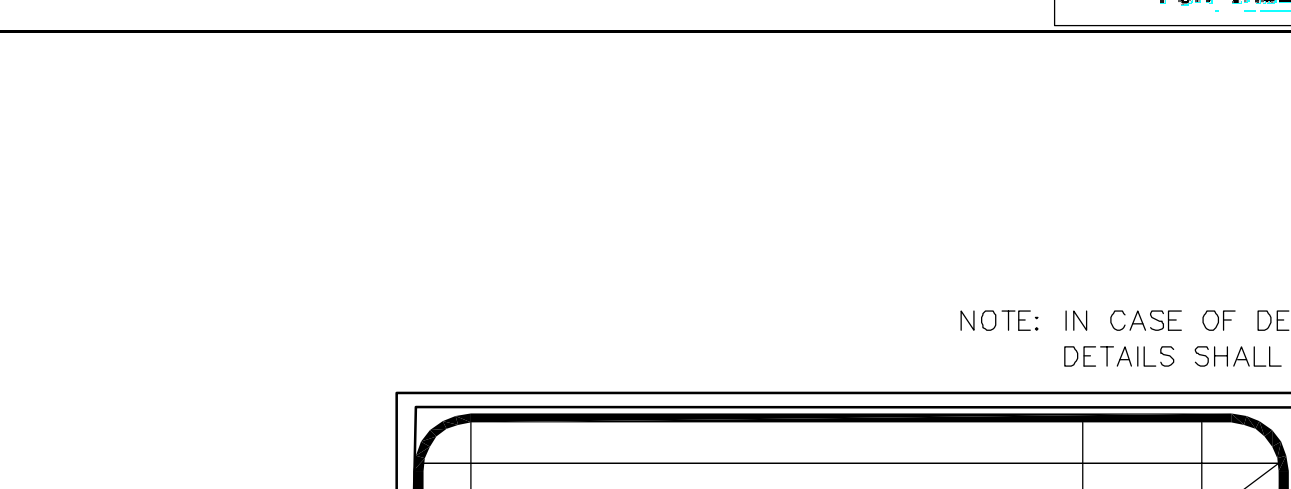
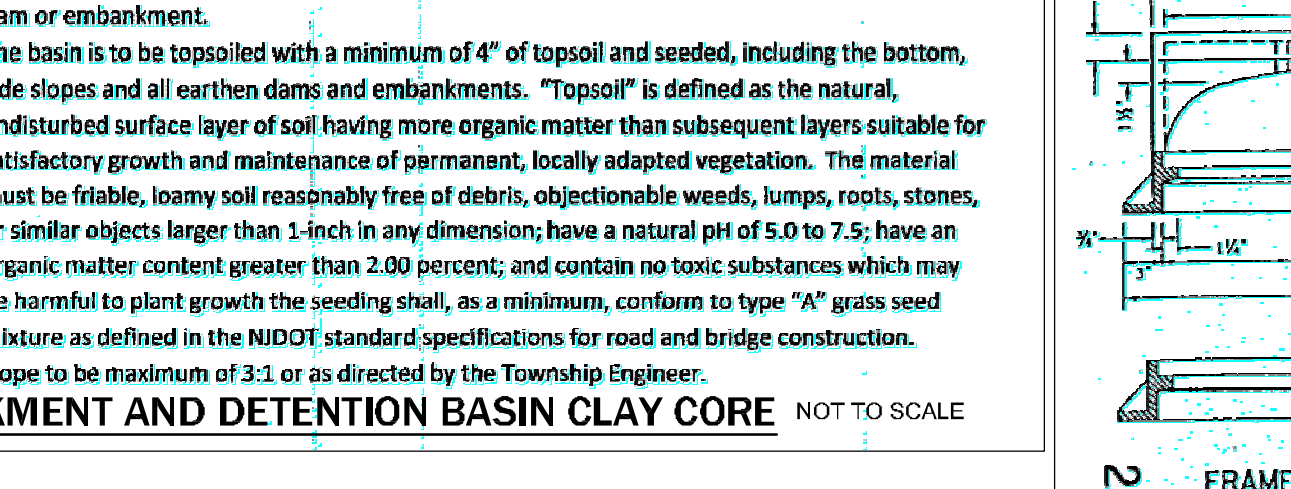
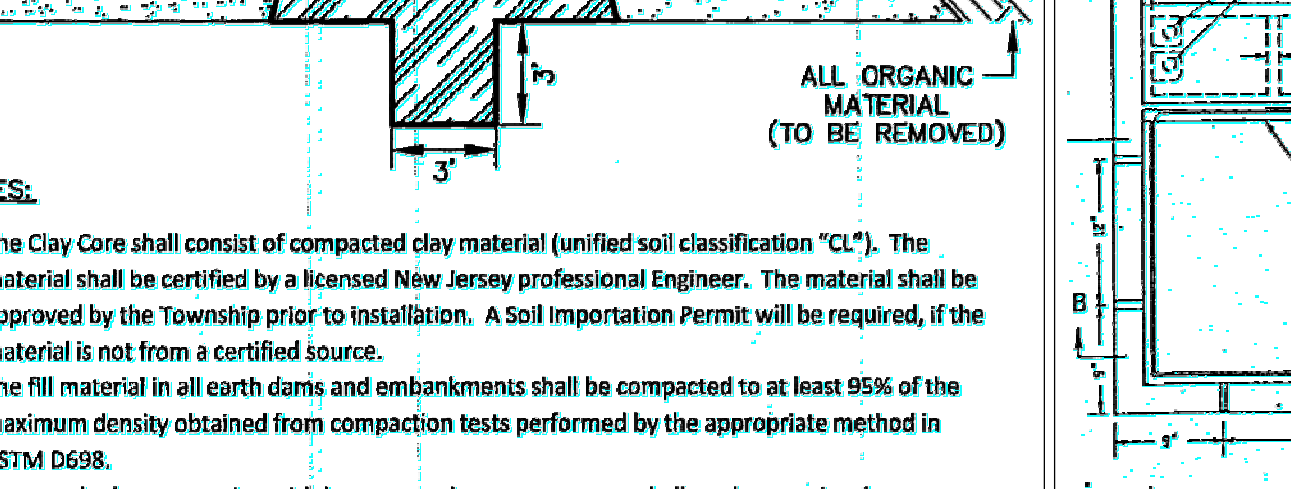
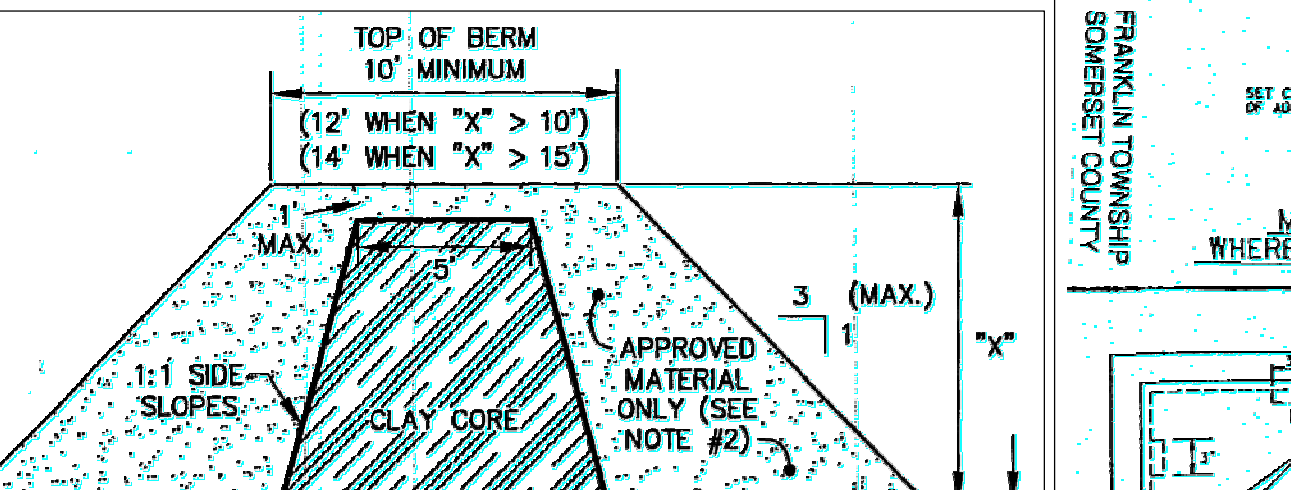
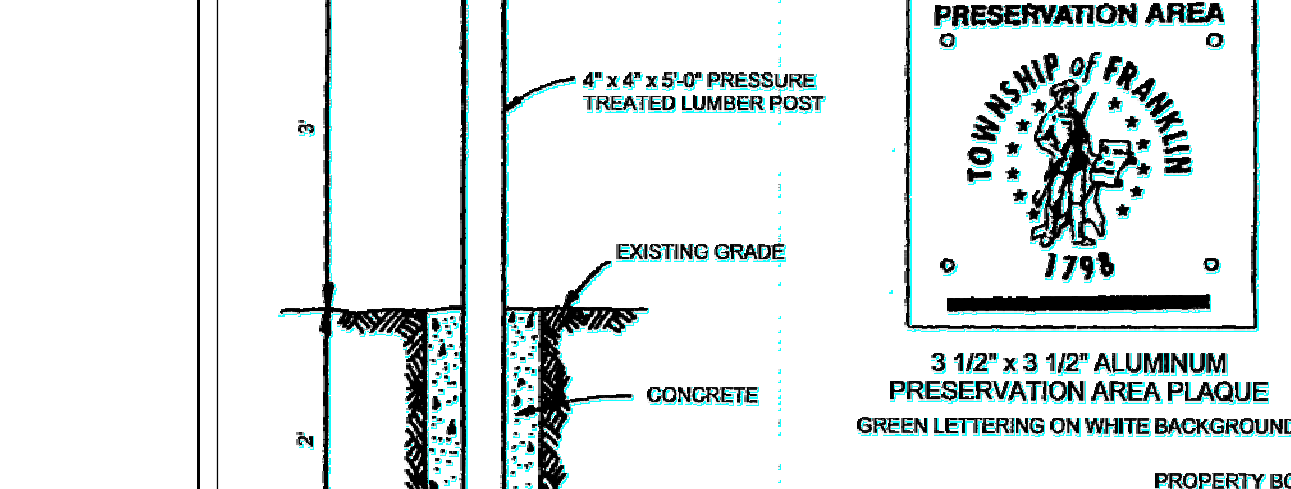
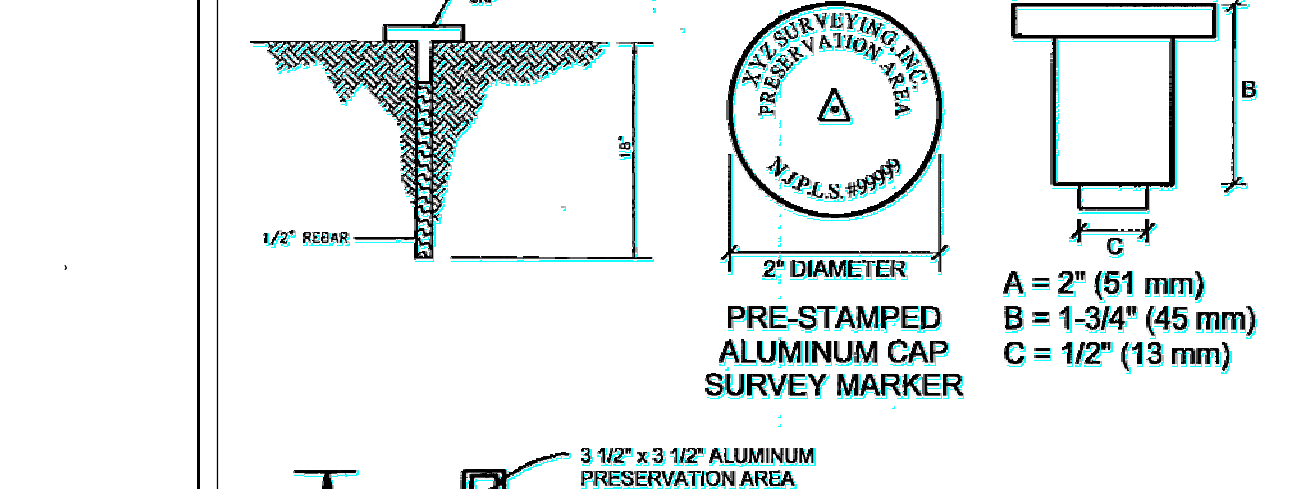
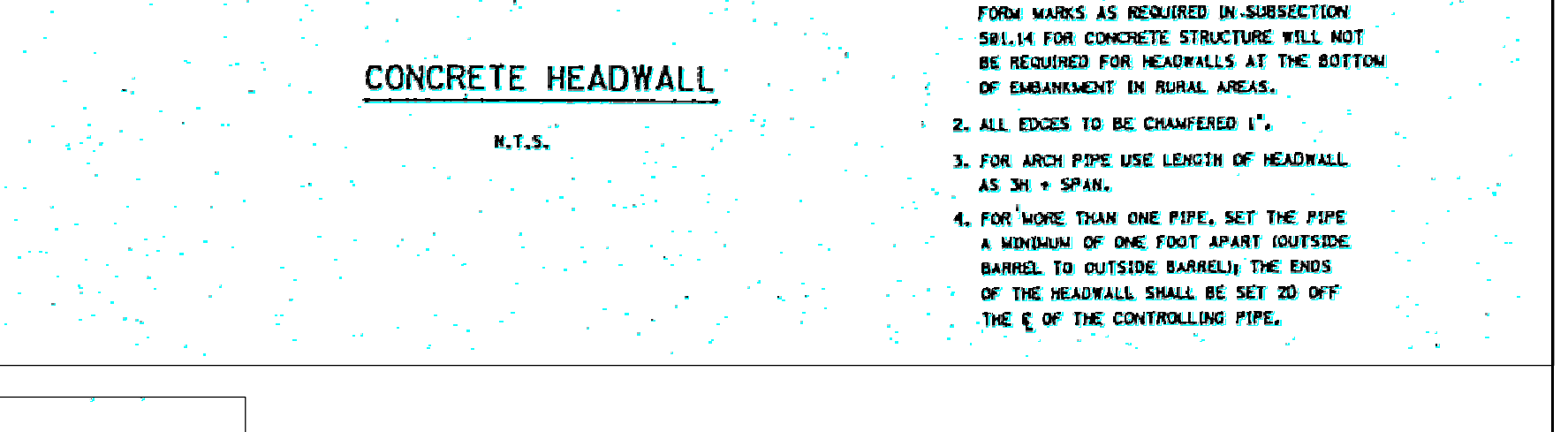
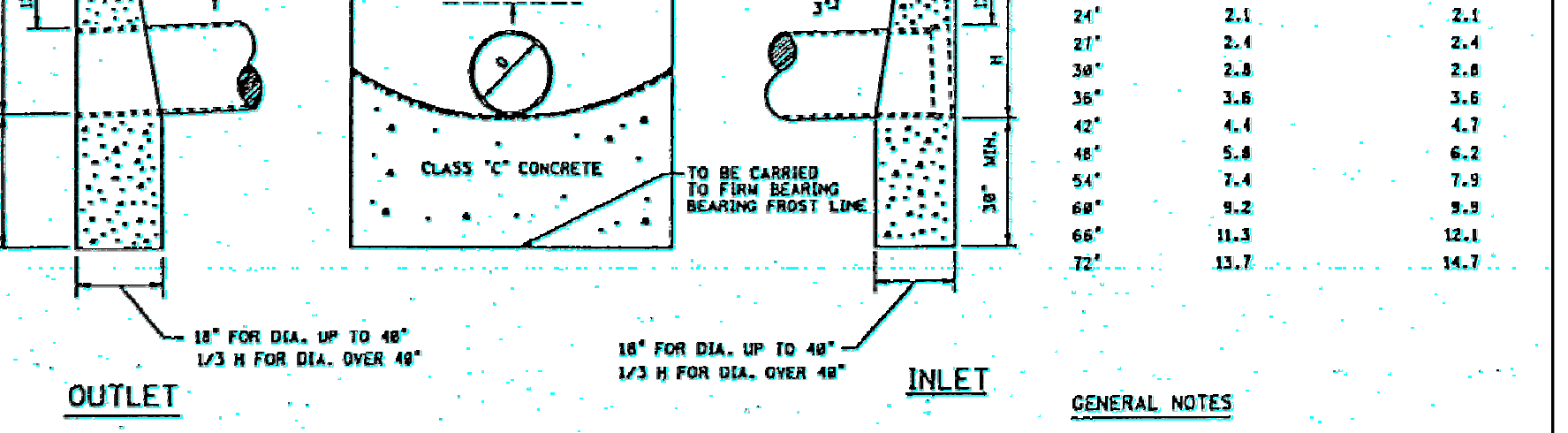
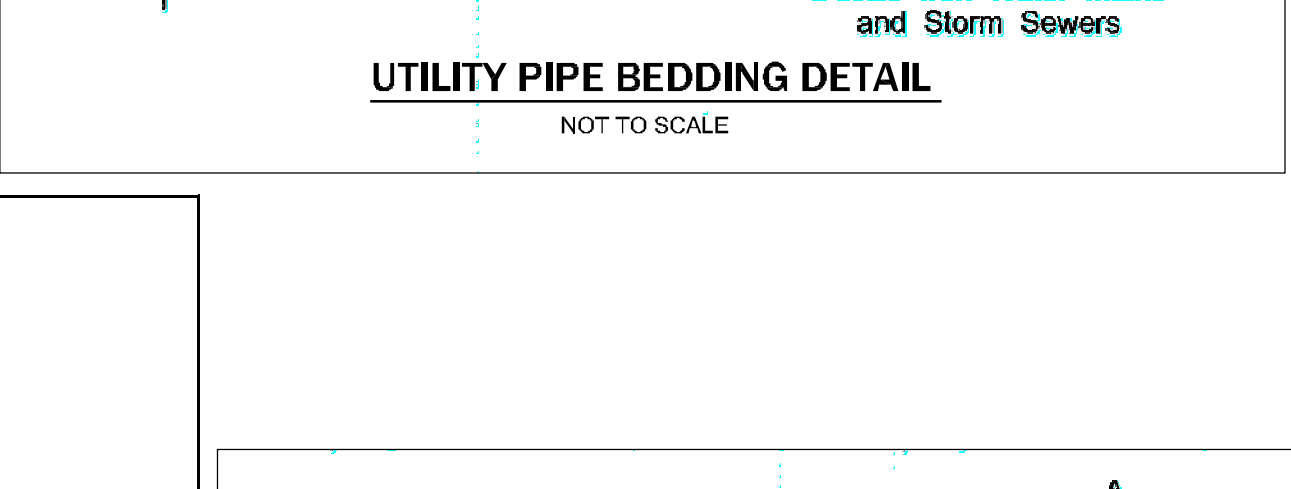
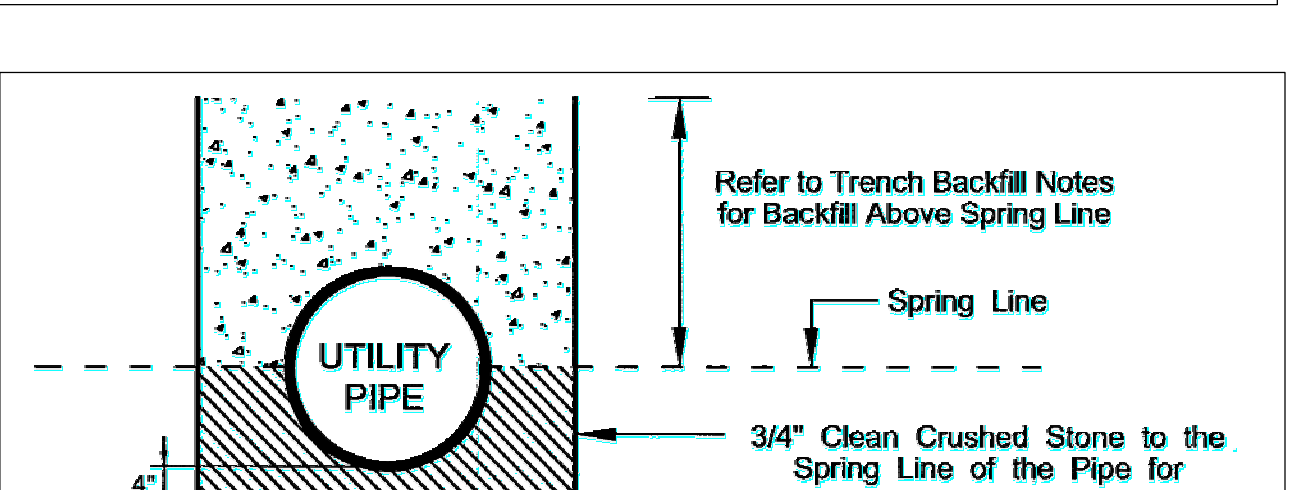
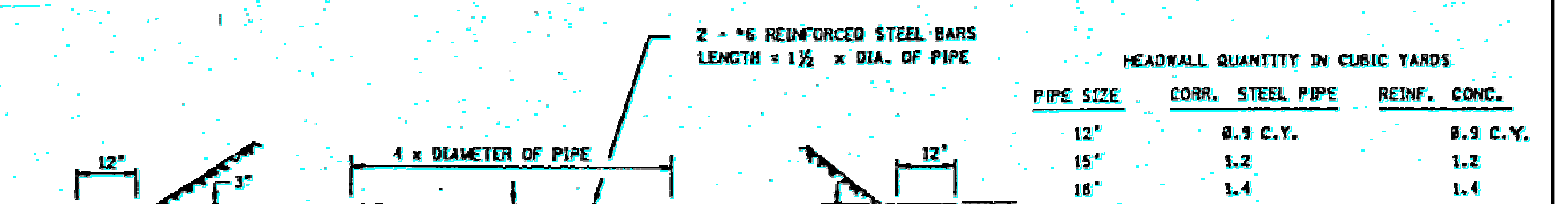
PIPE SIZE	CONC. STEEL PIPE	REQ'D. CONC.	R.S.C. CONC.
12"	1.2	1.2	1.2
15"	1.4	1.4	1.4
18"	1.7	1.7	1.7
24"	2.1	2.1	2.1
30"	2.4	2.4	2.4
36"	2.8	2.8	2.8
42"	3.4	3.4	3.4
48"	4.1	4.1	4.1
54"	5.0	5.0	5.0
60"	6.2	6.2	6.2
66"	7.8	7.8	7.8
72"	10.7	10.7	10.7



- GENERAL NOTES:**
- THE RENDING OF HEADWALLS TO REMOVE FORM MARKS AS REQUIRED IN SUBSECTION 501.14 FOR CONCRETE STRUCTURE WILL NOT BE REQUIRED FOR HEADWALLS AT THE BOTTOM OF EMBANKMENT IN RURAL AREAS.
 - ALL EDGES TO BE CHAMFERED 1".
 - FOR ARCH PIPE USE LENGTH OF HEADWALL AS SHOWN.
 - FOR MORE THAN ONE PIPE, SET THE PIPE A MINIMUM OF ONE FOOT APART OUTSIDE BOUNDARY TO OUTSIDE BOUNDARY THE ENDS OF THE HEADWALL SHALL BE SET 2' OFF OF THE C OF THE CONTROLLING PIPE.



Franklin Township
Somerset County, NJ



NO.	REV.	BY	DATE	DESCRIPTION
1	REV. PER TWP/STAFF/AGENCIES COMMENTS, DEP COMMENTS, SCD COMMENTS, COUNTY COMMENTS		7/20/20	
2				

CREST
 Engineering Associates Inc.
 Civil & Environmental Engineers
 Professional Planners - Surveyors - Landscape Architects
 100 RICE DRIVE
 MILLSTONE TOWNSHIP, NJ 08535
 (609) 486-5500

LOT 6.03
BLOCK 36.01

FRANKLIN TOWNSHIP
 SOMERSET COUNTY, NEW JERSEY

JAYESH S. PATEL, P.E.
 PROFESSIONAL ENGINEER NJ LIC. NO. 35306