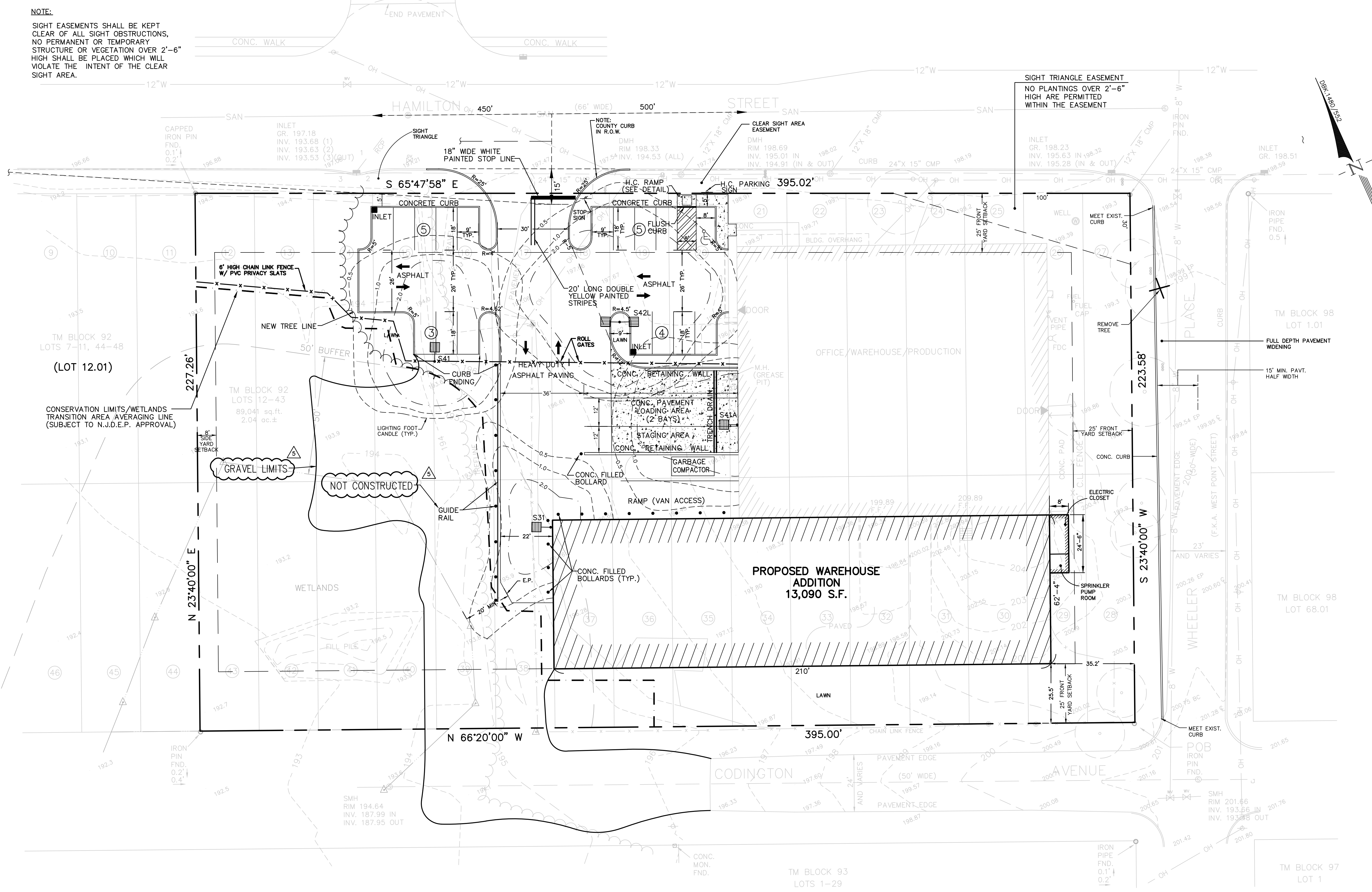


**NOTE:**  
SIGHT EASEMENTS SHALL BE KEPT CLEAR OF ALL SIGHT OBSTRUCTIONS, NO PERMANENT OR TEMPORARY STRUCTURE OR VEGETATION OVER 2'-6" HIGH SHALL BE PLACED WHICH WILL VIOLATE THE INTENT OF THE CLEAR SIGHT AREA.



revisions		
no.	date	description
1	2/8/99	PER RESOLUTION/COUNTY.
2	11/30/01	PER TWP. ENGINEER LETTER - OCT. 29, 2001
3	1/25/01	ADD ELECTRIC & SPRINKLER ROOM
4	4/9/07	ADDED CHAIN LINK FENCE
5	08/04/20	UPDATE EX. GRAVEL

**LEGEND**

- ⊗ GAS VALVE
- ⊗ GAS METER
- ⊗ WATER VALVE
- ⊗ HYDRANT
- ⊗ WATER METER
- ⊗ CURB STOP
- ⊗ DRAINAGE MH
- ⊗ CURB INLET
- ⊗ LAWN INLET
- ⊗ SANITARY MH
- ⊗ CLEANOUT
- ⊗ BOLLARD
- ⊗ SIGN
- ⊗ LIGHT
- ⊗ GUY WIRE
- ⊗ UTILITY POLE
- ⊗ ELECTRIC MH
- ⊗ CONIFEROUS TREE
- ⊗ DECIDUOUS TREE
- X- FENCE
- ⊗ GATE POST
- W- WATER LINE
- G- GAS LINE
- E- ELECTRIC LINE
- S- SANITARY LINE

**The Reynolds Group Inc.**  
 Engineers  
 Landscape Architects  
 Land Surveyors  
 Planners  
 626 No. Thompson Street  
 Raritan, N.J. 08869  
 908-722-1500  
 Fax 908-722-7035

*F. Mitchell Ardman*  
**F. MITCHEL ARDMAN**  
 N.J. PROFESSIONAL ENGINEER LIC. No. 34317

**PATERSON SOUP WORKS, INC.**  
 BLOCK 92, LOTS 12-43  
 TOWNSHIP OF FRANKLIN  
 SOMERSET COUNTY, NEW JERSEY

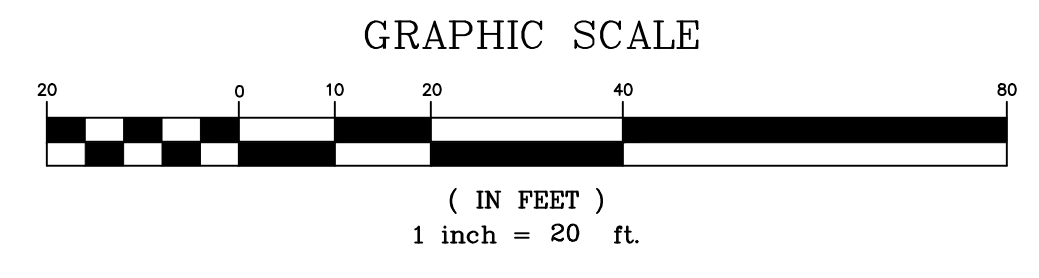
**SITE AND LIGHTING PLAN**

job number	97-021	drawing number	
scale	1"=20'		
checked by	F.M.A.		<b>S-1</b>
drawn by	RJM/LAR		
date	9/19/97	sheet	of

**LUMINAIRE SCHEDULE**

TYP	SYMBOL	DESCRIPTION	LAMP	MOUNTING HEIGHT	QTY
S31	⊗	SPAULDING SINGLE (1) "S3" SEI-S150-III	(1) LU-150	20 FT. (BLDG. MOUNT)	1
S41	⊗	SPAULDING SINGLE (1) "S4" SEI-S250-IV	(1) LU-250	20 FT. (A=BLDG. MOUNT)	2
S42L	⊗	SPAULDING DOUBLE L (2) "S4" SEI-S250-IV	(2) LU-250	20 FT.	1

**NOTES:**  
 1. FIXTURES AND POLES MANUFACTURED BY SPAULDING, INC., 1736 DREMAN AVENUE, CINCINNATI, OHIO 45223 OR APPROVED EQUAL.  
 2. POLES SHALL BE SQUARE STRAIGHT STEEL.



**GENERAL NOTES:**  
 1. AS-BUILT PLANS OF THE ENTIRE SITE, CERTIFIED BY A LICENSED LAND SURVEYOR, ARE TO BE SUBMITTED TO THE TOWNSHIP PRIOR TO RELEASE OF THE PERFORMANCE BONDS.  
 2. PRIOR TO REMOVAL OR IMPORTING ANY SOILS TO THE PROJECT SITE, A SOIL REMOVAL OR IMPORTATION PERMIT IS TO BE OBTAINED FROM THE TOWNSHIP AS REQUIRED BY ORDINANCE.

12 TAX MAP LOT NUMBER