

**PROPOSED SPECULATIVE WAREHOUSE**  
100,125 GROSS SF  
±95,625 SF WAREHOUSE  
±4,500 SF PROPOSED OFFICE  
14 DOCK POSITIONS  
1 DRIVE IN DOOR WITH RAMP

PROPOSED OFFICE  
±4,600 SF

ELEC FIRE PUMP

INSULATED HM DOOR AND FRAME

GALV. STEEL EGRESS STAIR  
9'X10' INSULATED OH DOCK DOOR WITH BUMPERS AND SEAL, TYP  
CONCRETE DRIVE-IN RAMP WITH RETAINING WALL & GAIRD RAIL ON DOCK SIDE  
12'X14' INSULATED OH DRIVE-IN DOOR

GALV. STEEL EGRESS STAIR STEP WITH GRADE

STOP

**COTTONTAIL LN**  
401 COTTONTAIL LANE  
FRANKLINE TOWNSHIP, SOMERSET COUNTY, NJ



Licensee Name: LAWRENCE VALENZA  
Discipline: Registered Architect  
License Registration No.: 21A102008800  
Registration Expires: 07/31/21

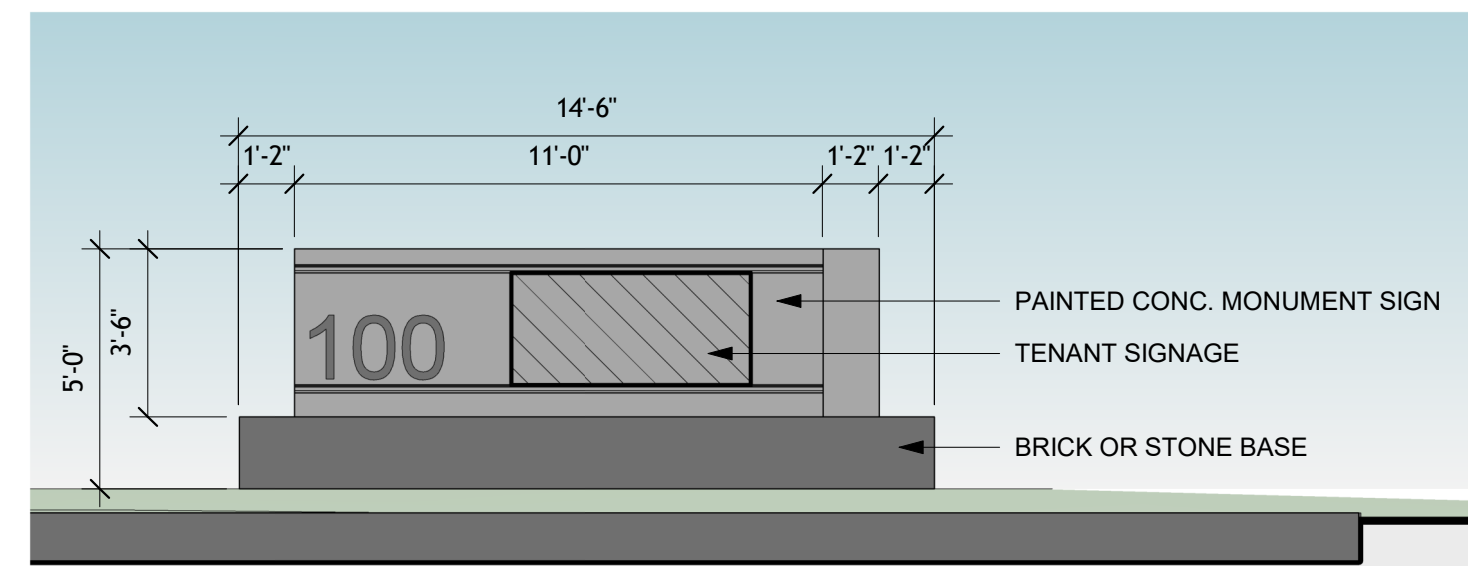
01-21-2021

The Professional Architect's seal affixed to this sheet indicates that the named Architect has prepared or directed the preparation of the material shown only on this sheet. Other drawings and documents not exhibiting this seal shall not be considered prepared by or the responsibility of the undersigned.

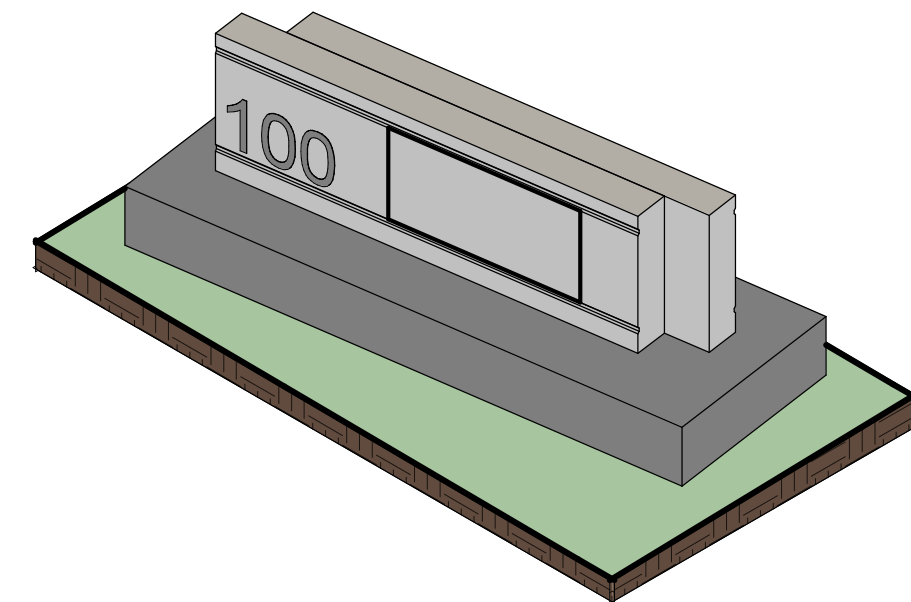
REVISION:

Sheet Issue Date:	01/21/21
Job Number:	20053
Drawn By:	ST
Checked By:	TM
Drawing Title:	

OVERALL FLOOR PLAN



**9 MONUMENT SIGN ELEVATION**  
1/4" = 1'-0"



**8 3D MONUMENT SIGN**

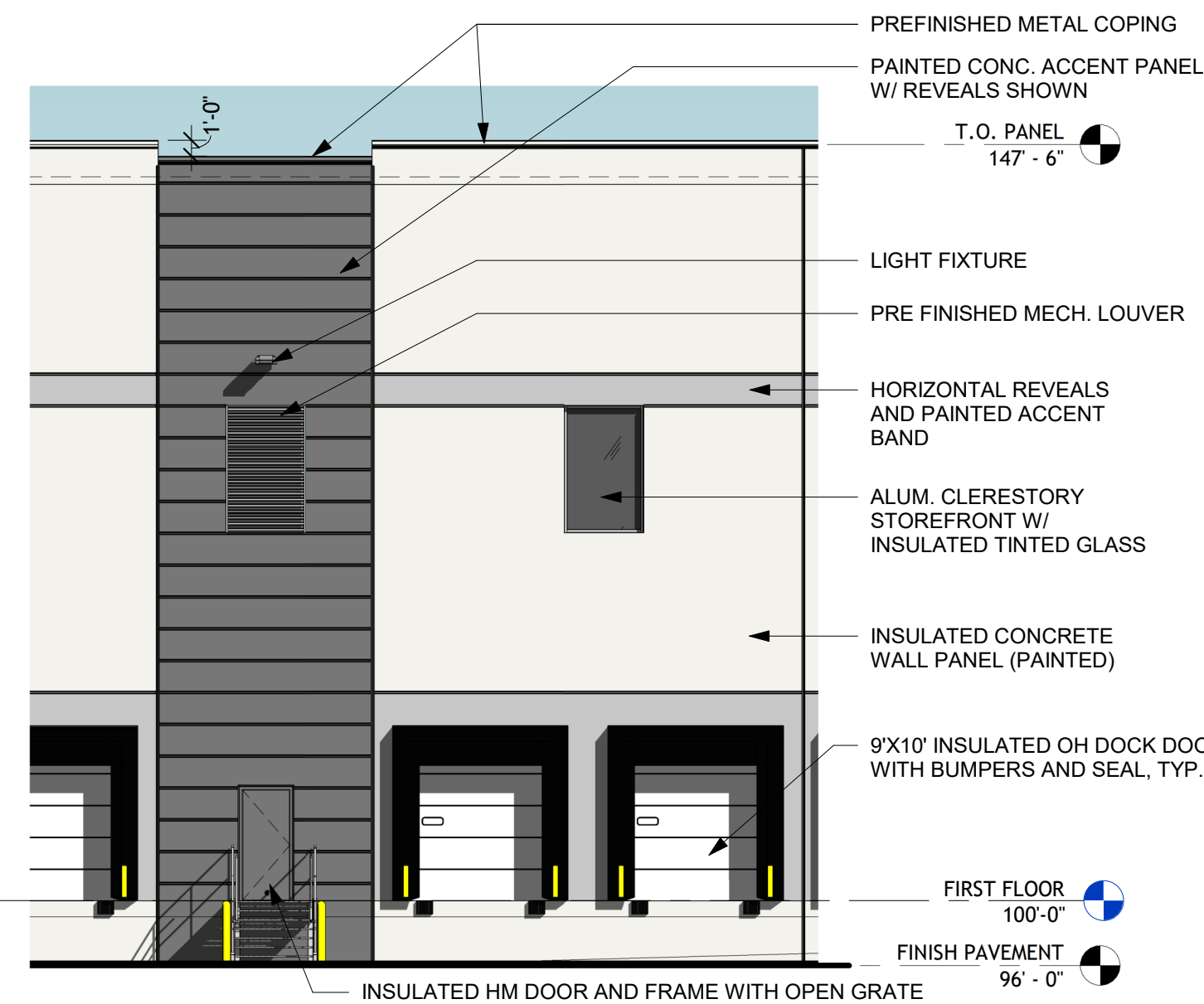
**MATERIALS LEGEND**

PAINTED CONCRETE WALL PANELS

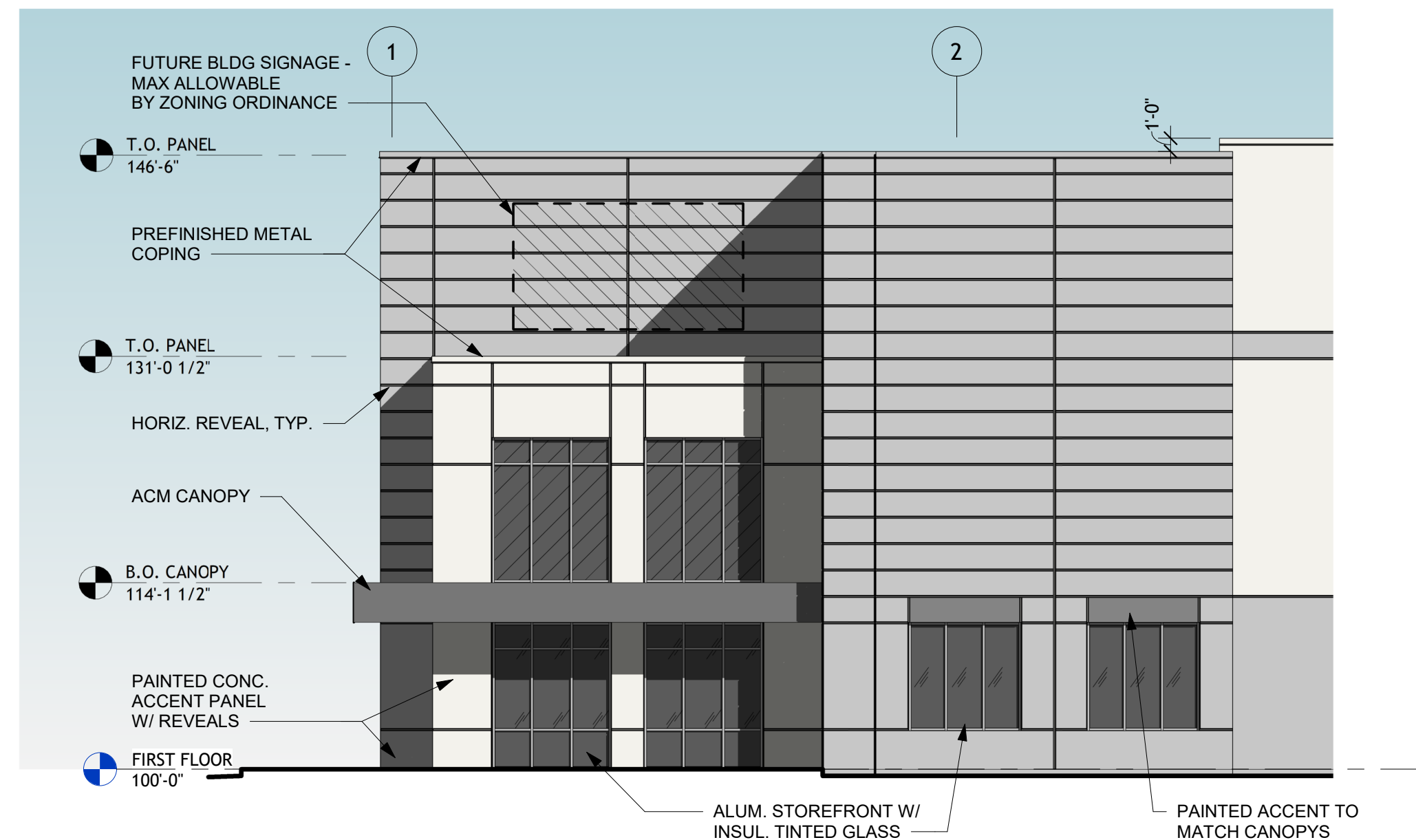
- PT-1 LIGHT GRAY
- PT-2 MEDIUM GRAY
- PT-3 DARK GRAY

GLASS AND GLAZING

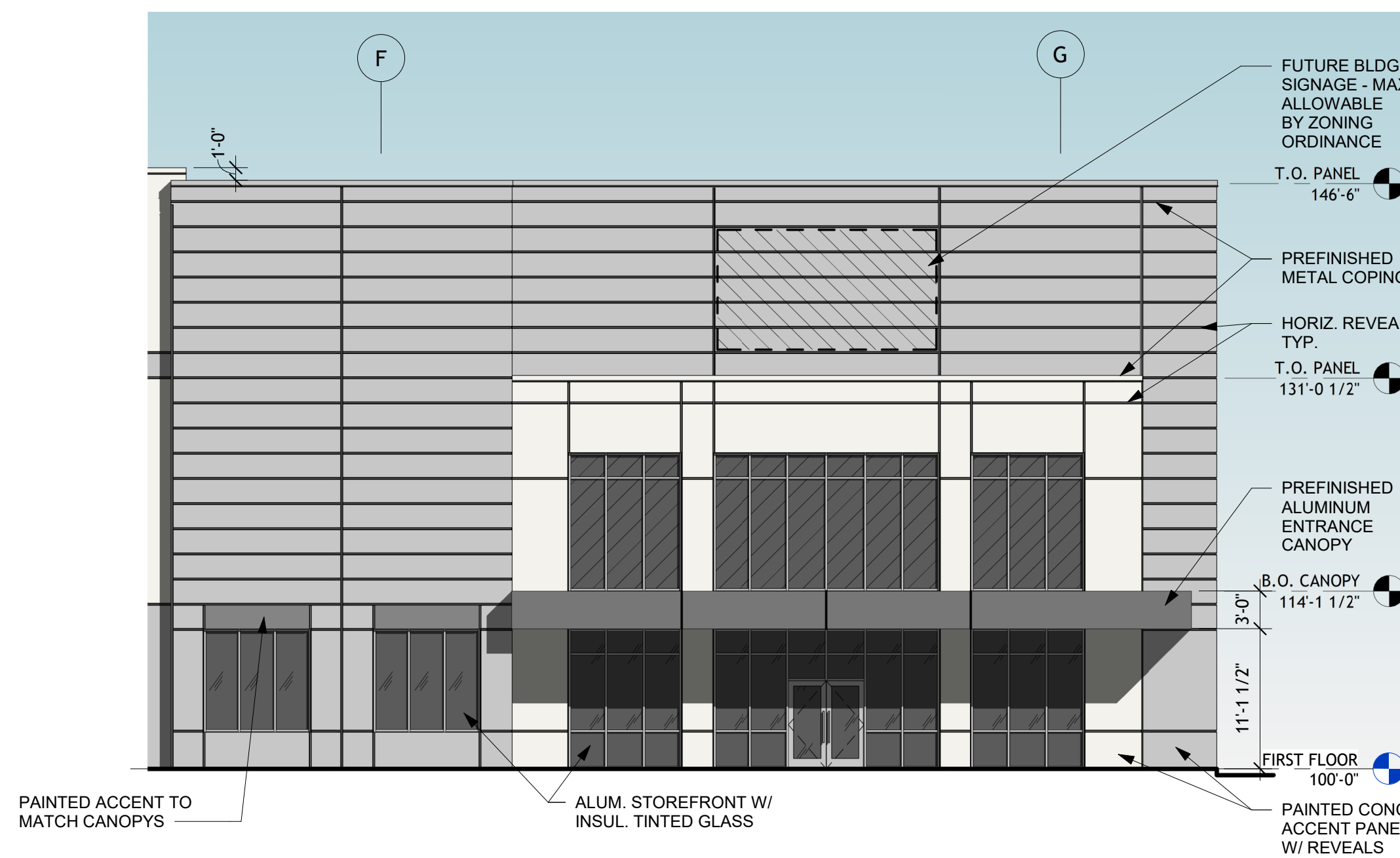
- VISION GLASS
- SPANDREL GLASS



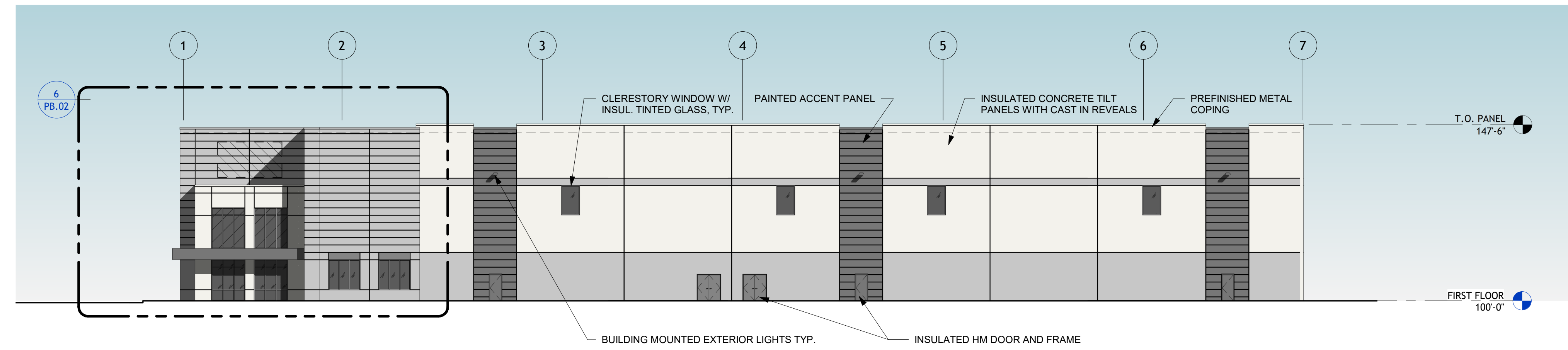
**7 ENLARGED DOCK ELEVATION**  
1" = 10'-0"



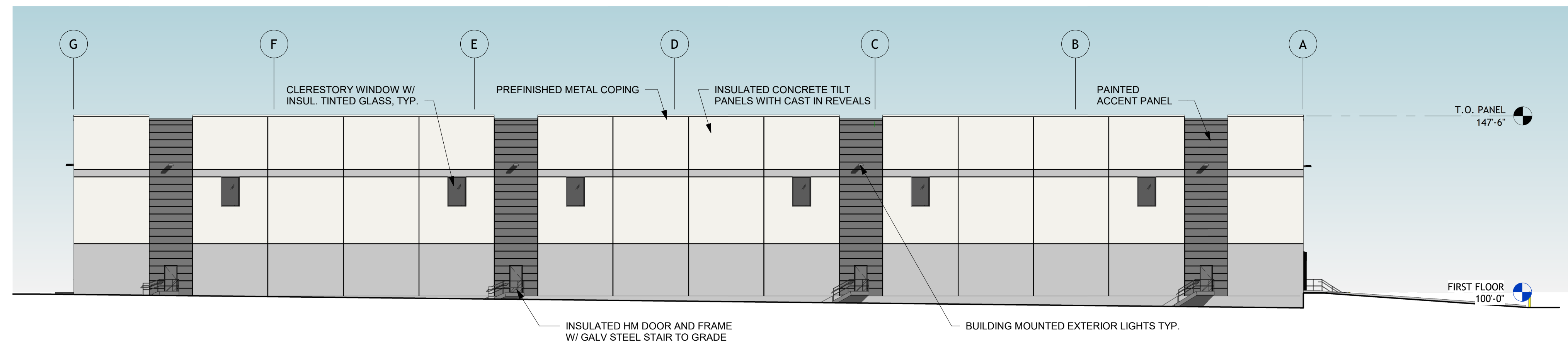
**6 ENLARGED ENTRANCE ELEVATION - EAST**  
1" = 10'-0"



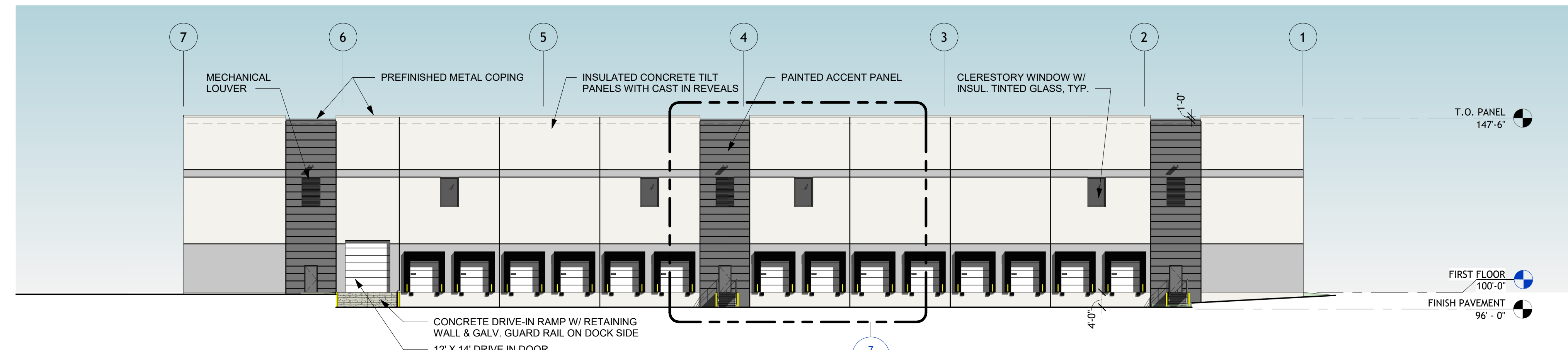
**5 ENLARGED ENTRANCE ELEVATION - SOUTH**  
1" = 10'-0"



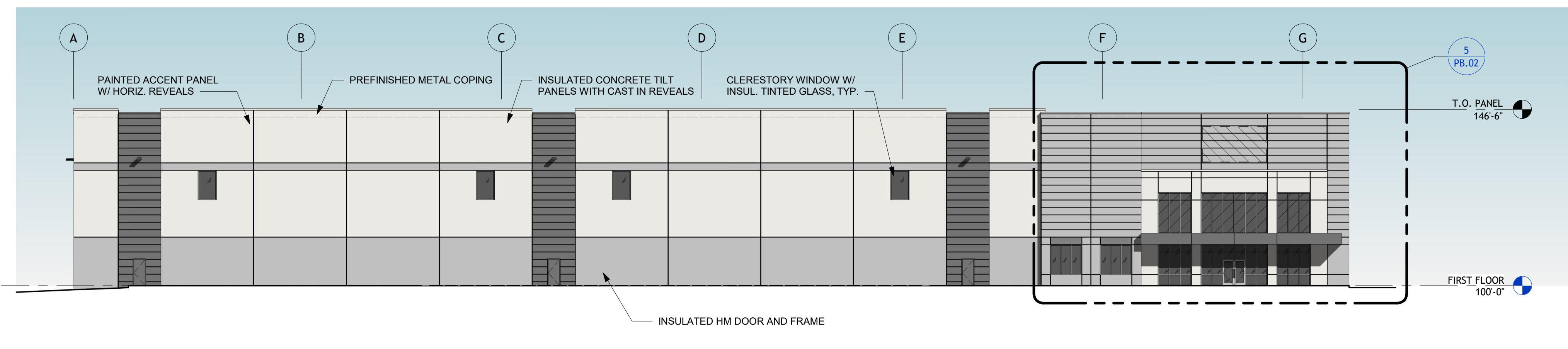
**4 EAST ELEVATION**  
1" = 20'-0"



**3 NORTH ELEVATION**  
1" = 20'-0"



**2 WEST ELEVATION**  
1" = 20'-0"



**1 SOUTH ELEVATION**  
1" = 20'-0"

REVISION:

Sheet Issue Date:	01/21/21
Job Number:	20053
Drawn By:	ST
Checked By:	TM
Drawing Title:	