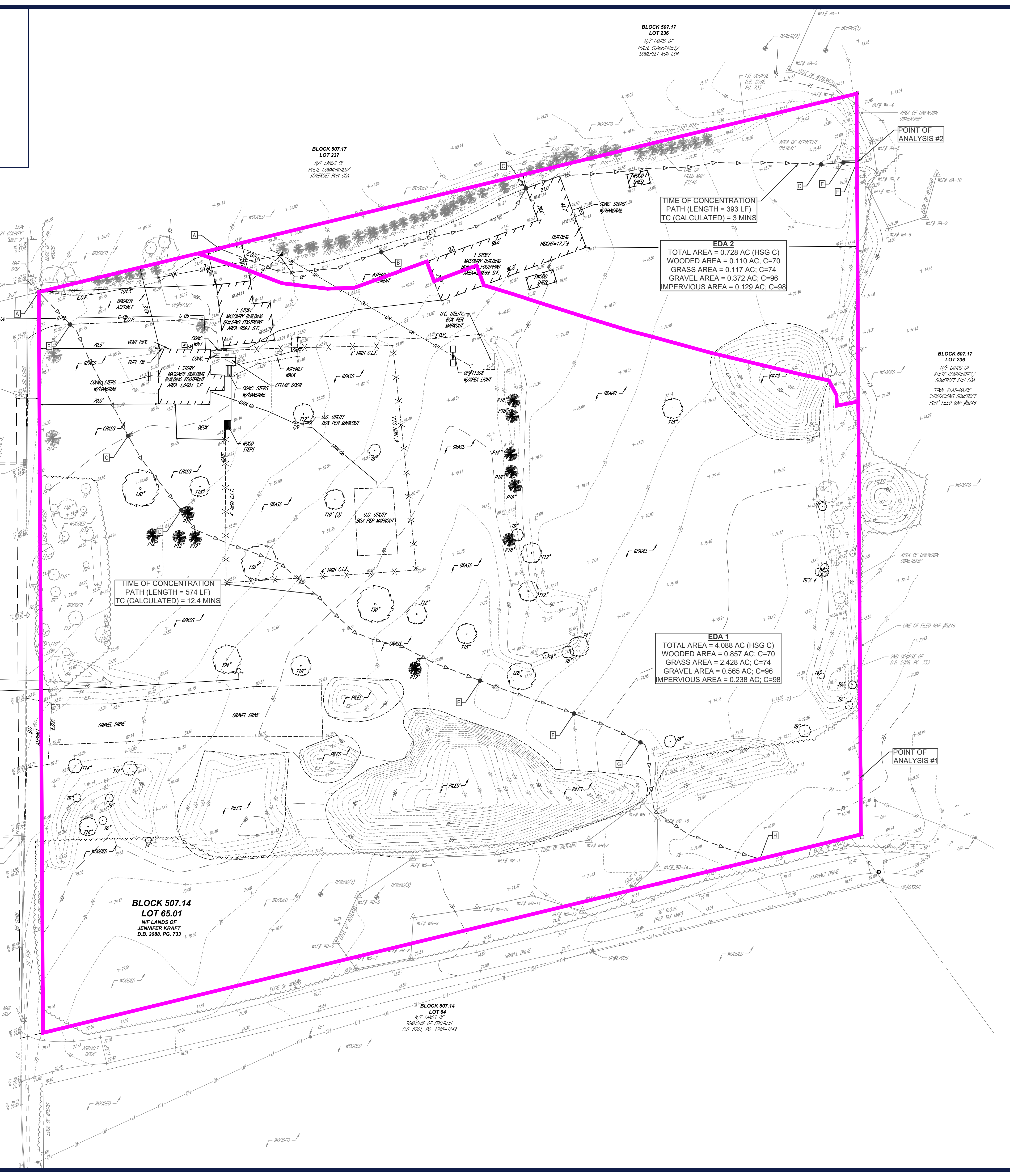


ELIZABETH AVENUE  
(70' WIDE R.O.W.)  
(ASPHALT ROADWAY)  
(TWO WAY TRAFFIC)  
(SOMERSET COUNTY JURISDICTION)  
(35 M.P.H. POSTED SPEED LIMIT)



BLOCK 507.17  
LOT 226  
N/F LANDS OF  
PUBLIC COMPANIES/  
SOMERSET RUN COA

BLOCK 507.17  
LOT 227  
N/F LANDS OF  
PUBLIC COMPANIES/  
SOMERSET RUN COA

BLOCK 507.14  
LOT 65.01  
N/F LANDS OF  
JENNIFER KRAFT  
D.B. 2088, PG. 733

BLOCK 507.14  
LOT 64  
N/F LANDS OF  
TOWNSHIP OF FRANKLIN  
D.B. 3761, PG. 1245-1249

EDA 1  
TOTAL AREA = 4.088 AC (HSG C)  
WOODED AREA = 0.857 AC; C=70  
GRASS AREA = 2.428 AC; C=74  
GRAVEL AREA = 0.565 AC; C=96  
IMPERVIOUS AREA = 0.238 AC; C=98

EDA 2  
TOTAL AREA = 0.728 AC (HSG C)  
WOODED AREA = 0.110 AC; C=70  
GRASS AREA = 0.117 AC; C=74  
GRAVEL AREA = 0.372 AC; C=96  
IMPERVIOUS AREA = 0.129 AC; C=98

TIME OF CONCENTRATION  
PATH (LENGTH = 393 LF)  
TC (CALCULATED) = 3 MINS

TIME OF CONCENTRATION  
PATH (LENGTH = 574 LF)  
TC (CALCULATED) = 12.4 MINS

BOHLER  
SITE CIVIL AND CONSULTING ENGINEERING  
PROGRAM MANAGEMENT  
LANDSCAPE ARCHITECTURE  
SUSTAINABLE DESIGN  
PERMITTING SERVICES  
TRANSPORTATION SERVICES

**REVISIONS**

REV	DATE	COMMENT	DRAWN BY	CHECKED BY

**811**  
Know what's below.  
Call before you dig.  
NEW JERSEY  
YOU MUST CALL 811 BEFORE ANY EXCAVATION  
WHETHER IT'S ON PRIVATE OR PUBLIC LAND.  
1-800-272-1000  
www.nj-811.org

ISSUED FOR MUNICIPAL & AGENCY REVIEW & APPROVAL

THIS DRAWING IS INTENDED FOR MUNICIPAL AND/OR AGENCY REVIEW AND APPROVAL. IT IS NOT INTENDED AS A CONSTRUCTION DOCUMENT UNLESS INDICATED OTHERWISE.

PROJECT NO.: J200933  
DRAWN BY: CR  
CHECKED BY: KM  
DATE: 05/19/2021  
CAD ID: J200933-EDA-0A

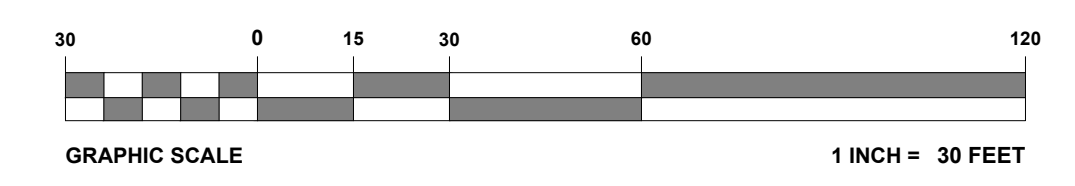
PROJECT: **PRELIMINARY & FINAL MAJOR SITE PLAN**

FOR  
**SAFSTOR REAL ESTATE CO, LLC.**  
PROPOSED  
SELF STORAGE FACILITY & SITE IMPROVEMENTS  
MAP: 75 | BLK: 507.14 | LOT: 65.01  
471 ELIZABETH AVENUE  
FRANKLIN TOWNSHIP  
SOMERSET COUNTY  
NEW JERSEY

BOHLER  
BOHLER ENGINEERING NJ, LLC  
30 INDEPENDENCE BLVD., SUITE 200  
WARREN, NJ 07059  
Phone: (908) 685-5300  
Fax: (908) 754-4401  
www.BohlerEngineering.com  
NJ CERT. OF AUTHORIZATION NO. 24GAS161700 & M6400022

**D.F. WISOTSKY**  
PROFESSIONAL ENGINEER  
NEW JERSEY LICENSE NO. 42951  
CONNECTICUT LICENSE NO. 22098  
NEW YORK LICENSE NO. 073745

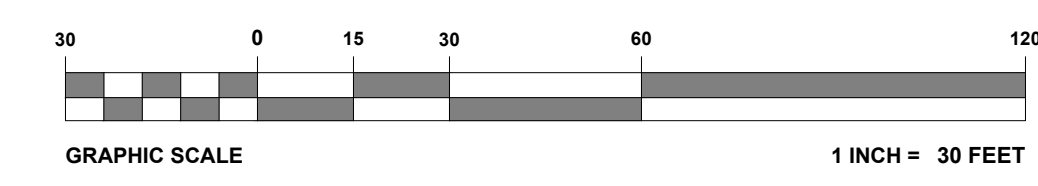
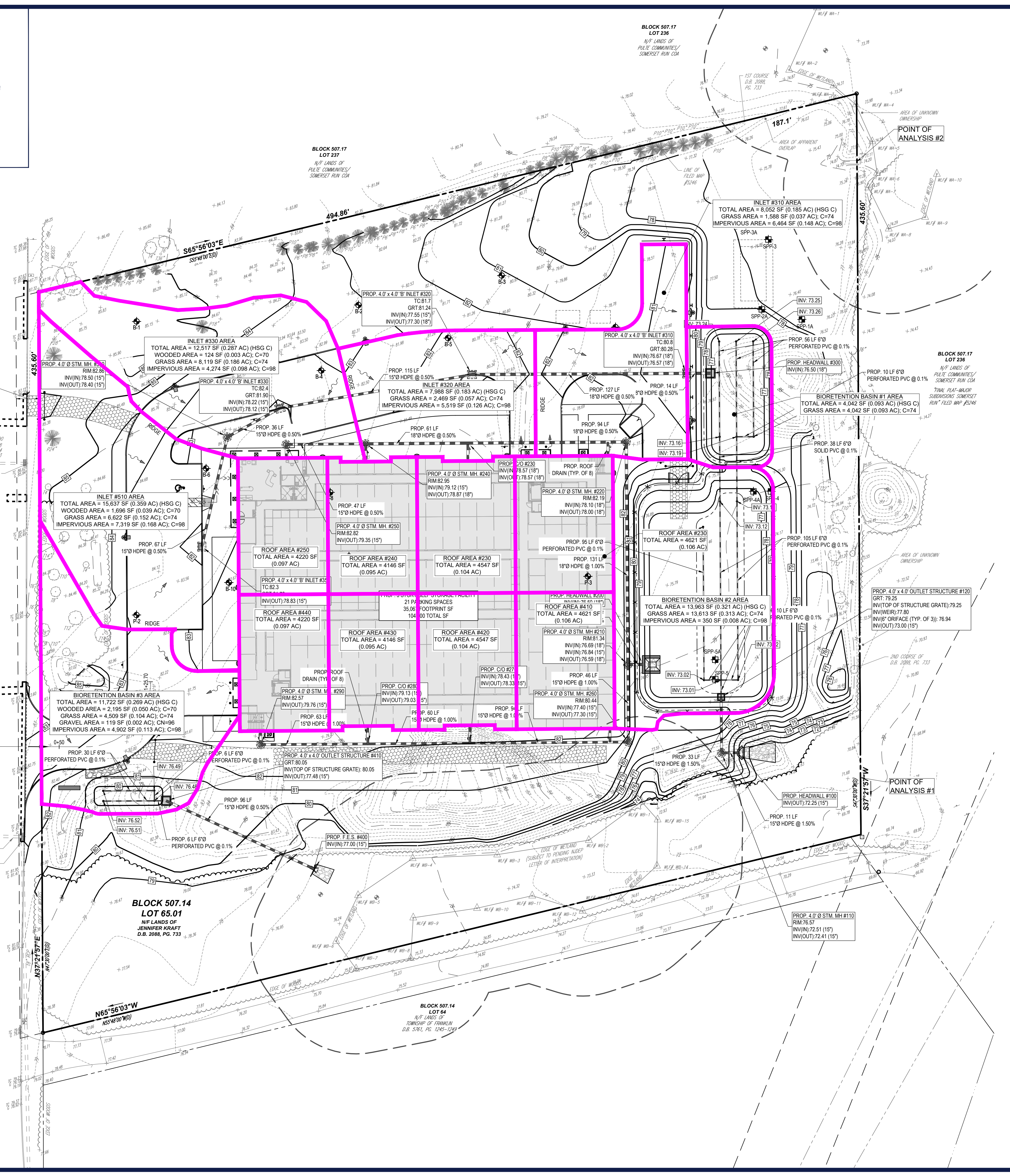
SHEET TITLE:  
**EXISTING DRAINAGE AREAS MAP**  
SHEET NUMBER:  
**C-01**  
ORG. DATE - 05/19/2021







**ELIZABETH AVENUE**  
 (70' WIDE R.O.W.)  
 (ASPHALT ROADWAY)  
 (TWO WAY TRAFFIC)  
 (SOMERSET COUNTY JURISDICTION)  
 (35 M.P.H. POSTED SPEED LIMIT)



**BOHLER**  
 SITE CIVIL AND CONSULTING ENGINEERING  
 PROGRAM MANAGEMENT  
 LANDSCAPE ARCHITECTURE  
 SUSTAINABLE DESIGN  
 PERMITTING SERVICES  
 TRANSPORTATION SERVICES

**REVISIONS**

REV	DATE	COMMENT	DRAWN BY	CHECKED BY

**811**  
 Know what's below.  
 Call before you dig.  
 NEW JERSEY  
 YOU MUST CALL 811 BEFORE ANY EXCAVATION  
 WHETHER IT'S ON PRIVATE OR PUBLIC LAND.  
 1-800-272-1000  
 www.nj-811.org

**ISSUED FOR MUNICIPAL & AGENCY REVIEW & APPROVAL**

THIS DRAWING IS INTENDED FOR MUNICIPAL AND/OR AGENCY REVIEW AND APPROVAL. IT IS NOT INTENDED AS A CONSTRUCTION DOCUMENT UNLESS INDICATED OTHERWISE.

PROJECT No.: J200933  
 DRAWN BY: CR  
 CHECKED BY: KM  
 DATE: 05/19/2021  
 CAD ID: J200933-DA-0A

**PRELIMINARY & FINAL MAJOR SITE PLAN**

FOR

**SAFSTOR REAL ESTATE CO, LLC.**

PROPOSED  
 SELF STORAGE FACILITY & SITE IMPROVEMENTS

MAP: 75 | BLK: 507.14 | LOT: 65.01  
 471 ELIZABETH AVENUE  
 FRANKLIN TOWNSHIP  
 SOMERSET COUNTY  
 NEW JERSEY

**BOHLER**  
 BOHLER ENGINEERING NJ, LLC  
 30 INDEPENDENCE BLVD., SUITE 200  
 WARREN, NJ 07059  
 Phone: (908) 685-6300  
 Fax: (908) 754-4401  
 www.BohlerEngineering.com  
NJ CERT. OF AUTHORIZATION NO. 246A28161700 & M64000122

**D.F. WISOTSKY**

PROFESSIONAL ENGINEER  
 NEW JERSEY LICENSE No. 42957  
 CONNECTICUT LICENSE No. 22048  
 NEW YORK LICENSE No. 073945

SHEET TITLE:  
**INLET DRAINAGE AREA MAP**

SHEET NUMBER:  
**C-01**

ORG. DATE - 05/19/2021

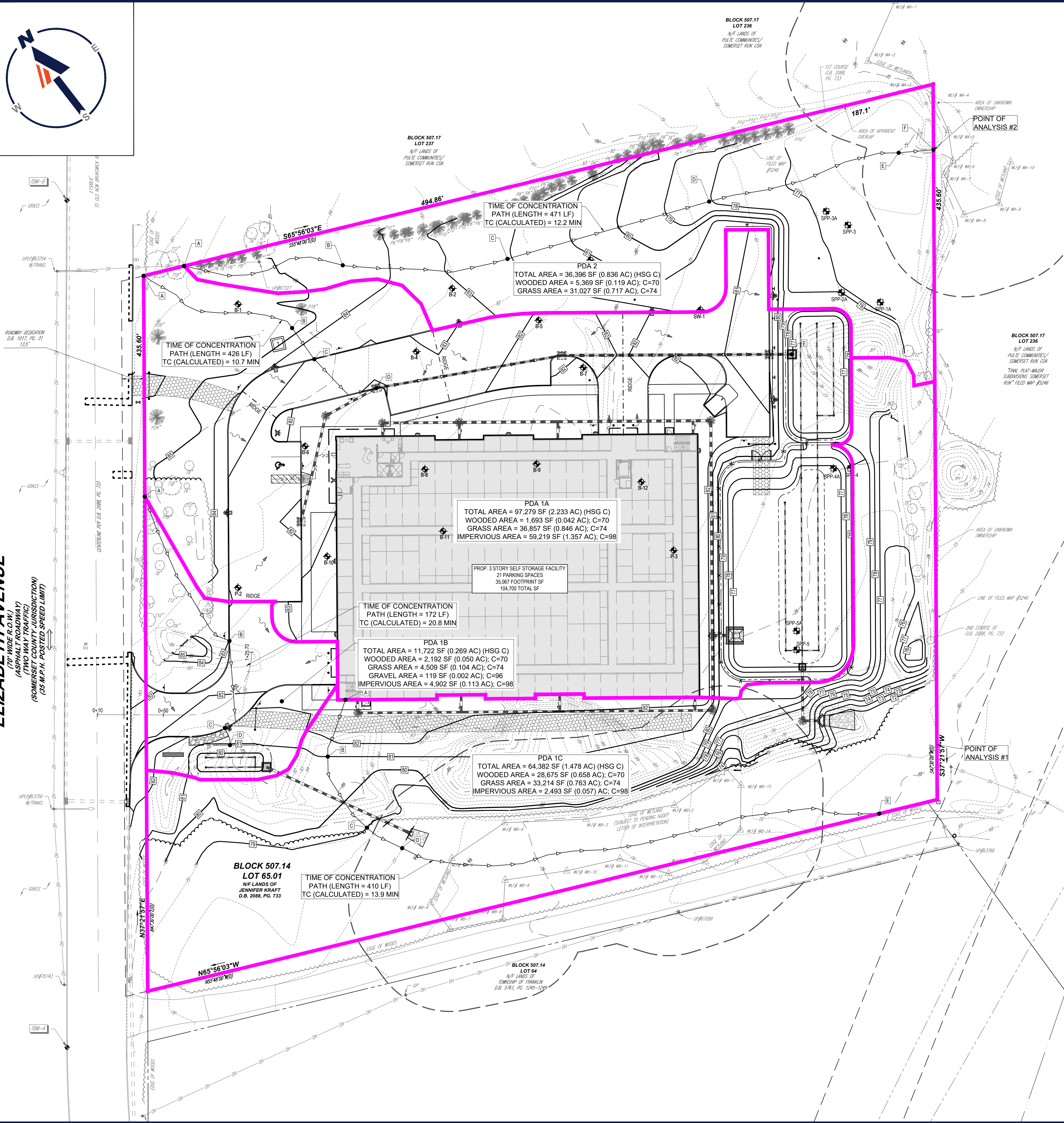
C:\2021\202103\DRAWINGS\CURRENT DRAWINGS\SUPPLEMENT DRAWINGS\DRAINAGE MAPS\J200933-DA-0A-1-LAYOUT.CAD IDAM





**ELIZABETH AVENUE**  
 (70' WIDE R.O.W.)  
 (ASPHALT ROADWAY)  
 (TWO WAY TRAFFIC)  
 (SOMERSET COUNTY JURISDICTION)  
 (35 M.P.H. POSTED SPEED LIMIT)

G:\2024\2024\DRAWINGS\CURRENT DRAWINGS\SUPPLEMENT DRAWINGS\RAINAGE MAPS\B\2024\003\3-PDA-1A-1-LAYOUT-C-01.PDM



**REVISIONS**

REV	DATE	COMMENT	DRAWN BY	CHECKED BY

**811**  
 Know what's below.  
 Call before you dig.  
 NEW JERSEY  
 YOU MUST CALL 811 BEFORE ANY EXCAVATION  
 WHETHER IT'S ON PRIVATE OR PUBLIC LAND.  
 1-800-272-1000  
 www.nj-811.org

**ISSUED FOR MUNICIPAL & AGENCY REVIEW & APPROVAL**

THIS DRAWING IS INTENDED FOR MUNICIPAL AND/OR AGENCY REVIEW AND APPROVAL. IT IS NOT INTENDED AS A CONSTRUCTION DOCUMENT UNLESS INDICATED OTHERWISE.

PROJECT No.: J200933  
 DRAWN BY: CR  
 CHECKED BY: KM  
 DATE: 05/19/2024  
 CAD ID: J200933-PDA-0A

**PRELIMINARY & FINAL MAJOR SITE PLAN**

FOR  
**SAFSTOR REAL ESTATE CO, LLC.**

PROPOSED  
 SELF STORAGE FACILITY & SITE IMPROVEMENTS

MAP: 75 | BLK: 507.14 | LOT: 65.01  
 471 ELIZABETH AVENUE  
 FRANKLIN TOWNSHIP  
 SOMERSET COUNTY  
 NEW JERSEY

**BOHLER**  
 BOHLER ENGINEERING NJ, LLC  
 30 INDEPENDENCE BLVD., SUITE 200  
 WARREN, NJ 07059  
 Phone: (908) 665-6300  
 Fax: (908) 754-4401  
 www.BohlerEngineering.com  
 NJ CERT. OF AUTHORIZATION NO. 24G28191700 & M6000122

**D.F. WISOTSKY**  
 PROFESSIONAL ENGINEER  
 NEW JERSEY LICENSE No. 42957  
 CONNECTICUT LICENSE No. 22048  
 NEW YORK LICENSE No. 073745

SHEET TITLE:  
**PROPOSED DRAINAGE AREA MAP**

SHEET NUMBER:  
**C-01**

ORG. DATE - 05/19/2024

