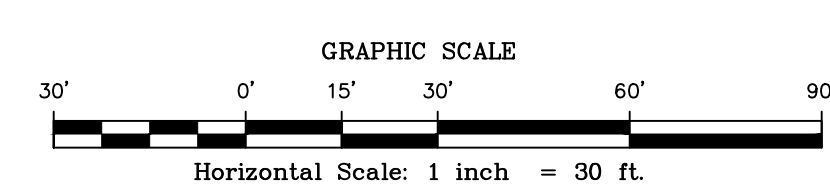


F:\work\1509FS\ENR\Hydrology\1509FS-DIA\_MAPS\_171230.dwg

IRVINGTON AVENUE 40 FT. R.O.W.



DATE:	DECEMBER 15, 2017
SCALE:	1" = 30'
DESIGNED BY:	M.K.F.
DRAWN BY:	A.B.
CHECKED BY:	M.K.F.
REVISIONS	AUTH. DATE JOB No. 15-09-FS

**Van Cleaf**  
ENGINEERING ASSOCIATES

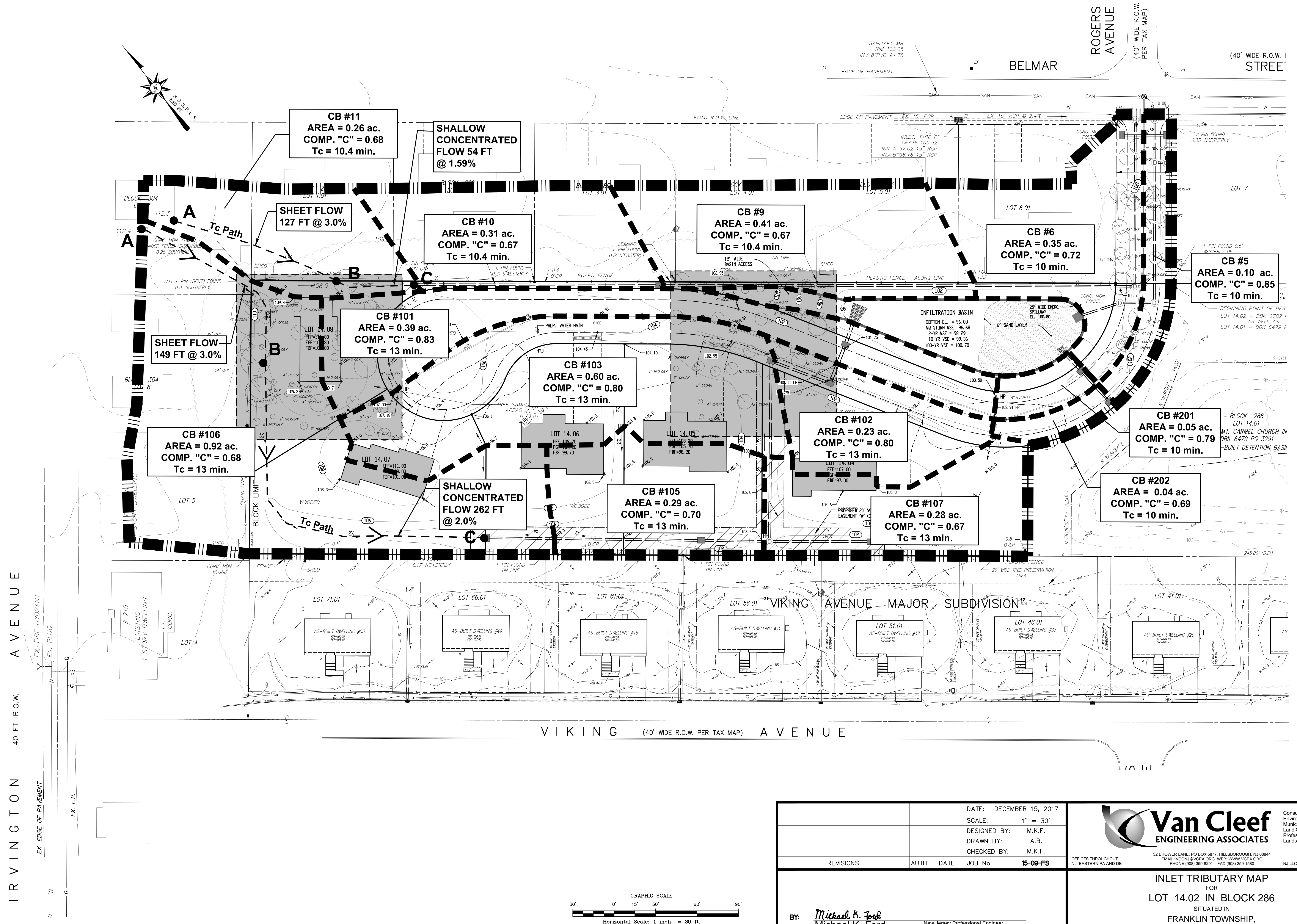
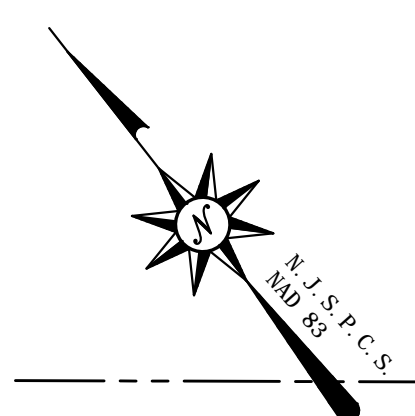
Consulting Civil Engineering  
Environmental Engineering  
Municipal Engineering  
Land Surveying  
Professional Planning  
Landscape Architecture

32 BROWER LANE, PO BOX 5877, HILLSBOROUGH, NJ 08844  
EMAIL: VCCNJ@VCEA.ORG WEB: WWW.VCEA.ORG  
PHONE (908) 529-8241 FAX (908) 529-1590 NJ LLC CERT. No. 246A28132200

EXISTING CONDITIONS DRAINAGE AREA MAP  
FOR  
LOT 14.02 IN BLOCK 286  
SITUATED IN  
FRANKLIN TOWNSHIP,  
SOMERSET COUNTY, NEW JERSEY

BY: *Michael K. Ford*  
Michael K. Ford  
New Jersey Professional Engineer  
No. 34722





**CB #11**  
 AREA = 0.26 ac.  
 COMP. "C" = 0.68  
 Tc = 10.4 min.

**SHALLOW CONCENTRATED FLOW 54 FT @ 1.59%**

**SHEET FLOW 127 FT @ 3.0%**

**CB #10**  
 AREA = 0.31 ac.  
 COMP. "C" = 0.67  
 Tc = 10.4 min.

**CB #9**  
 AREA = 0.41 ac.  
 COMP. "C" = 0.67  
 Tc = 10.4 min.

**CB #6**  
 AREA = 0.35 ac.  
 COMP. "C" = 0.72  
 Tc = 10 min.

**CB #5**  
 AREA = 0.10 ac.  
 COMP. "C" = 0.85  
 Tc = 10 min.

**SHEET FLOW 149 FT @ 3.0%**

**CB #101**  
 AREA = 0.39 ac.  
 COMP. "C" = 0.83  
 Tc = 13 min.

**CB #103**  
 AREA = 0.60 ac.  
 COMP. "C" = 0.80  
 Tc = 13 min.

**CB #102**  
 AREA = 0.23 ac.  
 COMP. "C" = 0.80  
 Tc = 13 min.

**CB #201**  
 AREA = 0.05 ac.  
 COMP. "C" = 0.79  
 Tc = 10 min.

**CB #106**  
 AREA = 0.92 ac.  
 COMP. "C" = 0.68  
 Tc = 13 min.

**SHALLOW CONCENTRATED FLOW 262 FT @ 2.0%**

**CB #105**  
 AREA = 0.29 ac.  
 COMP. "C" = 0.70  
 Tc = 13 min.

**CB #107**  
 AREA = 0.28 ac.  
 COMP. "C" = 0.67  
 Tc = 13 min.

**CB #202**  
 AREA = 0.04 ac.  
 COMP. "C" = 0.69  
 Tc = 10 min.

IRVINGTON AVENUE 40 FT. R.O.W.

BELMAR

ROGERS AVENUE

(40' WIDE R.O.W. PER TAX MAP)

(40' WIDE R.O.W. PER TAX MAP) STREET

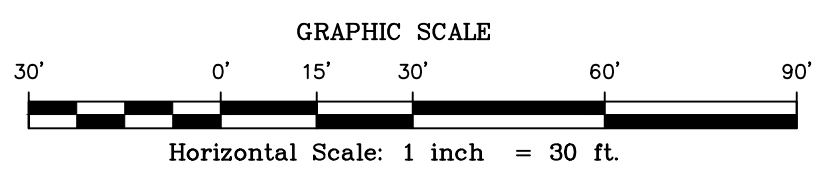
VIKING AVENUE (40' WIDE R.O.W. PER TAX MAP) AVENUE

DATE:	DECEMBER 15, 2017
SCALE:	1" = 30'
DESIGNED BY:	M.K.F.
DRAWN BY:	A.B.
CHECKED BY:	M.K.F.
REVISIONS	AUTH. DATE JOB No. 15-09-FS

**Van Cleaf**  
 ENGINEERING ASSOCIATES

Consulting Civil Engineering  
 Environmental Engineering  
 Municipal Engineering  
 Land Surveying  
 Professional Planning  
 Landscape Architecture

32 BROWER LANE, PO BOX 5877, HILLSBOROUGH, NJ 08844  
 EMAIL: VCC@VCEA.ORG WEB: WWW.VCEA.ORG  
 PHONE: (908) 529-8201 FAX: (908) 529-1590



BY: *Michael K. Ford*  
 Michael K. Ford  
 New Jersey Professional Engineer  
 No. 34722

**INLET TRIBUTARY MAP**  
 FOR  
**LOT 14.02 IN BLOCK 286**  
 SITUATED IN  
 FRANKLIN TOWNSHIP,  
 SOMERSET COUNTY, NEW JERSEY

F:\work\1509FS\ENR\Hydrology\1509FS-D\A\_MAPS\_171230.dwg