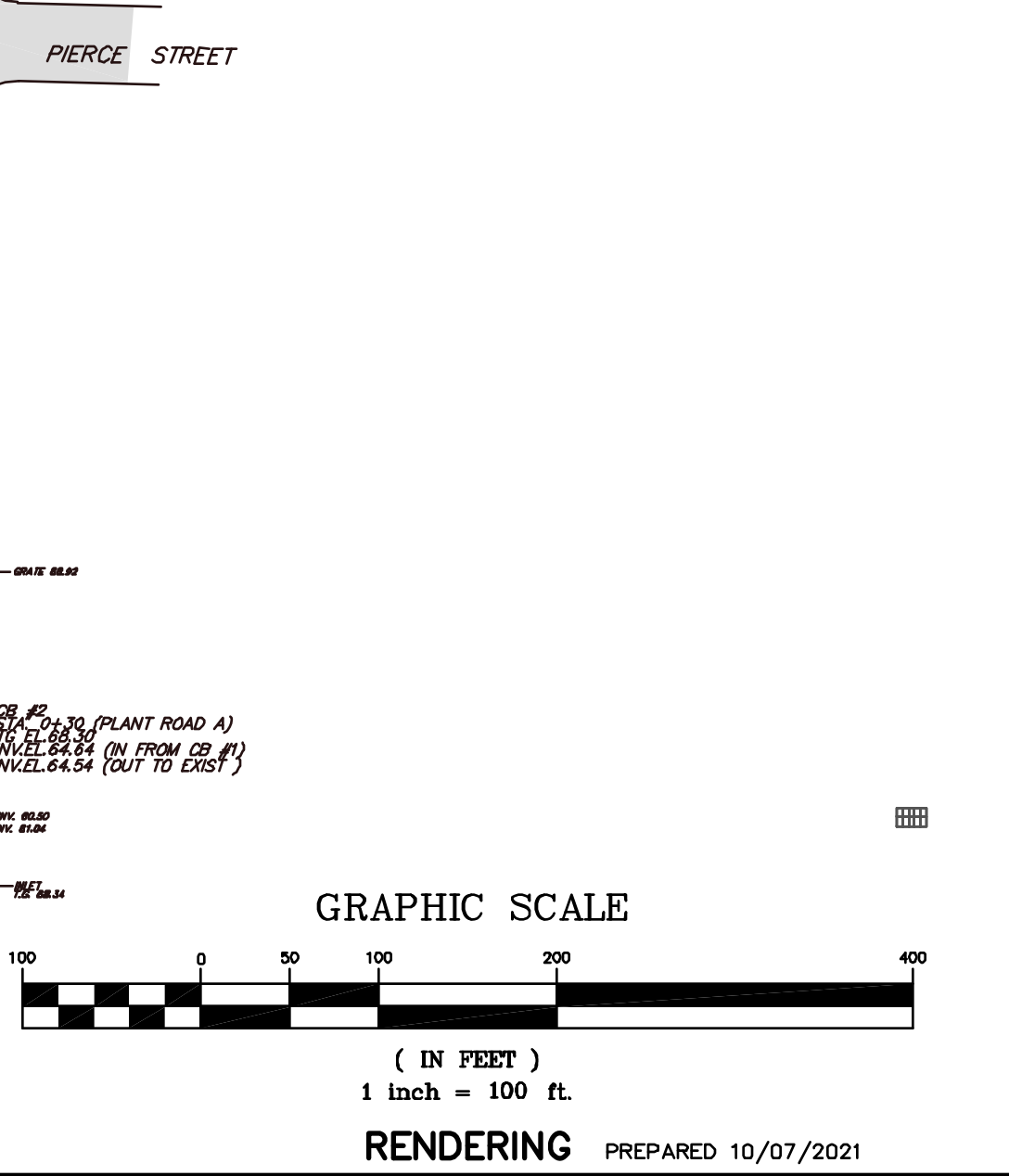




ZONE DATA
 ZONE "B-1" BUSINESS AND INDUSTRY DISTRICT
 EXISTING USE: WATER TREATMENT FACILITY
 PROPOSED USE: WATER TREATMENT FACILITY
 TOTAL TRACT AREA LOT 6.02 BLOCK 516.01 = 4,298,188 S.F. OR 98.673 ACRES

SCHEDULE OF BULK REQUIREMENTS			
DESCRIPTION	REQUIRED	EXISTING	PROPOSED
INTERIOR LOT			
MIN. LOT AREA	2 ACRES	98.673 ACRES	98.673 ACRES
MIN. LOT FRONTAGE	150 FT	321.62 FT	321.62 FT
PRIMARY STRUCTURE			
MIN. FRONT YARD SETBACK	50 FT	78.3 FT	78.3 FT
MIN. SIDE YARD SETBACK	10 FT	71.03 FT	71.03 FT
MIN. TOTAL 2 SIDE YARDS	50 FT	845 FT	845 FT
MIN. REAR YARD SETBACK	25 FT	787 FT	787 FT
MAX. BUILDING HEIGHT	5 STORES OR 65 FT	<55 FT	<55 FT
MAX. LOT COVERAGE	50%	6.0%	6.0%
MAX. IMPERVIOUS COVERAGE	60%	12.7%	12.7%
MAX. FLOOR AREA RATIO	0.5	0.06	0.06
ACCESSORY BUILDING			
MIN. SIDE YARD	20 FT	52.70 FT	52.70 FT
MIN. REAR YARD	25 FT	219 FT	51.8 FT

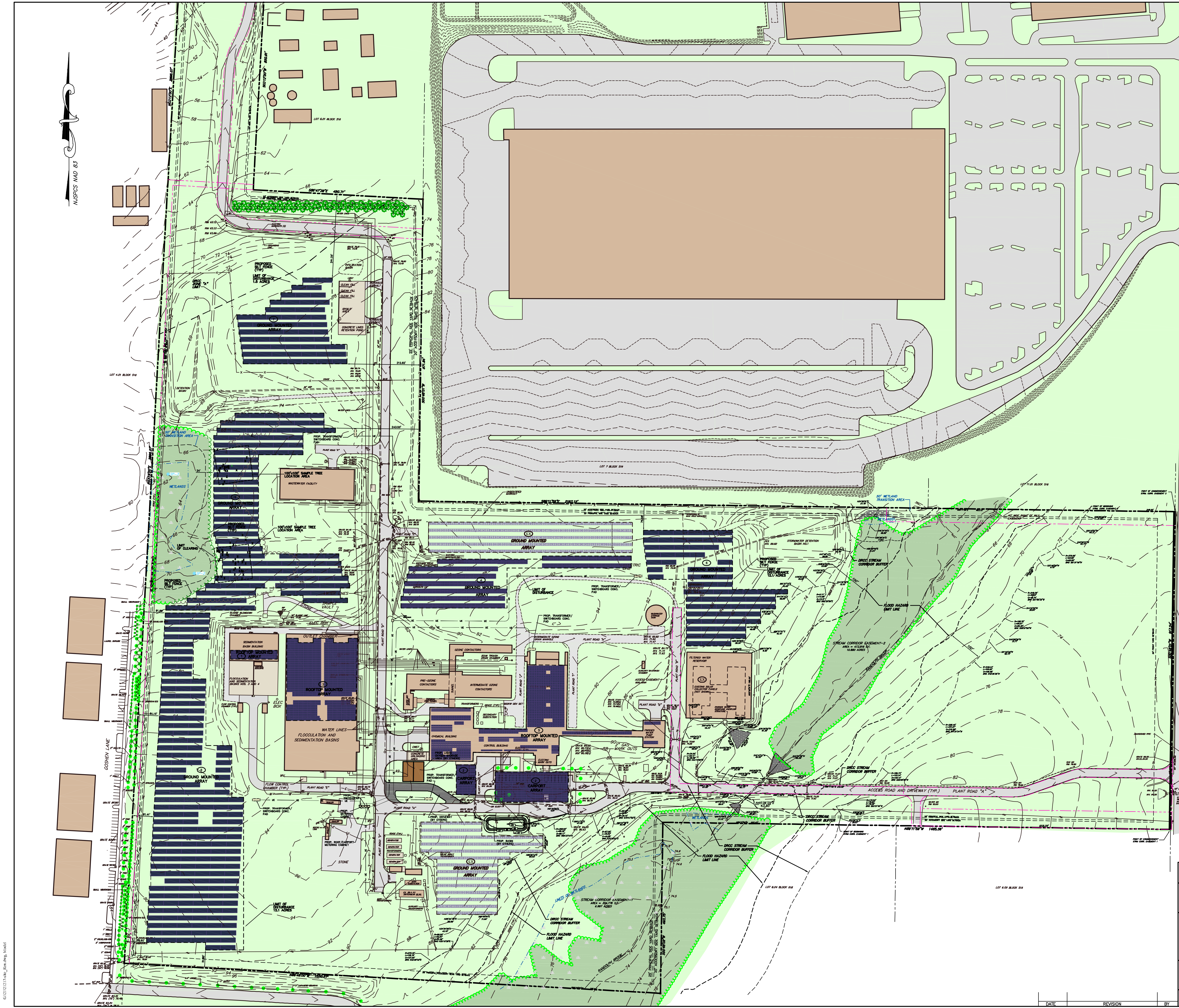


SITE PLAN

NEW JERSEY AMERICAN WATER SOLAR ARRAY PROJECT
 LOT 6.02 BLOCK 516.01
 FRANKLIN TOWNSHIP SOMERSET COUNTY NEW JERSEY

STIRES ASSOCIATES, P.A.
 ENGINEERS, SURVEYORS & ENVIRONMENTAL CONSULTANTS
 43 West High Street, Somerville, New Jersey 08876
 Phone (908) 725-0250 Fax (908) 707-0831

CRAIG W. STIRES PROFESSIONAL ENGINEER	N.J. LICENSE No. 39078	DESIGNED BY: CWS
DATE: 07/15/21	SCALE: 1" = 100'	DRAWN BY: RRM
	PROJECT No. 21217	CHECKED BY: CWS
		SHEET NUMBER
		1 OF 1



CONSULTING ENGINEERS, INC.