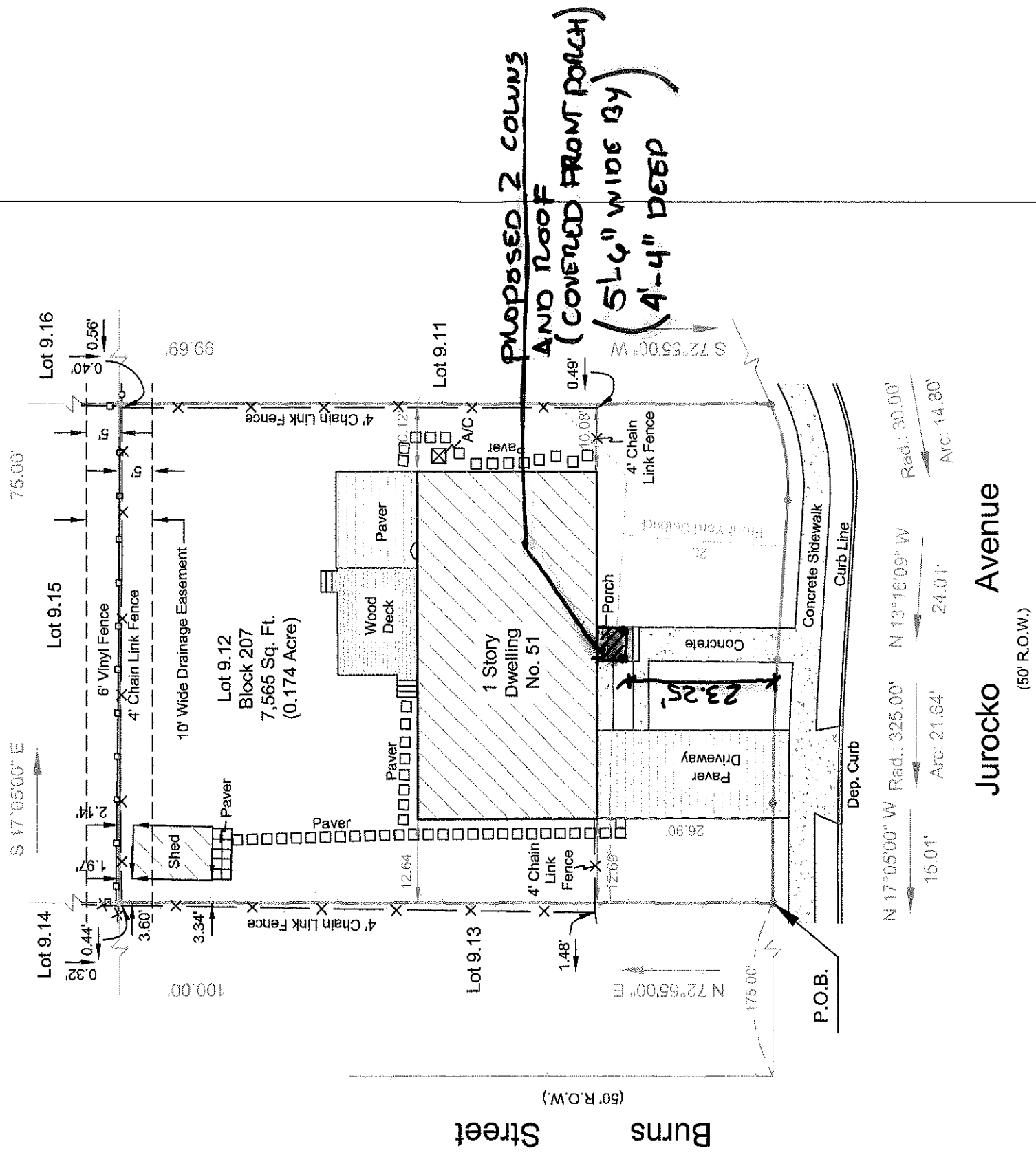


References:

Deed: Book 7271, Page 926.

Filed Map: BEING known and designated as Lot 9.12 in Block 207 on a certain map entitled "Map of Michelle Manor, Block 207", situated in Franklin Township, Somerset County, New Jersey, which map was filed in the Somerset County Clerk's Office on July 18, 1979 as Map No. 1817.

Tax Map: Being known as Lot 9.12 in Block 207 on the Tax Map of Franklin Township, Somerset County, New Jersey.



FILE

RECEIVED
AUG 24 2021
By _____

Notes:
 If this document does not contain a raised impression seal of the professional, it is not an authorized original document and may be altered.
 A written waiver & direction not to set corner markers has been obtained from the ultimate user pursuant to N.J.A.C. 13:40-5.2

FORMOSA ENGINEERING INC.

168 U.S. Route 1
 EDISON, NJ 08817
 TEL: (732) 632 8087 FAX: (732) 964-3900
 E-mail: awformosacng@aol.com

PLAN OF SURVEY

51 Jurocko Avenue, Somerset
 Lot 9.12 in Block 207
 Township of Franklin
 Somerset County, New Jersey

ANDREW K. WU, P.E. AND P.L.S.
 PROFESSIONAL ENGINEER AND
 PROFESSIONAL LAND SURVEYOR
 NEW JERSEY LICENSE NO. GB34581

DRAWN RAY

APP. A. WU

SCALE 1"=20'

DATE 6/10/2021

PROJ. NO. 27021