

PLANTING SCHEDULE (INCLUDES STREET TREES ALONG S. MIDDLEBUSH ROAD)

KEY	QTY.	BOTANICAL NAME	COMMON NAME	SIZE	ROOT	SPACING
<b>SHADE TREES</b>						
Af	11	Acer x freemanii 'Jeffersred'	Autumn Blaze Maple	2.5-3" Cal.	B&B	As Shown
Ar	15	Acer rubrum	Red Maple	2.5-3" Cal.	B&B	As Shown
As	11	Acer saccharum	Green Mountain Sugar Maple	2.5-3" Cal.	B&B	As Shown
Lt	15	Liriodendron tulipifera	Tulip Tree	2.5-3" Cal.	B&B	As Shown
Qp	16	Quercus phellos	Willow Oak	2.5-3" Cal.	B&B	As Shown
<b>ORNAMENTAL TREES</b>						
Aa	3	Amelanchier arborea	Shadblow Serviceberry	6-8' Ht. (2.5 Cal.)	B&B	As Shown
Cc	3	Cercis canadensis	Eastern Redbud	6-8' Ht. (2.5 Cal.)	B&B	As Shown
Cf	11	Cornus florida	Flowering Dogwood	6-8' Ht. (2.5 Cal.)	B&B	As Shown
<b>EVERGREEN TREES</b>						
Ac	43	Abies concolor	White Fir	8' Ht. (MIN.)	B&B	20' oc
Io	48	Ilex opaca	American Holly	8' Ht. (MIN.)	B&B	As Shown
Mg	1	Metasequoia glyptostroboides	Down Redwood	8' Ht. (MIN.)	B&B	As Shown
Pa	61	Picea abies	Norway Spruce	8' Ht. (MIN.)	B&B	As Shown
<b>SHRUBS</b>						
Vr	52	Viburnum x rhytidophyllum	Leatherleaf Viburnum	18-24"	#3 Cont.	4' oc
<b>GROUND COVER</b>						
Lm	90	Liriope muscari "Big Blue"	Big Blue Lilyturf	1 Gal.	Cont.	18" o.c.

ANY PLANT RELOCATIONS / SUBSTITUTIONS SHALL BE SUBMITTED TO THE TOWNSHIP FOR REVIEW AND APPROVAL PRIOR TO INSTALLATION.

SIGN PLANTING SCHEDULE

KEY	QTY.	BOTANICAL NAME	COMMON NAME	SIZE	ROOT	SPACING
<b>EVERGREEN TREES</b>						
Ia	2	Ilex x aquipernyi	Dragon Lady Holly	4-5' Ht.	B&B	As Shown
<b>DECIDUOUS SHRUBS</b>						
Pf	12	Potentilla fruticosa	Bush Cinquefoil "Tangerine"	18-24"	#3 Cont.	2' oc
<b>GROUND COVER</b>						
Lm	50	Liriope muscari "Big Blue"	Big Blue Lilyturf	1 Gal.	Cont.	18" o.c.
Ps	12	Phlox subulata	Creeping Phlox	1 Gal.	Cont.	18" o.c.

SHADE TOLERANT HERBACIOUS SEED MIX

COVERAGE RATE = 11 LBS./ACRE

SCIENTIFIC NAME	COMMON NAME	% OF MIX	OZ.
ANDROPOGON GERARDII	BIG BLUESTEM	10%	2.84
ELIMUS VIRGINICUS	VIRGINIA WILD RYE	10%	6.18
SCITACHYRIUM SCOPARIUM	LITTLE BLUESTEM	8%	1.31
ECHINACEA PURPUREA	PURPLE CONEFLOWER	7%	2.28
PANICUM VIRGATUM	VIRGINIA SWITCHGRASS	6%	0.54
ELYMUS VIRGINICUS	VIRGINIA WILD RYE	6%	2.8
SOLIDAGO CANADENSIS	CANADA GOLDENROD	6%	0.03
CHRYSOPSIS MARIANA	MARYLAND GOLDEN ASTER	5%	0.21
SORGHASTRUM NUTANS	INDIAN GRASS	5%	0.98
SYMPHYOTRICHUM NIOVAE-ANGLIAE	NEW ENGLAND ASTER	5%	0.08
CALAMAGROSTIS CANADENSIS	BLUEJOINT GRASS	4%	0.04
EUPATORIUM PURPUREUM	PURPLE JOE-PYE	4%	0.11
EURYPHA DIVARICATA	WHITE WOOD ASTER	4%	0.1
PENSTEMON DIGITALIS	FOXGLOVE BEARDTONGUE	4%	0.07
VERONICA VIRGINICUM	CULVER'S ROOT	4%	0.02
RUBROCKIA HIRTA	BLACK-EYED SUSAN	3%	0.09
SOLIDAGO NEMORALIS	GRAY GOLDENROD	3%	0.01
VERBENA HASTATA	BLUE VERVAIN	3%	0.07
VERBENA ALTERNIFOLIA	WINGSTEM	3%	0.92
EUPATORIUM COELESTINUM	BLUE MISTFLOWER	2%	0.01
LOBELIA SIPHILITICA	BLUE LOBELIA	2%	0.05
MONARDA FISTULOSA	WILD BERGAMOT	2%	0.05

FARM POLLINATION BUFFER MIX

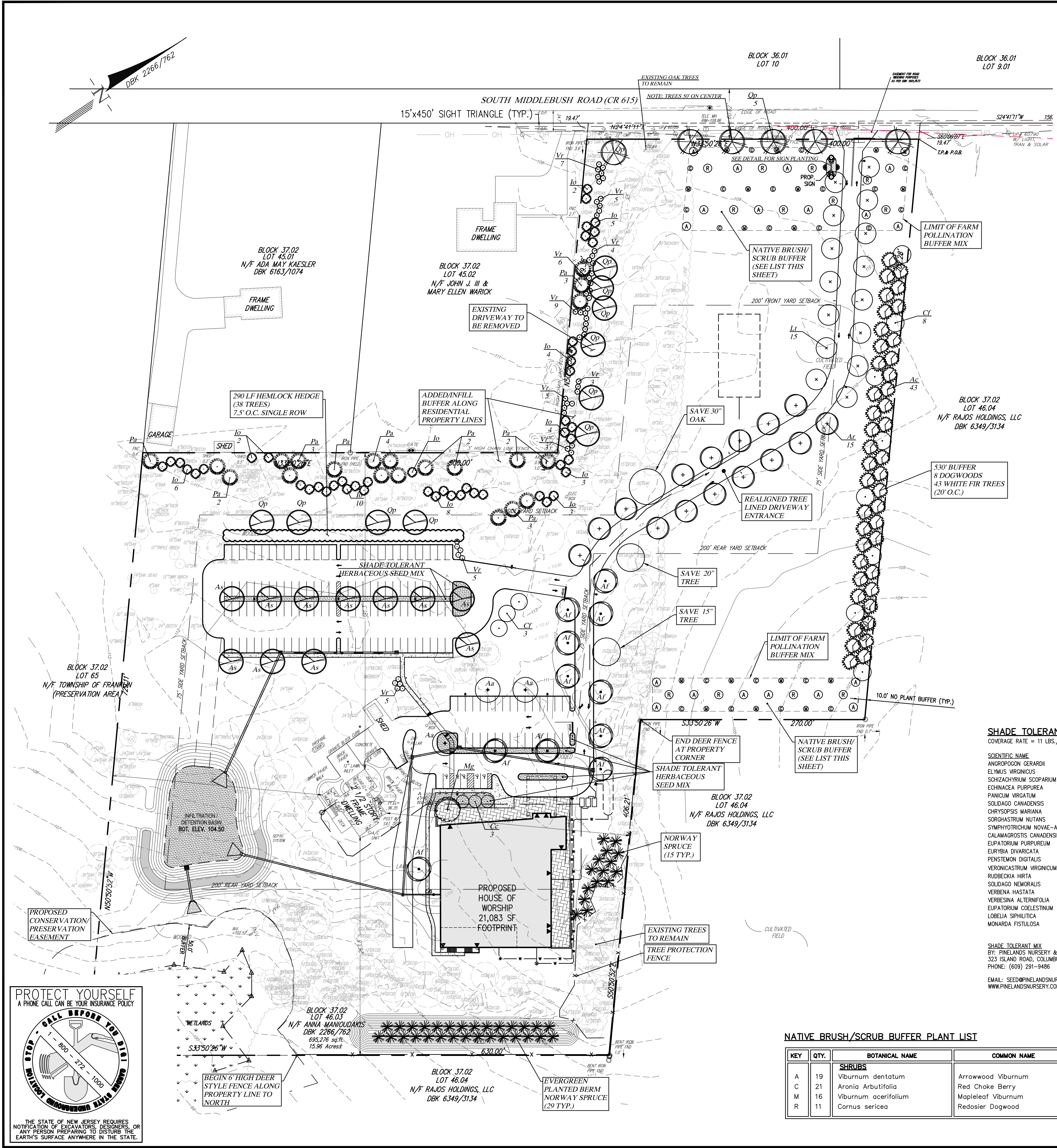
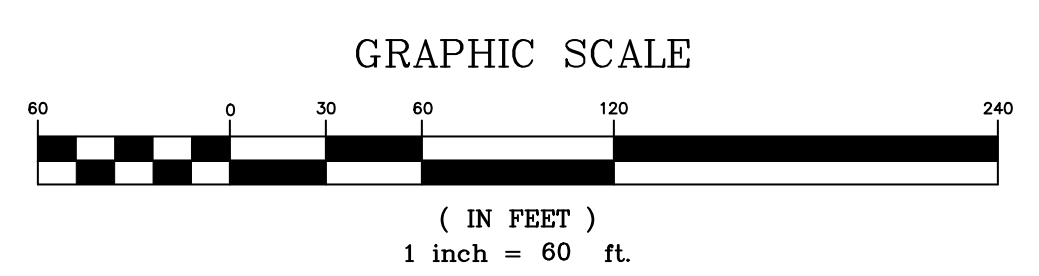
SCIENTIFIC NAME	COMMON NAME	% OF MIX	OZ.
ANDROPOGON GERARDII	BIG BLUESTEM	10%	2.14
SCITACHYRIUM SCOPARIUM	LITTLE BLUESTEM	10%	1.23
ECHINACEA PURPUREA	PURPLE CONEFLOWER	8%	1.97
ASCLEPIAS SYRIACA	COMMON MILKWEED	6%	1.7
ELYMUS VIRGINICUS	VIRGINIA WILD RYE	6%	2.8
HELIOPSIS HELIANTHODES	FALSE SUNFLOWER	6%	1.63
SOLIDAGO NEMORALIS	GRAY GOLDENROD	5%	0.02
SORGHASTRUM NUTANS	INDIAN GRASS	5%	0.74
MONARDA PUNCTATA	SPOTTED HORSEMINT	4%	0.07
PANICUM VIRGATUM	SWITCHGRASS	4%	0.27
TRIDENS FLAVUS	PURPLETOP	4%	0.29
VERBENA ALTERNIFOLIA	WINGSTEM	4%	0.93
COREOPSIS LANCEOLATA	LANCELEAF TICKSEED	3%	0.34
EUTHAMIA GRAMINIFOLIA	FLAT-TOP GOLDENROD	3%	0.01
LIATRIS SPICATA	DENSE BLAZING STAR	3%	0.82
SYMPHYOTRICHUM LAEVE	SMOOTH ASTER	3%	0.11
GENOTHERA BIENNIS	EVENING PRIMROSE	2%	0.04
PENSTEMON DIGITALIS	FOXGLOVE BEARDTONGUE	2%	0.03
RUBROCKIA HIRTA	BLACK-EYED SUSAN	2%	0.05
SYMPHYOTRICHUM NIOVAE-ANGLIAE	NEW ENGLAND ASTER	2%	0.03
VERBENA HASTATA	BLUE VERVAIN	2%	0.04
AGASTACHE FOeniculum	ANISE HYSSOP	1%	0.02
CHAMAECRISTA FASOICULATA	PARTRIDGE PEA	1%	0.56
PENSTEMON HIRSUTUS	HAIRY BEARDTONGUE	1%	0.01
VERNONIA NOVEBORACENSIS	NEW YORK IRONWEED	1%	0.05

SHADE TOLERANT MIX  
BY: PINELANDS NURSERY & SUPPLY  
323 ISLAND ROAD, COLUMBUS, NJ 08022  
PHONE: (609) 291-9486  
EMAIL: SEED@PINELANDSNURSERY.COM  
WWW.PINELANDSNURSERY.COM

AS PROVIDED BY: PINELANDS NURSERY & SUPPLY  
323 ISLAND ROAD  
COLUMBUS, NEW JERSEY 08022  
PH: 609-291-9486  
WWW.PINELANDSNURSERY.COM  
EMAIL: SEED@PINELANDSNURSERY.COM

NATIVE BRUSH/SCRUB BUFFER PLANT LIST

KEY	QTY.	BOTANICAL NAME	COMMON NAME	SIZE	ROOT	SPACING
<b>SHRUBS</b>						
A	19	Viburnum dentatum	Arrowwood Viburnum	3-4' Ht.	Cont.	As Shown
C	21	Aronia Arbutifolia	Red Choke Berry	2.5-3' Ht.	Cont.	As Shown
M	16	Viburnum acerifolium	Mapleleaf Viburnum	2-3' Ht.	Cont.	As Shown
R	11	Cornus sericea	Redosier Dogwood	2-3' Ht.	Cont.	As Shown



revisions

no.	date	description
1	11/05/19	COMPLETENESS REVIEW
2	04/07/20	PER SCD COMMENTS AND TOWNSHIP STAFF REVIEW
3	09/01/21	PER BOARD AND NEIGHBOR COMMENTS

LEGEND

- ⊕ GAS VALVE
- ⊕ GAS METER
- ⊕ WATER VALVE
- ⊕ HYDRANT
- ⊕ WATER METER
- ⊕ CURB STOP
- ⊕ DRAINAGE MH
- ⊕ CURB INLET
- ⊕ LAWN INLET
- ⊕ SANITARY MH
- ⊕ CLEANOUT
- ⊕ BOLLARD
- ⊕ SIGN
- ⊕ LIGHT
- ⊕ MAIL BOX
- ⊕ GUY WIRE
- ⊕ UTILITY POLE
- ⊕ ELECTRIC MH
- ⊕ CONIFEROUS TREE
- ⊕ DECIDUOUS TREE
- x — FENCE
- ⊕ GATE POST
- W — WATER LINE
- G — GAS LINE
- E — ELECTRIC LINE
- S — SANITARY LINE
- OH — OVERHEAD WIRES

**R** Engineers  
Landscape Architects  
Land Surveyors  
Planners  
575 Route 28, Suite 110  
Raritan, N.J. 08869  
908-722-1500  
Fax 908-722-7035  
www.reynoldsgrp.com

**The Reynolds Group Inc.**  
State of New Jersey  
Certificate of Authorization  
Number 24GAZ7969200  
21MH0004300  
F. Mitchel Ardman, P.E., P.P.  
Jeffrey D. Reynolds, P.L.A.

**Jeffrey D. Reynolds**  
JEFFREY D. REYNOLDS  
N.J. LICENSED LANDSCAPE ARCHITECT AS000878

project  
**DADA BHAGWAN VIGNAN INSTITUTE (DBVI)**  
BLOCK 37.02, LOT 46.03  
TOWNSHIP OF FRANKLIN  
SOMERSET COUNTY, NEW JERSEY  
drawing title  
**LANDSCAPE PLAN**

job number 14-001 drawing number  
scale 1"=60'  
checked by FMA  
drawn by A.A./GH  
date 10/17/2019 sheet 6 of 14

**PROTECT YOURSELF**  
A PHONE CALL CAN BE YOUR INSURANCE POLICY  
CALL BEFORE YOU DIAL  
800-272-1000  
THE STATE OF NEW JERSEY REQUIRES NOTIFICATION OF EXCAVATORS, DESIGNERS OR ANY PERSON PREPARING TO DISTURB THE EARTH'S SURFACE ANYWHERE IN THE STATE.