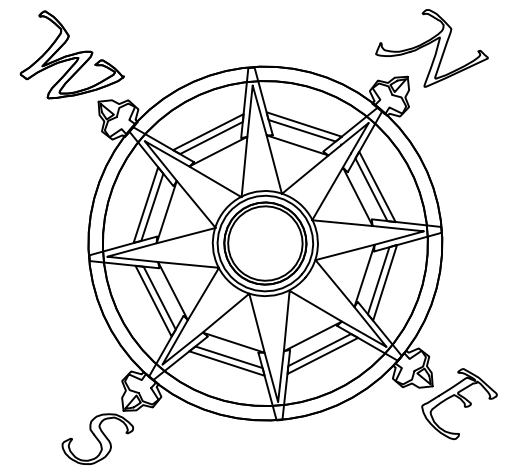


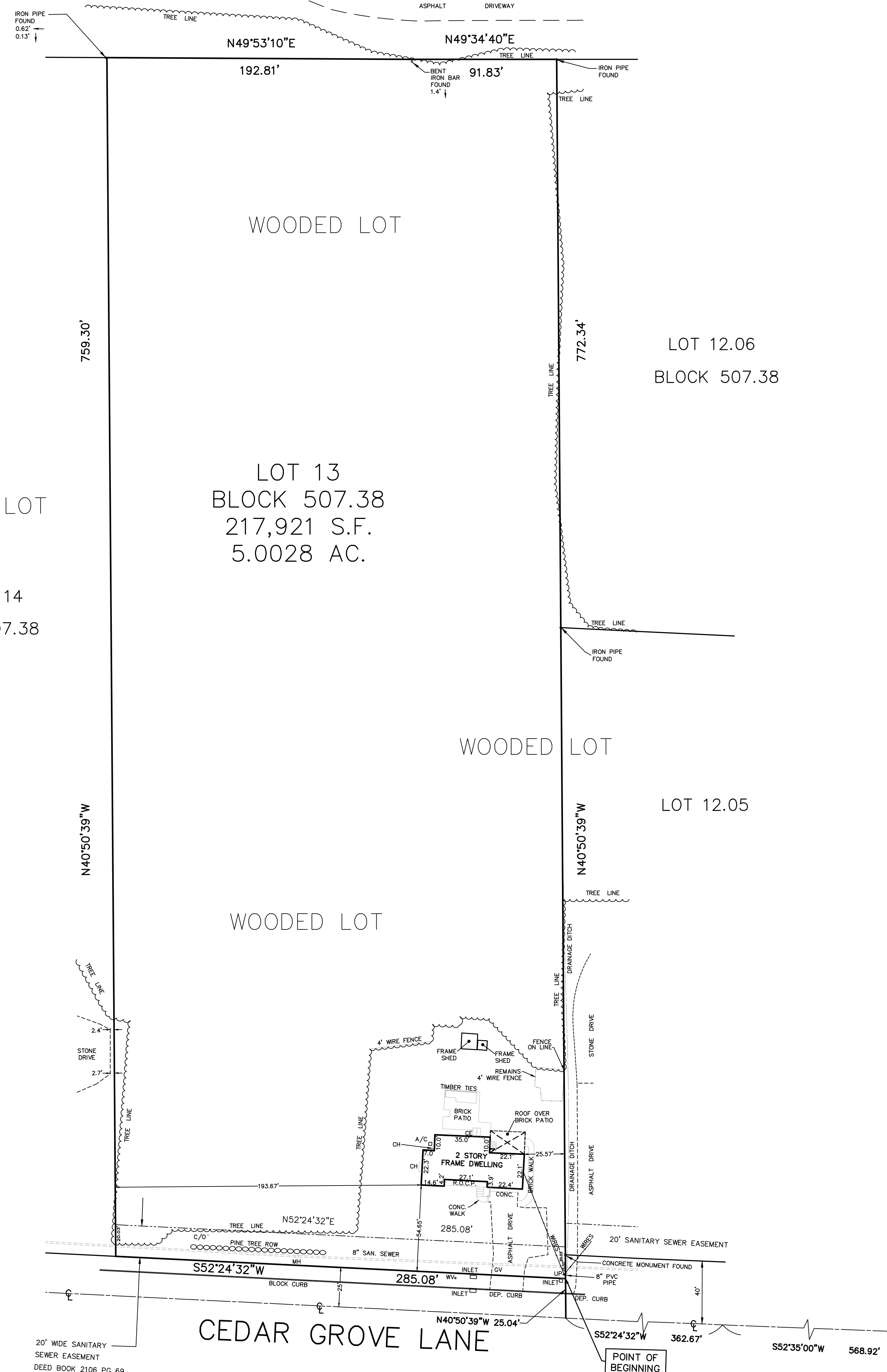
A WRITTEN WAIVER AND DIRECTION NOT TO SET CORNER MARKERS HAS BEEN OBTAINED FROM THE ULTIMATE USER PURSUANT TO P.L.2003,c.14 (N.J.S.A. C45:8-36.3) AND N.J.A.C. 13:40-5.1(d)



MERIDIAN BASED ON DEED BOOK 1673 PAGE 830

RECORD DEED DEED BOOK 7006 PAGE 3408

BLOCK 507.17 LOT 173



**LEGEND**

- A/C = AIR CONDITIONER
- C/O = SEWER CLEANOUT
- CE = CELLAR ENTRANCE
- CH = CHIMNEY
- CONC. = CONCRETE
- DEP. CURB = DEPRESSED CURB
- GV = GAS VALVE
- MH = MANHOLE
- POR. = PORCH
- R.O.C.P. = ROOF OVER CONCRETE PORCH
- UP = UTILITY POLE
- WV = WATER VALVE

CENTERLINE OF NEW BRUSWICK ROAD

**FISK ASSOCIATES, P.A.**  
 ENGINEERS - SURVEYORS - PLANNERS  
 631 UNION AVENUE  
 MIDDLESEX, NEW JERSEY 08846  
 Phone: 732-356-9322 Fax: 732-356-6015  
 FISKASSOCIATES@AOL.COM  
*Stephen M. Fisk* 05/10/2018  
**STEPHEN M. FISK, L.S., LIC.# 23919**  
**ROBERT GAZZALE, P.E., L.S., LIC# 35363**  
 L.S. - NEW JERSEY PROFESSIONAL LAND SURVEYOR  
 P.E. - NEW JERSEY PROFESSIONAL ENGINEER

**MAP OF SURVEY**  
 161 CEDAR GROVE LANE  
 LOT 13 BLOCK 507.38  
 TOWNSHIP OF FRANKLIN  
 SOMERSET COUNTY ~ NEW JERSEY

REVISIONS  
 SCALE: 1" = 40' FB/PG: 632/51 JOB#: DRAWN BY: EAST FR-5821 SHEET: 1

20' WIDE SANITARY SEWER EASEMENT DEED BOOK 2106 PG 69

POINT OF BEGINNING