

F:\job\1509FS\GIS\Hydrology\Drainage AREA MAPS 2-15-22.dwg

IRVINGTON AVENUE 40 FT. R.O.W.

EX. EDGE OF PAVEMENT

EX. FIRE HYDRANT

EX. PLUG

EX. E.P.

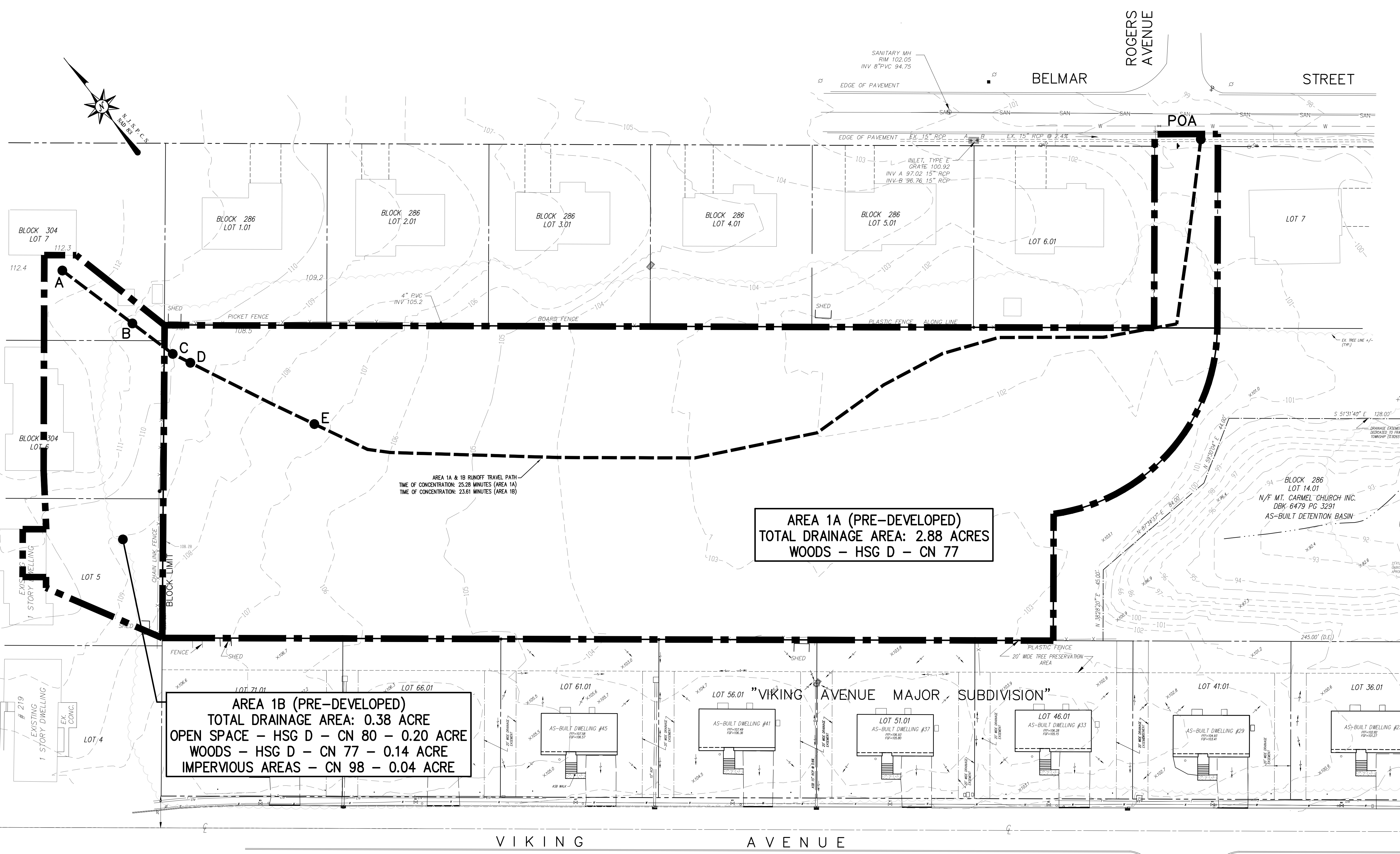
EX. E.P.

EX. E.P.

EX. E.P.

EX. E.P.

EX. E.P.



BLOCK 304 LOT 7

BLOCK 304 LOT 6

BLOCK 286 LOT 1.01

BLOCK 286 LOT 2.01

BLOCK 286 LOT 3.01

BLOCK 286 LOT 4.01

BLOCK 286 LOT 5.01

LOT 7

LOT 5

LOT 4

LOT 71.01

LOT 66.01

LOT 61.01

LOT 56.01

LOT 51.01

LOT 46.01

LOT 41.01

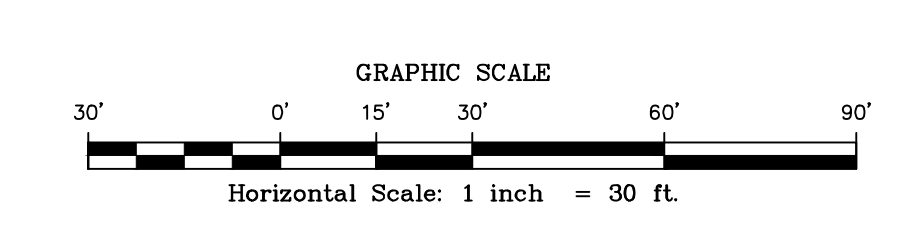
LOT 36.01

AREA 1B (PRE-DEVELOPED)
TOTAL DRAINAGE AREA: 0.38 ACRE
 OPEN SPACE - HSG D - CN 80 - 0.20 ACRE
 WOODS - HSG D - CN 77 - 0.14 ACRE
 IMPERVIOUS AREAS - CN 98 - 0.04 ACRE

AREA 1A (PRE-DEVELOPED)
TOTAL DRAINAGE AREA: 2.88 ACRES
 WOODS - HSG D - CN 77

AREA 1A & 1B RUNOFF TRAVEL PATH
 TIME OF CONCENTRATION: 25.28 MINUTES (AREA 1A)
 TIME OF CONCENTRATION: 23.61 MINUTES (AREA 1B)

DATE:	DECEMBER 15, 2017
SCALE:	1" = 30'
DESIGNED BY:	M.K.F.
DRAWN BY:	A.B.
CHECKED BY:	M.K.F.
REVISIONS	AUTH. DATE JOB No. 15-09-FS
PER TOWNSHIP	M.K.F. 3/24/22
PER DRCC	M.K.F. 7/30/21



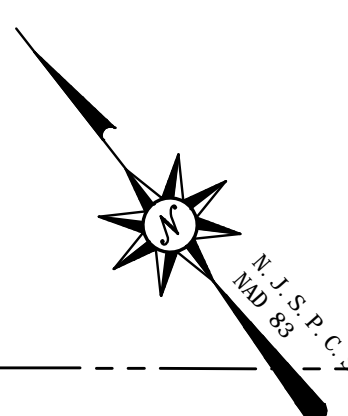
BY: *Michael K. Ford*
 Michael K. Ford
 New Jersey Professional Engineer
 No. 34722

Van Cleef
 ENGINEERING ASSOCIATES

Consulting Civil Engineering
 Environmental Engineering
 Municipal Engineering
 Land Surveying
 Professional Planning
 Landscape Architecture

32 BROWER LANE, PO BOX 5877, HILLSBOROUGH, NJ 08844
 EMAIL: VCCNJ@VCEA.ORG WEB: WWW.VCEA.ORG
 PHONE: (908) 268-8201 FAX: (908) 268-1590 NJ LLC CERT. No. 246A28132300

EXISTING DRAINAGE AREA MAP
 FOR
LOT 14.02 IN BLOCK 286
 SITUATED IN
 FRANKLIN TOWNSHIP,
 SOMERSET COUNTY, NEW JERSEY



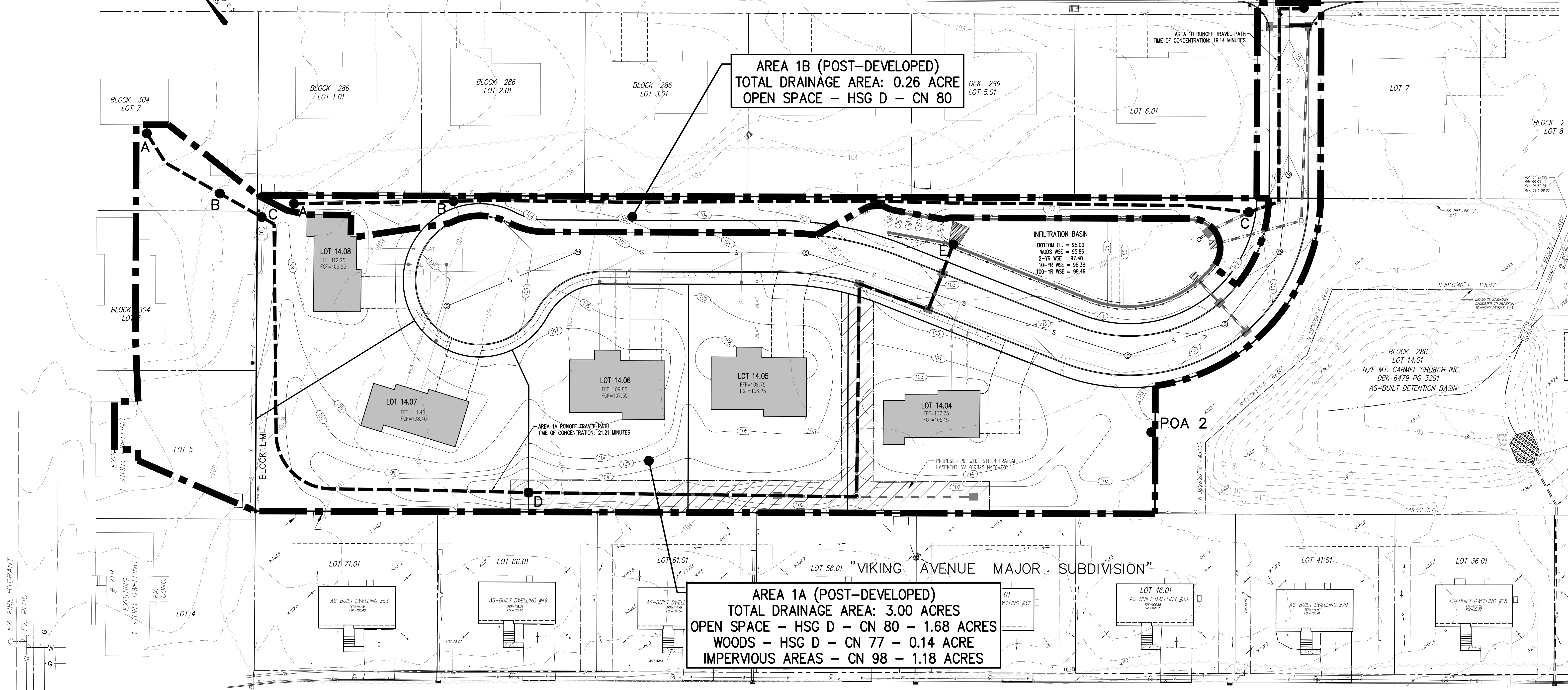
IRVINGTON AVENUE 40 FT. R.O.W.

BELMAR STREET

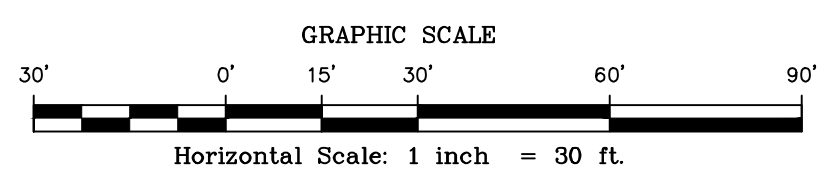
ROGERS AVENUE

AREA 1B (POST-DEVELOPED)
TOTAL DRAINAGE AREA: 0.26 ACRE
OPEN SPACE - HSG D - CN 80

AREA 1A (POST-DEVELOPED)
TOTAL DRAINAGE AREA: 3.00 ACRES
OPEN SPACE - HSG D - CN 80 - 1.68 ACRES
WOODS - HSG D - CN 77 - 0.14 ACRE
IMPERVIOUS AREAS - CN 98 - 1.18 ACRES



EX. EDGE OF PAVEMENT
 EX. FIRE HYDRANT
 EX. PLUG
 EX. E.P.



DATE:	DECEMBER 15, 2017
SCALE:	1" = 30'
DESIGNED BY:	M.K.F.
DRAWN BY:	A.B.
CHECKED BY:	M.K.F.
PER TOWNSHIP	M.K.F. 3/24/22
PER DRCC	M.K.F. 7/30/21
REVISIONS	AUTH. DATE JOB No. 15-09-FS

Van Cleef
ENGINEERING ASSOCIATES

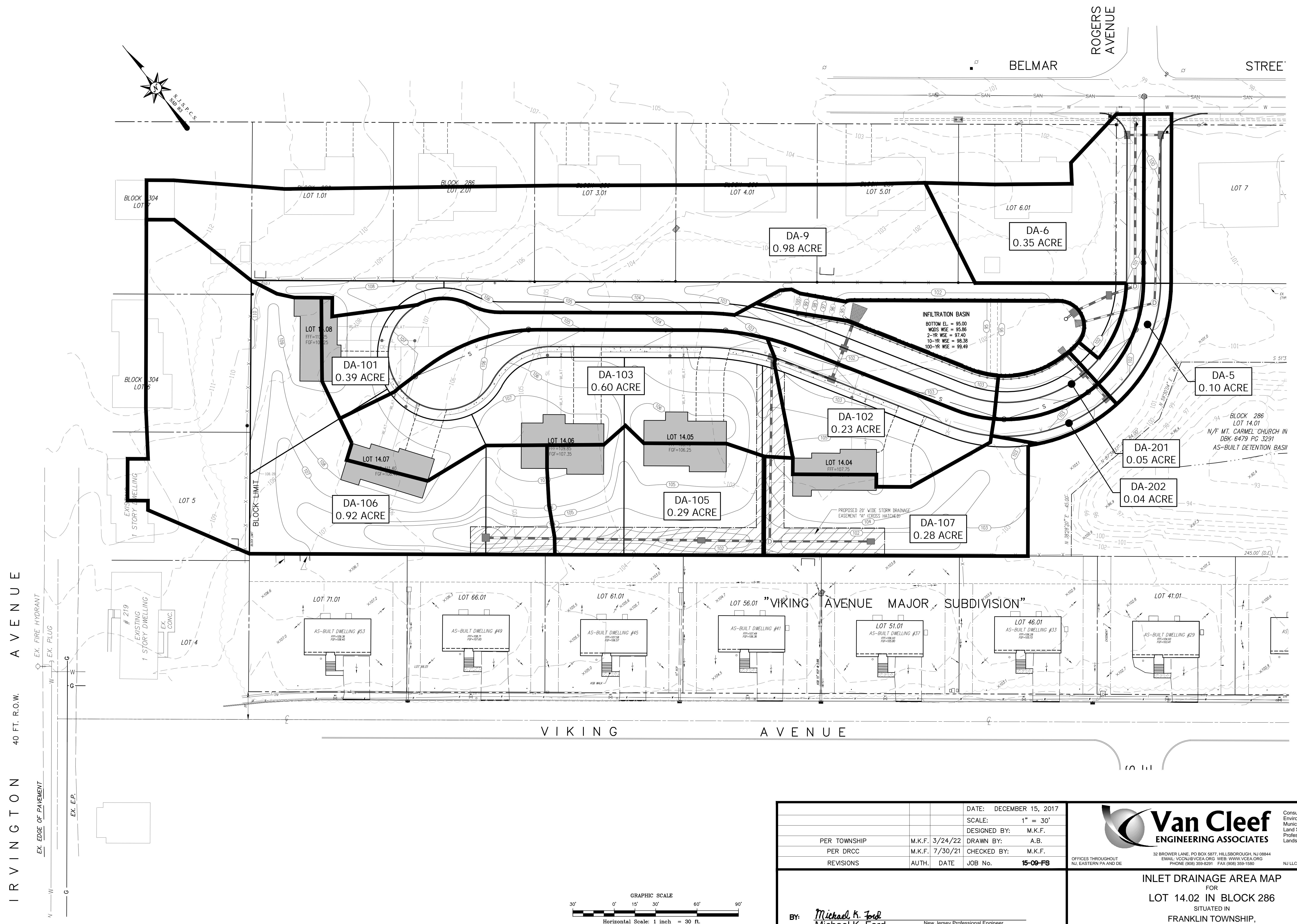
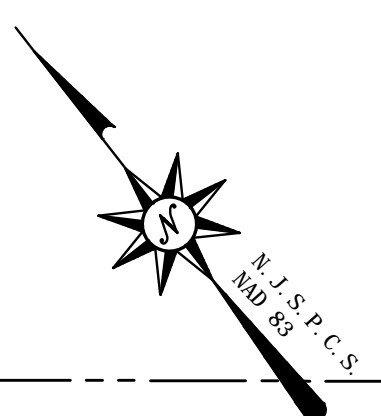
Consulting Civil Engineering
 Environmental Engineering
 Municipal Engineering
 Land Surveying
 Professional Planning
 Landscape Architecture

32 BROWER LANE, PO BOX 6877, HILLSBOROUGH, NJ 08844
 EMAIL: VCCNJ@VCEA.ORG WEB: WWW.VCEA.ORG
 PHONE: (908) 359-8291 FAX: (908) 359-1580 NJ LLC CERT. No. 24GA28132300

OFFICES THROUGHOUT NJ, EASTERN PA AND DE

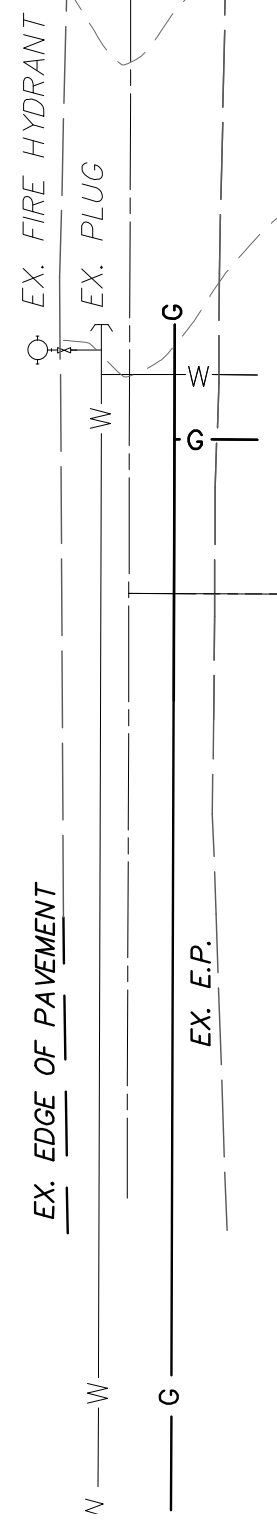
BY: *Michael K. Ford*
 Michael K. Ford
 New Jersey Professional Engineer
 No. 34722

PROPOSED CONDITIONS DRAINAGE AREA MAP
 FOR
LOT 14.02 IN BLOCK 286
 SITUATED IN
 FRANKLIN TOWNSHIP,
 SOMERSET COUNTY, NEW JERSEY



F:\job\1509FS\GIS\Hydrology\Drainage AREA MAPS 2-15-22.dwg

IRVINGTON AVENUE 40 FT. R.O.W.

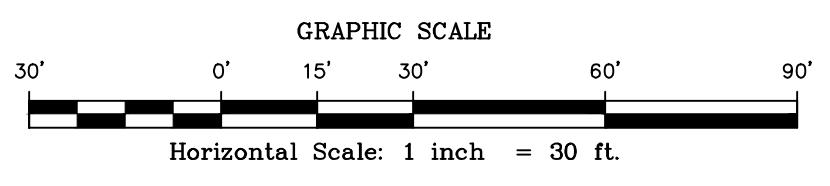


VIKING AVENUE

BELMAR STREET

ROGERS AVENUE

STREET



DATE:	DECEMBER 15, 2017
SCALE:	1" = 30'
DESIGNED BY:	M.K.F.
DRAWN BY:	A.B.
CHECKED BY:	M.K.F.
REVISIONS	AUTH. DATE JOB No. 15-09-FS
PER TOWNSHIP	M.K.F. 3/24/22
PER DRCC	M.K.F. 7/30/21

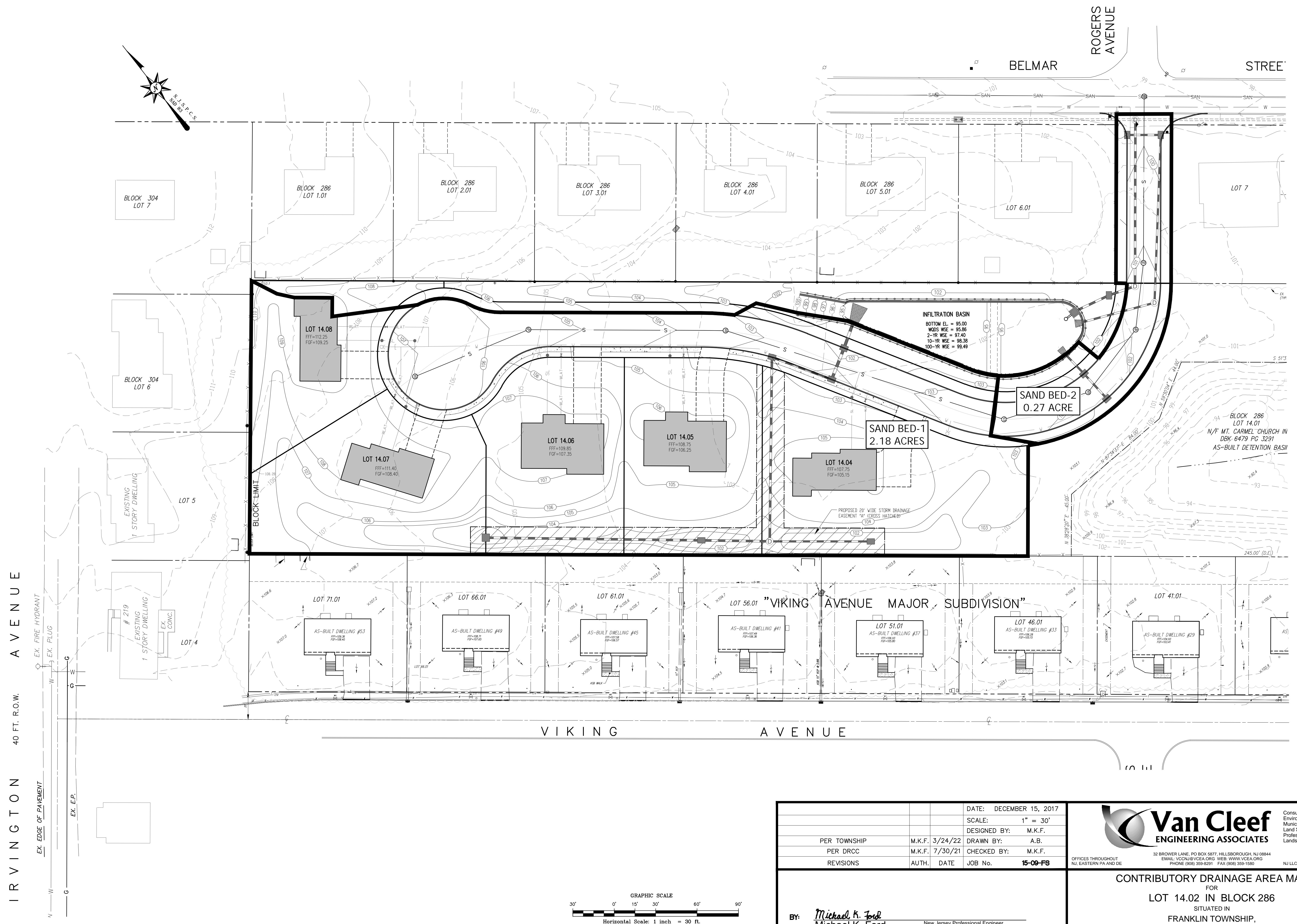
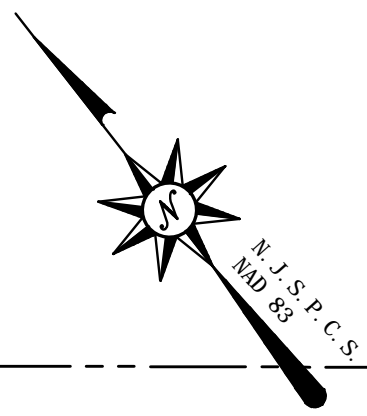
BY: *Michael K. Ford*
Michael K. Ford
New Jersey Professional Engineer
No. 34722

Van Cleaf
ENGINEERING ASSOCIATES

Consulting Civil Engineering
Environmental Engineering
Municipal Engineering
Land Surveying
Professional Planning
Landscape Architecture

32 BROWER LANE, PO BOX 5877, HILLSBOROUGH, NJ 08844
EMAIL: VCCNJ@VCEA.ORG WEB: WWW.VCEA.ORG
PHONE: (908) 359-8201 FAX: (908) 359-1590 NJ LLC CERT. No. 24GA28132300

INLET DRAINAGE AREA MAP
FOR
LOT 14.02 IN BLOCK 286
SITUATED IN
FRANKLIN TOWNSHIP,
SOMERSET COUNTY, NEW JERSEY



INFILTRATION BASIN
 BOTTOM EL. = 95.00
 WDS WSE = 95.86
 2-YR WSE = 97.40
 10-YR WSE = 98.38
 100-YR WSE = 99.49

SAND BED-2
 0.27 ACRE

SAND BED-1
 2.18 ACRES

BLOCK 286
 LOT 14.01
 N/F MT. CARMEL CHURCH IN
 DBK. 6479 PG. 3291
 AS-BUILT DETENTION BASIN

"VIKING AVENUE MAJOR SUBDIVISION"

VIKING AVENUE

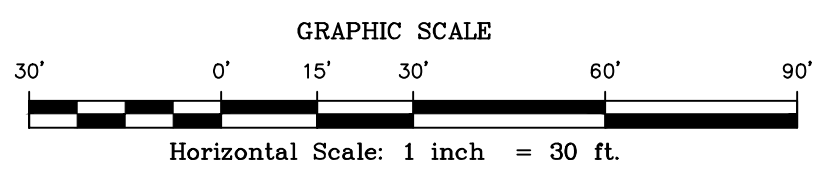
IRVINGTON AVENUE
 40 FT. R.O.W.

ROGERS AVENUE

BELMAR

STREET

F:\job\1509FS\ENGR\Hydrology\Drainage AREA MAPS 2-15-22.dwg



		DATE:	DECEMBER 15, 2017
		SCALE:	1" = 30'
PER TOWNSHIP	M.K.F.	3/24/22	DESIGNED BY: M.K.F.
PER DRCC	M.K.F.	7/30/21	CHECKED BY: M.K.F.
REVISIONS	AUTH.	DATE	JOB No. 15-09-FS

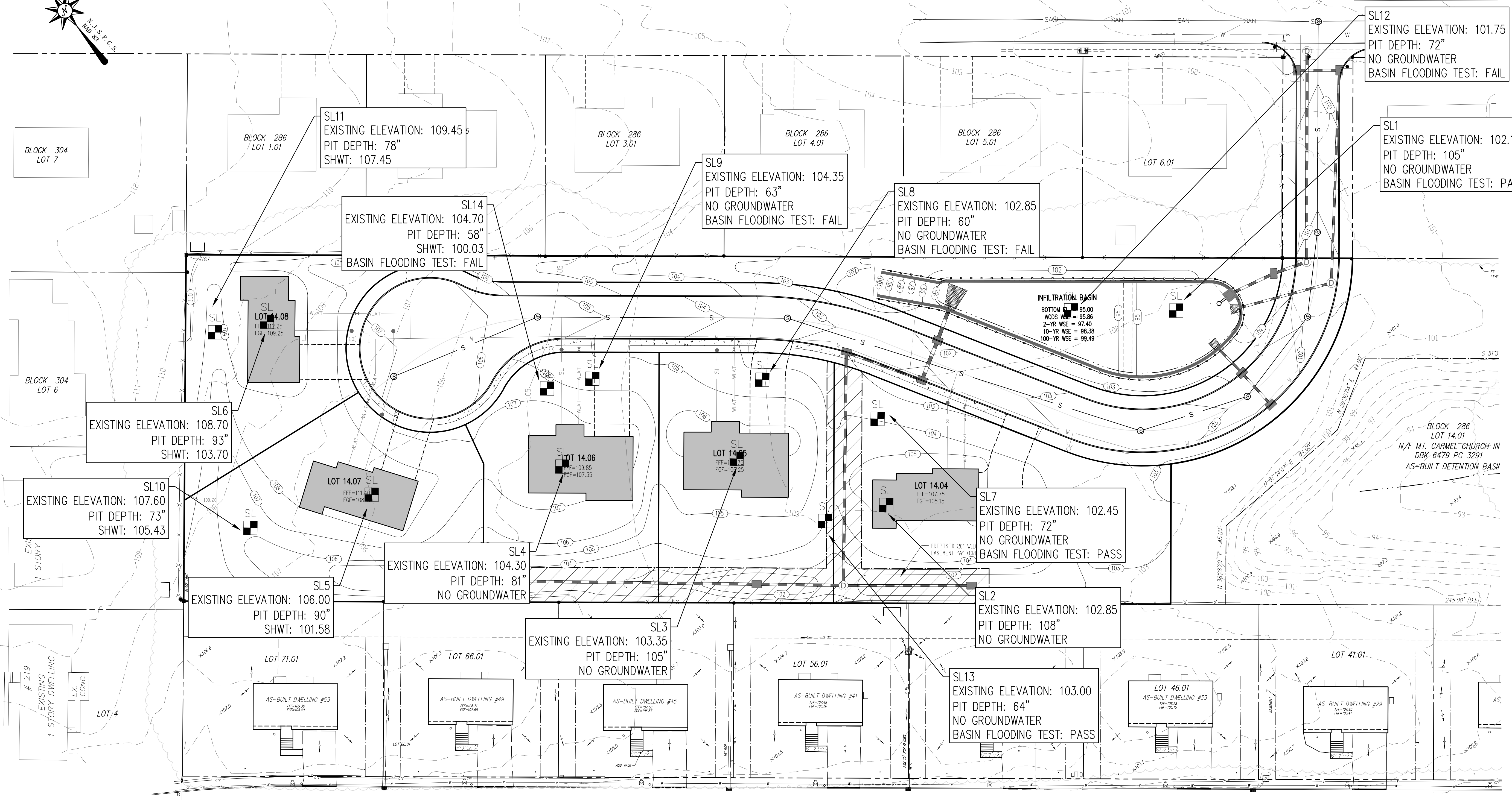
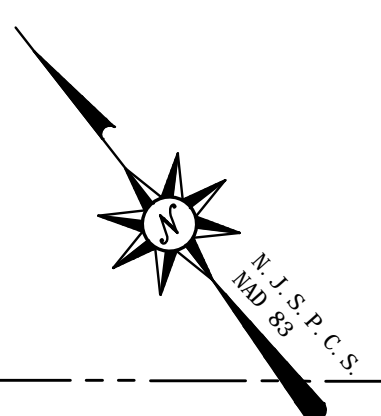
Van Cleaf
 ENGINEERING ASSOCIATES

Consulting Civil Engineering
 Environmental Engineering
 Municipal Engineering
 Land Surveying
 Professional Planning
 Landscape Architecture

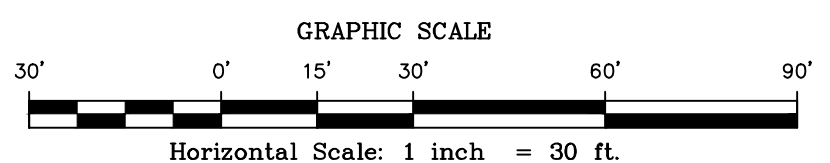
32 BROWER LANE, PO BOX 5877, HILLSBOROUGH, NJ 08844
 EMAIL: VCCNJ@VCEA.ORG WEB: WWW.VCEA.ORG
 PHONE: (908) 359-8201 FAX: (908) 359-1590 NJ LLC CERT. No. 24GA28132200

CONTRIBUTORY DRAINAGE AREA MAP
 FOR
 LOT 14.02 IN BLOCK 286
 SITUATED IN
 FRANKLIN TOWNSHIP,
 SOMERSET COUNTY, NEW JERSEY

BY: *Michael K. Ford*
 Michael K. Ford
 New Jersey Professional Engineer
 No. 34722



EX. FIRE HYDRANT
EX. PLUG
EX. E.P.
EX. EDGE OF PAVEMENT



		DATE: DECEMBER 15, 2017
		SCALE: 1" = 30'
PER TOWNSHIP	M.K.F. 3/24/22	DESIGNED BY: M.K.F.
PER DRCC	M.K.F. 7/30/21	DRAWN BY: A.B.
REVISIONS	AUTH. DATE	CHECKED BY: M.K.F.
		JOB No. 15-09-FS

Van Cleef
ENGINEERING ASSOCIATES

Consulting Civil Engineering
Environmental Engineering
Municipal Engineering
Land Surveying
Professional Planning
Landscape Architecture

32 BROWER LANE, PO BOX 5877, HILLSBOROUGH, NJ 08844
EMAIL: VCCNJ@VCEA.ORG WEB: WWW.VCEA.ORG
OFFICES THROUGHOUT NJ, EASTERN PA AND DE PHONE (908) 359-8201 FAX (908) 359-1590 NJ LLC CERT. No. 24GA28132200

BY: *Michael K. Ford*
Michael K. Ford
New Jersey Professional Engineer
No. 34722

SOIL LOG EXHIBIT
FOR
LOT 14.02 IN BLOCK 286
SITUATED IN
FRANKLIN TOWNSHIP,
SOMERSET COUNTY, NEW JERSEY