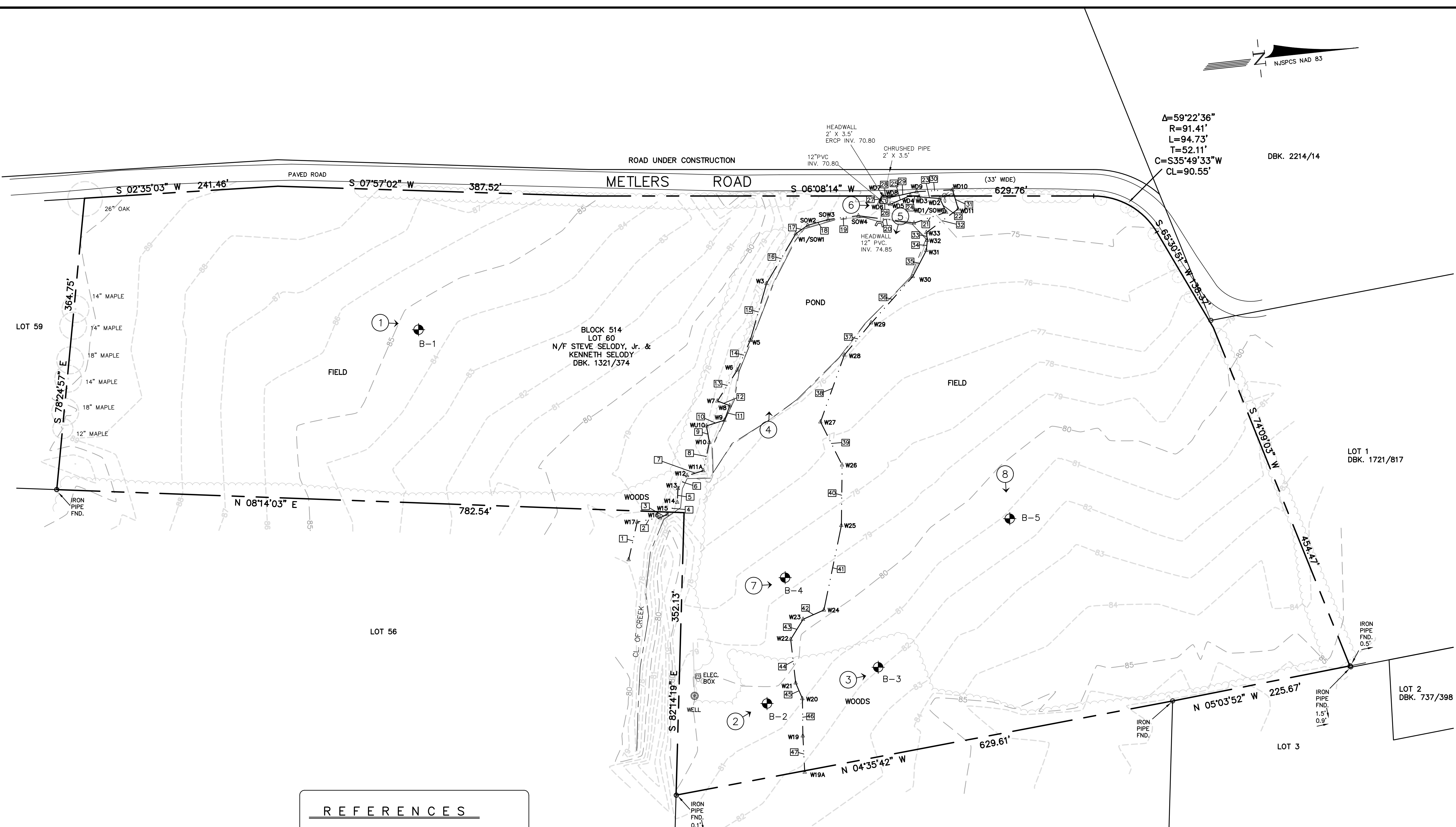


revisions		
no.	date	description
1	6/30/17	Wetland Revisions per NJDEP Field Inspection

**LEGEND**

- ⊕ GAS VALVE
- ⊕ GAS METER
- ⊕ WATER VALVE
- ⊕ HYDRANT
- ⊕ WATER METER
- ⊕ CURB STOP
- ⊕ DRAINAGE MH
- ⊕ CURB INLET
- ⊕ LAWN INLET
- ⊕ SANITARY MH
- ⊕ CLEANOUT
- ⊕ BOLLARD
- ⊕ SIGN
- ⊕ LIGHT
- ⊕ MAIL BOX
- ⊕ GUY WIRE
- ⊕ UTILITY POLE
- ⊕ ELECTRIC MH
- ⊕ CONIFEROUS TREE
- ⊕ DECIDUOUS TREE
- x — FENCE
- ⊕ GATE POST
- W — WATER LINE
- G — GAS LINE
- E — ELECTRIC LINE
- S — SANITARY LINE
- OH — OVERHEAD WIRES
- ⊕ B-5 WETLAND DATA SHEET LOC.
- ⊕ 6 PHOTOGRAPH LOC.
- ⊕ 18 WETLAND LINE SEGMENT

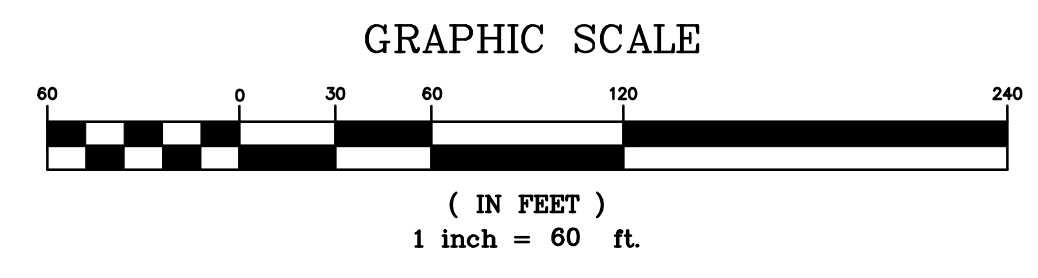


**NOTES**

- THIS SURVEY IS VALID ONLY WHEN EMBOSSED SEAL IS AFFIXED HERETO.
- THE CERTIFICATION SHOWN HEREON IS NOT TRANSFERABLE TO ADDITIONAL INSTITUTIONS OR SUBSEQUENT OWNERS.
- THE REYNOLDS GROUP, INC. AND/OR ITS EMPLOYEES ARE NOT LIABLE FOR ERRORS WITHIN, AND/OR OMISSIONS FROM ANY DOCUMENTS PROVIDED BY OTHERS.
- A WRITTEN WAIVER AND DIRECTION NOT TO SET CORNER MARKERS HAS BEEN OBTAINED FROM THE ULTIMATE USER PURSUANT TO P.L. 2003, c.14(C45:8-36.3) AND N.J.A.C. 13:40-5.1(d).
- HORIZONTAL DATUM IS NAD 83 (U.S. SURVEY FOOT) AND VERTICAL DATUM IS NAVD 88 (FEET).
- WETLAND DELINEATION, WETLAND DATA SHEET LOC. & PHOTOGRAPH LOC. BY ECOLSCIENCES, INC., FIELD LOCATED BY THE REYNOLDS GROUP, INC.

**REFERENCES**

- MAP ENTITLED "FINAL MAP, CANAL WALK, PHASE 1, TOWNSHIP OF FRANKLIN, SOMERSET COUNTY, NEW JERSEY, LOTS 1, 2, 4, 10, 11, 12.01, 13.01 & 15, BLOCK 513", PREPARED BY FISK ASSOCIATES, DATED SEPTEMBER 20, 1999, LAST REVISED 12/20/00 AND FIELD IN THE SOMERSET COUNTY CLERK'S OFFICE ON JAN. 8, 2001 AS MAP NO. 3548.
- MAP ENTITLED "SOMERSET COUNTY BOARD OF CHOSEN FREEHOLDERS, ENTIRE TRACT AND PROPERTY PARCEL MAPS FOR THE RECONSTRUCTION OF SCHOOLHOUSE ROAD FROM WESTON ROAD TO METLERS ROAD, LOCATED IN THE TOWNSHIP OF FRANKLIN, SOMERSET COUNTY, STATE OF NEW JERSEY", PREPARED BY THE REYNOLDS GROUP, INC., PREPARED JUNE OF 2000, SHEETS 1 THRU 14 OF 14.
- MAP ENTITLED "TOWNSHIP OF FRANKLIN ENTIRE TRACT AND PROPERTY PARCEL MAPS FOR THE RECONSTRUCTION OF SCHOOLHOUSE ROAD FROM METLERS ROAD TO RANDOLPH ROAD LOCATED IN THE TOWNSHIP OF FRANKLIN COUNTY OF SOMERSET STATE OF NEW JERSEY", PREPARED BY THE REYNOLDS GROUP, INC., DATED 8/2001, SHEETS 1 THRU 7 OF 7.
- TAX MAP, FRANKLIN TOWNSHIP, SOMERSET COUNTY, NEW JERSEY, SHEET 71.
- MAP ENTITLED "BOUNDARY SURVEY OF BLOCK 514, LOT 60, TOWNSHIP OF FRANKLIN, SOMERSET COUNTY, NEW JERSEY", PREPARED BY THE REYNOLDS GROUP, INC., DATED 1/14/04.



**RE** Engineers  
Landscape Architects  
Land Surveyors  
Planners  
626 N. Thompson Street  
Raritan, N.J. 08869  
908-722-1500  
Fax 908-722-7035  
www.REYNOLDSGRP.com

**The Reynolds Group Inc.**  
State of New Jersey  
Certificate of Authorization  
Number 24GA 27389200  
Number 21MH0004300  
Henry E. Reynolds Jr., P.L.S., P.P.  
F. Mitchel Armon, P.E., P.P.  
Jeffrey D. Reynolds, P.L.A.

DAVID C. COLEMAN, PLS  
PROFESSIONAL LAND SURVEYOR, N.J. No. GS35826

**WETLANDS MAP**

drawing title  
**BOUNDARY & TOPOGRAPHIC SURVEY**  
of  
**BLOCK 514, LOT 60**  
TOWNSHIP OF FRANKLIN  
SOMERSET COUNTY, NEW JERSEY

job number 02-039 METLERS	drawing number
scale 1"=60'	<b>B-1</b>
checked by JMH	
drawn by RJZ/JMCM	
date 1/14/04	sheet 1 of 1