



### EDA 3

TOTAL AREA: 0.771 ACRES  
>75% GRASS COVER, HSG C: 0.238 ACRES  
WOODS, HSG C: 0.533 ACRES

### EDA 1A

TOTAL AREA: 11.195 ACRES  
>75% GRASS COVER, HSG C: 3.058 ACRES  
WOODS, HSG C: 0.994 ACRES  
IMPERVIOUS COVERAGE: 7.143 ACRES

### EDA 2A

TOTAL AREA: 0.910 ACRES  
>75% GRASS COVER, HSG C: 0.660 ACRES  
IMPERVIOUS COVERAGE: 0.250 ACRES

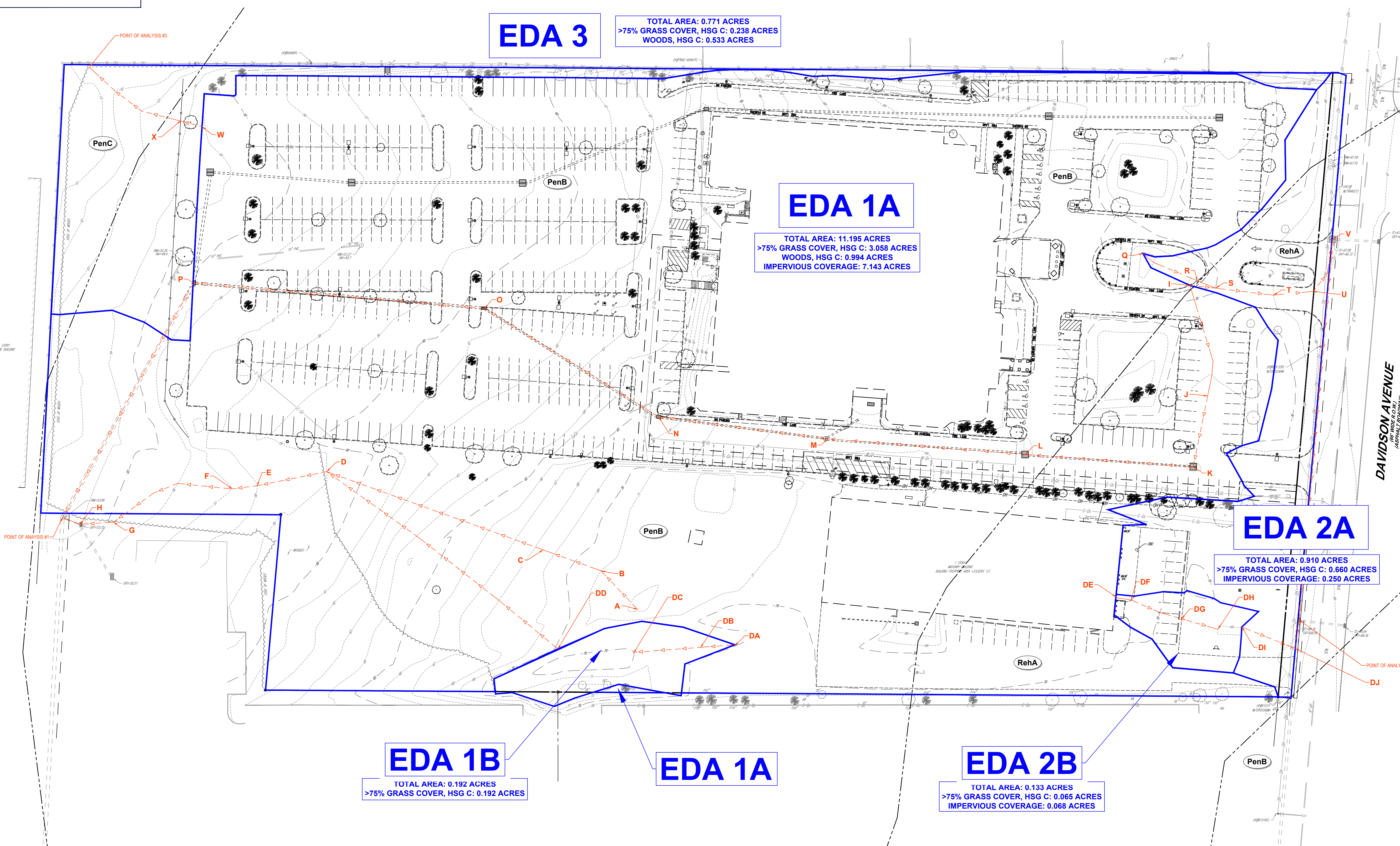
### EDA 1B

TOTAL AREA: 0.192 ACRES  
>75% GRASS COVER, HSG C: 0.192 ACRES

### EDA 1A

### EDA 2B

TOTAL AREA: 0.133 ACRES  
>75% GRASS COVER, HSG C: 0.065 ACRES  
IMPERVIOUS COVERAGE: 0.068 ACRES



**BOHLER**  
SITE CIVIL AND CONSULTING ENGINEERING  
PROGRAM MANAGEMENT  
LANDSCAPE ARCHITECTURE  
SUSTAINABLE DESIGN  
PERMITTING SERVICES  
TRANSPORTATION SERVICES

REVISIONS			
REV	DATE	COMMENT	DRAWN BY / CHECKED BY

**811**  
Know what's below.  
Call before you dig.  
NEW JERSEY  
YOU MUST CALL 811 BEFORE ANY EXCAVATION  
WHETHER IT'S ON PRIVATE OR PUBLIC LAND.  
1-800-272-1000  
www.nj-811.org

**FOR EXHIBIT PURPOSES ONLY**  
THIS DRAWING IS INTENDED FOR MUNICIPAL AND/OR AGENCY REVIEW AND APPROVAL. IT IS NOT INTENDED AS A CONSTRUCTION DOCUMENT UNLESS INDICATED OTHERWISE.

PROJECT No.: NJA220121  
DRAWN BY: ATK  
CHECKED BY: AS  
DATE: 12/28/2022  
CAD ID: NJA220121.00-X-TTLB-CPTB

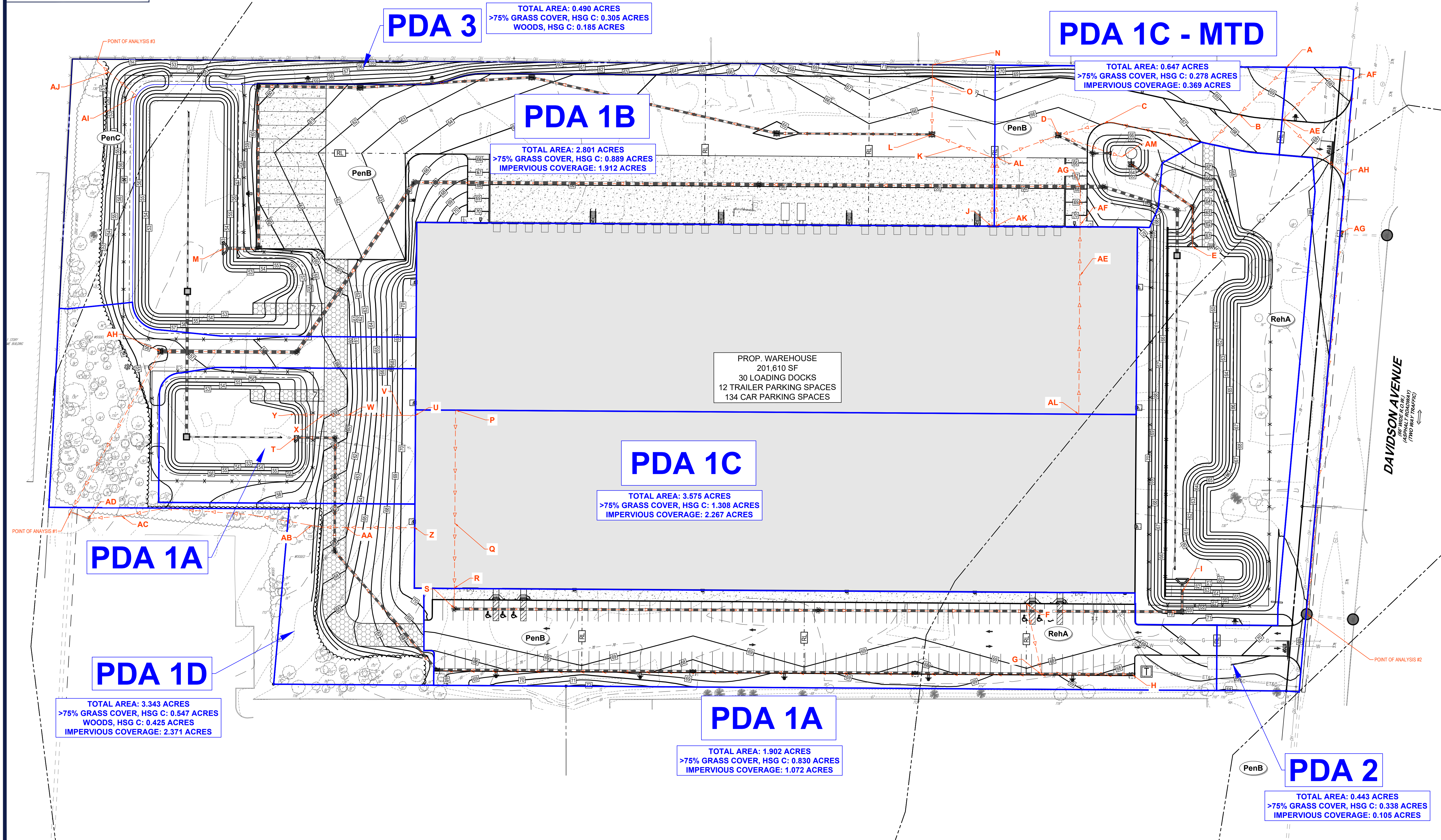
PROJECT:  
**DRAINAGE AREA MAPS**  
FOR  
**IDIL DAVIDSON, LLC**  
PROPOSED WAREHOUSE  
BLOCK: 502.02, LOTS: 37.01 & 38.01  
195-215 DAVIDSON AVENUE  
TOWNSHIP OF FRANKLIN  
SOMERSET COUNTY, NEW JERSEY

**BOHLER**  
BOHLER ENGINEERING NJ, LLC  
30 INDEPENDENCE BLVD., SUITE 200  
WARREN, NJ 07059  
Phone: (908) 665-6300  
Fax: (908) 724-4401  
www.BohlerEngineering.com  
NJ CERT. OF AUTHORIZATION No. 246A28161700 & M6000122

**B.A. BOHLER**  
PROFESSIONAL ENGINEER  
NEW JERSEY LICENSE No. 47421  
NEW YORK LICENSE No. 088514-1  
PENNSYLVANIA LICENSE No. 077366  
CONNECTICUT LICENSE No. 26039  
DELAWARE LICENSE No. 17111  
OHIO LICENSE No. 78297

SHEET TITLE:  
**EXISTING DRAINAGE AREA MAP**  
SHEET NUMBER:  
**C-01**  
ORG. DATE - 12/28/2022

G:\0222\NJA220121\00\CADD\DRAWINGS\PLAN SET\DRAINAGE MAPS\NJA220121.00-EDA1A.dwg - LAYOUT, C-01 (IDAM) AK



**PDA 3**  
 TOTAL AREA: 0.490 ACRES  
 >75% GRASS COVER, HSG C: 0.305 ACRES  
 WOODS, HSG C: 0.185 ACRES

**PDA 1C - MTD**  
 TOTAL AREA: 0.647 ACRES  
 >75% GRASS COVER, HSG C: 0.278 ACRES  
 IMPERVIOUS COVERAGE: 0.369 ACRES

**PDA 1B**  
 TOTAL AREA: 2.801 ACRES  
 >75% GRASS COVER, HSG C: 0.889 ACRES  
 IMPERVIOUS COVERAGE: 1.912 ACRES

PROP. WAREHOUSE  
 201,610 SF  
 30 LOADING DOCKS  
 12 TRAILER PARKING SPACES  
 134 CAR PARKING SPACES

**PDA 1C**  
 TOTAL AREA: 3.575 ACRES  
 >75% GRASS COVER, HSG C: 1.308 ACRES  
 IMPERVIOUS COVERAGE: 2.267 ACRES

**PDA 1A**

**PDA 1D**  
 TOTAL AREA: 3.343 ACRES  
 >75% GRASS COVER, HSG C: 0.547 ACRES  
 WOODS, HSG C: 0.425 ACRES  
 IMPERVIOUS COVERAGE: 2.371 ACRES

**PDA 1A**  
 TOTAL AREA: 1.902 ACRES  
 >75% GRASS COVER, HSG C: 0.830 ACRES  
 IMPERVIOUS COVERAGE: 1.072 ACRES

**PDA 2**  
 TOTAL AREA: 0.443 ACRES  
 >75% GRASS COVER, HSG C: 0.338 ACRES  
 IMPERVIOUS COVERAGE: 0.105 ACRES

**REVISIONS**

REV	DATE	COMMENT	DRAWN BY	CHECKED BY

**811**  
 Know what's below.  
 Call before you dig.  
 NEW JERSEY  
 YOU MUST CALL 811 BEFORE ANY EXCAVATION  
 WHETHER IT'S ON PRIVATE OR PUBLIC LAND.  
 1-800-272-1000  
 www.nj-811.org

**FOR EXHIBIT PURPOSES ONLY**

THIS DRAWING IS INTENDED FOR MUNICIPAL AND/OR AGENCY REVIEW AND APPROVAL. IT IS NOT INTENDED AS A CONSTRUCTION DOCUMENT UNLESS INDICATED OTHERWISE.

PROJECT No.: NJA220121  
 DRAWN BY: ATK  
 CHECKED BY: AS  
 DATE: 12/28/2022  
 CAD ID: NJA220121-00-X-TTLB-CPTB

PROJECT:  
**DRAINAGE AREA MAPS**  
 FOR  
**IDIL DAVIDSON, LLC**  
 PROPOSED WAREHOUSE  
 BLOCK: 502.02, LOTS: 37.01 & 38.01  
 195-215 DAVIDSON AVENUE  
 TOWNSHIP OF FRANKLIN  
 SOMERSET COUNTY, NEW JERSEY

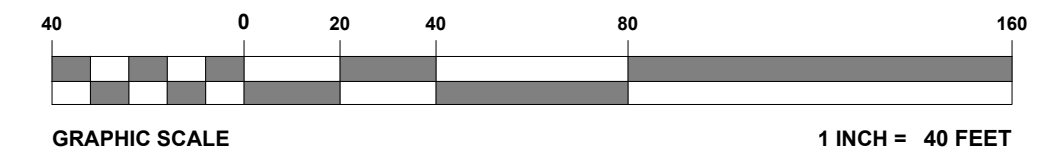
**BOHLER**  
 BOHLER ENGINEERING NJ, LLC  
 30 INDEPENDENCE BLVD., SUITE 200  
 WARREN, NJ 07059  
 Phone: (908) 665-6300  
 Fax: (908) 724-4401  
 www.BohlerEngineering.com  
 NJ CERT. OF AUTHORIZATION NO. 246A28161700 & M06000122

**B.A. BOHLER**  
 PROFESSIONAL ENGINEER  
 NEW JERSEY LICENSE No. 47421  
 NEW YORK LICENSE No. 088514-1  
 PENNSYLVANIA LICENSE No. 077366  
 CONNECTICUT LICENSE No. 26039  
 DELAWARE LICENSE No. 17111  
 OHIO LICENSE No. 78297

SHEET TITLE:  
**PROPOSED DRAINAGE AREA MAP**

SHEET NUMBER:  
**C-01**

ORG. DATE - 12/28/2022



G:\0322\NJ\2021\01\CADD\DRAWINGS\PLAN SET\DRAINAGE MAPS\1\JAN2021\21-00-PLAN-01.dwg - LAYOUT, C-01.PDAM



**REVISIONS**

REV	DATE	COMMENT	DRAWN BY	CHECKED BY

**811**  
 Know what's below.  
 Call before you dig.  
 NEW JERSEY  
 YOU MUST CALL 811 BEFORE ANY EXCAVATION  
 WHETHER IT'S ON PRIVATE OR PUBLIC LAND.  
 1-800-272-1000  
 www.nj-811.org

**FOR EXHIBIT PURPOSES ONLY**

THIS DRAWING IS INTENDED FOR MUNICIPAL AND/OR AGENCY REVIEW AND APPROVAL. IT IS NOT INTENDED AS A CONSTRUCTION DOCUMENT UNLESS INDICATED OTHERWISE.

PROJECT No.: NJA220121  
 DRAWN BY: ATK  
 CHECKED BY: AS  
 DATE: 12/28/2022  
 CAD ID: NJA220121.00-X-TTLB-CPTB

PROJECT:  
**DRAINAGE AREA MAPS**  
 FOR  
**IDIL DAVIDSON, LLC**  
 PROPOSED WAREHOUSE  
 BLOCK: 502.02, LOTS: 37.01 & 38.01  
 195-215 DAVIDSON AVENUE  
 TOWNSHIP OF FRANKLIN  
 SOMERSET COUNTY, NEW JERSEY

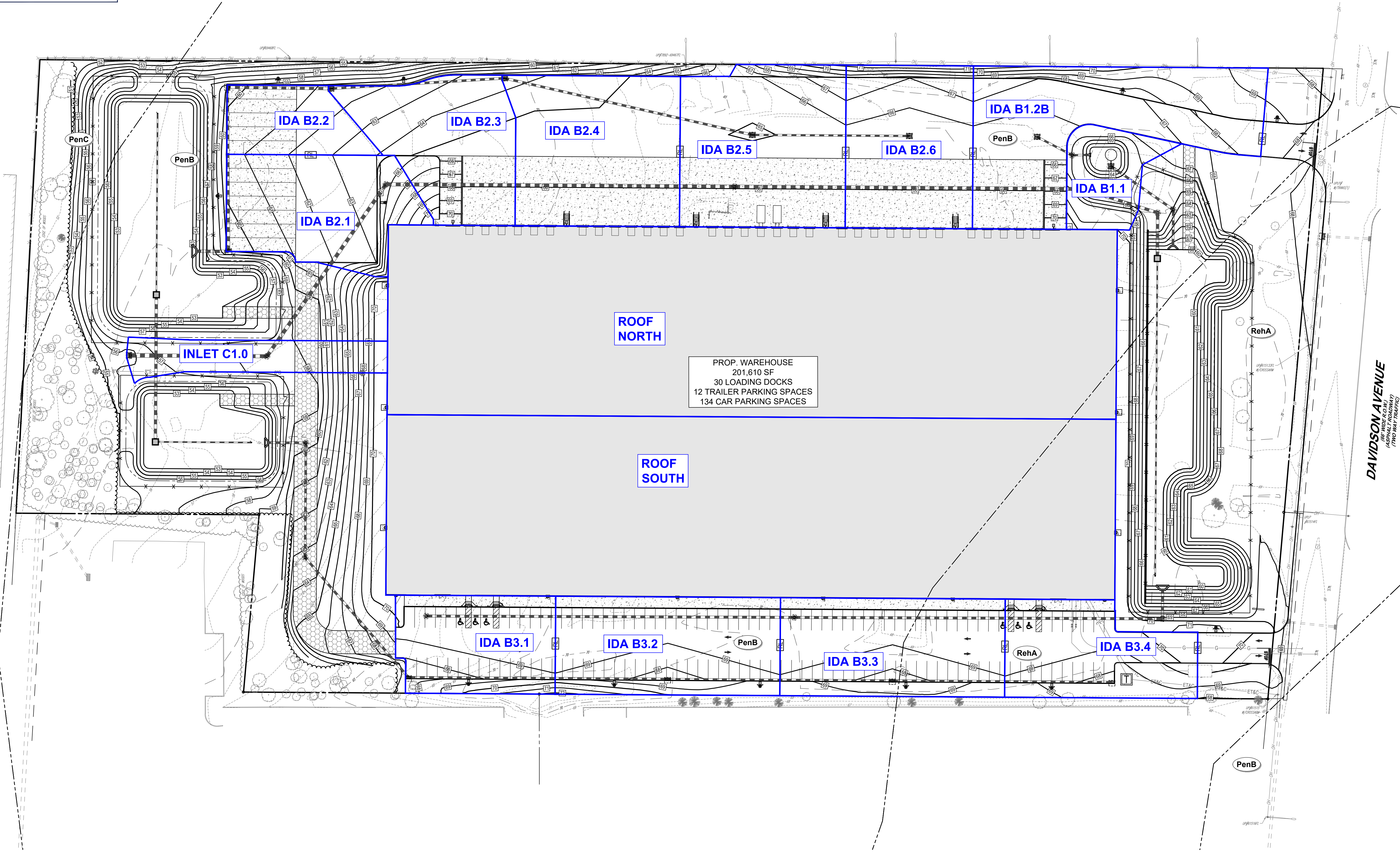
**BOHLER**  
 BOHLER ENGINEERING NJ, LLC  
 30 INDEPENDENCE BLVD., SUITE 200  
 WARREN, NJ 07059  
 Phone: (908) 665-6300  
 Fax: (908) 724-4401  
 www.BohlerEngineering.com  
NJ CERT. OF AUTHORIZATION NO. 246A28161700 & M6000122

**B.A. BOHLER**  
 PROFESSIONAL ENGINEER  
 NEW JERSEY LICENSE No. 47421  
 NEW YORK LICENSE No. 088514-1  
 PENNSYLVANIA LICENSE No. 077366  
 CONNECTICUT LICENSE No. 26039  
 DELAWARE LICENSE No. 17111  
 OHIO LICENSE No. 78297

SHEET TITLE:  
**INLET DRAINAGE AREA MAP**

SHEET NUMBER:  
**C-01**

ORG. DATE - 12/28/2022



DAVIDSON AVENUE  
(TWO WAY TRAFFIC)

PROP. WAREHOUSE  
 201,610 SF  
 30 LOADING DOCKS  
 12 TRAILER PARKING SPACES  
 134 CAR PARKING SPACES

ROOF NORTH

ROOF SOUTH

INLET C1.0

IDA B2.2

IDA B2.3

IDA B2.4

IDA B2.5

IDA B2.6

IDA B1.2B

IDA B1.1

IDA B3.1

IDA B3.2

IDA B3.3

IDA B3.4

