

FRANKLIN TOWNSHIP DISTRIBUTION CENTER - BUILDING A

104 SCHOOLHOUSE RD.
FRANKLIN TWP, NJ 08873

LINK LOGISTICS

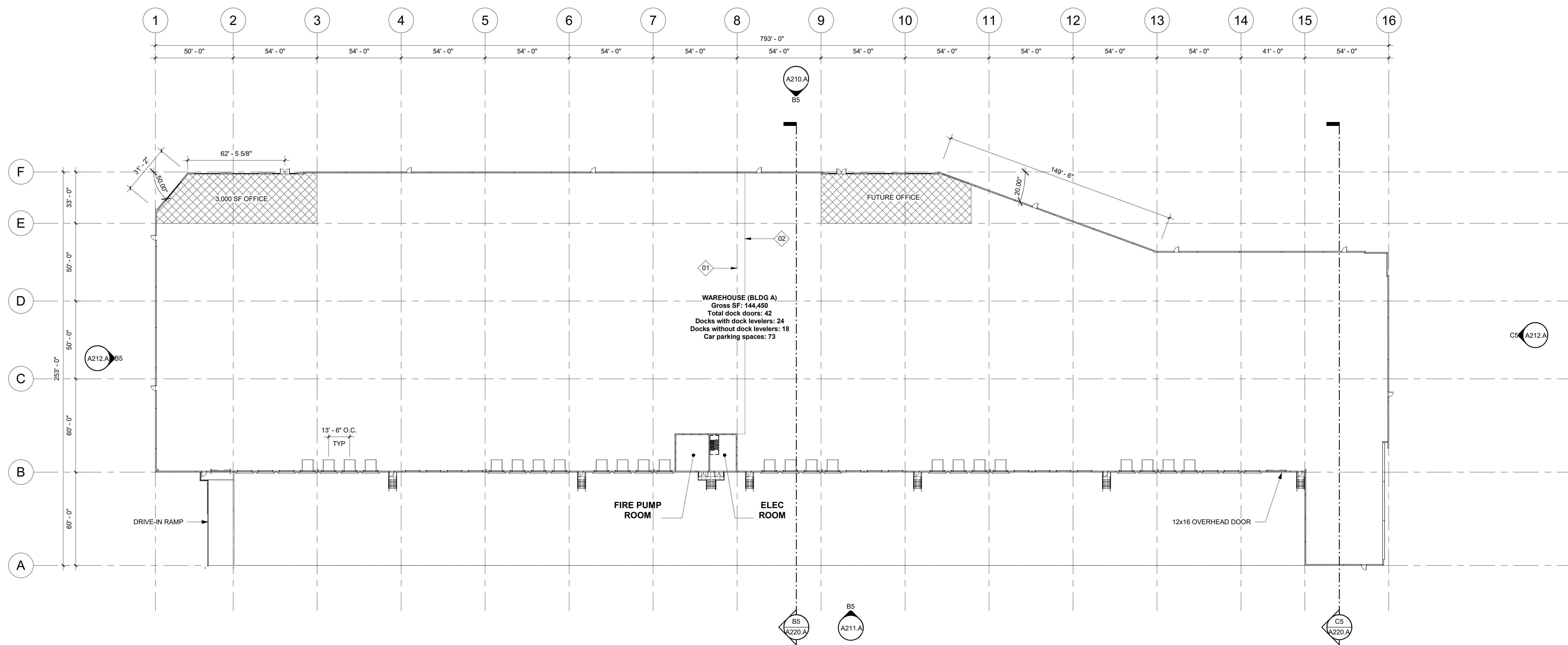
PROJECT NORTH

| REV. | DATE | DESCRIPTION |
|------|------|-------------|
| | | |
| | | |
| | | |
| | | |
| | | |
| | | |
| | | |
| | | |
| | | |
| | | |
| | | |
| | | |
| | | |
| | | |

PROJECT NUMBER: **NPP22-036800**
Copyright (c) by NORR. All Rights Reserved.

SHEET TITLE:
OVERALL FLOOR PLAN

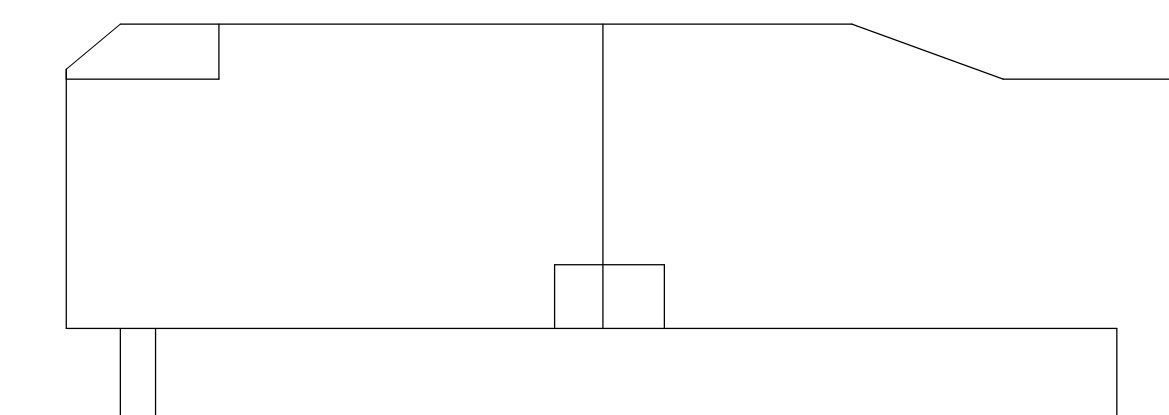
SHEET NUMBER:
A110.A

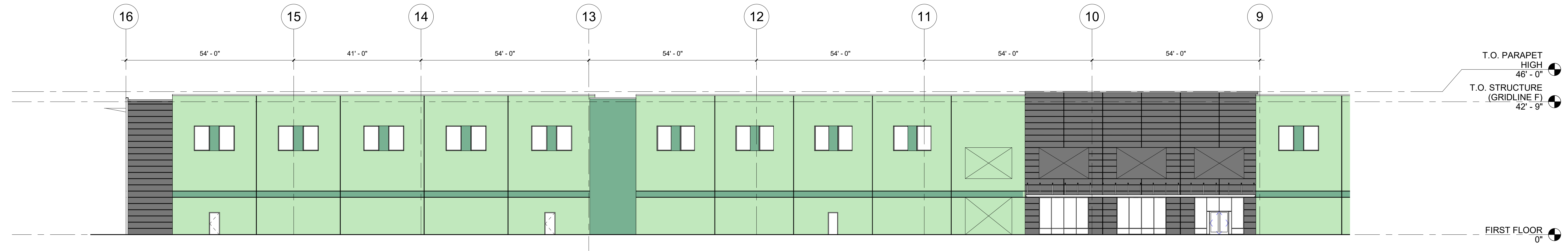


B5 FIRST FLOOR PLAN
1/32" = 1'-0"

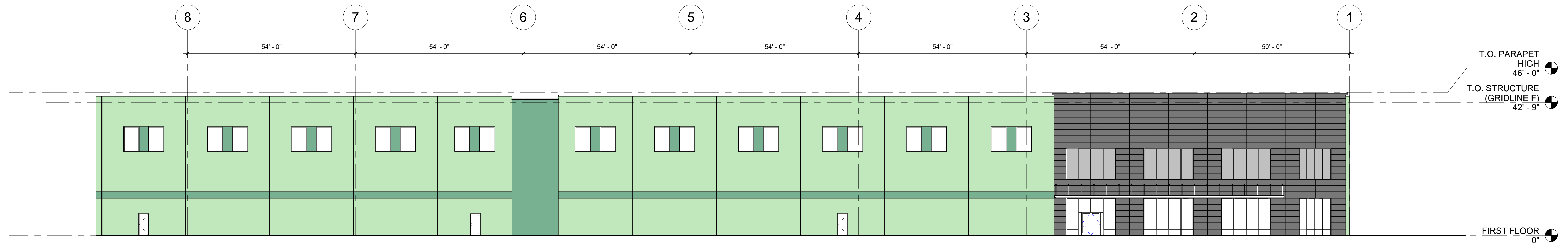
| KEYED NOTES - FLOOR PLANS | |
|---------------------------|---|
| TAG | DESCRIPTION |
| D1 | LATERAL BRACING LOCATION |
| D2 | POTENTIAL FUTURE DEMISING WALL LOCATION |

KEY PLAN





D5 ENLARGED NORTH ELEVATION L
1/16" = 1'-0"

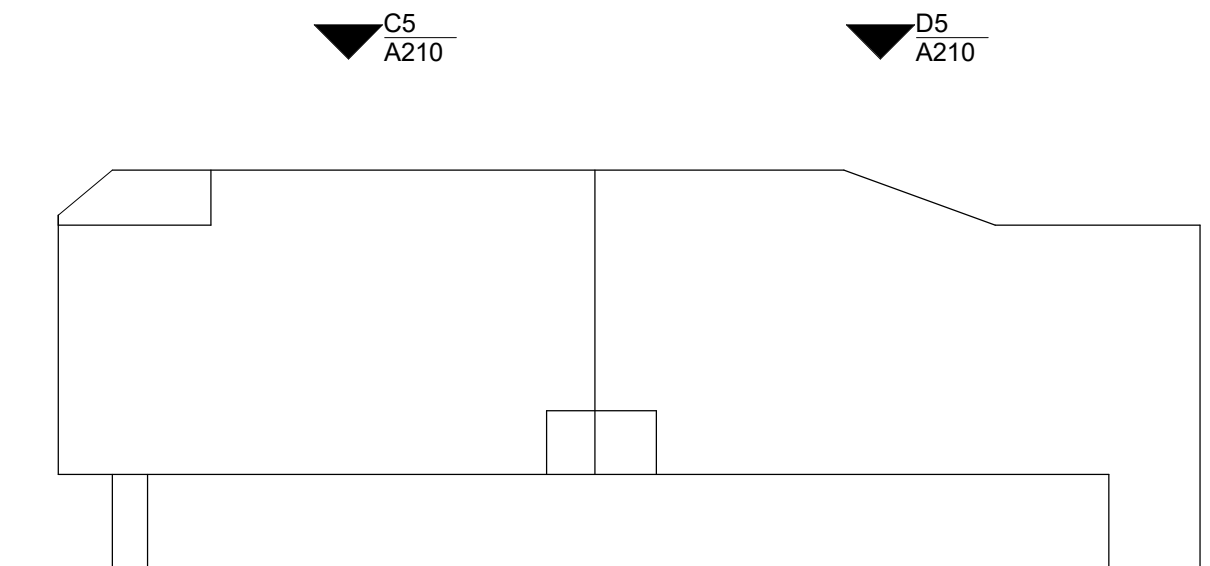


C5 ENLARGED NORTH ELEVATION R
1/16" = 1'-0"



B5 OVERALL NORTH ELEVATION
1/32" = 1'-0"

KEY PLAN

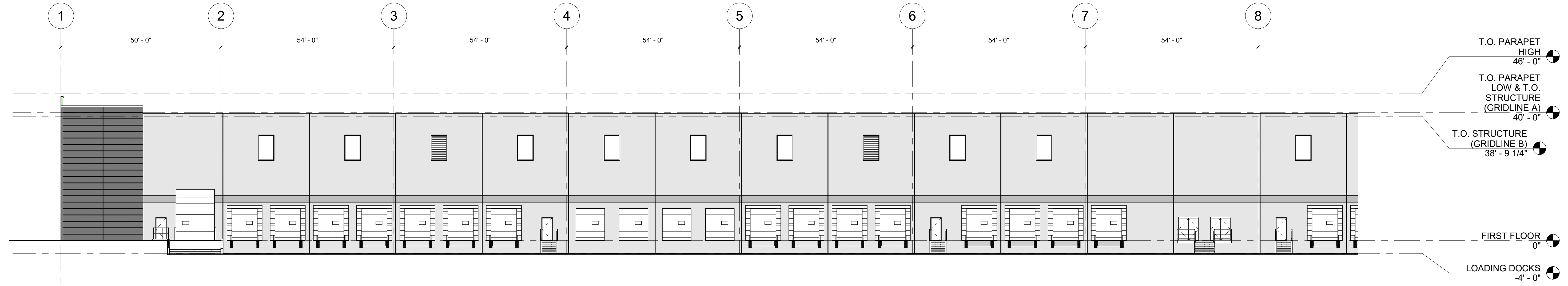


| REV. | DATE | DESCRIPTION |
|------|------|-------------|
| | | |
| | | |
| | | |

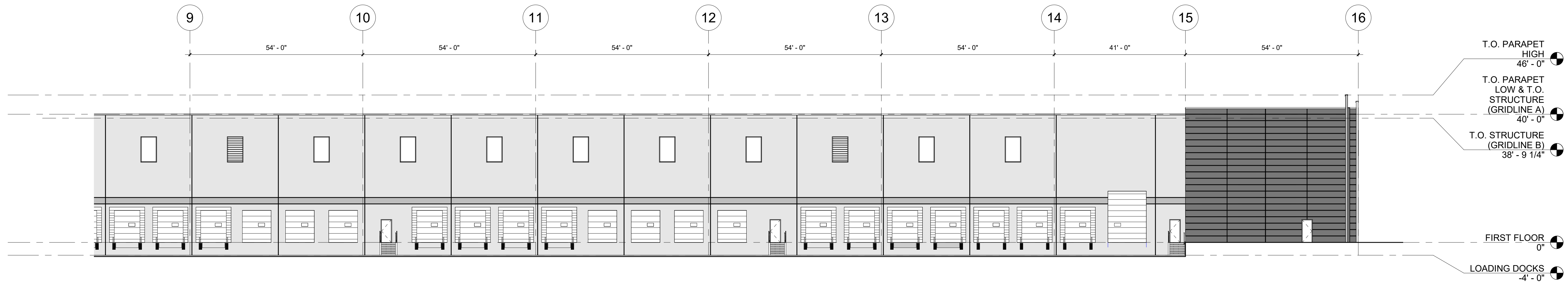
PROJECT NUMBER: **NPP22-036800**
Copyright (c) by NORR. All Rights Reserved.

SHEET TITLE:
**ENLARGED BUILDING
ELEVATIONS**

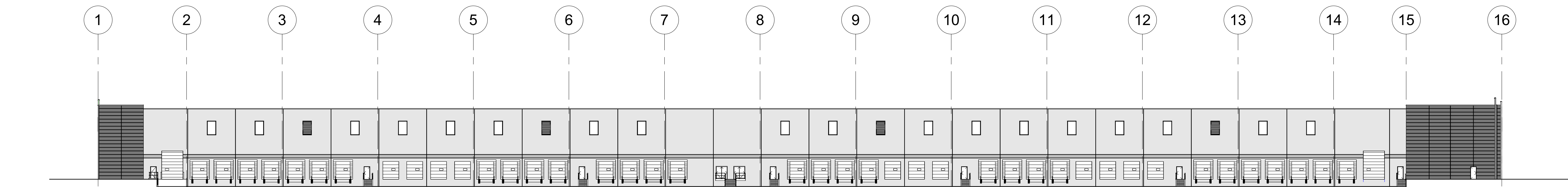
SHEET NUMBER:
A210.A



D5 ENLARGED SOUTH ELEVATION L
1/16" = 1'-0"

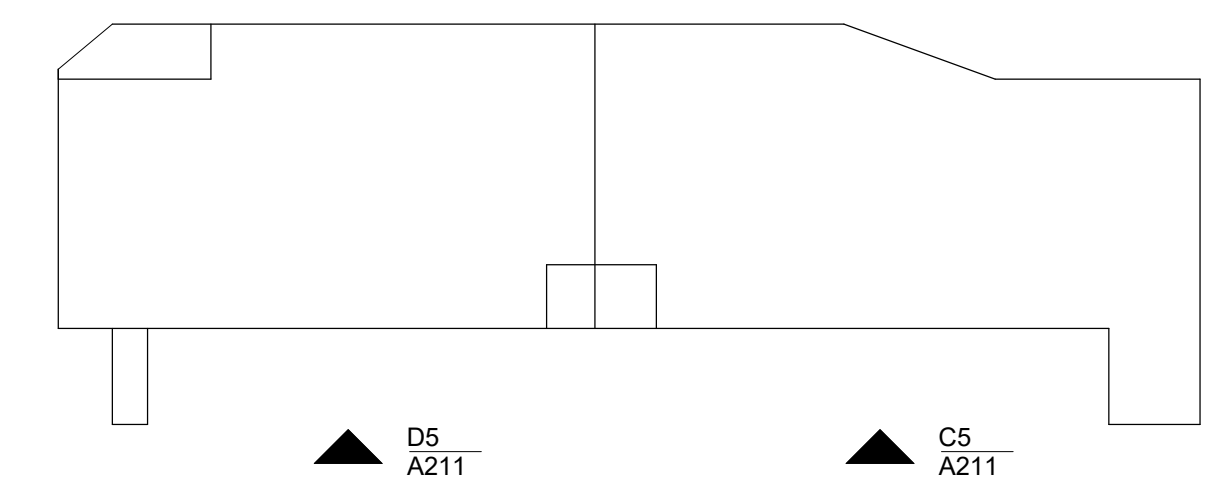


C5 ENLARGED SOUTH ELEVATION R
1/16" = 1'-0"



B5 OVERALL SOUTH ELEVATION
1/32" = 1'-0"

KEY PLAN



FRANKLIN TOWNSHIP DISTRIBUTION CENTER - BUILDING A

104 SCHOOLHOUSE RD.
FRANKLIN TWP, NJ 08873

LINK LOGISTICS

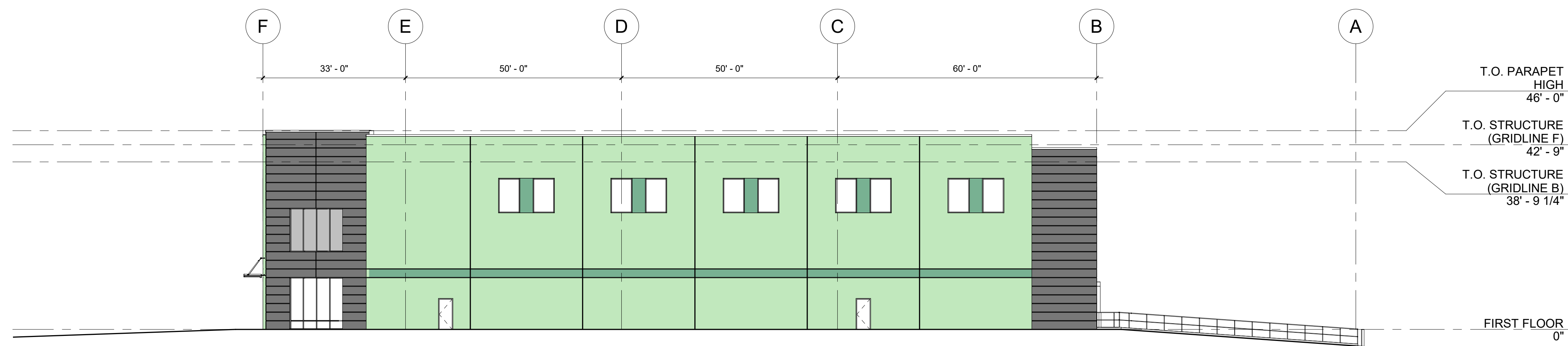
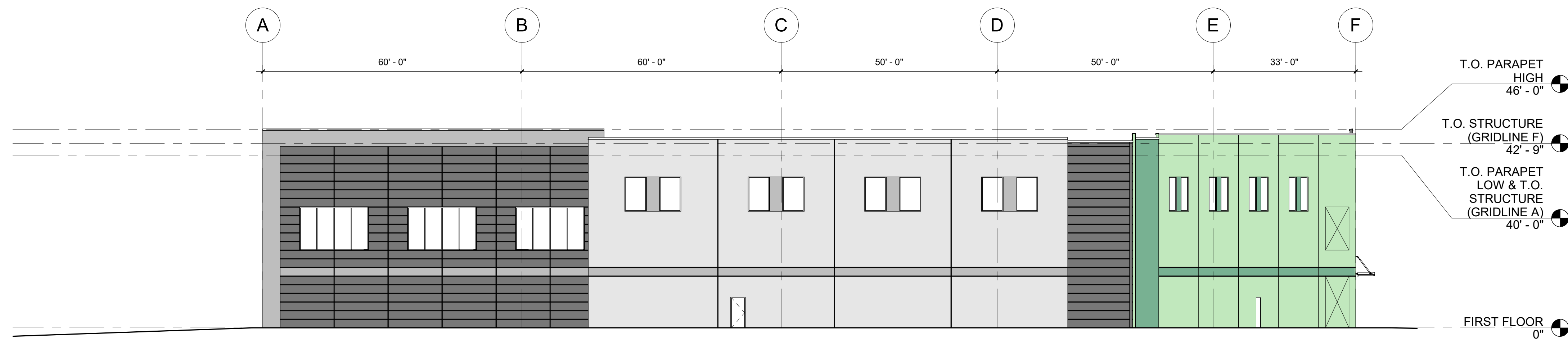
| REV. | DATE | DESCRIPTION | DRW. LCHK |
|------|----------|------------------|-----------|
| A | 02/21/23 | SCHEMATIC DESIGN | |

PROJECT NUMBER: **NPP22-036800**
Copyright (c) by NORR. All Rights Reserved.
SHEET TITLE:
ENLARGED BUILDING ELEVATIONS

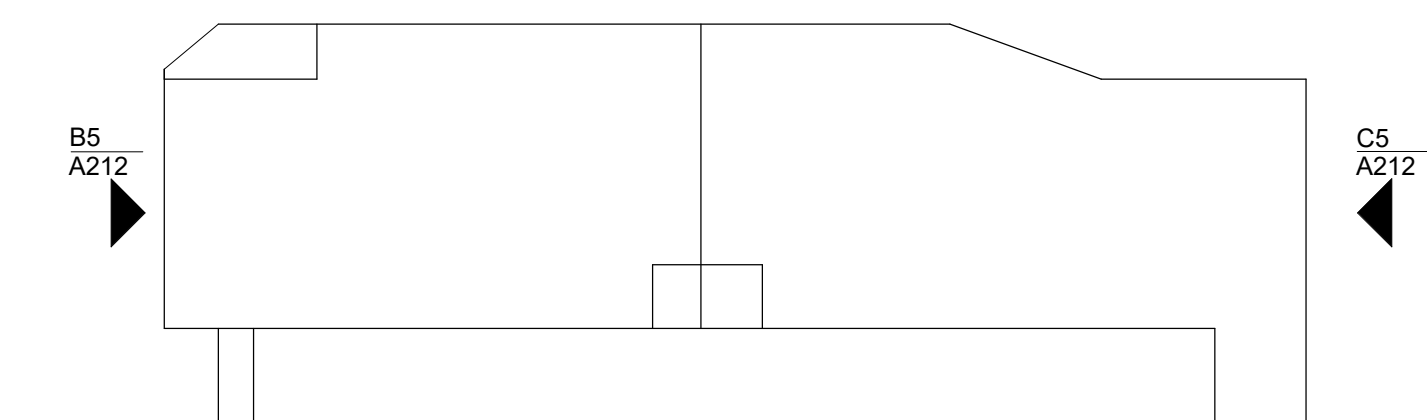
SHEET NUMBER:
A211.A

FRANKLIN TOWNSHIP DISTRIBUTION CENTER - BUILDING A
104 SCHOOLHOUSE RD.
FRANKLIN TWP, NJ 08873

LINK LOGISTICS



KEY PLAN

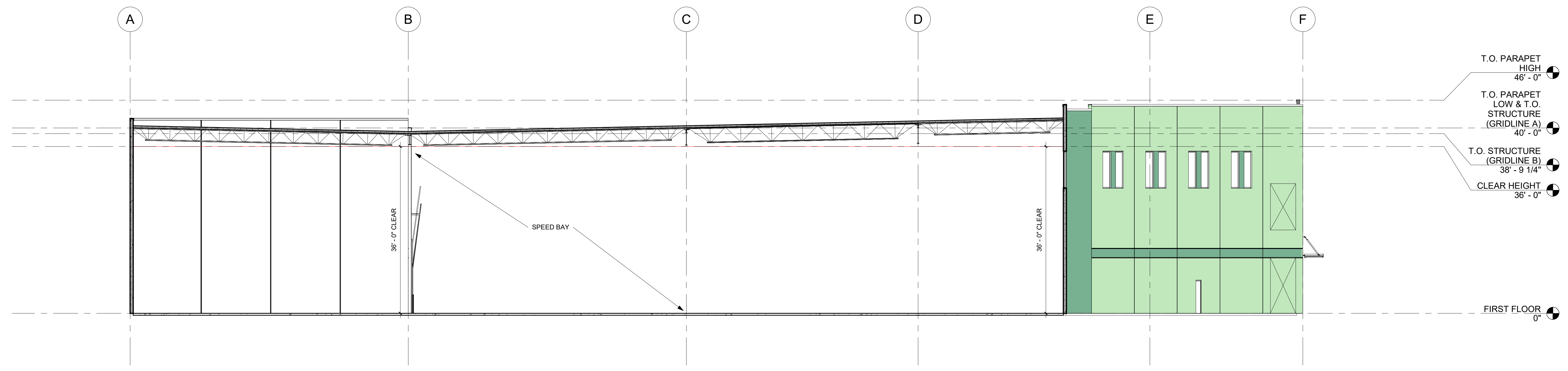


| REV. | DATE | DESCRIPTION | DRW. LCHK |
|------|----------|------------------|-----------|
| A | 02/21/23 | SCHEMATIC DESIGN | |

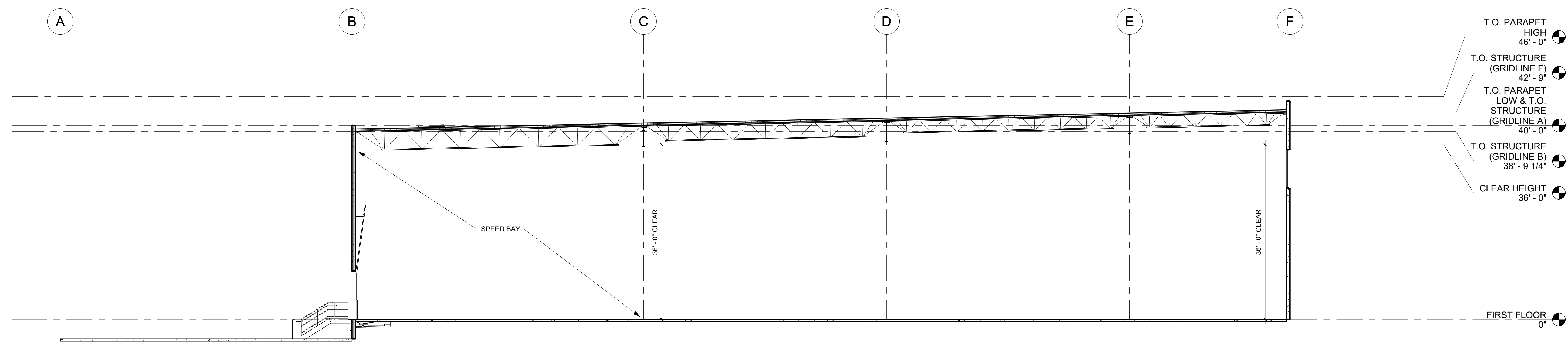
PROJECT NUMBER: **NPP22-036800**
Copyright (c) by NORR. All Rights Reserved.

SHEET TITLE:
ENLARGED BUILDING ELEVATIONS

SHEET NUMBER:
A212.A



C5 OVERALL TRANSVERSE BUILDING SECTION
THROUGH SOUTHEAST CORNER
3/32" = 1'-0"



B5 OVERALL TRANSVERSE BUILDING SECTION
3/32" = 1'-0"

**FRANKLIN TOWNSHIP DISTRIBUTION
CENTER - BUILDING A**
104 SCHOOLHOUSE RD.
FRANKLIN TWP, NJ 08873

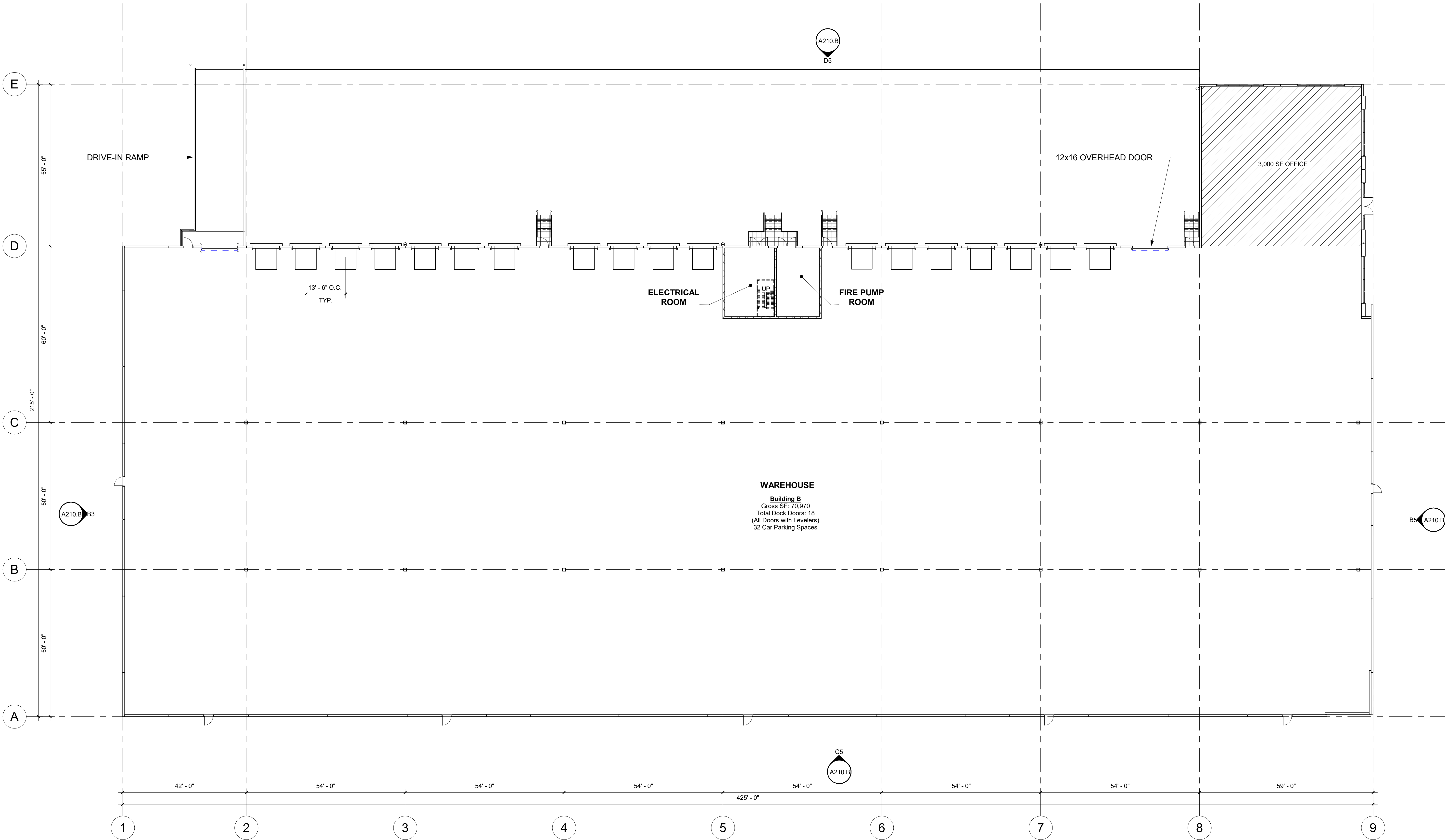
LINK LOGISTICS

| REV. | DATE | DESCRIPTION | DRW. LCHK |
|------|----------|------------------|-----------|
| A | 02/21/23 | SCHEMATIC DESIGN | |

PROJECT NUMBER: **NPP22-036800**
Copyright (c) by NORR. All Rights Reserved.

**OVERALL BUILDING
SECTIONS**

SHEET NUMBER
A220.A



A2 FIRST FLOOR PLAN
1/16" = 1'-0"

PRELIMINARY
FOR REVIEW ONLY
THESE DOCUMENTS ARE FOR
DESIGN REVIEW AND ARE NOT
INTENDED FOR:
BIDDING
PERMIT SUBMISSION
CONSTRUCTION

CLIENT:
LINK LOGISTICS
802 W. OFFICE CENTER DRIVE, SUITE 200
FORT WASHINGTON, PA 19034

PROJECT TEAM
NORR
One Penn Center
1617 JFK Boulevard, Suite 1600
Philadelphia PA 19103
norr.com

**FRANKLIN TOWNSHIP DISTRIBUTION
CENTER - BUILDING B**
104 SCHOOLHOUSE RD.
FRANKLIN TOWNSHIP NJ, 08873
LINK LOGISTICS

PROJECT
NORTH

| REV. | DATE | DESCRIPTION |
|------|------|-------------|
| | | |
| | | |
| | | |
| | | |
| | | |
| | | |
| | | |
| | | |
| | | |

PROJECT NUMBER: **NPP22-036800**
Copyright (c) by NORR. All Rights Reserved.

**OVERALL FLOOR
PLAN**

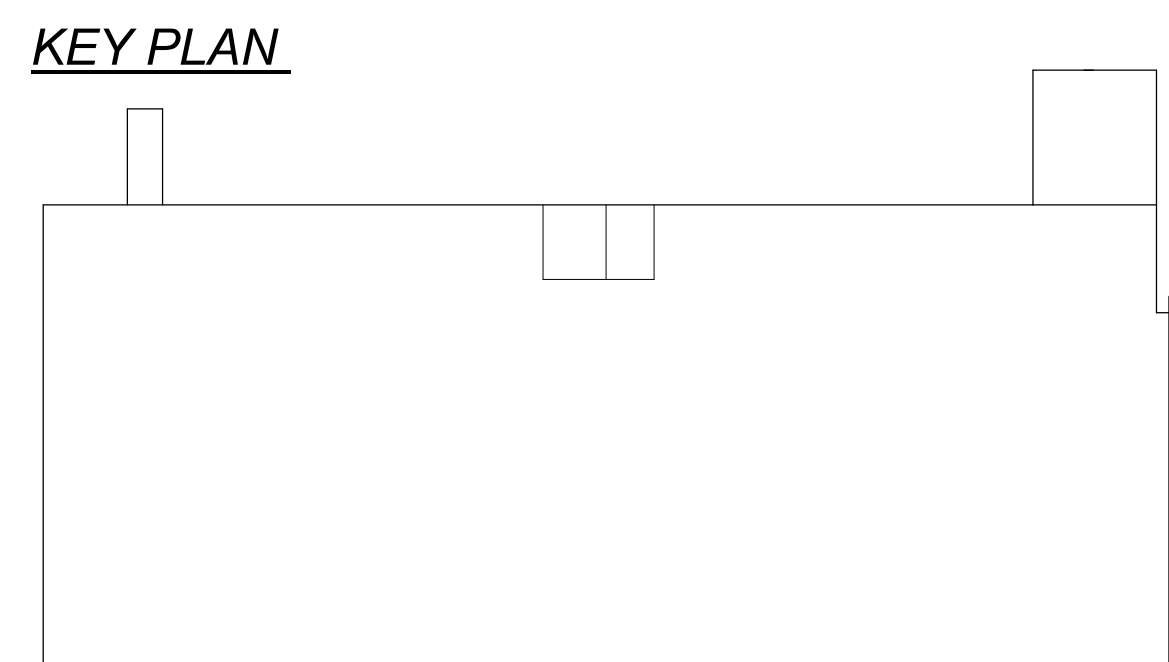
SHEET NUMBER
A110.B

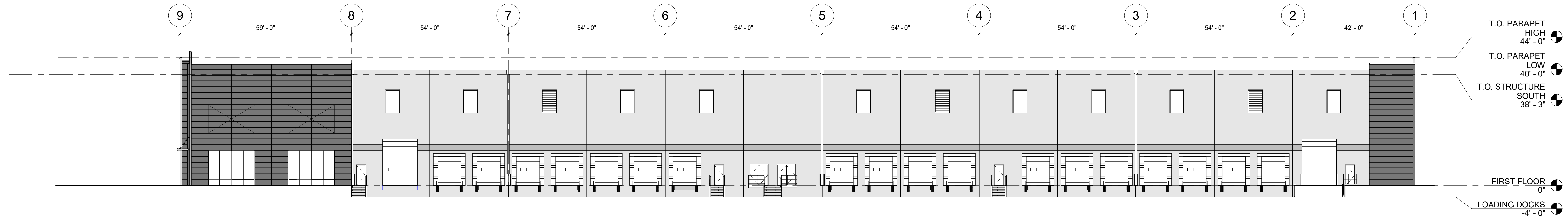
| KEYED NOTES - FLOOR PLANS | |
|---------------------------|-------------|
| TAG | DESCRIPTION |
| | |
| | |

- FLOOR PLAN GENERAL NOTES**
- DO NOT SCALE DRAWINGS. WRITTEN DIMENSIONS GOVERN. ALL PARTITION LOCATIONS SHALL BE AS SHOWN ON PARTITION PLAN. IN CASE OF CONFLICT NOTIFY ARCHITECT IMMEDIATELY. PARTITION PLAN BY ARCHITECT TAKES PRECEDENCE OVER ALL OTHER PLANS.
 - DIMENSIONS NOTED "CLEAR" OR "CLR" OR "HOLD" MUST BE ACCURATELY MAINTAINED. SHALL ALLOW FOR THICKNESS OF ALL WALL FINISHES U.O.N., AND SHALL NOT VARY MORE THAN + 1/8" WITHOUT WRITTEN INSTRUCTION FROM ARCHITECT.
 - ALL PARTITIONS ARE DIMENSIONED FROM FINISH FACE OF GYPSUM BOARD TO FINISH FACE OF GYPSUM BOARD U.O.N.
 - ALL FLOOR SLAB PENETRATIONS FOR PIPING SHALL BE FULLY PACKED AND SEALED IN ACCORDANCE WITH THE APPLICABLE BUILDING AND FIRE CODES. ANY PENETRATIONS AT RATED PARTITIONS TO BE PER APPLICABLE UL ASSEMBLY.
 - U.O.N. DOORS ARE CENTERED OR HINGE SIDE IS TO BE LOCATED 4" FROM CORNER AS INDICATED. DOORS MUST HAVE 1'-6" CLEAR ON STRIKE/PULL SIDE AND 12" CLEAR ON STRIKE/PUSH SIDE OF DOOR. VERIFY AND ADVISE ARCHITECTS OF EXCEPTIONS PRIOR TO CLOSING OUT PARTITIONS.
 - ALL GYPSUM BOARD PARTITIONS SHALL BE TAPED AND SANDED SMOOTH WITH NO VISIBLE JOINTS. PATCH AND REPAIR SURFACES TO MATCH ADJACENT OR ADJOINING SURFACES WHERE REQUIRED.
 - REFER TO A000-SERIES SHEETS FOR ADDITIONAL NOTES, LEGENDS, SYMBOLS, ABBREVIATIONS, AND SCHEDULES.
 - ALL MILLWORK & WALL-HUNG FURNITURE TO BE FASTENED TO THE PARTITION. PROVIDE BLOCKING FOR ALL MILLWORK & WALL-HUNG FURNITURE NOT SUPPORTED BY THE SLAB OR ABOVE 4'-0" HEIGHT. ALL CONCEALED WOOD BLOCKING TO BE FIRE TREATED, AS REQUIRED BY APPLICABLE CODES.

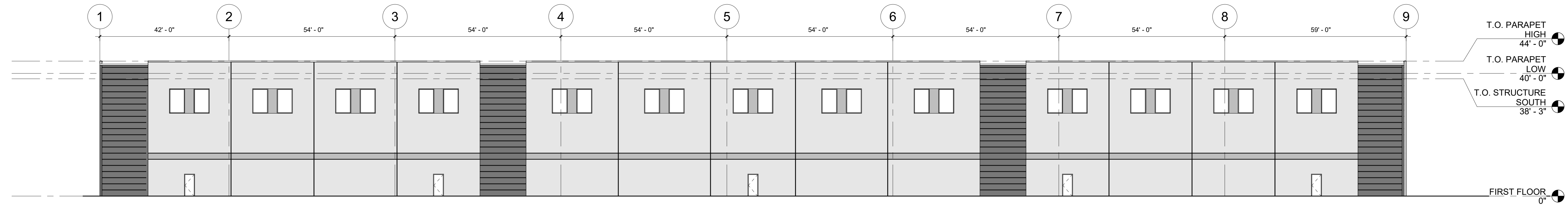
FLOOR PLAN LEGEND - NEW WORK

| | |
|--|--|
| | NEW PARTITION TAG. SEE PARTITION TYPES |
| | NEW PARTITION TAG. SEE PARTITION TYPES |
| | NEW DOOR & DOOR TAG WITH DOOR NUMBER |
| | NEW GLAZING & GLAZING TAG |
| | FIRE EXTINGUISHER CABINET- SURFACE MOUNTED & SEMI-RECESSED |
| | FIRE EXTINGUISHER- BRACKET MOUNTED |
| | PROVIDE VAPOR BARRIER BELOW SLAB. |

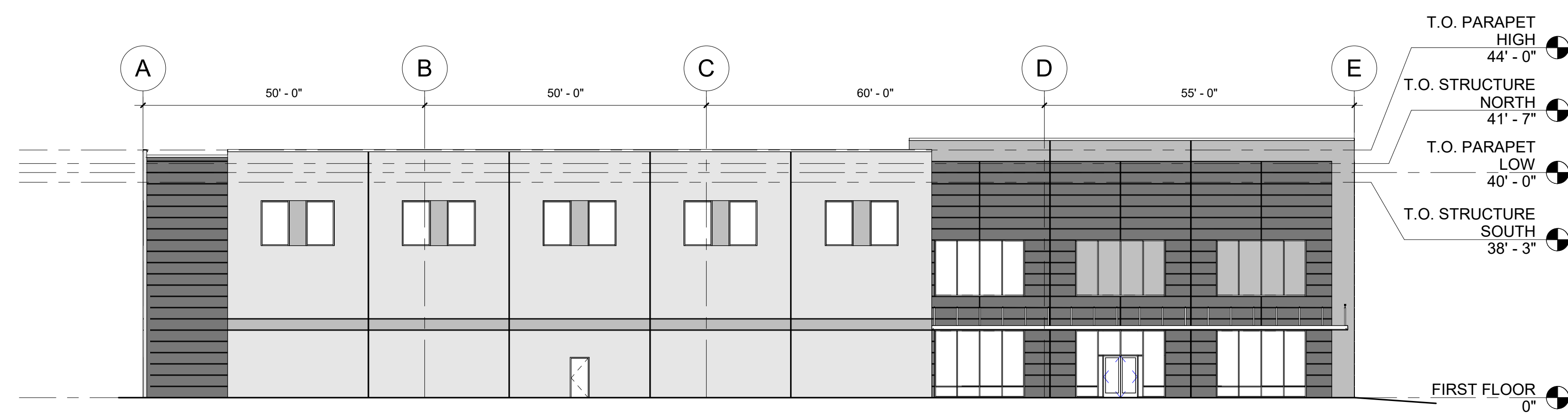




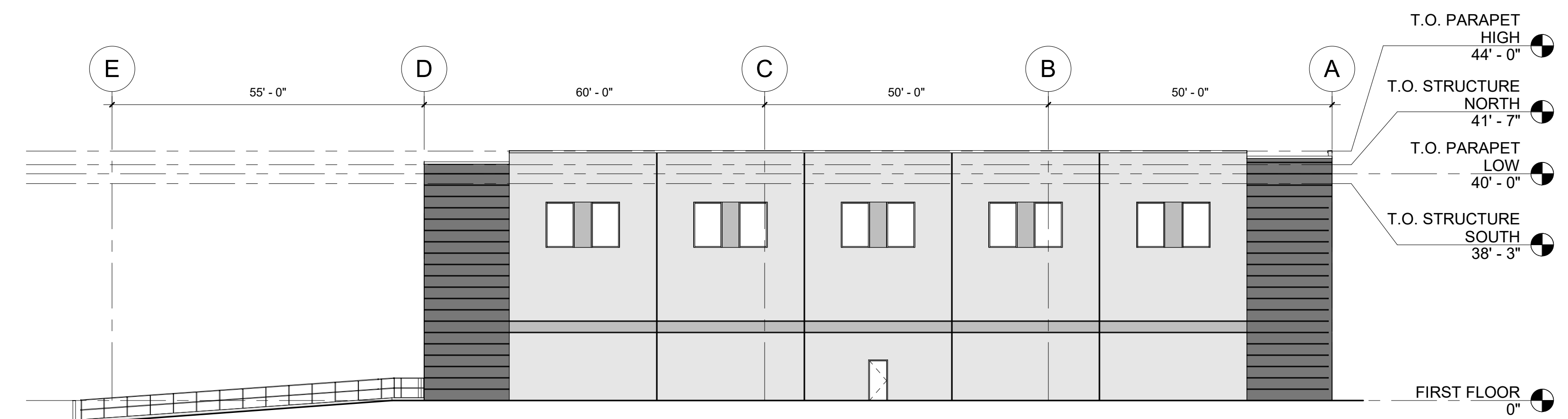
D5 OVERALL NORTH ELEVATION
1/16" = 1'-0"



C5 OVERALL SOUTH ELEVATION
1/16" = 1'-0"

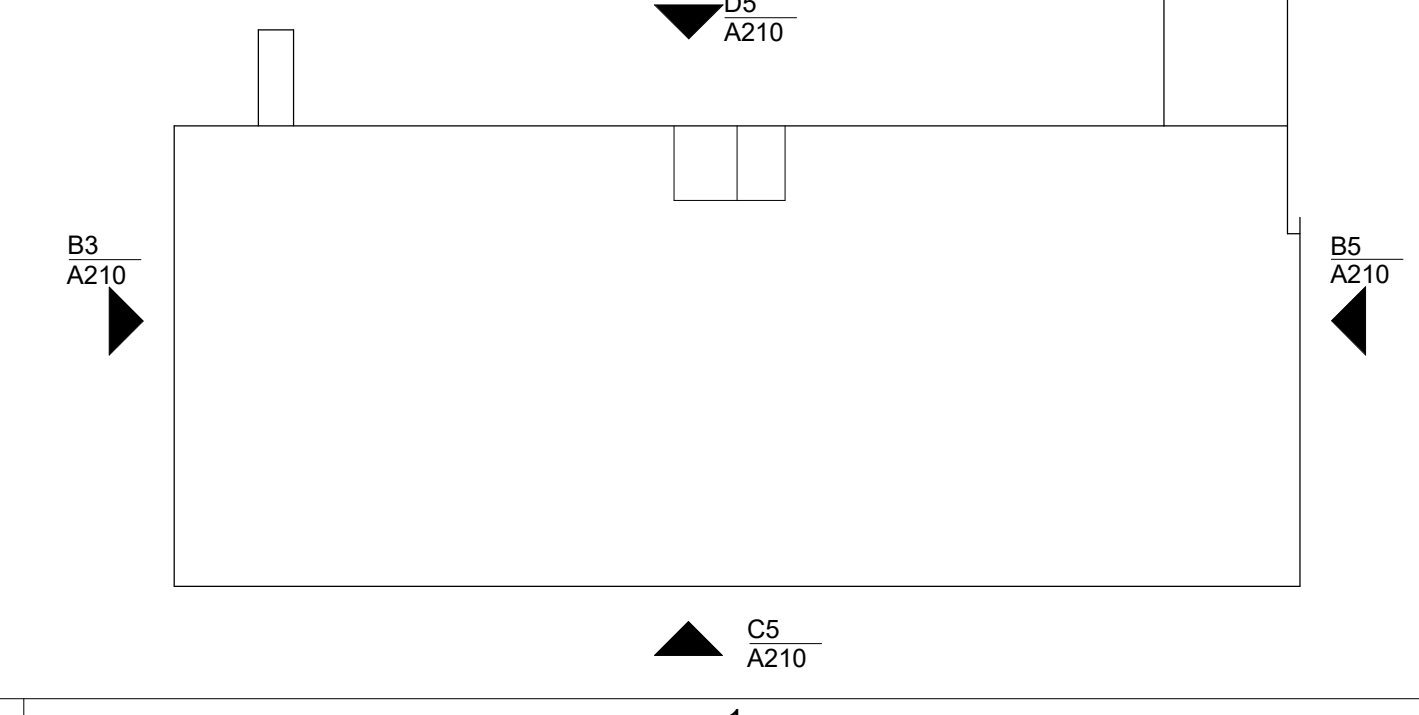


B5 OVERALL EAST ELEVATION
1/16" = 1'-0"



B3 OVERALL WEST ELEVATION
1/16" = 1'-0"

KEY PLAN



| REV. | DATE | DESCRIPTION |
|------|----------|------------------|
| A | 02/21/23 | SCHEMATIC DESIGN |

PROJECT NUMBER: **NPP22-036800**
Copyright (c) by NORR. All Rights Reserved.
SHEET TITLE:
OVERALL BUILDING ELEVATIONS

SHEET NUMBER:
A210.B