

REV / ISSUE	DATE	DESCRIPTION

LEGEND	
[Symbol]	STORM INLET
[Symbol]	SIGN
[Symbol]	UTILITY POLE
[Symbol]	FIRE HYDRANT
[Symbol]	LIGHT
[Symbol]	TOP OF CURB
[Symbol]	DEPRESSED CURB
[Symbol]	BOTTOM OF CURB
[Symbol]	FLOOD LIGHT
[Symbol]	BOLLARD POST
[Symbol]	SPRINKLER
[Symbol]	TELEPHONE
[Symbol]	GAS
[Symbol]	UNDERGROUND ELECTRIC
[Symbol]	OVERHEAD WIRES
[Symbol]	CHAIN LINK FENCE
[Symbol]	EDGE OF PAVEMENT
[Symbol]	ELECTRIC BOX
[Symbol]	IRON PIPE/IRON PIN
[Symbol]	CONCRETE MONUMENT
[Symbol]	TREE
[Symbol]	WATER VALVE
[Symbol]	GAS VALVE
[Symbol]	SANITARY MANHOLE
[Symbol]	STORM MANHOLE
[Symbol]	ELECTRIC MANHOLE
[Symbol]	TELEPHONE MANHOLE
[Symbol]	WATER MANHOLE
[Symbol]	# OF PARKING SPACES

PAULUS, SOKOLOWSKI & SARTOR, LLC.
 3 MOUNTAINVIEW ROAD
 WARREN, NJ 07059
 PHONE: (732) 560-9700

CERTIFICATE OF AUTHORIZATION NO. 24GA28032700

ALL DIMENSIONS MUST BE CHECKED BY THE CONTRACTOR. HOTOY PAULUS, SOKOLOWSKI AND SARTOR, LLC. OR ANY CONTRACTOR, ENGINEER, ARCHITECT OR PROFESSIONAL IN CONTRACT DRAWINGS OR SPECIFICATIONS BEFORE PROCEEDING WITH CONSTRUCTION.

ALL DIMENSIONS SHALL BE AS NOTED IN NOTES OR DIMENSIONS ON THE CONTRACT DRAWINGS. DO NOT SCALE THE DRAWINGS TO OBTAIN DIMENSIONS.

PLEASE CONTACT DRAWING CHIEF OR ARCHITECT IMMEDIATELY FOR THE LATEST PROJECT AND CLARIFY THE ARCHITECT'S INTENT FOR USE OR EXTENSION OF THIS PROJECT OR FOR REUSE ON ANY OTHER PROJECT.

THE COPYING AND/OR REPRODUCTION OF THIS DOCUMENT ON ANY PORTION HEREOF WITHOUT THE WRITTEN PERMISSION OF PAULUS, SOKOLOWSKI AND SARTOR, LLC. IS PROHIBITED.

IF THESE DRAWINGS ARE SPECIFICALLY DESIGNATED AS "CONSTRUCTION COPY" THESE DRAWINGS SHALL NOT BE USED FOR CONSTRUCTION OR IMPROVEMENTS REPORTS. CONTRACTOR SHALL NOTIFY THE DESIGN ENGINEER TO OBTAIN CONSTRUCTION DOCUMENTS.

COPYRIGHT 2022 PAULUS, SOKOLOWSKI AND SARTOR, LLC. - ALL RIGHTS RESERVED.

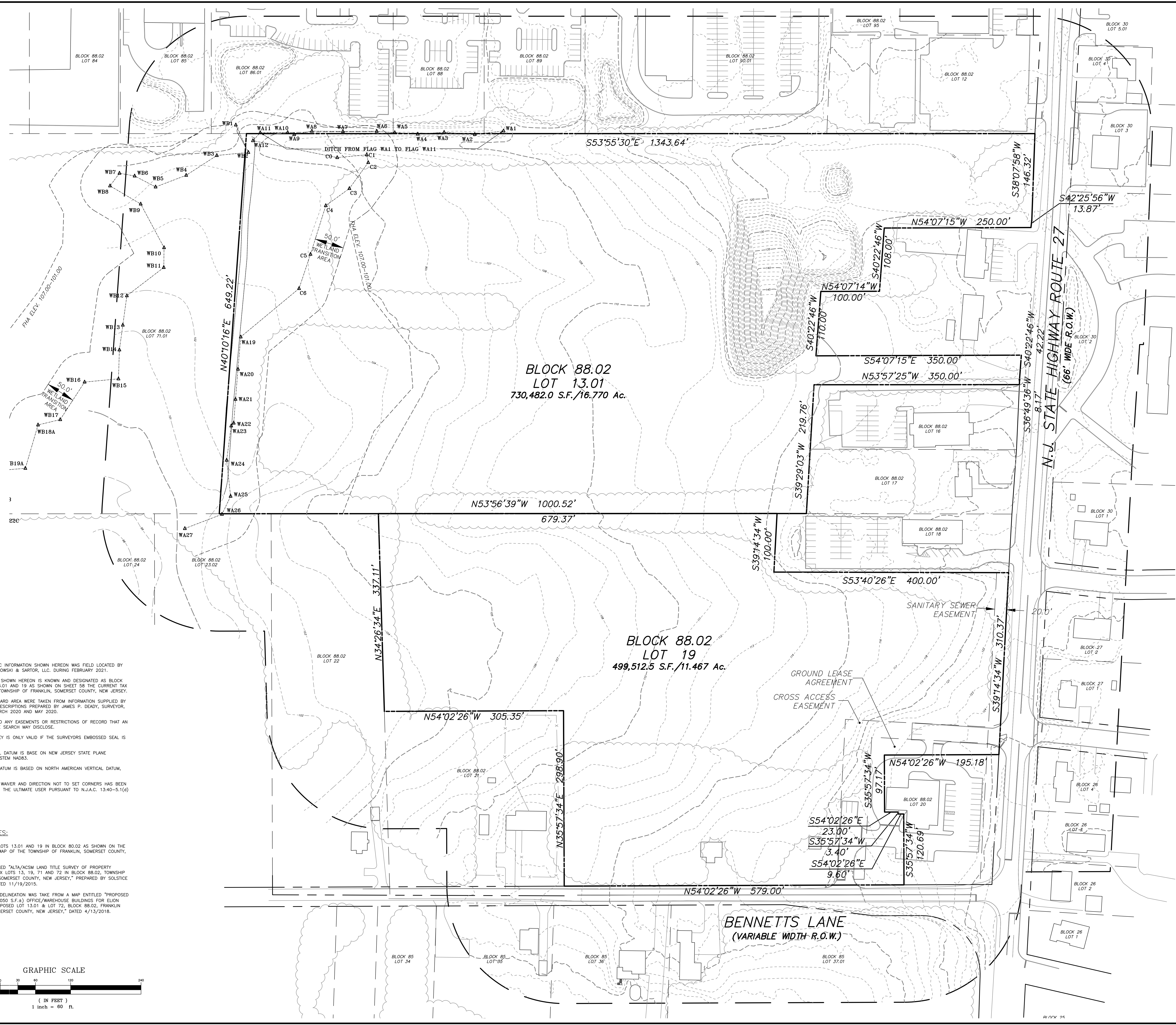
BRAD JOSHNICK
 PROFESSIONAL LAND SURVEYOR
 N.J. LIC. NO. 37947

SIGNATURE _____ DATE 4/21/2022

PROJECT: **FRANKLIN WAREHOUSE**
BLOCK 88.02, LOTS 13.01 AND 19
 TOWNSHIP OF FRANKLIN, SOMERSET COUNTY, NEW JERSEY

SHEET TITLE: **BOUNDARY TOPOGRAPHIC AND UTILITY SURVEY**

PROJECT NO.: 04598-014 DRAWN BY: MPP
 SCALE: 1"=60' CHECKED BY: JV
 DATE: 3/25/2022 SHEET 1 OF 1
 SHEET NO. **S-1**



BLOCK 88.02
LOT 13.01
 730,482.0 S.F./16,770 Ac.

BLOCK 88.02
LOT 19
 499,512.5 S.F./11,467 Ac.

BENNETTS LANE
 (VARIABLE WIDTH R.O.W.)

- NOTES:**
1. PLANIMETRIC INFORMATION SHOWN HEREON WAS FIELD LOCATED BY PAULUS, SOKOLOWSKI & SARTOR, LLC. DURING FEBRUARY 2021.
 2. BOUNDARY SHOWN HEREON IS KNOWN AND DESIGNATED AS BLOCK 88.02, LOTS 13.01 AND 19 AS SHOWN ON SHEET 58 THE CURRENT TAX MAPS OF THE TOWNSHIP OF FRANKLIN, SOMERSET COUNTY, NEW JERSEY.
 3. FLOOD HAZARD AREA WERE TAKEN FROM INFORMATION SUPPLIED BY CLIENT FROM DESCRIPTIONS PREPARED BY JAMES P. DEADY, SURVEYOR, LLC, DATED MARCH 2020 AND MAY 2020.
 4. SUBJECT TO ANY EASEMENTS OR RESTRICTIONS OF RECORD THAT AN ACCURATE TITLE SEARCH MAY DISCLOSE.
 5. THIS SURVEY IS ONLY VALID IF THE SURVEYORS EMBOSSED SEAL IS AFFIXED.
 6. HORIZONTAL DATUM IS BASE ON NEW JERSEY STATE PLANE COORDINATE SYSTEM NAD83.
 7. VERTICAL DATUM IS BASED ON NORTH AMERICAN VERTICAL DATUM, NAVD83.
 8. A WRITTEN WAIVER AND DIRECTION NOT TO SET CORNERS HAS BEEN OBTAINED FROM THE ULTIMATE USER PURSUANT TO N.J.A.C. 13:40-5.1(g)

- REFERENCES:**
1. KNOW AS LOTS 13.01 AND 19 IN BLOCK 80.02 AS SHOWN ON THE CURRENT TAX MAP OF THE TOWNSHIP OF FRANKLIN, SOMERSET COUNTY, NEW JERSEY.
 2. MAP ENTITLED "ALTA/ACSM LAND TITLE SURVEY OF PROPERTY SITUATED AT TAX LOTS 13, 19, 71 AND 72 IN BLOCK 88.02, TOWNSHIP OF FRANKLIN, SOMERSET COUNTY, NEW JERSEY," PREPARED BY SOLSTICE SURVEYING, DATED 11/19/2015.
 3. WETLANDS DELINEATION WAS TAKE FROM A MAP ENTITLED "PROPOSED PHASE-1 (544,050 S.F.) OFFICE/WAREHOUSE BUILDINGS FOR ELION PARTNERS, PROPOSED LOT 13.01 & LOT 72, BLOCK 88.02, FRANKLIN TOWNSHIP, SOMERSET COUNTY, NEW JERSEY," DATED 4/13/2015.

