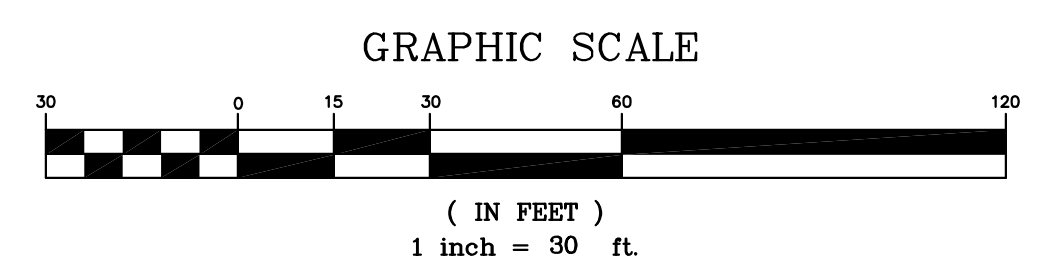


EXISTING REGULATED MOTOR VEHICLE SURFACE:
88,732 SF

TOTAL EXISTING IMPERVIOUS SURFACE:
143,116 SF

- SYMBOL LEGEND**
- GAS VALVE
 - WATER VALVE
 - SANITARY SEWER CLEANOUT
 - UTILITY MANNHOLE
 - LIGHT POLE
 - ROOF LIGHT
 - HANDICAP SPACE
 - HYDRANT
 - SIDE (ROAD)
 - SIDE (PRIVATE)
 - UTILITY POLE
 - GUY ANCHOR
 - INLET
 - FENCE
 - ELECTRIC/TELEPHONE CABLES
 - GAS MAIN
 - WATER MAIN
 - STORM SEWER PIPE
 - SANITARY SEWER PIPE
 - N NORTH
 - S SOUTH
 - E EAST
 - W WEST
 - ° ANGULAR DEGREES
 - ' ANGULAR MINUTES
 - " ANGULAR SECONDS
 - R RADIOS
 - L LENGTH
 - C CHORD
 - BRG CHORD BEARING
 - ⊠ TRANSFORMER



PRE DEVELOPMENT DRAINAGE MAP

400 COTTONTAIL LANE
LOTS 15.11 BLOCK 517.06

FRANKLIN TOWNSHIP SOMERSET COUNTY NEW JERSEY

STIRES ASSOCIATES, P.A.
ENGINEERS, SURVEYORS & ENVIRONMENTAL CONSULTANTS
43 West High Street, Somerville, New Jersey 08876
Phone (908) 725-0230 Fax (908) 707-0831

DESIGNED BY: _____

DRAWN BY: RNM

CHECKED BY: RNM

SHEET NUMBER: 1 OF 1

CRAIG W. STIRES
PROFESSIONAL ENGINEER N.J. LICENSE No. 39078

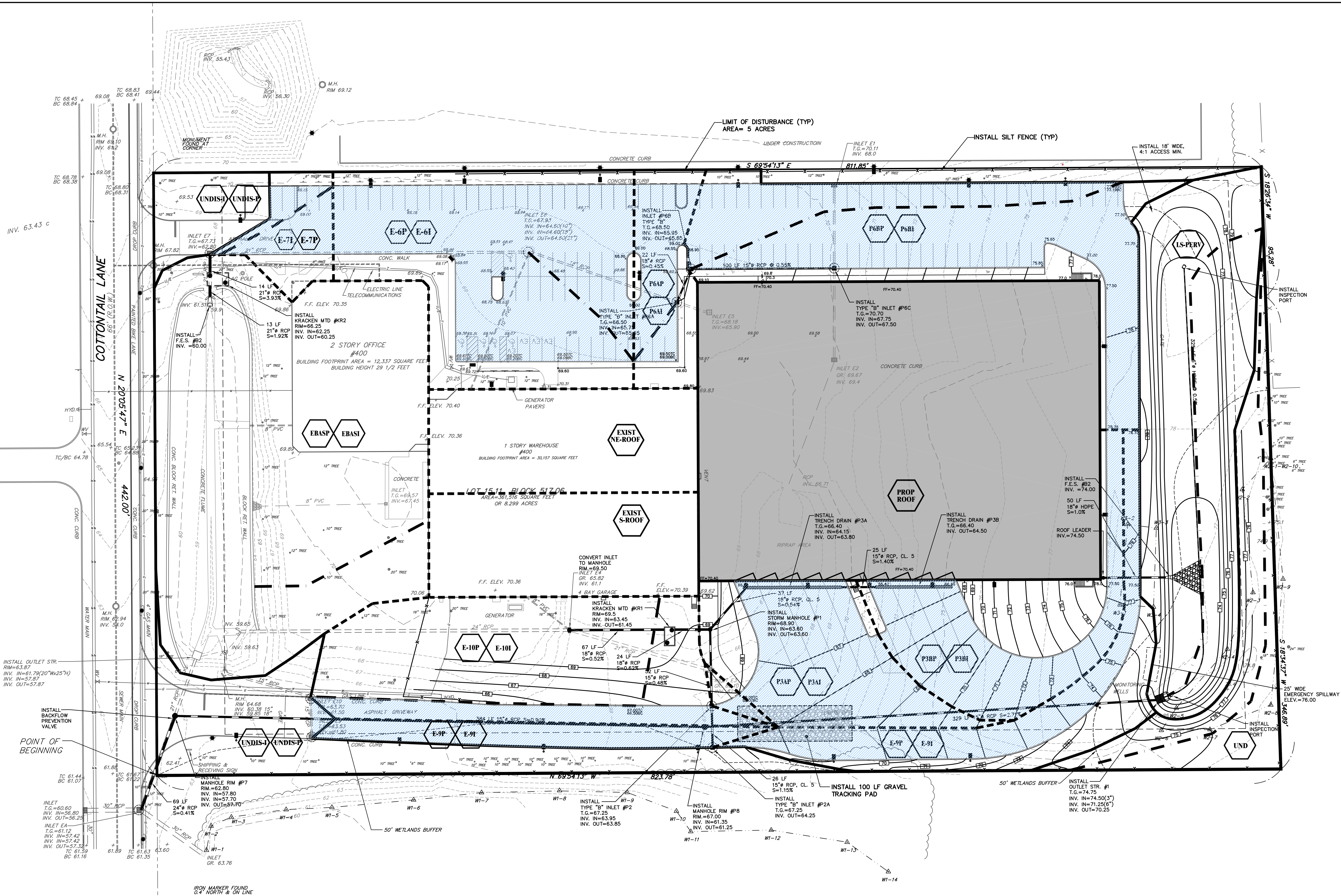
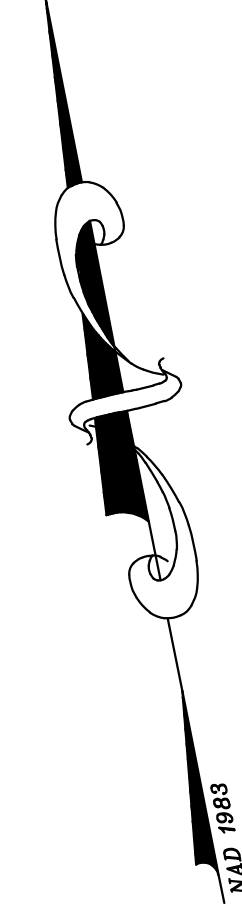
DATE: 03/03/23

SCALE: 1" = 30'

PROJECT No. 23034

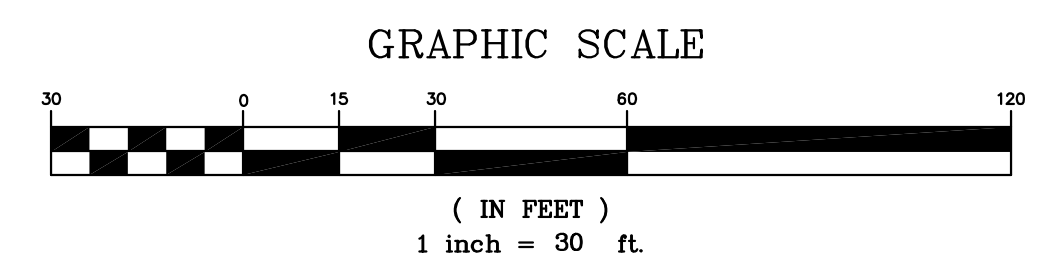
CAUTION: If this document does not contain the raised signature and seal of the professional, it is not an authorized original document and may have been altered.

DATE	REVISION	BY
09/19/24	REVISED PER TOWNSHIP & DRCC REVIEW	CWS



EXISTING BASIN:
 PROPOSED REGULATED MOTOR VEHICLE SURFACE:
 91,663 SF
 PROPOSED IMPERVIOUS SURFACE:
 142,521 SF
 TOTAL PROPOSED IMPERVIOUS SURFACE:
 212,383 SF

- SYMBOL LEGEND**
- GAS VALVE
 - WATER VALVE
 - SANITARY SEWER CLEANOUT
 - UTILITY MANHOLE
 - LIGHT POLE
 - FOOT LIGHT
 - HANDICAP SPACE
 - HYDRANT
 - SIGN (ROAD)
 - SIGN (PRIVATE)
 - UTILITY POLE
 - GUY ANCHOR
 - INLET
 - FENCE
 - ELECTRIC/TELEPHONE CABLES
 - GAS MAIN
 - WATER MAIN
 - STORM SEWER PIPE
 - SANITARY SEWER PIPE
 - N NORTH
 - S SOUTH
 - E EAST
 - W WEST
 - ° ANGULAR DEGREES
 - ' ANGULAR MINUTES
 - " ANGULAR SECONDS
 - R RADIOS
 - L LENGTH
 - C CHORD
 - BRG CHORD BEARING
 - ⊠ TRANSFORMER



POST DEVELOPMENT DRAINAGE MAP

400 COTTONTAIL LANE
 LOT 15.11 BLOCK 517.06

FRANKLIN TOWNSHIP SOMERSET COUNTY NEW JERSEY

STIRES ASSOCIATES, P.A.
 ENGINEERS, SURVEYORS & ENVIRONMENTAL CONSULTANTS
 43 West High Street, Somerville, New Jersey 08876
 Phone (908) 725-0250 Fax (908) 707-0831

CRAIG W. STIRES
 PROFESSIONAL ENGINEER

N.J. LICENSE No. 39078

DATE: 03/03/23

SCALE: 1"=30'

PROJECT No. 23034

DESIGNED BY: RNM
 DRAWN BY: RNM
 CHECKED BY: CWS
 SHEET NUMBER: 1 OF 1

09/19/24 REVISED PER TOWNSHIP & DRCC REVIEW CWS
 02/29/24 REVISED PER TOWNSHIP & DRCC REVIEW CWS
 DATE REVISION BY